

DURRANTS

SINCE 1853

RESIDENTIAL
AGRICULTURAL
COMMERCIAL
ON SITE AUCTIONS
PROPERTY MANAGEMENT
BUILDING CONSULTANCY
AUCTION ROOMS
HOLIDAY COTTAGES



Friday 6th October 2017

Antiques and Fine Art commencing 10.00am
Furniture plus Courtyard commencing at 1.00pm



ANTIQUES AND FINE ART WITH JEWELLERY,
SILVER AND FURNITURE

Tel: 01502 713490
WWW.DURRANTS.COM

RICS ACCREDITED VALUERS AND AUCTIONEERS

Catalogues
£3.00

NOTES FOR PROSPECTIVE PURCHASERS

DURRANTS AUCTIONEERS AND VALUERS

Durrants' experience of Auction Sales dates back to 1853 and since that time we have continued to undertake chattel sales and valuations throughout Norfolk and Suffolk.

From our Auction Rooms at Peddars Lane, Beccles we conduct Fine Art and Antique Auction Sales every month, interspersed with Specialist Sales.

Our team of Valuers and Auctioneers undertake valuations for probate and insurance purposes and provide advice for sale and family division.

RICS accredited Valuers and Auctioneers

OUR SERVICE

With our own salerooms, experienced staff and removal vehicles we are able to offer a comprehensive and cost effective service to executors, solicitors and private clients.

- On site inspections at short notice by appointment
- Experienced valuers throughout the group
- Verbal advice or comprehensive reports
- Professional and confidential service
- Specialist valuations of furniture, ceramics, pictures, silver, jewellery, clocks and watches, books, toys and dolls, stamps, postcards, coins, Militaria, swords, medals Sporting Guns and Antique Firearms

Durrants has offices in Beccles, Halesworth, Southwold, Harleston and Diss. Each has a team of experienced Chartered Surveyors and Estate Agents, offering a wide range of services encompassing Agricultural, Residential, Commercial and Investment properties. We also have a specialist Planning and Design Group.

FIREARMS

We have full R.F.D. capabilities enabling us to sell on your behalf all items that require licences. Our registered Firearms Dealership Number is Suffolk 252. We are always happy to help with any firearm queries, legal requirements or valuations.

VIEWING

The Viewing days for the Friday 6th October Antiques and Fine Art with Jewellery, Silver and Furniture featuring a Private Collection of Barometers are:-

Tuesday 3rd October between **9am and 5pm**

Wednesday 4th October between **9am and 5pm**

Thursday 5th October between **9am and 7.30pm**

The morning of the sale from 8am

SALE DAY TIMETABLE

The antiques sale starts at 10.00am in the upstairs saleroom at Lot 1.

There will be no lunch break during the course of the day.

Clearing is allowed during the sale in the upstairs saleroom.

The furniture sale starts at 1pm at Lot 1001 in the ground floor saleroom.

SUMMARY OF CATALOGUE

China, Glass, Clocks, Pictures, Wood, Metal, Pottery and Porcelain,

Objects Vertue, Silver, Jewellery and Watches

Furniture and Courtyard

Missing Lot numbers – 1106

Lots 1 – 500

Lots 1001 - 1195

For further images please visit www.durrants.com or www.the-saleroom.com/durrants

FORTHCOMING EVENTS

**FREE VALUATIONS AND TAKING IN OF GOODS MONDAY TO FRIDAY
BETWEEN 9AM - 5PM (EXCEPT SALE DAY) AND ALSO EVERY
SATURDAY MORNING BETWEEN 9AM - 12 NOON**

AUCTION CALENDAR 2017

Friday 6th October

Antiques and Fine Art with Jewellery and Silver

Friday 27th October

Antiques and Fine Art with Jewellery and Silver

Friday 17th November

Antiques and Fine Art with Jewellery and Silver

Thursday 30th November and Friday 1st December

A two day sale of Toys, Collectables, Militaria, Medals, Air Guns, Sporting Guns and Firearms etc

Friday 15th December

Antiques and Fine Art with Jewellery and Silver

These dates may be subject to change – please contact us during the year to ensure you don't miss out!

VIEWING

Antique and Fine Art Sales are on view the week of the sale - Tuesday and Wednesday 9am-5pm and Thursday 9am-7.30pm, or by appointment.

Toy, Collectable and Militaria Sales are on view the week of the sale - Tuesday 9am-5pm, Wednesday 9am-7.30pm and Thursday 8am-10am and 3pm-7.30pm (no viewing when the auction is in progress on the Thursday), or by appointment.

NO VIEWING WHILST ANY SALE IS IN PROGRESS

All Auction catalogues, photographs, particulars and results are available online at www.durrants.com
We are also happy to carry out additional and one off sales on site or at our Sale Rooms by arrangement.
House clearances by arrangement.

For further information please call:

Mark Whistler ANAVA Auction Rooms Manager,
Specialist Militaria, Firearms and Furniture Valuer
01502 713490 or mark.whistler@durrants.com

Beverley Baker Assistant Manager and
Head of Administration
01502 713490 or auctionrooms@durrants.com

Robert Pearce Valuer for Stamps, Postcards,
Collectables, Ceramics, Books and Watches
01502 713490 or auctionrooms@durrants.com

James Felgate MNAVA Valuer and Photographer
01502 713490 or auctionrooms@durrants.com

Anna Paulding ANAVA Auction Administrator /
House Clearance Coordinator
01502 713490 or auctionrooms@durrants.com

Karen Goring Auction Administrator
01502 713490 or auctionrooms@durrants.com

ONLINE BIDDING

We have teamed up with the-saleroom.com to allow you to bid at our auctions.
Simply register on www.the-saleroom.com/durrants under Live Auctions.

Bid online at our auctions through
the-saleroom.com

**CHINA, GLASS, CLOCKS, PICTURES,
WOOD, METAL, POTTERY, PORCELAIN,
OBJECTS VERTUE, SILVER, JEWELLERY
AND WATCHES**

Lots 1 – 500

- 1 A Canadian decoy duck with black and yellow mottled decoration to incised body, length 16" (neck repair) £70-100*



- 2 A Capo Di Monte limited edition cock pheasant, length 16" (leaf chips) £20-40*
- 3 A pair of spelter knights, brass desk stand, hardstone tree plus a horn £30-50*
- 4 Various china etc including boxed Wedgwood, Murano glass clown, Beswick matt glazed Labrador etc £20-40*
- 5 A decorative lady clock, Franklin Mint vintage car plus various china £20-40*
- 6 An Arts and Crafts double socket brass wall sconce, the back plate embossed with crinoline lady, 12" high £35-55*
- 7 Two oak cased mantel clocks, one Ansonia £40-60*
- 8 Two pairs of Bohemian blue overlaid glass vases £20-40*
- 9 A brass crucifix on red variegated marble cross £30-50*
- 10 Various duck and other animal ornaments £20-30*
- 11 A Satsuma Geisha decorated vase £20-30*
- 12 A giltwood Rococo easel mirror plus other items £30-40*
- 13 A white glazed shell decorated sack vase £30-50*
- 14 A pair of 19th Century silver plated on copper candlesticks, two bowls etc £30-50*
- 15 An enamel bread bin containing brassware etc £20-40*
- 16 A 19th Century triple ring decanter, silver rim vases plus other glass £30-50*
- 17 A 19th Century Paris porcelain floral vase plus a Wedgwood Jasperware teapot £30-40*
- 18 A tray of various glass paperweights £20-40*

- 19 A pair of 19th Century oval coloured prints of outdoor social scenes, 8" x 9" £20-30*
- 20 A mahogany table top domed glass display case £75-100*
- 21 A taxidermy stoat within glazed display case £30-50*



- 22 A bronzed figure of a pensive lady leaning on a variegated marble column, height 14" £80-120*
- 23 A Victorian floral jardiniere, a toilet jug plus a cased dressing set £30-40*
- 24 A brass log bin £30-40*
- 25 A giltwood sunburst wall clock £45-55*
- 26 A collection of brass including glass bowl with stand and drawer handles £20-40*
- 27 Various Carnival and other glass (two boxes) £20-30*
- 28 Four slip cases containing 'The Masters' prints plus one other volume £20-30*
- 29 Various paintings and prints £20-40*
- 30 Three 19th Century watercolours of Hastings, four bird prints plus three watercolours in frames £20-40*
- 31 Various T&G Green Cornish ware storage jars, vinegar etc £30-40*
- 32 A brass folding fire guard £20-30*
- 33 Two boxes of various paintings and prints £30-50*
- 34 An unsigned oil on canvas of a river running through a forest, 23" x 36" £30-50*
- 35 A set of three John Leech limited edition hunting prints, 13" x 18" £30-40*
- 36 A signed Richard Robjert print 'Woodcock with Chick' with watercolour vignette, 11" x 13" £20-30*
- 37 A Simon Trinder watercolour 'Hare Running' signed lower right, 10" x 20" £40-60*



***THIS LOT IS SUBJECT TO 17% COMMISSION PLUS VAT. PLEASE READ OUR TERMS AND CONDITIONS.**

- 38 A Simon Trinder watercolour 'Teal in Flight', signed bottom right, 10" x 14" £150-180*



- 39 A signed Richard Robjent print 'English Partridges', 13" x 18" £20-30*
- 40 A Simon Trinder watercolour 'Kestrel', signed lower right, 14" x 10" £80-100*



- 41 An unsigned Simon Trinder watercolour 'Teal', 12" x 15" £40-60*
- 42 A Simon Trinder watercolour 'English Partridges in Flight', signed lower left, 13" x 17" £100-120*
- 43 A set of four coloured hunting prints, After Cecil Aldin, 8" x 12" £30-40*
- 44 A pair of Archibald Thorburn prints 'Black Game' £50-70*
- 45 Three 19th Century coloured prints of birds, 5" x 7" £20-30*
- 46 A pair of James Greig (1861-1941) gouache and watercolour, titled 'A Street Scene of Old Tangier' and 'A Street Scene in Cairo', one is signed lower right, 14" x 10" £200-250*



- 47 Max Dangerfield (1932-2015) seven various unframed oils on canvas plus an oil on board of a boy £30-40*
- 48 G.Talbot, 1908 pair of oils on canvas of river scenes plus an oil on canvas of a moonlit punt scene, inscribed rear Copy-Salford Art Gallery, Ben.H.Miller £20-40*
- 49 A watercolour of a country house, initials J.M.W. plus a signed watercolour of African elephants £30-40*

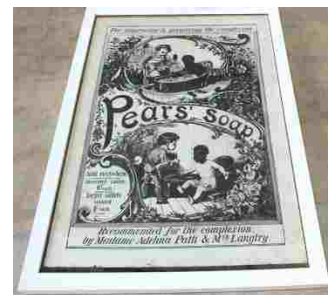
- 50 Florence Cramer watercolour of a seated lady, 16" x 8" £40-60*
- 51 Oil on canvas Old Salt, 14" x 9" £30-50*
- 52 C.H.Harrison watercolour of Oulton Broad with sailboats, 6" x 12" £30-50*
- 53 George Vempey Burwood (1844-1917) watercolour of a broadland coastal scene signed and dated 1885 6" x 9" £60-80*
- 54 George Vempey Burwood (1844-1917) watercolour of a broadland scene signed and dates 1897 4" x 11" £60-80*
- 55 C.G.Morre oil on canvas under glass of Gorleston Pier signed and dated 1886 lower right 11" x 17" £50-90*
- 56 A pair of signed watercolours of ginger cats, 14" x 10" £20-40*
- 57 Four prints of gun and working dogs £20-40*
- 58 L.S.Lowry limited edition of 750 unsigned street scenes, Adam Collection Ltd, 12" x 9" £60-80*
- 59 A map of Norfolk plus three other pictures £20-30*
- 60 J.A.Gowing eight initialled watercolours of the Pictorial Views of Old Lowestoft based on prints by Henry Trery of 1852, with dedication to Samuel Peto, including Entrance to the Pier, The Esplanade 1852, Lowestoft from Pakefield 1852, The Royal Hotel 1852, The Fish Market 1853, The Royal Hotel 1852, The Entrane to the Harbour and Title Page £500-600*



- 61 Richard Robjent watercolour signed bottom right, 'Pair of Shovelers, 8" x 10" £100-120*



- 62 T.K.Gay watercolour 'Postbridge River Dart', signed lower right, 6" x 11" £20-40*
- 63 A pair of 19th Century coloured prints 'Bachelors Hall', 12" x 16" £30-40*
- 64 Two Archibald Thorburn prints 'Pheasants' and 'Grouse' £60-80*
- 65 Richard Robjent signed print 'Pheasants', 14" x 19" £20-40*
- 66 A Richard Robjent print 'Grouse with Eagle' with watercolour vignette, 16" x 19" £40-60*
- 67 A Simon Trinder watercolour of stags in landscape, signed lower right and snipe shooting print £30-50*
- 68 A Richard Robjent print 'Pheasants' with watercolour vignette, 16" x 19" £40-60*
- 69 Graham Carver limited edition print of a village street scene, signed, 13" x 24" £20-30*
- 70 A Richard Robjent print 'Grouse with Eagle' with watercolour vignette, 16" x 19" £40-60*
- 71 A Simon Trinder watercolour 'Shoveler', signed lower right, 10" x 14" £40-60*
- 72 Simon Trinder watercolour 'Teal Rising', signed lower right, 14" x 21" £50-80*
- 73 Ernest Charles Walbourn (1872-1927) a large oil on canvas of Highland cattle drinking from a river surrounded by mountains, signed lower right 40" x 60" £600-800*
- 82 Perry Broad, watercolour of steam drifter LT982, two Hassell golfing prints plus other pictures £30-50*
- 83 Graham Howlett print of a broadland scene with boats plus one other £20-30*
- 84 An oval gilt wall mirror plus one other £20-30*
- 85 A Georgian style mahogany and parcel gilt wall mirror with carved surround and shell mount £45-60*
- 86 A pair of coloured prints of parrots £20-40*
- 87 A Richard Robjent coloured print 'Grouse' with watercolour vignette, 15" x 18" £40-60*
- 88 A pair of Archibald Thorburn prints 'Grouse' and 'Ptarmigan', 11" x 14" £30-50*
- 89 A pair of Archibald Thorburn prints 'Pheasants' and 'English Partridges' £50-70*
- 90 A Richard Robjent coloured print 'Oyster Catcher' with watercolour vignette, 15" x 19" £35-45*
- 91 An oil painted head board of a naked lady and mountains, signed E.Morby £20-30*
- 92 A Pears Soap monochrome poster, Recommended for the Complexion by Madame Adilia Patti and Mrs Langtry, 19" x 14" £30-50*



- 74 A coloured print of a lady with a dove, 20" x 16" £20-30*
- 75 Two gilt framed wall mirrors £30-50*
- 76 Seven various topographical coloured photos £20-30*
- 77 A Japanese woodblock print of Sumo wrestlers, 11" x 9" £40-60*
- 78 An oil on canvas of a man with a parrot, 18" x 22" £50-70*
- 79 A Rosenthal bird and floral part dinner and tea set plus Mabel Lucy Attwell and other prints £20-40*
- 80 A lacquer tray plus various 19th Century and other topographical engravings and prints £20-30*
- 81 Various watercolours and prints £30-50*
- 93 A Georgian style shaped wall mirror £40-60*
- 94 An inlaid overmantel mirror, owl woolwork fire screen plus two Victorian maple framed prints of children £20-40*
- 95 Various paintings and pictures including a watercolour of skunks £30-40*
- 96 An aneroid barometer in heavily carved oak case (cracked glass) £45-60*
- 97 An aneroid barometer in carved oak case, signed B.Mallinson & Co, Huddersfield £60-80*
- 98 An aneroid barometer in carved oak case £45-60*
- 99 An aneroid barometer in carved oak case, signed Benetfink & Co £50-70*

***THIS LOT IS SUBJECT TO 17% COMMISSION PLUS VAT. PLEASE READ OUR TERMS AND CONDITIONS.**

- 100 An aneroid barometer in carved oak case £45-60*
- 101 An aneroid barometer in Art Deco carved oak case £35-45*
- 102 An aneroid barometer in shell inlaid mahogany case, signed A.Intross, Rochester Bridge £45-60*
- 103 An aneroid barometer in carved oak case (name rubbed) £30-40*
- 104 An aneroid barometer in floral and shell carved oak case, signed Aitchison & Co, Optician to HM Gov, London and provinces £50-70*
- 105 An aneroid barometer in carved oak case £20-40*
- 106 An aneroid barometer with clock in leaf carved oak case (cracked glass) £45-60*
- 107 An aneroid barometer in gilt case £20-30*
- 108 An aneroid barometer in heavily leaf carved oak case, signed Aitchison, London and provinces £50-70*
- 109 A 19th Century Negretti & Zambra aneroid barometer in carved oak architectural case, No.15052 £100-150*
- 110 A 19th Century mercury banjo barometer in mahogany case, signed A.Solcha, Kettering £75-100*



Lots 108, 109 and 110

- 111 A circular oak brass dial barometer, signed Deacon & Sons, Luton £20-40*
- 112 Two green Art Glass figural table lamps, one with amber shade £150-180*



- 113 A Chinese blue and white porcelain cylindrical brush pot hand painted with dignitaries and attendants £30-50*
- 114 A white glazed pottery cat £20-40*
- 115 A pair of Victorian floral pottery ewers £30-40*

- 116 A brass and copper three branch electrolier with mask and floral decoration £20-40*
- 117 A Zenit-E camera in case, a Paragon 1:45 F-200mm lens plus a pewter tankard etc £20-40*
- 118 A Goebels figural lamp, metal Indian figure plus other items £30-40*
- 119 A composition head dressed doll £30-40*
- 120 A Smiths oak mantel clock plus a Victorian inlaid workbox £20-40*
- 121 A black slate and marble mantel clock £20-40*
- 122 A lacquer tray, two ink stands plus cutlery £30-40*
- 123 An Edwardian oak stationery cabinet plus a desk calendar £40-60*
- 124 A large pink waisted glass vase plus two others £30-50*
- 125 A Royal Albert Old Country Roses part tea and dinner set (three trays) £100-150*
- 126 A pair of Victorian circular inlaid mahogany footstools £30-40*
- 127 A blue glass flared neck vase, height 15" £20-30*
- 128 A black slate mantel clock with four marble columns £20-40*
- 129 A 19th Century pottery Aladdins lamp plus other china £20-40*
- 130 Lyons Tea enamel sign, 9 1/2" x 19" (some losses) £40-60*



- 131 Various 19th Century and other china (some as found) £30-40*
- 132 A red ground enamel Nut Brown Tobacco thermometer, 22" x 7" £150-200*



- 133 Three African carved wooden figures £30-40*
- 134 An enamel blue and white Beach's Jams sign (as found), a shooting stick plus various LP's £30-50*

***THIS LOT IS SUBJECT TO 17% COMMISSION PLUS VAT. PLEASE READ OUR TERMS AND CONDITIONS.**

- | | | | | | |
|-----|--|----------|-----|---|---------|
| 135 | A Wedgwood rose decorated plate and bowl set plus two Royalty mugs | £20-40* | 156 | Two bags containing designer handbags, purses etc | £40-60* |
| 136 | A box of various china etc | £20-30* | 157 | A cut glass decanter, vases and glasses | £20-40* |
| 137 | Three oriental carved bamboo brush pots, lacquer vase and plate plus a cloth fan design | £40-60* | 158 | 19th Century plus other plates including Derby, Copeland, Wedgwood etc (some as found) (two boxes) | £30-50* |
| 138 | A Springfield rose decorated part dinner set, approx forty one pieces | £20-40* | 159 | Poole and other china plus four prints | £20-40* |
| 139 | A Victorian part blue and white tea set plus other china and glass, a Satsuma vase (as found), 19th Century German plates, a still life oil on canvas, prints Feeding the Rabbits, brass mirrored fire screen plus a swing toilet mirror | £20-40* | 160 | Various sea fishing rods | £20-30* |
| 140 | A brass fender plus a set of three brass fire irons | £20-40* | 161 | A Persian rug with central medallions, 75" x 47" | £30-40* |
| 141 | A very large quantity of 'as new' jewellery display stands, jewellery boxes, bags and wooden jewellery box, together with two plastic small draw sets | £35-45* | 162 | A Persian style floral and hare decorated runner, 72" x 35" | £20-40* |
| 142 | Two boxes of blue and white twelve piece F and Sons Douglas Burslem dinnerware | £30-50* | 163 | An Afghan rug, 79" x 41" | £30-50* |
| 143 | Boxed Japanese and Chinese dolls tea sets | £20-40* | 164 | A Persian red ground runner with three central medallions, 118" x 33" | £50-70* |
| 144 | A Bunnykins oval bowl, plate plus Maling, Copenhagen and other china | £30-40* | 165 | A Persian floral runner, 100" x 30" | £50-70* |
| 145 | A Portmeirion Susan Williams Ellis coffee set plus a Royal Worcester floral cake plate | £20-40* | 166 | A Georgian cream silk waistcoat with silver thread and other floral embroidery | £60-90* |
| 146 | An early 20th Century postcard album containing military related examples, together with amongst others a good quantity of Royalty examples, British and European | £40-60* | 167 | Various volumes on nautical subjects including 1940's yachting magazines, natural history and travel etc (three boxes) | £30-50* |
| 147 | A cased Besson trumpet and accessories plus a small accordion | £30-50* | 168 | Various china and glass including Staffordshire style dogs (two boxes) | £20-40* |
| 148 | WITHDRAWN | | 169 | A Chinese figural table lamp plus other oriental ceramics | £30-50* |
| 149 | A print depicting the 1937 Monaco Grand Prix race, 20" x 26" | £20-30* | 170 | WITHDRAWN | |
| 150 | Various Japanese china and sundries | £20-30* | 171 | A pair of cut glass decanters plus various 19th Century china | £20-40* |
| 151 | Various English and continental china, Satsuma, Imari and other Japanese ceramics plus a metal landscape vase | £30-40* | 172 | 19th Century plus other plates and dishes including Prattware, blue and white, Staffordshire dog and a 19th Century Delft vase (as found) | £20-40* |
| 152 | A Crown Royal floral tea set plus other china and glass (two boxes) | £20-40* | 173 | A Spode Geranium teapot plus other china (two boxes) | £20-40* |
| 153 | Various painted Bargee style metalware | £20-30* | 174 | Two Victorian Willow pattern meat plates, large piggy bank, Capo Di Monte figure plus other china (two boxes) | £20-40* |
| 154 | A mahogany table canteen of Sheffield silver plated cutlery | £70-100* | 175 | A Japanese eggshell tea set | £20-30* |
| 155 | An Italian inlaid musical sewing table | £20-40* | 176 | A box of engravings plus a box of prints, oils etc | £30-50* |
| | | | 177 | A metal bound trunk containing 19th Century decanters plus a box of china | £20-40* |
| | | | 178 | A Villeroy & Boch tyg, other china including Minton bowls and Royal Doulton stoneware | £30-40* |
| | | | 179 | A Cookham croquet set | £30-50* |

***THIS LOT IS SUBJECT TO 17% COMMISSION PLUS VAT. PLEASE READ OUR TERMS AND CONDITIONS.**

- | | | | | | |
|-------|--|----------|-------|---|-----------|
| 180 | Various volumes on ballet and art (two boxes) | £20-30* | 201 | A box of pictures and prints including Leon Bridges and Joe Crowfoot signed print | £20-40* |
| 181 | A canteen of various cutlery | £20-30* | 201AA | box of mixed GB silver coinage plus 1791 Hull half penny plus other 1700-early 1800 coins | £60-80* |
| 182 | Doulton and other foot warmers, Chinese blue and white vase, a jardiniere (as found) plus other china (two boxes) | £20-40* | 201BA | WWI Victory medal to 3-10095 Pte.B.Gilbert Suffolk.R., plus a silver Halesworth U.P.C. Fire Brigade medal to the same man | £40-60* |
| 183 | A Noritake part trinket set plus a next of lacquer boxes | £20-40* | 201CA | pair of 9ct gold flower earrings, cased lady's 9ct gold watch (as found) etc | £30-50* |
| 184 | A microscope plus insect slides and accessories | £30-50* | 201DA | tin of costume jewellery and watches | £30-50* |
| 185 | Metal sundries to include lamps, lanterns, 19th Century copper coffee pot etc (box and deed box) | £30-40* | 201E | A 22ct gold wedding band, size L | £100-150* |
| 186 | A milk glass oil lamp (converted), a copper kettle plus medal sundries etc | £20-40* | 201F | An 18ct gold small diamond set ring, size O | £50-70* |
| 187 | A copper ships trawler masthead lantern | £40-60* | 201GA | 9ct gold opal and garnet set ring (one opal chipped) plus a yellow metal signet ring | £50-70* |
| 188 | Medal and wooden sundries including African carvings | £20-30* | 201H | Three gold rings including an 18ct gold three diamond set ring | £40-60* |
| 189 | A green and gold flecked Art Glass vase plus a pair of mottled glass vases | £30-40* | 201J | Silver items including bangle, spoon, brooch etc plus a yellow metal bracelet | £40-60* |
| 190 | A Masons Regency part dinner and tea set (two boxes) | £40-60* | 202 | Four boxes of boxed collectors wall plates, approx forty | £30-50* |
| 191 | A Lingard crinoline lady teapot, jelly moulds plus other china | £20-40* | 203 | Five boxes of boxed collectors wall plates, approx fifty one | £40-60* |
| 192 | A pottery fish set, Blue Mountain animals etc | £20-30* | 204 | A Poole red and black vase plus Denby china etc | £20-30* |
| 193 | A silver mounted walking cane | £20-40* | 205 | Judy Boyes watercolour of Martindale Farm Ullswater plus a religious print | £20-40* |
| 194 | A Victorian copper kettle plus other copper ware including a warming pan | £30-50* | 206 | A pair of pottery pug dogs (one as found) | £20-40* |
| 195 | Coloured and other glassware including lemonade set, Murano etc | £20-40* | 207 | Various prints and watercolours including a Cuban dolphin print | £20-30* |
| 196 | A box of railway lamps etc | £20-30* | 208 | A 19th Century Dutch Delft charger | £40-60* |
| 197 | Two boxes of various Studio Pottery | £20-40* | | | |
| 198 | Various cutlery, brassware etc | £20-30* | | | |
| 199 | Two Victorian Asiatic pheasant meat plates plus cups, saucers and other items | £20-40* | | | |
| 200 | A Flemish sepia watercolour of a tree and wall scene with cherub statue plus two other pictures | £20-40* | | | |
| 200AA | chrome Walthams black dial pocket watch, Smiths Railway stopwatch BRE88 on reverse and a L.M.S. 14604 pocket watch | £60-100* | | | |
| 200BA | silver pocket watch with white enamel dial, movement marked Adam Buhdess of Coventry, Reverse R.A. ↑ 61302.P | £40-60* | | | |



- 209 WITHDRAWN
 209AA gents Omega manual wind wristwatch
 £80-120*

***THIS LOT IS SUBJECT TO 17% COMMISSION PLUS VAT. PLEASE READ OUR TERMS AND CONDITIONS.**

- 210 A quantity of bead necklaces including fresh water cultured pearl, quartz etc
£20-30*
- 211 A lacquer box containing white metal costume jewellery
£30-50*
- 211AA quantity of silver and white metal jewellery including rings, earrings, pendants etc
£40-60*
- 211BA 9ct gold pendant with copy of sovereign to centre, a yellow metal chain and brooch
£30-50*
- 212 Various rolled gold and gold plated jewellery
£20-40*
- 213 A 9ct gold diamond crossover eternity ring, size M
£50-70*
- 214 A group of six silver stone set rings including quartz, agate and mother of pearl
£30-40*
- 215 Seven various silver necklaces, some stone set including zircon, pearl, garnet etc
£20-30*
- 216 Eleven various silver chains, different styles and lengths including two gold plated
£30-40*
- 217 Six various stone set silver pendants including large onyx and topaz, pink topaz, peridot etc
£20-30*
- 218 Seven various silver bracelets and bangles, one set with pearls, three gold plated
£20-30*
- 219 Ten various silver necklaces, some in Teddy bear form other stone set including onyx, pearl etc together with an unmounted goshenite stone, 1.74cts with certificate
£30-40*
- 220 Seven pairs of drop silver earrings some set with stones including pearl, amethyst, topaz and aquamarine etc
£30-40*
- 221 Eight pairs of silver earrings set with various stones including amber, topaz, garnet etc
£30-40*
- 222 A gents stainless Omega Dynamic wristwatch
£150-200*



- 222AA silver cigarette box with inscription to top, Birmingham plus a tortoiseshell card case
£60-80*

- 222BA boys Rolex Tudor Oyster wristwatch
£250-350*



- 223 A gents gold plated Omega Auto wristwatch
£100-150*
- 224 A gents Zenith Auto Calendar wristwatch
£70-100*
- 225 Various watches and pocket watches including silver
£40-60*
- 226 A large quantity of watches
£40-60*
- 227 A large quantity of watches
£40-60*
- 228 Various watches and costume jewellery including a silver pocket watch and chain
£30-50*
- 229 A large 19th century shagreen and white metal etui
£120-180*



- 230 A collection of six 'Sheffield made' pocket knives
£20-30*
- 230AA gentlemen's Titanium Tudor Pelagos blue chronometer on bracelet rated for dive depth of 500m, Model No. 25600 TB S/No. I510810 with box and paperwork including International Guarantee Card, receipt of purchase dated 4.3.17, also comes with the additional rubber straps and extra link
£1000-1500*



- 231 A 19th Century bone handled tooth extractor
£60-80*
- 232 Two silver pocket watches plus a case
£20-30*
- 233 A carved Chinese apple green jade bangle
£45-55*

***THIS LOT IS SUBJECT TO 17% COMMISSION PLUS VAT. PLEASE READ OUR TERMS AND CONDITIONS.**

234 A 19th Century fruitwood corkscrew
£35-45*

235 WITHDRAWN

236 A Victorian circular copper jelly mould of
two tier turret form by Benham & Froud
No.489, 4 1/2" dia £100-120*



237 A box of 19th Century and other silver
plus other medallions £20-30*

238 Two silver cigarette cases, one with
tortoiseshell interior, a vesta, match
holder plus a card case £70-100*

239 A silver Andrew Barrett & Son of 63 and
64 Piccadilly London card holder with
monogram to front, Birmingham 1911
£50-70*



240 Two silver top jars etc £20-40*

241 Small items to include gauges, cased
pocket thermometer, micrometer etc
£30-50*

242 A set of six silver coffee spoons plus a
cased spoon and fork £20-40*

243 Various watches, movements and
sundries £20-40*

244 A large quantity of bead necklaces
including glass beads, various ages, in
box £30-50*

245 Four silver and white metal necklaces
including dolphin pendants, together with
silver earrings, silver enamelled brooch
etc £40-60*

245AA Junghans Chronograph Olympic 17
Jewels gents wristwatch £250-350*



245BA gents vintage Rolex with faded dial on
brown leather strap £250-350*

246 A modernist style silver necklace set with
black stones £30-50*

247 Two pairs of 18ct gold earrings, one in
the form of bows £50-70*

248 Two pairs of 9ct gold earrings, one set
with amethyst and various yellow metal
earrings, one in the form of a hand
holding a pearl £30-50*

249 A selection of earrings including yellow
metal stone set etc £30-50*

250 A brass heart shaped snuff box engraved
with steam boat and titled 'The Eclipse'
£30-50*



251 A French enamelled brooch by Catherine
Popesco, floral decoration with red, green
and yellow enamel work £30-40*



252 A 2006 gold sovereign £180-220*

253 A 1965 gold sovereign £180-220*

254 A 1893 gold sovereign £180-220*

255 A 1907 gold sovereign £180-220*

256 A 2005 gold sovereign £180-220*

257 A 2002 gold sovereign £180-220*

258 A 1912 gold sovereign with case
£180-220*

259 Mabel Lucy Attwell postcards, Churchill
book matches plus small sundries
£20-30*

260 An 1889 crown, Ronson table lighter, 9ct
gold garnet ring plus two silver rings etc
£40-60*

261 An 18ct gold ring set with white stones
£40-60*

262 A boxed silver pusher and spoon,
Birmingham £20-40*

263 A quantity of costume jewellery including
necklaces, bracelets, brooches, earrings
etc £30-50*

264 A continental silver pocket watch with a
small quantity of silver jewellery including
brooches, bracelet and earrings £40-60*

***THIS LOT IS SUBJECT TO 17% COMMISSION PLUS VAT. PLEASE READ OUR TERMS AND CONDITIONS.**

- 265 An 18ct gold fob watch with foliate engraved case £150-180*



- 266 Two 9ct gold lady's wristwatches on straps (one as found) £40-60*

- 267 An Art Nouveau style pendant of hexagonal design set with garnet and seed pearls on a 9ct gold chain £40-60*

- 268 Two 9ct gold chains (one as found), a 9ct gold cross pendant, a 9ct gold St Christopher pendant, a small 9ct gold flower shaped pendant set with a small blue stone and a yellow metal heart shaped locket £40-60*

- 269 A small 9ct gold curb link bracelet with two 9ct gold padlock heart shaped clasps (one as found) £80-120*

- 270 Three pairs of 9ct gold and yellow metal hoop earrings (some as found) £30-50*

- 271 A mixed lot of 9ct gold and yellow metal earrings, various designs, some are odd (as found) £30-50*

- 271A A gold plate and steel back gents Chalet Incabloc wristwatch plus a plated and stainless steel back Emperor De Luxe Automatic gents wristwatch £80-120*

- 272 A mixed lot of 9ct gold and yellow metal stone set earrings, various styles (some stones as found) £60-80*

- 273 A 9ct gold wedding band together with a 9ct gold and platinum band (cut) £40-60*

- 274 A 9ct gold ring set with a single blue stone, size M £30-50*

- 275 A 9ct gold half eternity ring set with pink and white stones, size M 1/2 £30-50*

- 276 A 9ct gold gents signet ring with star cut design to centre panel (worn), size W £50-70*

- 277 A 9ct gold ring set with two rows of pink and white stones, size N 1/2 £30-50*

- 278 Two 18ct gold illusion set diamond rings £70-90*

- 279 An 18ct gold ring set with single diamond, size M 1/2 £60-80*

- 280 An 18ct gold ring set with small rubies and diamonds, size N £50-70*

- 281 An 18ct gold sapphire and diamond ring, size M £80-120*

- 282 An antique 18ct gold set ring with small diamond and rubies, size I £50-70*

- 283 A 22ct gold wedding band (misshapen), size K £70-90*

- 284 An 18ct gold opal and diamond ring, size K £200-300*



- 285 A 9ct gold pierced ring, size R £30-50*

- 286 A 14ct white gold seven stone diamond ring, size N £50-70*

- 287 A 9ct gold back and front oval locket £30-50*

- 288 A 14ct gold tanzanite and diamond ring £60-80*

- 289 A 9ct gold CZ cluster ring, size M £40-60*

- 290 A 9ct gold sapphire and CZ half eternity ring, size M £30-50*

- 291 A 9ct gold garnet set abstract ring dated 1967, size Q £100-150*



- 292 An 18ct gold full eternity ring, size L £100-150*

- 293 A small 18ct gold three stone diamond ring, size J £60-80*

- 294 A 9ct gold sapphire and diamond cluster ring, size K £30-50*

- 295 Butterscotch amber beads and bracelet, approx 67g £600-800*

- 295A A group of five silver stone set rings including moonstone, topaz, rose quartz etc £30-50*

- 296 Butterscotch amber beads, approx 34g £180-220*

- 296A A group of five silver stone set rings including citrine, spinel, garnet etc £30-50*


- 297 Two amber necklaces and two similar bracelets £50-70*

- 297A A group of five silver stone set rings including ruby, spinel and pearl etc £30-50*

- 298 A large amber necklace, approx 98g £200-300*

- 298A A group of five silver stone set rings including kunzite, amethyst, peridot etc £30-50*

***THIS LOT IS SUBJECT TO 17% COMMISSION PLUS VAT. PLEASE READ OUR TERMS AND CONDITIONS.**

- 299 A 9ct gold onyx ring with Masonic inscription, size O (repair to shank) £70-90*
- 299A A group of five silver stone set rings including morganite, amethyst and pearl £30-50*
- 300 A box of silver cultured pearl studs £30-50*
- 300A Nine pairs of stone set earrings including topaz, amethyst, garnet etc £50-60*
- 300BA gents silver cased rectangular wristwatch, movement marked Arcadia £80-120*
- 300CA gents silver cased hinged 15 Jewels gents wristwatch £40-60*
- 301 A piece of amber with caddisfly inclusion £40-60*
- 301AA group of five silver stone set rings including opal, tourmaline, peridot etc £30-50*
- 302 A piece of amber with small spider inside £30-50*
- 
- 303 A piece of amber with male midge chironomidae £30-50*
- 304 A small carriage clock for restoration £30-50*
- 305 A silver cream jug (as found) and boxed Whimsies etc £20-40*
- 306 Various necklaces plus costume jewellery £20-30*
- 307 A fine pair of early 18th Century side ejector brass candlesticks on domed circular bases, 6 1/4" high £140-160*
- 308 An Arts and Crafts copper chamberstick (possibly Newlyn), embossed with scaly fish and the socket with side ejector, 10 1/4" wide £80-100*
- 309 A large Victorian circular copper jelly mould of two tier turret form stamped 257, 5 1/2" dia £100-120*
- 310 Two Victorian seamed copper jelly moulds of plain oval form, largest 6" wide £40-60*
- 311 A Timex black dial military style wristwatch £20-40*
- 312 Beswick Beatrix Potter Amiable Guinea Pig, Fierce Bad Rabbit plus a bisque wall pocket £20-40*

- 313 A silver and guilloche enamel lorgnette and coins £20-40*
- 314 Three small silver photo frames £40-50*
- 315 A 9ct gold diamond three stone ring, size N £80-120*
- 316 An 18ct gold diamond five stone ring, size M £100-120*
- 317 A 9ct gold diamond three stone ring, size M £200-250*



- 318 A 9ct gold diamond and emerald ring, size R £100-150*
- 319 A 9ct gold diamond triple row ring, size O £150-200*
- 320 A 9ct gold diamond and garnet ring, size R £50-70*
- 321 Three vintage ivory bead necklaces £40-60*
- 322 An amber 'style' butterscotch necklace £30-50*
- 323 A 9ct gold cameo pendant with bow suspension £50-70*
- 324 Fountain pens, Univer, Parker, Mabel Todd etc plus sterling and other propelling pencils etc £30-50*
- 325 A pair of silver spill vases, Birmingham 1923/1924 £70-90*
- 326 Various Victorian and other silver cutlery £100-120*
- 327 Six various Georgian silver teaspoons £30-50*
- 328 A silver sugar caster, Birmingham 1925 (with body dents and top not hallmarked) £30-50*
- 329 A silver five piece cruet set, Sheffield (non matching spoons) plus a compact £50-60*
- 330 Six various silver stone set rings with matching pendants together with a silver topaz set ring and a silver pendant and earring set £40-60*
- 331 Eight silver pendants set with various stones including blue topaz, pink topaz etc £30-50*
- 332 Six stone set silver rings including pink topaz, pearl, quartz etc £40-60*
- 333 Six silver stone set rings including topaz, amethyst, pearl etc £40-60*
- 333A Nine pairs of stud earrings, most set with pearls £40-60*

***THIS LOT IS SUBJECT TO 17% COMMISSION PLUS VAT. PLEASE READ OUR TERMS AND CONDITIONS.**

- 334 Two Victorian breakfast cups and saucers plus other china £20-30*
- 335 A 19th Century German salt glazed jug, stoneware plus other china £20-40*
- 336 Various boxed cutlery, silver plate etc £40-60*
- 337 A basket of silver plated cutlery £30-40*
- 338 A silver plated oil lamp (converted) plus three decorative wall mirrors £20-40*
- 339 A box of mixed oils, watercolours and prints, an oil on board of a Korean scene signed plus an oil of Venice signed P.Johnson 64 £20-30*
- 340 Various volumes on golf, an African oil on canvas of a mountain and river scene with figures, signed M.D.Harisi, 35" x 47", a gilt wall mirror, woolwork fire screen plus various pictures and prints £20-40*
- 341 A 19th Century coloured Morland print 'The Country Stable' £20-30*
- 342 A machine made floral carpet, 132" x 68" £40-60*
- 343 A box of various postcards £20-30*
- 344 An oak mantel clock plus Masons and other china including German porcelain pipe £30-40*
- 345 A Persian pattern carpet £20-40*
- 346 Various rock music and other albums plus childrens annuals including Rupert £20-40*
- 347 A rectangular wall mirror plus one other £20-40*
- 348 Minton Hardwick part tea set plus other china etc £30-40*
- 349 Various Copeland Spode Italian china including a clock £40-60*
- 350 A Yamaha Batter 188 drum kit with Zildjian cymbals £110-130*
- 351 An Edwardian oval inlaid mahogany wall mirror £20-40*
- 352 J.Balie oil of fishing boats at moorings, signed lower left, 23" x 11" £40-60*
- 353 A pair of river scene oils on board, 17" x 9" £20-30*
- 354 F.G.Cole pen and ink childrens drawing plus other pictures £20-40*
- 355 Stanfords London Atlas, 1892 £20-40*
- 356 A Cossor 35mm Oscilloscope camera £20-40*
- 357 A machine made Persian pattern floral carpet, 138" x 107" £40-60*
- 358 Two early circular treen bowls £40-60*
- 359 A glass dinner service £20-30*
- 360 Various prints including a Japanese bird and floral £20-40*
- 361 A basketware fishing creel £20-30*
- 362 A brass table lamp £20-40*
- 363 A green Nailsea spiral glass walking stick £20-40*
- 364 An antique petal base brass candlestick plus two 19th Century copper coffee pots £40-60*
- 365 A large 19th Century bulbous copper jardiniere with gadrooned and punched decoration, 12 3/4" dia £50-70*



- 366 A silver plated entree dish and cover by Mappin & Webb, a pair of oak barley twist candlesticks with brass sconces plus an oak letter rack £20-30*
- 367 A pair of Arts and Crafts wrought iron and pierced brass floral medallion fire dogs on arched legs, 26 1/2" high £100-150*
- 368 A brass gimbal lamp stamped Playmit AP9009 £40-60*
- 369 A brass oil lamp with white shade £50-80*
- 370 A Tongan Tapa cloth ceremonial hanging with animal and bird decoration, 58" x 106", plus one other £200-250*



- 371 Various items of china, glass and sundries £20-30*
- 372 Various Royal Worcester Palissy Game Series china £20-30*
- 373 Two boxes of china and glass including two Victorian opal glass vases £20-30*
- 374 A Royal Doulton Cavalier character jug, Dresden dish plus other items £20-40*
- 375 Various 19th Century prints plus an English school watercolour £30-40*
- 376 H.Bellange sepia watercolour of an officer and a scullery maid, 9" x 7" £30-50*
- 377 A 19th Century oval silkwork picture 'St Francis of Assisi', 16" x 13" £40-60*
- 378 Charles Longbotham watercolour of the River Thames with Albert Bridge, 7" x 11" £30-50*

***THIS LOT IS SUBJECT TO 17% COMMISSION PLUS VAT. PLEASE READ OUR TERMS AND CONDITIONS.**

- 379 Five wall mirrors plus various prints and pictures £20-40*
- 380 Various table lamps and shades, Chinese floral rug and blinds £20-40*
- 381 A pair of lake and estuary scene oils on canvas, 7" x 9" £20-40*
- 382 Paul Beck three limited edition lithographic prints 'The Home Meadow', 'Stokesy Shropshire' and 'Hay Cart', 24" x 19" £150-180*



- 383 A Japanese carp painted charger (repaired), porcelain figurines plus other china and glass £20-30*
- 384 Various 18th-20th Century prints and pictures plus a box of books £20-30*
- 385 Various oil lamps, shades and toilet wares (two boxes) £20-40*
- 386 A print of highland cattle, oak and frameless mirror plus a brown toilet bowl £20-30*
- 387 Five various prints including two reproduction railway posters £20-30*
- 388 A Wedgwood glass paperweight, cut glass baskets plus other china and glass including Royal Worcester egg coddlers (two boxes) £30-40*
- 389 A large dark blue rug with floral and ribbon decoration to borders, 104" x 72" £30-50*
- 390 A cased Ashbury eight string mandolin banjo, made in Korea with Remo Weatherking head only £40-60*
- 391 A cased Boosey & Hawkes Imperial silver plated cornet, S/No.646839 £40-60*
- 392 A cased John Grex & Sons of London eight string mandolin banjo, length 23" £40-50*
- 393 A large wrought iron floor standing candelabra £30-40*
- 394 Six Wedgwood Blue Jasper trinket boxes plus other Wedgwood and Lilliput Lane style houses etc £20-40*
- 395 Five various oleographs and prints in gilt frames £20-40*
- 396 A German oil on board of a winter countryside landscape with figures, signed bottom right indistinctly, 9 1/2" x 19" £20-40*

- 397 A collection of ceramics including Wedgwood and Royal Albert Beatrix Potter figures £20-40*
- 398 A Chapmans china part tea set painted in sky blue leaf decoration £20-40*
- 399 A Doulton Lambeth Slaters pattern vase, three dark red wine glasses plus other china £20-40*
- 400 A selection of silver plate items including salver, cocktail glasses and other items £20-40*

- 400A A tin of various GB coinage plus three pieces of Coronation ware £20-30*
- 401 A pair of 19th Century Berlin figural salts plus a French porcelain figure painted urn £30-50*
- 402 A pair of painted plaster figures of seated china men £30-40*
- 403 A pair of Chinese pottery seated figures with bowls £50-70*



- 404 A circular black japanned case Negretti & Zambra relative percentage humidity gauge £20-30*
- 405 A pair of brown glazed mastiffs on black decorative stands plus a metal dog on marble base £40-60*
- 406 A pair of 18th Century brass candlesticks, the knopped columns supported by wide stepped gadrooned square bases, 9 1/2" high £60-80*
- 407 An Art Nouveau German floral bowl £20-40*



- 408 A metal dog and cat money box £30-40*



***THIS LOT IS SUBJECT TO 17% COMMISSION PLUS VAT. PLEASE READ OUR TERMS AND CONDITIONS.**

- 409 A pair of gilt metal figures of reclining boy and girl £50-80*
- 410 Two black glazed piggy banks £30-40*



- 411 A boxed Japanese porcelain sake set plus a pair of decorative porcelain bowls £20-40*
- 412 Various cigarette and trade cards in modern album and loose £20-30*
- 413 A Poole Aegean plate with sailboat decoration £20-40*
- 414 Five Rupert Little Bear library volumes plus one other £20-40*
- 415 A Copenhagen style plaque of an angel with children, label to rear 'Die Nacht' Von Thorwaldsen, 6" x 6" £30-40*
- 416 Three stuffed tortoises plus a tortoiseshell box £30-50*
- 417 A 19th Century cross banded burr walnut twin compartment tea caddy (lacking one canister lid) £30-50*
- 418 A pair of large late 18th Century brass or bell metal candlesticks with fluted stems and beaded square bases, 10 3/4" high £30-50*
- 419 A heavy antique circular bronze sundial with engraved decoration and inscribed 'Long Live Carolvs Secvndvs', 8" dia £35-55*



- 420 An album of cigarette and trade cards £20-30*
- 421 A K.P.M. Berlin oval plaque of a seated boy with game and dogs, 7" x 9" £40-60*



- 422 A pair of porcelain landscape urns plus four pieces £20-40*
- 423 Various beadwork and other evening bags £30-40*

- 424 A set of four 19th Century brass Capstan weights by Avery, 7lb, 4lb, 2lb and 1lb £60-80*



- 425 Various fishing reels, Leeda, Shakespeare etc, flies and other tackle including System Two fly reel and spool £60-90*
- 426 Two brass and steel planes by Marples Hibernia and Sorby £30-50*
- 427 Various old radio valves plus milli amp meters £20-30*
- 428 A 19th Century Delft polychrome floral tankard (cracked) £20-40*
- 429 An early 19th Century polychrome plate plus a river landscape painted plate £20-40*
- 430 A Georgian mahogany and brass bound plate bucket £300-500*



- 431 The Merry Wives of Windsor illustrated High Thomson plus The Old Curiosity Shop illustrated Frank Reynolds £30-50*
- 432 Volume two, Christopher Kelly, Universal Geography, with plates and maps, 1817, calf £50-70*
- 433 Edwardian clothing including Astrakhan muff etc in 1936 Kirkland Kings Lynn box £20-40*
- 434 A Japanese painting on porcelain, Mt Fuji and flying cranes, 3" x 19" £20-30*
- 435 Alfred.H.Vickers oil on canvas of a town by a river with figures and horse and cart, signed and dated lower right 1873, 12" x 24" £200-400*



- 436 Two lake and river scene oils on canvas £20-40*

***THIS LOT IS SUBJECT TO 17% COMMISSION PLUS VAT. PLEASE READ OUR TERMS AND CONDITIONS.**

- 437 A 19th Century oil on canvas of a Victorian lady and gent, 9" x 7" £50-80*
- 438 A marine scene print plus Kim Kent oil on canvas of steam thrashing scenes £20-40*
- 439 Two oils on board, birds and fruit plus still life, 11" x 8" £20-40*
- 440 Various volumes including Girl Annual No.1, c1822 Bible etc £20-30*
- 441 An Afghan rug, 61" x 39" £30-50*
- 442 A Russian (possibly Kazak) red ground carpet with central medallions, 153" x 86" £200-250*
- 443 A Malaysian gilt metal and painted porcelain 'Marie Antoinette' clock £70-90*
- 444 An Italian gilt metal and painted porcelain mantel clock £70-100*



Lots 443 and 444

- 445 An oval mahogany mirror, cane stool plus a small suitcase £20-30*
- 446 Various jewellery display pads £20-30*
- 447 Various jewellery display pads £20-30*
- 448 Various jewellery display pads £20-30*
- 449 Various jewellery display pads £20-30*
- 450 An HMV table top 78 player £30-40*
- 451 Beswick horse head plaques, Royal Doulton Australian themed plates plus other china and glass £20-40*
- 452 A modern Chinese brown and floral vase, height 21" £20-40*
- 453 A modern Chinese black and floral vase, height 18" £20-40*
- 454 A modern Chinese peacock and floral vase, height 24" £30-50*
- 455 A modern Chinese blue floral and bird vase, height 24" £30-50*

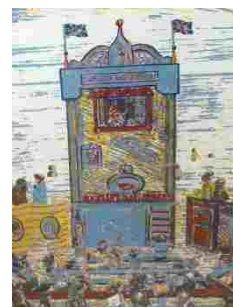


Lots 452, 453, 454 and 455

- 456 A 19th Century rectangular pierced brass trivet on four turned legs, 14 1/2" wide £30-50*
- 457 A Persian carpet with stylised medallions, 144" x 77" £70-100*
- 458 A 19th Century Masons ironstone floral plate plus a blue and white deer and house plate £20-30*
- 459 A mahogany drop dial wall clock £70-100*
- 460 A Japanese cloth female musician in glazed case £40-60*
- 461 Various volumes including Earl of Cranbrook, Parnassian Molehill, unopened copy letters, June Baren, Wiltshire Forefathers plus other volumes £30-50*
- 462 Two albums of professional photos of Southwold and Lowestoft, a wide range of topographical and social life £50-80*
- 463 One volume, Memorials of C.H.O. Daniel 1921, 1/2 vellum in slip case £20-40*
- 464 Tony Copsey, one volume, Book Distribution and Printing in Suffolk 1534-1850, full blue Morocco in slip case, Suffolk Writers until 1800 signed copy plus his own preliminary volume, Suffolk imprints to 1850 £50-80*
- 465 Stewart Evans and Paul Gainey, 'The Lodger', 'The Artist' and 'Escape of Jack the Ripper', signed volume plus Nicholas Conner and Stewart P Evans 'The Man Who Hunted the Ripper', inscribed copy £30-40*
- 466 G.H.Andrews, watercolour laid on canvas of Lowestoft Harbour with boats entering harbour, signed and dated lower right, 17" x 43" £500-800*



- 467 John Reay lithograph of Punch and Judy, 30 1/2" x 22 1/2" £50-70*



- 468 John Reay lithograph of Punch and Judy, signed in pencil lower right John Reay A/P, 32" x 34" £60-80*
- 469 John Reay impressionist oil on board, half length portrait of a lady, signed lower right, 48" x 32" £200-400*
- 470 John Reay impressionist oil on board of a lady lying down, signed top left, 48" x 40" £200-400*
- 471 A Chinese dragon decorated silkwork tray, 12" x 26" £40-60*
- 472 Two watercolours by the same hand, fortified harbour and beached sailboat, 2" x 3" £30-50*
- 473 An indistinctly signed etching of a pair of long shore men with nets, 7" x 11" £40-60*
- 474 A box of mixed items including LP's, stamps, barometer, Regent 10x50 binoculars, 1970 Ipswich Town programmes etc £30-50*
- 475 A Royal Doulton Flambe vase 6 1/2" an oak Enfield mantel clock plus Aynsley china etc £30-50*
- 476 George Blackie Sticks (1843-1938) watercolour of a country lane and cottage, signed and dated July 10 1886 9 1/2" x 5 1/2" plus one other watercolour of a sailing ship, monogrammed C.T. 4 1/2" 6 1/2" £60-100*
- 477 An indistinctly signed etching of a male figure in rapture, 14" x 7" £50-70*
- 478 An etching titled The Collector of Japanese prints 1/5 signed lower right 13" x 17" plus a W.Merz print of a continental mountain and lake scene £40-50*
- 479 Sale poster, Catchpole and Richards, Lowestoft, four freehold houses 1948, 26" x 17" £30-50*
- 480 I.G.Slufius single page innocenjivs PPXI 1685 plus engraving, Richardus Bentleius 1710 £20-40*
- 481 Janinet after Lavreince 18th Century coloured print L'indescretion, 15" x 11" £50-80*
- 482 Frank Gillett (1877-1927) fox hunting scene etching, signed lower right, monogram G lower left, 11" x 14" £50-70*
- 483 A.M.Trechslin, botanical print, Gloire Des Rosannes, 18" x 13" £20-30*
- 484 1853 Martin and Hood plan of building land near the Rly Station and harbour at Lowestoft, 10" x 25" £40-50*
- 485 Japanese woodblock print, Hillside Village Street, signed top right, 15" x 11" £30-50*
- 486 Four Henry Charles Trery coloured prints, The Royal Hotel, Lowestoft from Pakefield Cliff and The Esplanade, 10" x 16" £70-100*
- 487 A set of four 19th Century Alkin coloured prints, The First Steeplechase on Record, 1839, 13" x 14" £30-50*
- 488 H.Cheffer oil of a lake scene plus Alan.B.Charlton two watercolours 'Culler Cross Bay' and 'St Marys Island Whitby Bay' £20-40*
- 489 Emmanuel Bowen, outline coloured map 'An Accurate Map of the County of Norfolk', 1749, 22" x 29" £100-120*
- 490 A Chinese lithograph of a mounted hunter with two pronged projectile, signed, 21" x 17" £30-40*
- 491 A manual of seamanship, three volumes plus one other £20-30*
- 492 A print in Picasso style, label version, Seize Peintures 1939-43 Les Editions Du Chene, Paris 1943, 10" x 8" £20-40*
- 493 J.Roper, coloured Colchester Town plan 1805, 7" x 9" £20-40*
- 494 Christopher Saxton, full coloured map of Suffolk, 1575 (trimmed and laid on card), 13" x 9" £200-300*



- 495 Various pictures to include Oddfellows print, oil of an Arab with canoe and water buffalo etc £20-40*
- 496 A Junhams mahogany cased mantel clock £40-50*
- 497 A 9ct gold heart brooch (as found) with a gilt butterfly pendant brooch £20-30*
- 498 A South American white metal eight branch chandelier, the central sections in Austro Hungarian style with later additions £900-1100*
- 499 Two Bunbury continental landscape watercolours £20-40*
- 500 A walnut watch collectors storage box £30-50*

***THIS LOT IS SUBJECT TO 17% COMMISSION PLUS VAT. PLEASE READ OUR TERMS AND CONDITIONS.**

FURNITURE AND COURTYARD

Lots 1001 – 1195

ALL MEASUREMENTS ARE APPROXIMATE

AFTER 5 WORKING DAYS, STORAGE CHARGES OF £2 + VAT PER LOT / PER DAY WILL APPLY TO ANY FURNITURE THAT HAS NOT BEEN COLLECTED

- 1001 A modern pine five shelved bookcase plus one other £20-30*
- 1002 A Victorian inlaid walnut trumpet workbox £50-70*
- 1003 A pair of 19th Century hollow seat elbow chairs £40-60*
- 1004 An Edwardian inlaid mahogany sideboard £60-80*
- 1005 A green leather button back swivel armchair £30-40*
- 1006 A sky blue leather button back swivel armchair £50-70*



- 1007 A 1930's walnut cocktail display cabinet £40-60*
- 1008 A 19th Century oval oak barley twist gate leg table and a horse on a stand £30-40*
- 1009 An oak gate leg table £40-60*
- 1010 A 19th Century oak gate leg table on bobbin turned legs and an early 20th Century bi-fold wooden screen £30-40*
- 1011 An 18th Century oak plank chest (split top) £40-60*
- 1012 An 18th Century carved oak two panel coffer £100-150*
- 1013 A Victorian painted pine chest of two short and three long drawers £40-60*
- 1014 A walnut glass top coffee table with shell carving and a Victorian bedroom chair (as found) £30-40*
- 1015 A Victorian airer and a vintage travelling trunk £30-40*

- 1016 A Georgian mahogany bow fronted chest of two short and two long drawers on bracket feet £80-120*
- 1017 A modern pine glazed bookcase with chest of two short and three long drawers below £60-80*
- 1018 A Georgian oak bureau with four graduated drawers on bracket feet £100-150*
- 1019 A mahogany astral glazed two door bookcase on cabriole legs with claw and ball feet £80-120*
- 1020 A nest of three mahogany tables, a side table and a canvas camp bed £20-40*
- 1021 A modern revolving bookcase £30-40*
- 1022 A Victorian mahogany tray top tripod table on barley twist column £50-70*
- 1023 An Edwardian shaped topped two tier occasional table £20-30*
- 1024 A reproduction mahogany astral glazed bookcase sideboard £20-30*
- 1025 A cane tub chair, a circular cane and glass top occasional table, a modern pine pedestal drop leaf dining table £40-60*
- 1026 A modern pine two door wardrobe £40-60*
- 1027 A rectangular oak coffee table £20-30*
- 1028 A reproduction miniature mahogany chest of eight drawers, a bedroom stool and one other £40-60*
- 1029 A 19th Century mahogany linen press over two short and two long drawers £70-100*
- 1030 A vintage blue painted childs bed £20-40*
- 1031 An American walnut two tier buffet with two cupboards below £70-100*
- 1032 A modern pine two door wardrobe £50-80*
- 1033 A blue and yellow painted chest of three long drawers, an Edwardian piano stool, a mahogany trolley and an oak stool £30-50*
- 1034 A modern beech nine drawer unit £40-60*
- 1035 A 19th Century country made stick back elbow chair £60-80*
- 1036 An oak glazed wall hanging corner cupboard £20-40*
- 1037 A Victorian mahogany floral upholstered frame armchair £20-40*
- 1038 An 18th Century oak panelled coffer with later carving £150-200*

***THIS LOT IS SUBJECT TO 17% COMMISSION PLUS VAT. PLEASE READ OUR TERMS AND CONDITIONS.**

- 1039 A set of four 1970's Tavo, Belgium chrome and faux rosewood kitchenette dining chairs, a Jack Grimble shaped occasional table and retro nest of three tile topped tables £30-40*
- 1040 A mahogany two over one drawer dressing table £20-30*
- 1041 An Edwardian mahogany two over two drawers dressing table £20-30*
- 1042 A modern oak shelf back dresser £30-50*
- 1043 A reproduction mahogany shaped front sideboard and corner cupboard £50-70*
- 1044 Three various swing toilet mirrors £30-50*
- 1045 A large Victorian mahogany six drawer dressing table with mirror back £10-20*
- 1046 A modern light oak chest of five drawers, a mahogany cane seat elbow chair, a white painted bookcase and kitchen chair £30-40*
- 1047 Two pair of 19th Century bar back chairs with matching upholstery £20-40*
- 1048 A 19th Century inlaid and cross-banded mahogany desk converted from a square piano £100-150*



- 1049 A black painted iron framed single bed £30-50*
- 1050 A dark Ercol drop leaf coffee table, a trolley and a high chair £20-40*
- 1051 A reproduction mahogany D end table with single leaf £20-30*
- 1052 An oval gate leg table and a mahogany drawer cash till by G.H. Gledhill & Sons Ltd £30-40*
- 1053 A dark bentwood coat stand designed to sit flush against a wall, a bedside cabinet, a string top stool and a director's chair £40-60*
- 1054 An electric reclining chair in modern brown and cream upholstery £30-50*
- 1055 A pair of carved beechwood blue upholstered elbow chairs £30-50*
- 1056 An Edwardian carved mahogany sideboard (back missing) £20-30*

- 1057 A Victorian mahogany swing toilet mirror and small Sutherland table £30-50*
- 1058 A modern wooden frame and terracotta upholstered three piece suite £40-60*
- 1059 A beige leaf design modern three piece suite £40-60*
- 1060 A carousel horse on a stand and child's loom style chair £40-60*
- 1061 A set of six upholstered Ercol dining chairs £20-40*
- 1062 A large mahogany six drawer twin pedestal partners desk with leather inset top £50-80*
- 1063 The matching extension to lot 1062 or stand alone side table and a small pine bedside cabinet £20-30*
- 1064 A set of four mahogany beige floral dining chairs on fluted legs £50-70*
- 1065 A large metal storage trunk £20-30*
- 1066 A mahogany sideboard with two central drawers flanked by cupboards on cabriole legs £20-30*
- 1067 A wrought iron spiral staircase design plant stand £30-40*
- 1068 A two drawer two door cupboard with iron mounted panel doors £50-70*
- 1069 A Victorian mahogany swing toilet mirror £20-40*
- 1070 An oak octagonal tilt top table with floral woolwork top £20-40*
- 1071 A Jacobean style carved oak elbow chair £50-70*
- 1072 An American spindle back rocking chair £20-40*
- 1073 A reproduction mahogany two drawer sofa table £30-50*
- 1074 A 19th Century mahogany eight day long case clock with painted arch florally painted dial, marked J. Moller, Norwich £200-300*



- 1075 A reproduction mahogany long case clock with circular dial marked Polaris with battery movement £30-50*

***THIS LOT IS SUBJECT TO 17% COMMISSION PLUS VAT. PLEASE READ OUR TERMS AND CONDITIONS.**

- 1076 An Edwardian mahogany shaped top occasional table, a walnut two flap bedside chest and a mahogany standard lamp with under shelf £50-70*
- 1077 A 19th Century circular mahogany snap top tripod table £30-40*
- 1078 A 19th Century eight day mahogany long case clock with painted arch dial depicting African scenes, marked Jas Briscall, Birmingham £300-500*



- 1079 A large painted six section theatre back drop of a dressing screen reputedly from a Drury Lane theatre £50-80*
- 1080 A pine single bed frame £20-40*
- 1081 A reproduction mahogany astral glazed corner cupboard £20-30*
- 1082 An Edwardian mahogany and floral upholstered tub chair £30-40*
- 1083 A 19th Century rosewood fold over top card table on shaped column, platform base and claw feet £100-150*



- 1084 A nest of two tables and 19th Century mahogany snap top table £40-60*
- 1085 A large oak panelled chest containing 18th Century and later timbers £170-200*
- 1086 A reproduction shaped front bedside chest of four drawers and bedside table with single drawer £30-40*
- 1087 A Georgian style mahogany and parcel gilt wall mirror with inlaid shell decoration HoHo bird mount and an oval gilt mirror £50-70*

- 1088 A Victorian mahogany folding top card table on carved column and quatrefoil base £80-120*
- 1089 Two pine church pews, length approx 6 ft £40-60*
- 1090 A Georgian oak four door bureau on bracket feet £60-80*



- 1091 Two reclaimed pine church pews £40-60*
- 1092 An oval gate leg table £40-60*
- 1093 A small oak open book shelf £20-40*
- 1094 Two reclaimed pine church pews, one 8 ft long and the other 5ft £40-60*
- 1095 A Victorian pine blanket chest £20-40*
- 1096 WITHDRAWN
- 1097 Two reclaimed pine church pews £40-60*
- 1098 A triple mirror and an Antique Shop sign £30-40*
- 1099 An Edwardian inlaid mahogany dressing table £20-30*
- 1100 A pine two door glazed hanging cupboard £30-40*
- 1101 A 19th Century mahogany bow front chest of three drawers £30-50*
- 1102 An Edwardian inlaid mahogany revolving desk chair £70-90*
- 1103 A French 4' 6" Corbiere crackle glazed finished bed with tapestry upholstery complete with side rails and mattress supports £75-120*
- 1104 A modern collage in a gilt wood frame £20-30*
- 1105 An oak mirror door corner wardrobe with single drawer below £30-40*
- 1106 No Lot
- 1107 Two bags of wood veneers and a box containing piano repair tools and parts £20-40*
- 1108 An oak case granddaughter clock £20-30*

***THIS LOT IS SUBJECT TO 17% COMMISSION PLUS VAT. PLEASE READ OUR TERMS AND CONDITIONS.**

1109 A Victorian birch single mirror door wardrobe £100-150*



1129 A Victorian carved mahogany scroll back chaise longue £30-50*



1110 An Art Nouveau oak five tier open bookcase, a swing toilet mirror and another bookshelf £30-40*

1111 A 1960's Grundig radiogram £30-40*

1112 An ebonised piano with ivory keys by Rud IBach Sohn, Germany £20-40*

1113 A nest of three pine occasional tables £20-30*

1114 An oak telephone table £20-30*

1115 Three 19th Century mahogany bar back chairs and a child's chair £20-30*

1116 A Victorian carved oak dining table on bulbous and carved fluted legs £40-60*

1117 A set of six Victorian Carolean style carved oak chairs plus two carvers with non-matching carving £90-120*

1118 An oak draw leaf table, a set of four oak dining chairs and two wheelback chairs £40-60*

1119 An American style tapestry upholstered rocking chair £30-50*

1120 A 19th Century elm Windsor elbow chair £60-80*

1121 A reproduction mahogany nine drawer pedestal desk with maroon leather top £50-70*

1122 A metal bound trunk £20-40*

1123 An oak three drawer chest and a side table £30-40*

1124 A walnut circular coffee table and an inlaid mahogany wine table £40-60*

1125 A 19th Century metal bound pine trunk £20-40*

1126 Various sundries including brass stair rods, saws etc £20-40*

1127 A mahogany eight drawer pedestal desk with sky blue leather inset top £100-150*

1128 A pair of Edwardian mahogany and salmon draylon upholstery tub chairs £50-80*

1130 A long cushion edge refectory table £70-100*

1131 A set of six mahogany spindle back chairs with red leather seats £60-80*

1132 A white painted metal double bed frame £20-40*

1133 Various garden and other tools and a marble plinth £20-30*

1134 A Flymo contractor L50 (as found) and various garden tools £30-40*

1135 A Quantum Tru Comfort mobility scooter £30-50*

1136 Four bags of golf clubs and a golf trolley £30-50*

1137 An Elswick Hopper blue painted lady's bicycle with basket to the front £30-40*

1138 A large woodworking bench with a vice £30-50*

1139 A marble top table with ornate metal work base £30-50*

1140 A tin travelling trunk containing sundries £20-30*

1141 An antique bread oven £20-40*

1142 A line painter, two pitch forks, a filing cabinet and four wagon wheels £30-50*

1143 A concrete cherub garden statue £30-40*

1144 An apple storage rack and a stained glass window £30-40*

1145 Stoneware flagons, vintage golf clubs etc £40-60*

1146 A selection of plant pots, a vice and a plant stand made from horse shoes £20-40*

1147 A large wooden outdoor easel £20-30*

1148 A 19th Century pine overmantel mirror £40-60*

1149 An American ebonised elbow chair, two tea trolleys, a dining chair, a loom style chair and linen basket £40-60*

1150 A modern black metal clothes rail £20-30*

1151 A small stool with bead painting seat, a nest of three oak table and one other £20-40*

***THIS LOT IS SUBJECT TO 17% COMMISSION PLUS VAT. PLEASE READ OUR TERMS AND CONDITIONS.**

1152	A modern pine refectory style table and two elm seat chairs	£60-80*	1177	A modern pine two tier food cupboard	£40-60*
1153	A Victorian painted pine kneehole desk	£40-60*	1178	A painted blanket chest, an oak trolley, an occasional table and an inlaid mahogany dressing table plus two folding card tables	£30-40*
1154	A wrought iron and brass coffee table and an oak occasional table	£20-30*	1179	A Victorian circular inlaid walnut and mahogany tripod table	£40-60*
1155	An oak sideboard and two modern drop leaf tables	£20-30*	1180	An enamel topped kitchen table	£20-40*
1156	Two oak sideboard washstands and an occasional table	£20-40*	1181	An oak fold over top table and two chairs	£30-40*
1157	A Victorian rectangular pine kitchen table	£40-60*	1182	A rectangular pine table	£30-50*
1158	An Edwardian carved mahogany tapestry armchair	£30-50*	1183	An oval oak gate leg table, a set of four ladderback chairs and a mahogany elbow chair	£30-40*
1159	A set of six 19th Century hollow seat bar back dining chairs	£60-100*	1184	An light oak leaded bureau bookcase	£30-50*
1160	A mahogany standard lamp and an oval gate leg table	£30-40*	1185	A pair of green draylon upholstered and wooden frame 1930's armchairs	£40-60*
1161	A painted cot	£20-30*	1186	A reproduction mahogany 'D' end dining table and four chairs	£40-60*
1162	A mahogany five shelved bookcase with two reclaimed carved panels	£40-50*	1187	A modern draw leaf table and six dining chairs including two carvers	£40-60*
1163	A mahogany seven shelved bookcase with central reclaimed carved wooden bust of a lady	£40-50*	1188	An Edwardian mahogany shaped top table, a coffee table and standard lamp	£20-30*
1164	A mahogany five shelved bookcase with two reclaimed carved panels	£40-50*	1189	A set of eight fruitwood hard seat chairs	£60-80*
1165	A 19th Century oak floor standing corner cupboard with two astral glazed doors	£50-70*	1190	A Victorian mahogany extending dining table with three additional leaves	£70-100*
1166	An oak draw leaf table and four chairs	£50-70*	1191	A set of four Edwardian floral upholstered dining chairs	£30-50*
1167	An oak revolving bookcase on cabriole legs and Edwardian octagonal mahogany occasional table	£40-60*	1192	A modern pine kitchen table and formica top table	£30-50*
1168	A florally upholstered wingback armchair	£20-40*	1193	A set of four dark Ercol dining chairs	£30-50*
1169	Two cane four shelved units	£20-40*	1194	A dark Ercol style two door glazed bureau cabinet	£20-40*
1170	An Edwardian inlaid mahogany elbow chair, a Victorian mahogany bar back elbow chair and a pair of dining chairs	£40-60*	1195	A single bar back leather upholstered bedroom chair with twisted bar backs and brass inset to centre back panel	£30-50
1171	A set of six dining chairs with green draylon upholstery	£30-50*			
1172	A large rectangular oak coffee table	£30-50*			
1173	A set of six oak ladderback chairs with dark green leather upholstery	£40-60*			
1174	An oval oak extending dinner table with two extra leaves	£60-80*			
1175	A Victorian mahogany chest of two short and two long drawers	£60-80*			
1176	A rectangular mahogany side table on pad feet	£20-30*			

***THIS LOT IS SUBJECT TO 17% COMMISSION PLUS VAT. PLEASE READ OUR TERMS AND CONDITIONS.**

**TOYS AND COLLECTABLES SALE
THURSDAY 30TH NOVEMBER**

**MILITARIA, MEDALS, AIR GUNS,
SPORTING GUNS AND FIREARMS
SALE ETC
FRIDAY 1ST DECEMBER**

**COMMENCING AT 10AM
BOTH DAYS**

VIEWING:

Tuesday 28th November between 9am-5pm

Wednesday 29th November between
9am-7.30pm

Thursday 30th November between
8am-10am and 3pm-7.30pm

Friday 1st December between 8am-10am

For further information, please contact Bob Pearse for Toys and Collectables and Mark Whistler for Militaria on 01502 713490

GENERAL CONDITIONS OF SALE

- 1 THE BUYER** - The highest bidder acknowledged as such by the auctioneer will be the buyer. If any dispute arises, the auctioneer shall have absolute discretion to settle the matter. The auctioneer shall rule the bidding and no bid shall be retracted. The auctioneer reserves the right to refuse any bid. The bidder in the room who is successful in purchasing any lot or lots is entirely responsible for paying for such lot or lots in accordance with our general conditions of sale. Purchases made on behalf of a third party are entirely the responsibility of the bidder in the room. The auctioneer reserves the right to bid on behalf of the vendors for any lot and to withdraw, consolidate or divide any lot or lots.
- 2 REGISTRATION** - To assist the progress of sale, all prospective buyers must register their name and address at reception and collect a bidding number before the sale commences. Should there be any doubts as to price or buyer, please draw the auctioneer's attention to it immediately.
- 3 BUYER'S PREMIUM** - A buyer's premium of 17% plus VAT at the standard rate of the hammer price is payable on each lot.
- 4 VENDOR'S COMMISSION** - Our standard Vendor's commission of 14% plus VAT will be charged up to £1000 - rate negotiable prior to sale. In addition, each lot will be subject to a lotting fee of £3 plus VAT.
- 5 PURCHASE VIA LIVE BIDDING** - Any lots purchased via the saleroom.com live auction service will be subject to an additional 3% commission charge plus VAT at the current rate imposed on the hammer price. In completing the bidder registration on www.the-saleroom.com and providing your credit card details and unless alternative arrangements are made with Durrants you hereby agree to the following terms:
 - a) Durrants are authorised to charge the credit/debit card given in part or full payment including all fees for items successfully purchased in the auction via the sale-room.com, and
 - b) You are authorised to provide these credit/debit card details to Durrants through www.the-saleroom.com and agree that Durrants are entitled to ship the goods to the cardholder name and address provided in fulfilment of the sale.
- 6 VALUE ADDED TAX** - Lots on which Value Added Tax may be payable by the buyer on the "hammer price" are indicated in the catalogue by a symbol beside the lot number. The buyer shall pay any VAT which may be due on any amounts owed by the buyer under these conditions of sale at the rates prevailing on the day of the auction.
- 7 AUCTIONEERS MARGIN SCHEME** - The Auctioneers Margin Scheme allows auctioneers to sell items without VAT on the hammer price. Under the margin scheme an amount equivalent to VAT at the current rate is added to the buyer's premium. This amount cannot be refunded. The VAT element will not be shown separately on the buyer's invoice.
- 8 PAYMENTS**

Purchaser - Our methods of payment are with bank transfer, cash, debit or credit card (in person only) or by cheque supported by a valid guarantee card or bankers reference. All purchases must be paid in full on the day of the sale before any lot is removed from the premises. No goods will be released to buyers unknown to the auctioneers without adequate reference or before their cheques have cleared. Anyone who, for whatever reason, is unable to pay for their goods on the day of the sale must inform the Saleroom Manager as to when payment will be made. There is a 2% surcharge on credit card payments.

Vendor - Vendors will normally receive proceeds of sale 10 working days after. However, where individual consigned Lots have sold for £500 or above Durrants reserve the right to hold payment until we have been paid by the purchaser. We also reserve the right to rescind a sale, if it is clear that having pursued all the usual channels Durrants are unlikely to receive payment on the Lot in question. In such circumstances, the Lot(s) involved will be reoffered in a later Sale with the sale reserve (if applicable).
- 9 ATTRIBUTION AND CONDITION OF LOTS** - Every effort is made to ensure the accuracy of any statement as to authorship, attribution, origin, date, age, provenance and condition of any lot whether or not such statement forms part of the description of any such lot. Whether any such statement is made orally or in the catalogue it is an expression of opinion. Each buyer by making a bid for a lot acknowledges that he has satisfied himself fully as to the attribution and condition of the lot. If any damage is done to any lot at the viewing or before, during or after the sale, such damage shall be made good by the person committing such damage, principals being responsible for the acts of their servants, such damage to be assessed by the auctioneers. Written condition reports are available for all Lots upon request. Buyers that do not request condition reports forfeit their right to a refund, except where we are in breach of Contract.

Verbal condition reports will not be given. The latest that a condition report will be e-mailed or posted is the day immediately before the sale.
- 10 ATTRIBUTION OF PICTURES** - (Condition 7 also refers).
 - a) The forename(s) (or asterisks where not known) and surname of the artist indicates in our opinion a work by the artist
 - b) The initials of the forename(s) and the surname of the artist indicates in our opinion a work of the period of the artist which may be wholly or in part his work.
 - c) The surname of the artist indicates in our opinion a work of the school or by one of the followers of the artist or in his style and of uncertain date.
 - d) Bears signature indicates in our opinion that this is not the signature of the artist.
 - e) All other terms are self-explanatory.
- 11 OWNERSHIP OF PURCHASES** - The ownership of the lot(s) purchased will not pass to the buyer until the buyer has paid the auctioneers in full the total amount due and the auctioneers have applied such payment to the lot.
- 12 TRANSFER OF RISK** - Each lot shall be at the purchaser's sole risk from the fall of the hammer and shall be sold with all faults and imperfections. The purchaser is deemed to have inspected the lots and satisfied himself as to their condition. The liability to insure any purchased Lot shall pass from the auctioneer to the purchaser on the fall of the hammer.
- 13 COMMISSION BIDS** - If instructed, the auctioneers will execute bids and advise prospective purchasers. This service is free. Lots will always be purchased as cheaply as is allowed by such other bids and reserves as are on the auctioneer's books. In the event of identical bids, the earliest will take precedence. There must always be a maximum limit indicated, i.e. the amount to which you would bid if you were attending the auction yourself. "Buy" or unlimited bids will not be accepted. Commission bids placed by telephone are accepted at the client's risk. We do accept commission bids by facsimile. We urge our clients to place such commission bids within one hour of the close of the view day.
- 14 TELEPHONE BIDS** - Requests for telephone bidding must be registered with the Saleroom Manager within one hour of the close of the view day. It may not be possible to accept requests on sale days. Written confirmation of such bids from persons unknown to the auctioneers must be received before the commencement of the sale. Whilst every effort will be made to execute telephone bidding, the auctioneers cannot be held responsible for any default or neglect in connection with this service. All such arrangements therefore are made entirely at the prospective buyer's risk.
- 15 COLLECTION OF GOODS** - At the purchaser's sole cost and expense, the purchaser shall collect the lot(s) purchased not later than 12 mid-day after the day of the auction, not before payment to the auctioneers of the total amount due. After 5 working days, storage charges of £2 + VAT per day per lot will apply to any goods that have not been collected.
- 16 POSTAGE / SHIPPING** - Goods will not be released to couriers unless they are delivering to the address that the buyer has used for registration. Couriers are instructed not to take alternate delivery instructions once dispatched
- 17 COMPLIANCE** - Upon failure of any purchaser to comply with any of the above conditions any money deposited by the purchaser in part payments shall be forfeited to the owner of the lot, he paying there from, all just expenses. Any lot not paid for within 1 month of the purchase date shall be resold by public auction or private contract and the deficiency (if any) arising from such a resale together with all expenses attending the same shall be made good by the defaulter at this sale who shall have no claim to any surplus which may arise on a resale.
- 18 PRE SALE ESTIMATES** - Given by the auctioneers or a member of their staff are their opinion as to what they consider any particular lot is likely to realise. However any lot may sell at a figure less than the lower estimate and for more than the higher estimated figure. The auctioneers and their staff reserve the right to alter their pre-sale estimates, either upwards or downwards, on any lot at any time, up until such time as the lot is offered for sale.
- 19 RESERVES** - The auctioneers and vendors reserve the right:
 - a) To remove the reserve completely from a previously reserved lot at any time up until it is offered for sale.
 - b) To place a reserve on a previously unreserved lot at any time up until it is offered for sale.
 - c) To alter a reserve, either upwards or downwards, on any lot at any time up until it is offered for sale.
 - d) Should any item fail to sell at the reserve price on the day of the Auction they will be subject to commission of 3% of the Reserve Price, subject to a minimum fee of £5 plus VAT.
- 20 THIRD PARTY LIABILITY** - Every person on the auctioneers' premises before, during or after a sale or at any other time, shall be deemed to be there at their own risk and shall have no claim against the auctioneer in respect of any injury they may sustain or any accident which may occur.
- 21 ANY NOTICES** - Any notices that may be displayed from time to time by the auctioneers in the sale ground or salerooms shall be deemed to form part of and be included within the general conditions of sale.
- 22 MONEY LAUNDERING REGULATIONS** - In order to comply with current anti-money laundering legislation we are unable to accept cash payments over £8,000. Any purchaser wishing to pay cash for any purchase over £1,000 may be asked for identification e.g. Passport or photo driving licence.
- 23 DROIT DE SUITE ROYALTY CHARGES** - In essence this charge will be made to the purchaser of any work of art that has been produced by a living artist or for a period of up to 70yrs after the artist's death, on lots with a hammer price more than the UK sterling equivalent of €1,000. Please refer to www.dacs.org.uk for further rules and current exchange rates. The royalty charge will be added to purchase invoices and must be paid before items can be cleared. All Royalty charges are paid to the Design and Artists Copyright Society (DACS) by the Auctioneers and no handling costs or additional fees with respect to these charges will be retained by the Auctioneer.
- 24 RICS REGULATION**
 - a) All Clients monies are paid into our Auction Clients Account with Barclays Bank PLC Norfolk Business and Agricultural Corporate Banking Centre, Norwich, Norfolk (any interest accrued monies held will be retained by Durrants)
 - b) Durrants operates an RICS approved complaints policy, details can be found on our website www.durrants.com
- 25 RESCISSION** - Notwithstanding any other terms of these Conditions, if within fourteen days of the date of sale Durrants receive from the buyer of any lot notice in writing that in his view the lot is a deliberate forgery and the lot is returned to them in this period in the same condition as at the time of sale and produces written evidence, the burden of proof to be upon the buyer, satisfies Durrants that considered in the light of the entry in the catalogue the lot is a deliberate forgery then the sale of the lot will be rescinded. The purchase price will be refunded once the sum has been returned to Durrants by the Seller.

If before the proceeds of the sale have been paid to the Seller Durrants receives notice from the buyer that, in the buyers view the sale should be rescinded and Durrants agrees with that view, Durrants will rescind the sale and refund to the Buyer any amount paid to Durrants in respect of the Lot, and if such notice is received after payment of the proceeds of this sale the Seller will on notice reimburse Durrants to the full amount of the sum refunded to the Buyer.
- 26 REPRODUCTIONS** - Owing to the large number of Third Reich and other uniforms and accoutrements being used for films, television and plays, it becomes increasingly difficult to ascertain the authenticity of certain pieces. We catalogue all items as seen, and offer no guarantee as to their authenticity. The terms 'bronze', 'silver' and 'gold' refer to the grades in which medals, badges, etc., were awarded and not to their composition. Items described as (PATTERN) are an example of the described item with no guarantee of age or authenticity

BUYER REGISTRATION FORM

Please enter the information required below before taking it to a member of staff. Please ensure that you have a suitable form of identification to verify the information you are giving, e.g. driving licence, utility bill etc. Once you have done this you will be issued with a card and this will have your buyer's number on it

Mr / Mrs / Miss / Other:	_____	Initials:	_____	Surname:	_____
Company	_____				
Address	_____				

Tel:	_____				
Mobile:	_____				
E-mail:	_____				
Credit / Debit Card No:	_____				
Start Date:	_____	Expiry Date:	_____	Security Code:	_____

Where a buyer is registering for the first time and leaving a commission bid the auctioneers reserve the right to undertake a credit card transaction using the details which have been supplied if the purchase is successful.

For Office Use Only
Buyers Registration Number: -

DURRANTS AUCTION ROOMS

The Old School House, Peddars Lane, Beccles, Suffolk, NR34 9UE

Tel: 01502 713490

Email: auctionrooms@durrants.com

Web: www.durrants.com



DIRECTIONS

FROM A12/A145 (SOUTH)

On entering Beccles, at the first set of traffic lights turn right into Peddars Lane. The Auction Rooms are 200 metres along the road on your right.

FROM A143/A146 (BURY ST EDMUNDS & NORWICH)

Approaching Beccles, at the McDonald's roundabout, go straight over, then take the first right via Gillingham over the bridge into Beccles. Follow the road past the new Tesco, go straight at the first set of traffic lights, right at the second and the Auction Rooms are 100 metres on your left.

FROM A146 (LOWESTOFT)

At the Worlingham roundabout bear left through Worlingham. At the first set of lights go straight over, at the second turn left and the Auction Rooms are 100 metres on your left.

WWW.DURRANTS.COM

BECCLES
01502 712122
10 New Market
Beccles
Suffolk
NR34 9HA

DISS
01379 642233
Pump Hill House
2b Market Hill
Diss, Norfolk
IP22 4WH

HARLESTON
01379 852217
32-34 Thoroughfare
Harleston
Norfolk
IP20 9AU

SOUTHWOLD
01502 723292
98 High Street
Southwold
Suffolk
IP18 6DP

HALESWORTH
01986 872553
12 Thoroughfare
Halesworth
Suffolk
IP19 8AH

AUCTION ROOMS
01502 713490
The Old School House
Peddars Lane
Beccles, Suffolk
NR34 9UE

MAYFAIR
0870 112 7099
Cashel House
15 Thayer Street
London
W1U 3JT