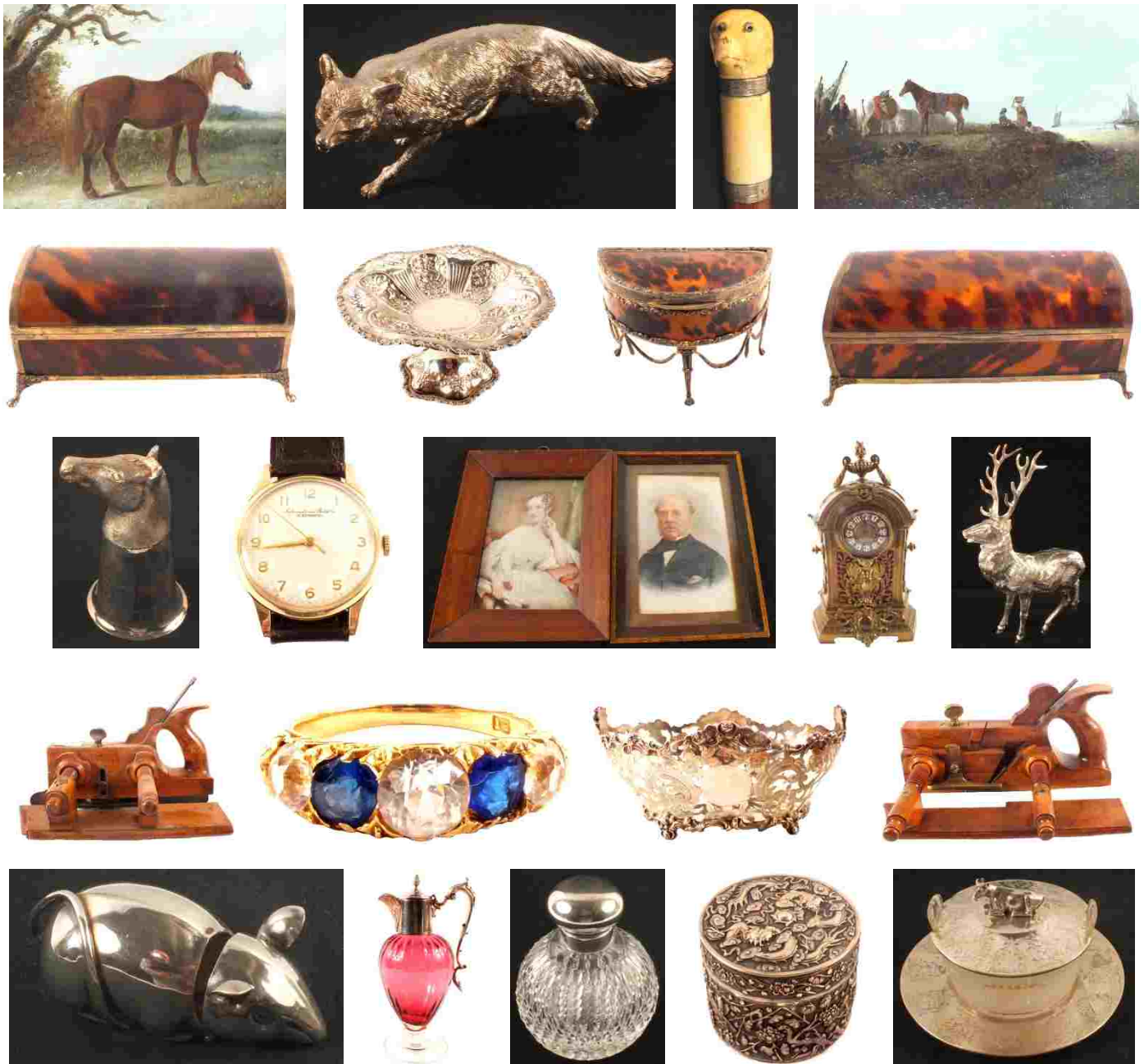


# DURRANTS

SINCE 1853

RESIDENTIAL  
AGRICULTURAL  
COMMERCIAL  
ON SITE AUCTIONS  
PROPERTY MANAGEMENT  
BUILDING CONSULTANCY  
AUCTION ROOMS  
HOLIDAY COTTAGES



Friday 15<sup>th</sup> September 2017

Antiques and Fine Art commencing 10.00am

Furniture plus Courtyard commencing at 1.00pm



ANTIQUES AND FINE ART WITH JEWELLERY,  
SILVER AND FURNITURE FEATURING A  
PRIVATE COLLECTION OF VINTAGE  
WOODWORKING TOOLS

Tel: 01502 713490

[WWW.DURRANTS.COM](http://WWW.DURRANTS.COM)

RICS ACCREDITED VALUERS AND AUCTIONEERS

Catalogues

£3.00

# NOTES FOR PROSPECTIVE PURCHASERS

## DURRANTS AUCTIONEERS AND VALUERS

Durrants' experience of Auction Sales dates back to 1853 and since that time we have continued to undertake chattel sales and valuations throughout Norfolk and Suffolk.

From our Auction Rooms at Peddars Lane, Beccles we conduct Fine Art and Antique Auction Sales every month, interspersed with Specialist Sales.

Our team of Valuers and Auctioneers undertake valuations for probate and insurance purposes and provide advice for sale and family division.

RICS accredited Valuers and Auctioneers

## OUR SERVICE

With our own salerooms, experienced staff and removal vehicles we are able to offer a comprehensive and cost effective service to executors, solicitors and private clients.

- On site inspections at short notice by appointment
- Experienced valuers throughout the group
- Verbal advice or comprehensive reports
- Professional and confidential service
- Specialist valuations of furniture, ceramics, pictures, silver, jewellery, clocks and watches, books, toys and dolls, stamps, postcards, coins, Militaria, swords, medals Sporting Guns and Antique Firearms

Durrants has offices in Beccles, Halesworth, Southwold, Harleston and Diss. Each has a team of experienced Chartered Surveyors and Estate Agents, offering a wide range of services encompassing Agricultural, Residential, Commercial and Investment properties. We also have a specialist Planning and Design Group.

## FIREARMS

We have full R.F.D. capabilities enabling us to sell on your behalf all items that require licences. Our registered Firearms Dealership Number is Suffolk 252. We are always happy to help with any firearm queries, legal requirements or valuations.

## VIEWING

The Viewing days for the Friday 15<sup>th</sup> September Antiques and Fine Art with Jewellery, Silver and Furniture featuring a Private Collection of Barometers are:-

Tuesday 12<sup>th</sup> September between **9am and 5pm**  
Wednesday 13<sup>th</sup> September between **9am and 5pm**  
Thursday 14<sup>th</sup> September between **9am and 7.30pm**  
**The morning of the sale from 8am**

## SALE DAY TIMETABLE

The antiques sale starts at 10.00am in the upstairs saleroom at Lot 1.  
There will be no lunch break during the course of the day.  
Clearing is allowed during the sale in the upstairs saleroom.  
The furniture sale starts at 1pm at Lot 1001 in the ground floor saleroom.

## SUMMARY OF CATALOGUE

China, Glass, Clocks, Pictures, Wood, Metal, Pottery and Porcelain,  
Objects Vertue, Silver, Jewellery and Watches  
Furniture and Courtyard  
Missing Lot numbers – 373 and 452

Lots 1 – 518  
Lots 1001 - 1193

**For further images please visit [www.durrants.com](http://www.durrants.com) or [www.the-saleroom.com/durrants](http://www.the-saleroom.com/durrants)**

# FORTHCOMING EVENTS

**FREE VALUATIONS AND TAKING IN OF GOODS MONDAY TO FRIDAY  
BETWEEN 9AM - 5PM (EXCEPT SALE DAY) AND ALSO EVERY  
SATURDAY MORNING BETWEEN 9AM - 12 NOON**

## **AUCTION CALENDAR 2017**

**Friday 15<sup>th</sup> September**

Antiques and Fine Art with Jewellery and Silver

**Friday 6<sup>th</sup> October**

Antiques and Fine Art with Jewellery and Silver

**Friday 27<sup>th</sup> October**

Antiques and Fine Art with Jewellery and Silver

**Friday 17<sup>th</sup> November**

Antiques and Fine Art with Jewellery and Silver

**Thursday 30<sup>th</sup> November and Friday 1<sup>st</sup> December**

A two day sale of Toys, Collectables, Militaria, Medals, Air Guns, Sporting Guns and Firearms etc

**Friday 15<sup>th</sup> December**

Antiques and Fine Art with Jewellery and Silver

These dates may be subject to change – please contact us during the year to ensure you don't miss out!

## **VIEWING**

**Antique and Fine Art Sales** are on view the week of the sale - Tuesday and Wednesday 9am-5pm and Thursday 9am-7.30pm, or by appointment.

**Toy, Collectable and Militaria Sales** are on view the week of the sale - Tuesday 9am-5pm, Wednesday 9am-7.30pm and Thursday 8am-10am and 3pm-7.30pm  
(no viewing when the auction is in progress on the Thursday), or by appointment.

## **NO VIEWING WHILST ANY SALE IS IN PROGRESS**

All Auction catalogues, photographs, particulars and results are available online at [www.durrants.com](http://www.durrants.com)  
We are also happy to carry out additional and one off sales on site or at our Sale Rooms by arrangement.  
House clearances by arrangement.

**For further information please call:**

**Mark Whistler ANAVA** Auction Rooms Manager,  
Specialist Militaria, Firearms and Furniture Valuer  
01502 713490 or [mark.whistler@durrants.com](mailto:mark.whistler@durrants.com)

**Beverley Baker** Assistant Manager and  
Head of Administration  
01502 713490 or [auctionrooms@durrants.com](mailto:auctionrooms@durrants.com)

**Robert Pearse** Valuer for Stamps, Postcards,  
Collectables, Ceramics, Books and Watches  
01502 713490 or [auctionrooms@durrants.com](mailto:auctionrooms@durrants.com)

**James Felgate MNAVA** Valuer and Photographer  
01502 713490 or [auctionrooms@durrants.com](mailto:auctionrooms@durrants.com)

**Anna Paulding ANAVA** Auction Administrator /  
House Clearance Coordinator  
01502 713490 or [auctionrooms@durrants.com](mailto:auctionrooms@durrants.com)

**Karen Goring** Auction Administrator  
01502 713490 or [auctionrooms@durrants.com](mailto:auctionrooms@durrants.com)


## **ONLINE BIDDING**

We have teamed up with the-saleroom.com to allow you to bid at our auctions.  
Simply register on [www.the-saleroom.com/durrants](http://www.the-saleroom.com/durrants) under Live Auctions.

Bid online at our auctions through  
[the-saleroom.com](http://the-saleroom.com)


**CHINA, GLASS, CLOCKS, PICTURES,  
WOOD, METAL, POTTERY, PORCELAIN,  
OBJECTS VERTUE, SILVER, JEWELLERY  
AND WATCHES**

**Lots 1 – 518**

- |    |  |         |    |  |           |
|----|--|---------|----|--|-----------|
| 1  | A 19th Century fern leaf Jasperware jug plus other china (two trays)   | £30-50* | 22 | Egg cruets plus other silver plate including cutlery   | £40-60*   |
| 2  | Shelley bluebell and floral plus Minton bird and floral part tea sets  | £40-60* | 23 | Boxed Royal Doulton Twelve Days of Christmas china   | £20-40*   |
| 3  | A pair of silver plated candlesticks, teapot, pocket microscope and book, History of Suffolk by J.J.Raven 1895     | £30-50* | 24 | Boxed Thomas Webb and Edinburgh crystal glasses plus cut glass vases and decanters etc                     | £20-40*   |
| 4  | A Mappin & Webb silver plated clock, a Junghans clock plus table barometer   | £40-60* | 25 | Various tea wares plus other china (two boxes)   | £20-40*   |
| 5  | An Edwardian inlaid mahogany striking mantel clock   | £20-40* | 26 | Adams Calyx ware plus other china (two boxes)  | £20-40*   |
| 6  | A 19th Century brass bound writing slope   | £40-60* | 27 | Various watercolours, etching and prints (two boxes)   | £30-40*   |
| 7  | A 19th Century porcelain cabaret set (chipped tray) plus other china   | £20-40* | 28 | C.E.Ritchie portrait of a lady's head plus other pictures and a ducks head grip broly                      | £20-30*   |
| 8  | Two Dutch brass candle boxes plus a brass trivet   | £40-60* | 29 | F.Roth, two continental dry point etchings of street scenes plus various prints and watercolours           | £20-40*   |
| 9  | An Edwardian mahogany inlaid mantel clock with Winsor Bishop of Norwich retailer mark plus two silver plated items | £30-50* | 30 | A print of highland cattle, oak and frameless mirrors plus a brown and floral jug and bowl                 | £30-40*   |
| 10 | A brass oil lamp with yellow satin glass shade, hip flask plus other items   | £20-40* | 31 | A Martini advertising mirror, 33" x 22"  | £20-30*   |
| 11 | A Canadian tombstone Bailey hat plus a clockwork dog   | £20-30* | 32 | Alfred Sanders, oil on board, Duet Morning, 13" x 15"  | £20-40*   |
| 12 | A pair of silver plated four branch candelabras  | £30-40* | 33 | A 19th Century oval oil of head and shoulders of a lady, 23" x 18"   | £50-80*   |
| 13 | A Victorian copper kettle, conical light shade plus a brass lamp   | £30-50* | 34 | A signed Russell Flint print of a Spanish flower seller, 19" x 25"   | £50-80*   |
| 14 | A Minton floral jardinière, pottery fruit ornament and Enchanta dragon   | £20-40* | 35 | WITHDRAWN  |           |
| 15 | A 19th Century Paris floral vase plus a pair of Sarreguemines blue floral vases (cracked)                          | £20-40* | 36 | A Robert Morden outline coloured map of Buckinghamshire, 17" x 14"   | £30-50*   |
| 16 | An Edwardian Royal Albert orange and blue floral part tea set  | £20-40* | 37 | A John Speede full coloured map of Hartfordshire, 15" x 20"  | £120-180* |
| 17 | Millefiori and other paperweights plus glassware   | £30-40* |    |                        |           |
| 18 | Various cut glass drinking glasses (three trays)   | £40-60* | 38 | A Robert Morden outline coloured map of Bedfordshire   | £40-60*   |
| 19 | A Chinese lidded jar with dragon mount and handles   | £20-40* | 39 | A 19th Century needlework house, tree and floral sampler by Elizabeth Gibbs, aged 9 years, 1817, 12" x 16" | £80-120*  |
| 20 | A canteen of Mappin & Webb silver plated cutlery   | £60-80* | 40 | A Ogilby coloured road map, Huntingdon to Ipswich, c1690, 13" x 18"  | £60-80*   |
| 21 | A Tiffany style lamp shade, Alabaster table lamp etc   | £30-40* | 41 | A Boydell engraving, A View of the River Po in Italy, 1769 plus two others                                 | £30-50*   |

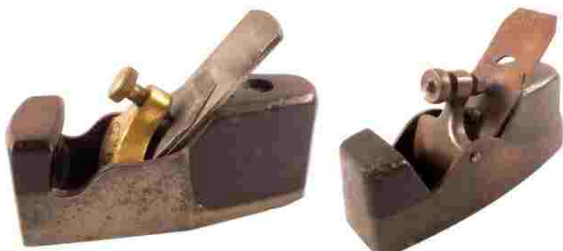
**\*THIS LOT IS SUBJECT TO 17% COMMISSION PLUS VAT. PLEASE READ OUR TERMS AND CONDITIONS.**



- |    |   |     |  |
|----|---|-----|--|
| 42 | Charles Watson, 1879 etching of Chelsea Embankment, 7" x 11" £50-70*                                | 63  | A box of various small clocks £30-50*  |
| 43 | Three country scene watercolours, Miller Smith, M.U.Evans and Adrian Bury £20-40*                   | 64  | A pair of heavy brass and iron andirons, 19th Century copper coal scuttle plus a coper coal helmet £40-60* |
| 44 | John Munnings, two oils on board of a horse and foal plus a harvest scene and one other oil £20-40* | 65  | A Belleek vase and shell dish plus other china and glass (two trays) £20-40*                               |
| 45 | Five 19th Century Rowlandson coloured Dr Syntax engravings, 5" x 8" £40-60*                         | 66  | Victorian copper lustre and other 19th Century china £20-30*   |
| 46 | Jack Savage (1910-2003), watercolour of a field farm scene, signed lower right, 10" x 14" £30-50*   | 67  | Staffordshire and Coalport Cottages plus various 19th Century china (some as found) £20-40*                |
| 47 | A river and church scene watercolour plus two other pictures £20-30*                                | 68  | Five European carved wooden leaf and figural panels £40-60*  |
| 48 | Two Ernest Moseling limited edition Jaguar car prints plus various others £20-40*                   | 69  | A 19th Century Maori wooden paddle, length 58" £150-200*   |
| 49 | Anthony Eagen, acrylic on board of a surreal landscape in typical style, 23" x 27" £30-50*          | 70  | A Turkish (possibly Canakkale) figural pottery ewer £50-80*  |
| 50 | John Hunter, watercolour of Mrs Nicholas Fitzgerald with her child, 1834, 23" x 17" £70-100*        | 70A | J.Balie, oil of fishing boats at moorings, signed lower left, 23" x 11" £60-100*                           |
| 51 | Edward Arden, watercolour of a woodland scene with sheep, 15" x 21" £50-70*                         |     |                         |
| 52 | V.Coverley-Price, monochrome watercolour of a mountain scene with country cottage, 8" x 13" £30-50* | 71  | Four 19th Century copper warming pans, each with wooden handle £30-50*                                     |
| 53 | David Murray, watercolour of a French village house, 1897, 17" x 9" £40-60*                         | 72  | Various Aboriginal and other tribal carvings including two bone axes £50-80*                               |
| 54 | W.C.Edwards (1874-78), pair of watercolours of port scenes with sailing ships, 7" x 12" £50-70*     | 73  | A Wedgwood porcelain clock, Caithness paperweight plus other items £20-40*                                 |
| 55 | Various Dutch and other brass and copper ware £20-40*   | 74  | A heavy set of three brass fire irons with pierced shovel and decorative ring handles, 32" long £35-55*    |
| 56 | A 19th Century European treen dairy bowl £40-60*  | 75  | Two trays of Royal commemorative china £20-30*   |
| 57 | A 19th Century European painted treen dairy bowl £40-60*  | 76  | Two trays of various Oriental china (some as found) £20-40*  |
| 58 | Three Damascus brass dishes with silver and copper inlays £40-60*                                   | 77  | A Franklin Mint Diana figure plus 19th Century and other figurines (some as found) £30-50*                 |
| 59 | Various modern turned treen items, one signed Peter Gell including yew wood items £30-50*           | 78  | A set of three brass fire irons with urn handles and matching fire dogs £40-60*                            |
| 60 | A 19th Century rosewood and pen work sewing box plus accessories (one missing handle) £30-50*       | 79  | A Burleigh ware Gretna Green jug, WWI Christmas brass tobacco tin plus other items £20-40*                 |
| 61 | A Victorian oak sewing box with recessed brass handles plus a wooden file box £40-60*               | 80  | A cut glass decanter, elephant engraved tankards plus other glass (two trays) £30-40*                      |
| 62 | A Chinese floral part tea set plus other china (two boxes) £20-30*                                  | 81  | A pair of Noritake pink ground landscape vases plus other china etc £20-30*                                |

**\*THIS LOT IS SUBJECT TO 17% COMMISSION PLUS VAT. PLEASE READ OUR TERMS AND CONDITIONS.**

- 82 Two four branch candelabra and a pair of Edwardian brass barley twist candlesticks £20-40\*
- 83 A rush framed mirror, pictures, Sony camcorder and accessories plus a clock £20-40\*
- 84 Various volumes of childrens classics etc £20-40\*
- 85 Items of glass to include four division decanter, 19th Century ice plates etc £20-40\*
- 86 A Wedgwood Willow pattern part dinner and tea set (two trays) £50-70\*
- 87 Various tea and coffee wares, posy ornaments etc (two trays) £20-40\*
- 88 Eleven various jack and block planes £30-40\*
- 89 Thirteen various moulding planes £30-50\*
- 90 Thirteen various moulding planes £30-50\*
- 91 Various bow saws plus a large auger £30-40\*
- 92 Thirteen various moulding planes £30-50\*
- 93 Ten various moulding planes in a variety of shapes £30-50\*
- 94 Woodworking tools to include keyhole saws, screwdrivers, gimlets etc £30-50\*
- 95 Four brass mounted keyhole saws plus seven Spokeshave £30-50\*
- 96 Seven various marking gauges including Marple, Stanley USA etc £30-40\*
- 97 Four brass mounted tri squares plus four bevel gauges £40-60\*
- 98 Five brass mounted marking gauges £50-80\*
- 99 A Rabone brass and steel spirit level plus two others £80-120\*
- 100 Four various swing braces £40-60\*
- 101 Two brass mounted swing braces £70-100\*
- 102 Two brass mounted swing braces, one by Marples, the other Glasgow maker £80-120\*
- 103 A brass mounted Norris No.14 coffin plane £150-200\*
- 104 A Sorby Norris type coffin plane £70-100\*



Lots 103 and 104

- 105 A Stanley Victor No.20 steel compass plane marked 2-7-93 £40-60\*
- 106 Two brass and steel plough planes, Marples and Griffiths Norwich £60-80\*
- 107 Two brass and steel plough planes, John Osborne Chatham & Griffiths Norwich £60-80\*
- 108 Two brass and steel plough planes, Marples Hibernia and Sorby £60-80\*
- 109 Two brass mounted moulding planes, one by Atkin & Sons £60-80\*
- 110 A Mathieson & Sons Glasgow plough, screw stemmed plane £80-120\*



- 111 A Mathieson & Sons Glasgow plough, screw stemmed plane £80-120\*



- 112 A Mathieson & Sons Glasgow plough, screw stemmed plane (unmarked) £80-120\*



- 113 A Sorrento box, watch etc £20-40\*
- 114 A carriage whip, African walking stick etc £30-40\*
- 115 A 19th Century copper coal helmet plus a singer sewing machine £20-40\*
- 116 A watercolour of a lady in Islamic frame plus other pictures £20-30\*
- 117 A set of eight volumes, Hammertons History of the World plus a set of Dickens works £20-30\*
- 118 Two marble table lamps, one gilt metal mounted, a cake stand, ice skates plus various singles £20-40\*
- 119 A Times Atlas of the World plus other volumes, natural history etc (two boxes) £20-40\*

- 120 Three various watercolours and a print  
£30-40\*
- 121 A vintage Underwood black typewriter,  
pine clerks writing slope plus an oak Lazy  
Susan £20-40\*
- 122 Various items of silver plated and other  
cutlery £20-30\*
- 123 An hors d'oeuvres dish, china and  
porcelain dolls £20-30\*
- 124 A Yamaha Batter 188 drum kit with  
Zildjian cymbals £150-200\*
- 125 A large selection of prints etc £20-40\*
- 126 A box of various silver plate and pewter  
£30-50\*
- 127 A box of mixed oils, watercolours and  
prints etc £20-40\*
- 128 A gilt wall mirror, woolwork fire screen  
plus various pictures and prints £30-40\*
- 129 Various china including Portmeirion,  
Carlton ware etc £20-40\*
- 130 A large quantity of costume jewellery  
£30-40\*
- 131 Various boxed and other cutlery and  
silver plate £30-40\*
- 132 Various volumes of modern firsts, Folio  
Society, literature etc (two boxes) £20-40\*
- 133 Queen Anne and Edwardian part tea and  
coffee sets £30-50\*
- 134 Various Japanese and other ceramics etc  
including boxed handkerchiefs £20-40\*
- 135 A large West German brown glazed vase  
containing shooting and alpine sticks, a  
music stand plus African paintings etc  
£20-40\*
- 136 Indian/SriLankan carved boxes plus two  
other wooden boxes £20-40\*
- 137 Various items to include 19th Century  
pewter inkwell, Indian folding table  
screen, pipes etc £20-40\*
- 138 A Zulu hide shield £30-50\*
- 139 An African tribal adze and axe with figural  
carving, one with copper binding  
(probably Congo) £50-80\*
- 140 A West African maternity figure with  
beads plus an East African tribal figure  
with beads £40-60\*
- 141 A pair of Indonesian polychrome painted  
seated figures plus a Chinese butter  
mould £20-40\*
- 142 A Trauts patent plough plane plus a  
Stanley plough plane £45-60\*
- 143 An American Oneida silver plated two  
handled tray plus a three piece tea set  
£20-40\*

- 144 A New Guinea figure with shell eyes plus  
four African tribal figures £50-80\*



- 145 Two African tribal headrests £50-80\*
- 146 Three Congo tribal wooden figures  
£50-80\*
- 147 A pair of black painted carved wooden  
figural panels plus an oak Gothic style  
chalice £20-40\*
- 148 A copper ice bucket with embossed floral  
decoration, brass shoe horn plus Lamson  
tube container £20-40\*
- 149 Various volumes of modern firsts  
(four boxes) £20-40\*
- 150 Various volumes of modern firsts  
(four boxes) £20-40\*
- 151 Various volumes to include children,  
sport and adventure etc (two boxes)  
£20-40\*
- 152 Items of china etc to include Wedgwood  
Babies plates, Wade jug etc £20-30\*
- 153 Charles Frank 8x42 binoculars, two  
Canon cine cameras plus accessories  
£20-40\*
- 154 Various volumes on natural history, travel  
etc (two boxes) £20-40\*
- 155 A heavy cut glass bowl, wall plaques plus  
other china £20-30\*
- 156 A Victorian Parian ware group plus other  
china and glass £20-40\*
- 157 A pair of Victorian brass horse doorstops  
£60-80\*



- 158 An oak Harrisons barometer plus a  
horseshoe shaped mirror £20-40\*
- 159 A Piquot tea set plus items of silver plate  
£40-60\*
- 160 An amber glass advertising jelly mould  
and sundries £20-40\*

**\*THIS LOT IS SUBJECT TO 17% COMMISSION PLUS VAT. PLEASE READ OUR TERMS AND CONDITIONS.**



- 161 Crown Devon musical hunting jug, various others, gin barrel, Victorian blue and white loving cup, Clarice Cliff bowl etc (two trays) £50-70\*
- 162 A Royal Doulton Slaters vase (as found), Victorian brass candlestick, steins and cutlery £20-40\*
- 163 A case of nautical items plus a glass vase in metal stand £20-30\*
- 164 A 19th Century Ridgways dish, Royal Doulton Old English coaching scenes plate plus other china £20-40\*
- 165 A 19th Century Imari vase plus a modern Chinese polychrome bowl £20-40\*
- 166 China to include faience bowl, Copeland, Wedgwood, Masons etc (two boxes) £20-40\*
- 167 An oak cased Griffin & Tatlock chemical balance plus an oak open bookshelf £30-50\*
- 168 Glassware to include Murano, Carnival, decanters, glass plus cut and coloured glass (two boxes) £20-40\*
- 169 China to include comport set, Victorian vases, green leaf plates, quimper bowl etc (three boxes) £30-40\*
- 170 An amethyst vase plus other china and glass (two boxes) £20-40\*
- 170AA Fender American vintage 1952 re-issue Telecaster Butterscotch Blonde with black scratch plate, maple one piece neck, Serial No.V1425457. In a red upholstered interior G&G 'The Original Vintage Case Co' case, comes with purchase receipt from Peaches Guitars in Colchester dated 25.05.16, plus other labels stickers etc £600-800\*



- 171 Tea and coffee wares plus other china £20-30\*
- 172 Various metal and wooden sundries £20-30\*
- 173 A bag of golf clubs, oil lamp plus silver plated casserole holder £30-50\*
- 174 Fabrics to include silk scarves, ermine, cushions etc plus Air India 1950's promotional prints £20-40\*
- 175 China to include three frog mugs, steins etc £20-40\*
- 176 A folding bed tray plus a brass pot stand £20-40\*
- 177 Various African and Chinese wooden carvings £20-40\*
- 178 19th Century wall plates plus other china and glass (two boxes) £20-40\*
- 179 A Persian green ground rug with multiple central medallions, 73" x 39" £40-60\*
- 180 An Afghan rug plus a yellow floral wood rug £30-50\*
- 181 A Persian red ground rug with multiple central medallions, 75" x 49" £40-60\*
- 182 A Chinese yellow and blue rug plus a Persian rug (as found) £20-30\*
- 183 A painted tin tray plus various metalware £20-40\*
- 184 Inlaid wooden boxes plus other wooden sundries £20-30\*
- 185 A Lipscombe stoneware water filter (as found) plus china and linen etc (two boxes) £20-40\*
- 186 A Japanese carved wood and Shibayama mother of pearl, ivory and lacquer hanging cabinet (some losses to decoration) £50-70\*
- 187 A Garrett Freedom metal detector £30-40\*
- 188 A bag of vintage golf clubs including some hickory shafts £20-40\*
- 189 A brass rail fender £30-50\*
- 190 A brass extending fender, fire irons and dogs £30-40\*
- 191 Arthur De Tivoli, oil on board of a Beccles view plus other watercolours including Colin.F.Greener £30-40\*
- 192 A John Murdoch & Co London 'Maidstone' cased violin and bow £30-50\*
- 193 A boxed limited edition Royal Doulton black bust of Churchill Centenary 1874-1974, height 10" £150-200\*



- 194 A reproduction gilt mounted wall clock £20-40\*
- 195 An oil lamp, brassware and cutlery etc £20-40\*
- 196 Various boxed and other silver plated cutlery £30-40\*

**\*THIS LOT IS SUBJECT TO 17% COMMISSION PLUS VAT. PLEASE READ OUR TERMS AND CONDITIONS.**



- 197 A silver plated four piece tea set £30-50\*
- 198 A silver plated shell edged salver on claw and ball feet plus a silver plated meat cover £30-40\*
- 199 A case of sundries including cigar case and cigars, cased snuff scales etc £20-40\*
- 200 A boxed H.M.Stanley retailed top hat £20-40\*
- 201 Various whistles in treen, horn, metal etc £40-60\*
- 202 A carved bone handled magnifying glass, penknives etc £20-40\*
- 203 Various bead necklaces and costume jewellery including a 9ct gold ring (as found) £30-50\*
- 204 A silver top cut glass scent bottle £30-40\*



- 205 A pink overlaid floral glass jar and stopper £30-40\*
- 206 An 18th Century Chinese Famille Rose tea bowl and saucer plus two bowls (two pieces as found) £30-40\*
- 207 A pair of silver sauce boats, Sheffield 1913, with inscription £70-90\*
- 208 A silver sugar shaker, Birmingham 1908 plus a trophy cup, with inscription £30-40\*
- 209 A Walker Hall silver teapot, Sheffield 1910 £150-170\*



- 210 A silver sugar shaker, Mappin & Webb, Birmingham 1913 £40-60\*
- 211 An embossed silver cream jug and sucrier, Birmingham 1901 (as found) £60-70\*
- 212 A silver cigarette case with foliate decoration and a pair of silver spill vases (dented) £40-60\*
- 213 A pair of 18th Century seamed brass candlesticks with knopped cylindrical stems and square bases, 9" high £50-70\*

- 214 Various items of costume jewellery, lighters, compacts etc £30-40\*
- 215 An Etling opal glass figure of Christ (chipped fingers) plus an Art Glass claret jug £100-150\*
- 216 A Chinese giltwood figure of an Emperor plus jade, agate and soapstone carved items £50-80\*
- 217 A quantity of GB silver coinage and other coins including a five francs 1843 coin and Ling & Co Osborne House Lowestoft token £50-70\*
- 218 A quantity of GB silver coinage including 1889 crown £40-60\*
- 219 Two pairs of silver cuff links plus a Crown Devon Rouge Royal jar etc £30-50\*
- 220 A silver cigarette box, toilet jars etc £30-50\*
- 221 Cased silver handled tea knives and two silver christening sets £40-60\*
- 222 A cased silver ten piece cruet set £100-150\*



- 223 A pair of small silver models of pheasants by C.J.Vander, hallmark for Sheffield 2001, approx 11 troy oz, larger one approx 6" x 3", smaller one approx 5" x 3" £100-150\*



- 224 A pair of silver peppers with foliate details hallmark, Birmingham 1900 £30-50\*
- 225 A modern silver candlestick in the form of a ducks head £50-70\*
- 226 A Georgian silver gilt condiments dish, London (date letter rubbed) (repaired) £30-50\*
- 227 A silver sugar sifter, one silver topped silver and glass sugar sifter plus other silver wares £30-50\*
- 228 A pair of small silver urns, stamped Sterling £30-40\*

**\*THIS LOT IS SUBJECT TO 17% COMMISSION PLUS VAT. PLEASE READ OUR TERMS AND CONDITIONS.**

- 229 A silver condiment set, Birmingham 1939/40 £30-50\*
- 230 A pair of small silver pin trays, stamped Sterling plus a pierced dish (as found) £45-60\*
- 231 A silver bon bon dish (filled) Birmingham 1931, silver cigarette case, silver Golfer of the Year plaque, silver pill box (filled) etc £30-50\*
- 232 Two silver and white metal overlaid scent bottles (no stoppers) plus one white metal overlaid vase (all have cracks or chips in glass) £20-30\*
- 233 A Chinese white metal dragon decorated circular box plus two others, one of handbag form £30-50\*
- 234 A set of six silver goblets with grape and vine decoration to stem, gilt interiors, Sheffield 1978 and Birmingham 1978 £250-350\*
- 235 A set of six silver flutes with gilt interiors, vine and grape decoration to stems, Birmingham 1976 £200-300\*



Lots 234 and 235

- 236 Various small sundries including Meerschaum pipe, Swan and Mable Todd fountain pens, lighters etc £30-50\*
- 237 A boxed set of six modern silver place settings in the form of pheasants, Birmingham 1998 £80-120\*



- 238 A silver and glass butter dish with cow finial, engraved decoration to silver and engraved monogram to lid, hallmark London 1873, Richards & Brown makers mark £100-150\*



- 239 A silver sifter with floral decoration, London 1896 (as found) £60-80\*
- 240 A silver stirrup cup in the form of a horse's head with gilt interior by C.J.Vander, hallmarks for Sheffield 2003, approx 5" tall £100-150\*



- 241 A pair of silver models of pheasants by C.J.Vander, hallmarks for Sheffield 1997, approx 35 troy oz, approx 8 1/2" long £300-500\*



- 242 A silver model of a stag by C.J.Vander, hallmarks for Sheffield 2003, approx 50 troy oz, height approx 11", length approx 8 1/2" £800-1200\*



- 243 A pierced silver bowl, London 1924 (missing liner, as found) £150-180\*



**\*THIS LOT IS SUBJECT TO 17% COMMISSION PLUS VAT. PLEASE READ OUR TERMS AND CONDITIONS.**

- 244 An embossed silver cake stand, London 1905 (as found) £200-250\*



- 245 A Royal Doulton white turkey D6889 No.284, signed by Royal Doulton family member £50-70\*
- 246 A Royal Doulton black turkey D7149 No.1356/3000 £40-60\*
- 247 Royal Doulton figurines, Sunday Morning HN 2184, Grace HN 2318, Adrienne HN 2304 £30-50\*
- 248 Royal Doulton figurines, HN 2791, Lydia HN 1908 and Coralie HN 2307 £30-50\*
- 249 Small animal ornaments including Samson, Whimsies etc £30-50\*
- 250 A silver photo frame, electric shock machine plus sundries £30-50\*
- 251 A quantity of costume jewellery including necklaces, earrings etc £20-40\*
- 252 Boxed pendants, watches plus other items £30-40\*
- 253 A large quantity of costume jewellery including beads, pendants, earrings etc £30-50\*
- 254 A miniature painting on ivory of Miss Eliza Inverarity c.1830 with card stating it was painted by William Booth together with a tinted photograph of her husband Charles Martyn £200-250\*



- 255 A pair of Indian reverse painted portraits £50-80\*
- 256 An early map of Westminster and The Thames, marked Norden 1593, 7" x 10" £70-100\*
- 257 Eight silver gilt dressing table items, all initialled, different makers £70-90\*
- 258 Various costume jewellery, silver pencil and badges etc £30-50\*
- 259 A cased set of six silver coffee spoons plus other silver cutlery £70-90\*

- 260 Various items of silver jewellery including rings, ingot pendant etc plus costume jewellery £40-60\*
- 261 A jet type cameo brooch, two seals plus other items £30-50\*
- 262 Twelve silver chains including one with pearl pendant, all chains are various styles and lengths £40-60\*
- 263 A group of five silver stone set rings including citrine, quartz and topaz etc £30-50\*
- 264 A group of five silver stone set rings including diamond, citron and pink sapphire etc £30-50\*
- 265 A group of five silver stone set rings including quartz, pearl and kyanite etc £30-50\*
- 266 A group of five silver stone set rings including tanzanite and diamond, amethyst, citrine etc £30-50\*
- 267 Seven pairs of silver drop earrings, some stone set including spinel, moonstone, topaz, amethyst etc £40-60\*
- 268 Seven various stone set silver pendants including topaz, diamond, quartz etc £30-50\*
- 269 Seven various silver stone set pendants including yellow diamond, garnet, blue topaz etc £30-50\*
- 270 A group of five silver stone set rings including labradorite and citrine etc £30-50\*
- 271 A group of five silver stone set rings including citrine, topaz, spinel etc £30-50\*
- 272 Seven pairs of silver stud earrings, some set with stones including garnet, spinel, amethyst etc £40-60\*
- 273 Six silver stone set rings including emerald, peridot, pearl, amethyst etc £40-60\*
- 274 Three silver jewellery sets comprising of rings, earrings, necklaces with a matching silver ring and pendant £30-50\*
- 275 Six silver stone set rings including garnet, spinel, topaz etc £40-60\*
- 276 A gents 9ct gold cased International Watch Company wristwatch £300-400\*



**\*THIS LOT IS SUBJECT TO 17% COMMISSION PLUS VAT. PLEASE READ OUR TERMS AND CONDITIONS.**



- 277 A selection of silver jewellery including  
scent bottle pendants £40-60\*
- 278 A yellow metal pearl, emerald and  
amethyst brooch £50-70\*
- 279 An 18ct gold pearl, emerald and  
amethyst ring, size M £80-120\*
- 280 A 9ct gold pearl and garnet set ring,  
size X £50-70\*
- 281 An 18ct gold ruby and diamond ring,  
size M £150-180\*
- 282 An 18ct gold opal and diamond ring  
marked MB Co (damage to opal) £75-90\*
- 283 A 9ct gold garnet and diamond half hoop  
ring, 1924, size L £35-50\*
- 283A An 18ct gold diamond cluster ring, size J  
£400-600\*



- 284 Two heavy silver bracelets £40-60\*
- 285 A 9ct gold St Christopher pendant on  
yellow metal chain £80-120\*
- 286 A 9ct gold brooch set with citrine heart  
shaped stone together with a yellow  
metal memorial brooch with a flower  
design set with seed pearls £40-60\*
- 287 A 15ct gold blue and white sapphire five  
stone ring £150-250\*



- 288 Two 9ct gold rings, amethyst, CZ and  
onyx £30-50\*
- 289 An 18ct gold opal and diamond ring,  
size J £200-250\*
- 290 A 9ct gold diamond and sapphire cluster  
ring, size O £35-45\*
- 291 A 9ct gold citrine ring (cut) plus a yellow  
metal two stone crossover ring £70-90\*
- 292 An 18ct white gold baguette diamond  
ring, approx 1ct, size T £300-350\*



- 293 A white metal fourteen stone diamond  
and ruby 3/4 hoop ring, size Q £350-400\*
- 294 A 9ct gold full eternity ring, size T £40-60\*
- 295 A pair of 9ct gold cuff links of oval form  
£80-120\*
- 296 Two silver fob watches plus two pocket  
watches £45-60\*
- 297 Two silver fusee pocket watches £40-60\*
- 298 Two silver pocket watches plus three fob  
watches £45-60\*
- 299 Two silver pocket watches plus a double  
Albert £35-50\*
- 300 A gents silver cased pocket watch, chain  
and two Alberts, Kays Perfection Lever  
£40-60\*
- 301 A pair of 9ct gold engine turned cufflinks  
£30-50\*
- 302 WWI medal to 705518 Pte W.F.Carter  
23rd London Regt £20-30\*
- 303 A 9ct gold ring plus a pearl set bar  
brooch £20-40\*
- 304 A gents 9ct gold Accurist wristwatch  
£50-70\*
- 305 A ladys 9ct gold wristwatch (no strap)  
£20-40\*
- 306 A gents 9ct gold Benson wristwatch  
£50-70\*
- 307 A silver watch chain with clip and t-bar  
with an Ingersoll pocket watch £70-90\*
- 308 A 19th Century brass and steel fleem,  
pocket microscope, letter clip and a  
corkscrew £30-40\*
- 309 A vintage Oris wristwatch £30-50\*
- 310 A modern silver mounted cranberry glass  
claret jug, hallmarked for Sheffield  
(lid as found) £100-200\*



- 311 A modern Italian bronze of David,  
height 10" £60-100\*
- 312 An Ushabti of a Pharaoh with crossed  
arms plus a pottery bowl £30-50\*
- 313 A Richard & Co French brass cased  
carriage clock with key £60-100\*

**\*THIS LOT IS SUBJECT TO 17% COMMISSION PLUS VAT. PLEASE READ OUR TERMS AND CONDITIONS.**



- 314 A silver model of a fox by C.J.Vander, hallmarks for London 1993, approx 44 troy oz, length approx 13", height approx 4 1/2" £700-900\*



- 315 A silver stirrup cup in the form of a stags head with gilt interior by C.J.Vander, hallmark for Sheffield 2003, approx 6" tall £100-150\*



- 316 A 19th Century bronze of a rough coated dog, length 4" (defective base) £30-50\*

- 317 A Mappin & Webb tortoiseshell and silver gilt demi lune box on ornate legs with claw and ball feet, London 1913 (small damage to one panel) £200-300\*



- 318 A gents Jaquet-Droz 25 Jewels Automatic wristwatch in a case £50-70\*

- 319 A 9ct gold tri colour bracelet £80-120\*

- 320 A selection of silver and white metal jewellery including enamelled butterfly pendant, dragonfly brooch, rings etc £40-60\*

- 321 A pair of 18ct gold and diamond hoop earrings £100-150\*

- 322 A sterling silver sail ship on glass base plus costume jewellery £20-40\*

- 323 A selection of amber including bracelet, necklace and three pair of earrings £40-60\*

- 324 A 9ct rose gold bracelet £80-120\*

- 325 A 1914 half sovereign in 9ct gold mount on 9ct gold chain £120-180\*

- 326 A rose gold 9ct chain with 9ct gold heart shaped padlock clasp £80-120\*

- 327 A selection of 9ct gold, silver and costume jewellery (all as found) £60-80\*

- 328 A matching silver and amber necklace and earrings plus a pair of amber earrings and a bead necklace £30-50\*

- 329 A selection of 9ct gold and yellow metal earrings, some odds (some as found) £50-70\*

- 330 A gold necklace (possibly 18ct) £300-400\*

- 331 A 9ct gold band ring set with red and white stones, size O £40-60\*

- 332 An Italian 18ct gold and diamond pair of earrings and matching necklace £180-250\*

- 333 A silver brooch in the form of a boat and a white metal cuff set with large green stones, stamped 800 £30-50\*

- 334 An 18ct gold diamond solitaire ring, size O £60-80\*

- 335 Two silver compacts (one Siamese) £20-30\*

- 336 A silver spoon and fork with jade handles £30-50\*

- 337 A white metal mouse vesta case, stamped 925 £40-60\*



- 338 A Mappin & Webb tortoiseshell silver gilt dome top box, Chester 1913 £150-250\*



- 339 A Mappin & Webb tortoiseshell domed silver gilt box, Birmingham 1913 £200-300\*



- 340 A silver toast rack, cruet plus a pair of small baskets £50-70\*
- 341 A case containing various pocket watches (five silver cased) £50-70\*
- 342 Various items of silver cutlery etc £50-70\*
- 343 A cased set of twelve silver teaspoons and tongs £60-80\*
- 344 A pair of Victorian silver salts plus other silver and white metal items £50-70\*
- 345 A brass carriage clock marked R & Co Made in Paris £40-60\*
- 346 A Mappin & Webb walnut cased bracket clock £50-80\*
- 347 A pair of silver candlesticks (marks rubbed) £40-60\*
- 348 A Chinese circular white metal box with bird, floral and dragon decoration, signed Wang Hing £60-80\*



- 349 Two cases of six and twelve silver coffee spoons £50-70\*
- 350 Various GB and foreign coins £20-40\*
- 351 A selection of silver spoons plus napkin rings £60-80\*
- 352 Two cased sets of six silver coffee spoons £30-50\*
- 353 A pair of cloisonne on porcelain floral cups plus a small folding screen £30-40\*
- 354 A signed and inscribed photo of Amy Johnson in flight attire plus two other items £40-60\*
- 355 Two plated fob and ring watches plus a box of various watches, postcards and other items £30-50\*
- 356 A silver brush and mirror, ring tree plus other silver items £40-60\*
- 357 Seven various wooden and resin netsukes £40-60\*
- 358 Various watches and radio labels £30-50\*
- 359 Various Oriental items including green stone carvings, enamel boxes, soapstone etc £40-60\*
- 360 A brass carriage clock, dial marked Widdup, Worcester £50-80\*
- 361 Various bone items including a Chinese acrobat model £40-60\*

- 362 A white metal bracelet and pendant, stamped 925 £20-40\*
- 363 A Rhona Sutton silver charm bracelet £30-50\*
- 364 Various brass animals plus a small bust £20-40\*
- 365 A pair of Chinese brass kylins £20-30\*
- 366 Various beads and costume jewellery £60-80\*
- 367 A case of six silver enamelled coffee spoons plus other cutlery (as found) £30-50\*
- 368 A pair of Chinese brass kylins £30-50\*



- 369 Various items of costume jewellery £20-40\*
- 370 A 9ct gold wishbone ring plus a quantity of yellow metal clasps, some stamped 9ct (most as found) £30-50\*
- 371 A pierced silver bon bon dish, London 1915 £40-50\*
- 372 Two Georgian silver serving spoons £60-80\*
- 373 No Lot
- 374 A pair of 9ct gold earrings plus a bar brooch £30-50\*
- 375 A machine made floral Persian pattern carpet £20-30\*
- 376 An Arts and Crafts embossed brass jardinière on three lion decorated legs, a larger embossed copper jardinière plus a 19th Century seamed copper kettle £40-60\*
- 377 A 19th Century one gallon copper harvest measure plus a 19th Century seamed copper kettle £40-60\*
- 378 A pair of 19th Century French foliate decorated bronze andirons, 11 3/4" high £40-60\*
- 379 An Arts and Crafts brass jug of tapering cylindrical form with flared base and wooden handle, 11 1/2" high £40-60\*
- 380 A large West African tribal maternity figure, height 45" £50-80\*
- 381 A large selection of Sylvac plus two Nat West pigs (two trays) £30-50\*
- 382 A cut glass cake stand plus other china and glass (two boxes) £20-40\*

**\*THIS LOT IS SUBJECT TO 17% COMMISSION PLUS VAT. PLEASE READ OUR TERMS AND CONDITIONS.**

- 383 A large quantity of African and European carvings £20-40\*
- 384 Various fabrics including lace, beadwork, lace bobbins etc £20-40\*
- 385 A set of five overlaid glass hock glasses, decanter plus other glassware £30-50\*
- 386 A set of three brass fire irons plus a steel poker £20-40\*
- 387 A pair of 19th Century brass and steel andirons with large balls and female torso decoration £50-70\*
- 388 A Georgian brass and steel footman £40-60\*
- 389 Various wooden and metal sundries including a trug, candlesticks, egg stand etc £20-40\*
- 390 A brass cased mantel clock with winged cherub, leaf and urn decoration and enamel numerals £200-300\*



- 391 A quantity of various shoe trees £60-80\*
- 392 A phonograph with brass horn in octagonal ebonised case £150-200\*



- 393 Six cases of lawn bowls £30-50\*
- 394 A 19th Century walking cane with ivory dogs head grip, glass eyes and silver band (cracked) £80-120\*



- 395 A silver mounted walking cane plus two others, one with horn handle £30-40\*

- 396 A silver and bone mounted whistling walking cane £50-70\*
- 397 A brass hand bell with ebony grip plus brass and silver plate £40-60\*
- 398 An early 19th Century blue and white chinoiserie meat plate £30-50\*
- 399 A silk and lace embroidered mat, cutlery etc including one silver and two silver banded serviette rings £30-40\*
- 400 A Celadon glazed lidded jar with dragon finial £30-50\*



- 401 Six 19th Century cow creamers (three as found) £30-50\*
- 402 A Bing & Grondahl lake and tree vase, No.322/243, height 10" £40-60\*
- 403 A pair of Chinese floral cloisonné vases, height 10" £40-60\*
- 404 Two Chinese hardwood carvings of Sages and Artisans plus three African beaded hooves £30-50\*
- 405 Two 19th Century Cantonese bird and floral plates £50-70\*
- 406 An Indian brass Deity, a seated Buddha, a Japanese brass vase plus a wooden straining vessel with horse head handle £40-60\*
- 407 A pair of 19th Century French bisque figurines (one detached arm) £20-30\*
- 408 A Royal Doulton stoneware blue ground floral vase £20-40\*
- 409 A 19th Century Japanese bronze charger with silver figural and crane inlays plus a pair of Japanese inlaid vases £50-80\*
- 410 A pair of Graff porcelain lily decorated bowls £20-30\*
- 411 A pair of 19th Century treacle glazed boot flasks, pot lid and other china £20-40\*
- 412 A copper ashtray inset with Georgian cartwheel penny, Kodak folding camera etc £20-40\*
- 413 A brass three draw telescope £40-50\*
- 414 An early 20th Century brass doorstop depicting Queen Alexandra on horse back with Reg No, 8 3/4" high £30-50\*
- 415 A brass cased four glass striking mantel clock with mercury pendulum £150-200\*

**\*THIS LOT IS SUBJECT TO 17% COMMISSION PLUS VAT. PLEASE READ OUR TERMS AND CONDITIONS.**



- 416 A Royal Doulton green glazed vase with relief face decoration plus a boy and rabbit group £30-40\*
- 417 Two Chinese hardwood carvings of Sages and Artisans £30-50\*
- 418 A Regency twin compartment inlaid partridge wood tea caddy with later bracket feet £30-50\*
- 419 Various watches, hip flask plus other items £20-40\*
- 420 A set of three Masons Ironstone china jugs £30-40\*
- 421 Royal Doulton plates, 'The Mayor' and 'The Parson' £20-30\*
- 422 An Islamic inlaid metal vase and tankard, Indian white metal bowl plus other items £30-50\*
- 423 A Crown Derby Japan pattern cup and saucer, a Minton cup and saucer plus three pieces of cranberry glass £40-60\*
- 424 A blue glass witches ball, dia 8" £30-50\*
- 425 A pair of late 18th Century Adam style brass candlesticks on stepped square bases, 9 3/4" high £30-50\*
- 426 A pair of Maple & Co silver plated Campana urns plus a silver plated toast rack £30-50\*
- 427 Three South American pottery figures £30-50\*
- 428 Carl Zeiss Jena 8x30 monocular and 8x30 binoculars £20-40\*
- 429 Various horse brasses, shoe ornaments, cutlery etc (two boxes) £30-50\*
- 430 A Delft style pottery wall clock £20-40\*
- 431 Mrs Ferguson Blair, one volume The Henwife, Jack 1861, chromolithographic illustrations £30-50\*
- 432 W.E.Jones, Biggles Flies South, O.U.P. 1938 £20-30\*
- 433 One volume, Phil Mays Guttersnipes No.1008/1500, Leadenham Press plus three other volumes £20-30\*
- 434 A boxed Airfix Super Giro plus board and card games £20-40\*
- 435 A brass students lamp with green shade £30-40\*
- 436 A Japanese bronze censor with bi metal carp and other decoration £60-80\*
- 437 Regency and Adderley rose decorated part tea and coffee sets plus other china £20-40\*
- 438 A Victorian brass kettle with embossed leaf decoration plus two copper kettles £40-60\*
- 439 A silver plated three piece tea set, four bottle cruet plus other silver plate £30-50\*
- 440 An inlaid walnut tray, decoy duck, kitchen scales plus other items including four clay figures £20-40\*
- 441 A copper porch lantern £30-50\*
- 442 An Edwardian mahogany and brass inlaid dome top striking mantel clock £85-100\*



- 443 A Viners silver plated four piece tea set, four bottle cruet etc £30-50\*
- 444 Various china and glass including Devon motto ware £20-30\*
- 445 A Wedgwood terracotta plate painted with a kingfisher and a Poole floral plate £20-30\*
- 446 Three pairs of binoculars, Hanimex 8x30, Kershaw and Sthenara £20-30\*
- 447 Various toy tractors £20-30\*
- 448 A Sitzendorf shell and floral vase plus other china £30-40\*
- 449 A mahogany and brass extending bookrack £30-40\*
- 450 Twenty one various Gt Yarmouth pottery tankards, some with certificates £70-90\*
- 451 A Hughes & Co Paladin green decorated part tea set £20-40\*
- 452 No Lot
- 453 A painted copper weather vane £40-60\*
- 454 An oak cased aneroid barometer with barley twist columns, an electric shock machine plus two pieces of china £30-50\*
- 455 An African oil on canvas of a mountain and river scene with figures, signed M.D.Harisi, 35" x 47" £20-30\*
- 456 An extensive Royal Doulton Cambridge dinner, tea and coffee set (three boxes) £50-80\*
- 457 A Victorian spelter urn, companion set plus brass, metal and wooden sundries £20-40\*
- 458 A Syrian mother of pearl and metal inlaid folding chair £50-80\*
- 459 A black Bakelite telephone, Roberts radio plus an oak book stand £20-40\*
- 460 A Fijian shell hanging light shade £20-40\*

**\*THIS LOT IS SUBJECT TO 17% COMMISSION PLUS VAT. PLEASE READ OUR TERMS AND CONDITIONS.**



- 461 A vintage leather suitcase £20-30\*
- 462 A woodwork house, floral and landscape sampler by Jemma Newman aged 10 years 1862, 17" x 15" £50-70\*
- 463 Four 19th Century maps of Suffolk and East Riding of Yorkshire and Hertfordshire £30-50\*
- 464 Various postcards, tea and view cards plus newspapers and scrapbooks £20-30\*
- 465 A mahogany and brass mounted coal box plus a brass mesh folding fire guard £30-50\*
- 466 A Hartmann tweed and tan leather suitcase £40-60\*
- 467 Ballantine, oil on canvas on a country scene, 1882, 15" x 19" £30-50\*
- 468 An oil on board of a Korean scene, signed plus an oil of Venice signed P.Johnson 64 £20-40\*
- 469 Three Victorian opal glass vases (two as found) plus other china etc £20-40\*
- 470 A Goebel limited edition Gustav Klimt wall plate £20-40\*
- 471 A Morley green and orange floral dinner set £20-30\*
- 472 A silver mounted walking cane £30-40\*
- 473 An Indian bird and floral carved box plus a straw filled bear £20-40\*
- 474 A Paragon green and floral part tea set £40-60\*
- 475 A Royal Albert Brigadoon part dinner and tea set (three trays) £80-120\*
- 476 Various leaded and other glass lamp shades and vases £20-40\*
- 477 Various volumes on childrens subjects (two boxes) £20-40\*
- 478 Various volumes on railways (two boxes) £30-50\*
- 479 Three boxes of china and glass, Portmeirion, Royal Doulton etc £20-40\*
- 480 A Minton floral jardinière plus other china (two boxes) £20-40\*
- 481 A dressmakers dummy, shooting stick, chamber pot etc £20-40\*
- 482 Various silver plate, cutlery etc £40-60\*
- 483 Various volumes on golf £20-40\*
- 484 A flute, various silver plate, copper and brass etc £20-40\*
- 485 A cut glass decanter plus cut and coloured glass £20-30\*
- 486 Various volumes on miscellaneous subjects including Folio Society, Grimms Fairy Tales £20-30\*
- 487 Various volumes of miscellaneous including ordnance survey maps and picture cover sheet music (two boxes) £20-40\*
- 488 Various volumes on model railways including Hornby Dublo 1938-64 plus a slate railway themed clock £20-40\*
- 489 Various volumes on natural history £20-30\*
- 490 Various volumes on art etc including W.S.Gilbert, The Gondoliers, illustrated Russell Flint £20-40\*
- 491 Various volumes on fly fishing, tying, dressing etc, a comprehensive collection (two boxes) £70-100\*
- 492 Various volumes on salmon, trout and other angling subjects (three boxes) £50-80\*
- 493 A watercolour, design for cradle cover embroidered upon linen 20" x 11", Roger Descoutter print of the needles plus an oil portrait of a lady £30-50\*
- 494 An Edward Pearce watercolour titled 'Autumn Leaves', signed lower right, 14" x 20" £20-30\*
- 495 Various watercolours and oils £20-40\*
- 496 Marion Broom, watercolour of a bowl of flowers in maple frame, 20" x 28" £70-100\*
- 497 An oil on board of a church and country lane, an oak wall mirror plus a fire screen £30-40\*
- 498 E.R.Smythe (1810-1899), oil on canvas of a chestnut mare, 9" x 13" £300-400\*



- 499 E.R.Smythe (1810-1899), oil on canvas of a beach encampment with figures and horse, signed bottom right, 11" x 17" £200-300\*



- 500 A Malaysian wooden puppet £20-40\*

**\*THIS LOT IS SUBJECT TO 17% COMMISSION PLUS VAT. PLEASE READ OUR TERMS AND CONDITIONS.**

## FURNITURE AND COURTYARD

Lots 1001 – 1193

ALL MEASUREMENTS ARE APPROXIMATE

**AFTER 5 WORKING DAYS, STORAGE CHARGES OF £2 + VAT PER LOT / PER DAY WILL APPLY TO ANY FURNITURE THAT HAS NOT BEEN COLLECTED**

- 501 A floral wool carpet £20-30\*
- 502 Various Chinese and Japanese ceramics including Yixing teapot and vases etc £30-40\*
- 503 Two boxes of cut glass and silver plate etc £20-30\*
- 504 An Anglo Indian bone inlaid porcupine writing slope £100-150\*



- 505 An Indian brass jardinière, Russian carved wooden bread plate, brass plumb bob plus a miniature flask in brass container £30-40\*
- 506 Various silver plated cutlery, cruet, horse lighter plus Victorian brass candlesticks £20-40\*
- 507 T.J.Soper, watercolour of a lock scene plus other mainly 19th Century watercolours £30-50\*
- 508 A French gilt metal figural mantel clock plus a dome clock £30-40\*
- 509 A heavy 19th Century brass fender, the solid front having pierced 'Home Sweet Home' top with tubular rail above, 46" wide £100-150\*



- 510 An iron hanging light fitment, carriage lamps plus other items £20-30\*
- 511 A heavy cut glass bowl, vase and decanters etc £20-30\*
- 512 An Afghan carpet, 114" x 74" £70-100\*
- 513 A Chinese floral carpet, 125" x 96" £30-50\*
- 514 A basket containing Victorian blue and white part dinner set plus a Celadon table lamp £30-40\*
- 515 Various Portmeirion china, birds of britain, summer strawberries, botanic garden plus a Pomona jug and bowl £30-50\*
- 516 Various Masons china including ginger jars, clock, comport etc plus a Wedgwood Sarahs Garden vase £30-40\*
- 517 A boxed white glazed pottery figure of Jennie Herring, No.108/150 £20-40\*
- 518 A dressmakers mannequin £20-40\*

- 1001 A 19th Century oak joint stool £50-70\*
- 1002 A mahogany glazed two door wall hanging cabinet £30-50\*
- 1003 A nest of medium colour Ercol tables £40-60\*
- 1004 A 1970's G-Plan sideboard with four drawers and three doors £50-80\*
- 1005 A 19th Central black lacquer and Chinoiserie panel £120-150\*
- 1006 A Victorian flame mahogany two door wardrobe over two short and two long drawers £150-200\*
- 1007 An oak triple single mirror door wardrobe £70-100\*
- 1008 A Victorian inlaid walnut Davenport with brass gallery and four drawers £120-180\*



- 1009 A mahogany and cross banded shape front bureau on cabriole legs £30-50\*
- 1010 A Jacobean style oak three long drawer chest on barley twist supports £70-100\*



- 1011 A carved mahogany single drawer wall hanging bracket £20-40\*

**\*THIS LOT IS SUBJECT TO 17% COMMISSION PLUS VAT. PLEASE READ OUR TERMS AND CONDITIONS.**

- 1012 An oak shelf back dresser with three drawers and doors below £100-150\*
- 1013 A Victorian red upholstered button back armchair £50-70\*
- 1014 A five tiered Globe-Wernicke Co Ltd bookcase (one pain cracked) £100-150\*
- 1015 An 18th Century oak three panel coffer £80-120\*
- 1016 A 19th Century shelf back dresser with three drawers, single cupboard and pot board (later added back) £150-200\*
- 1017 An Edwardian carved mahogany piano stool with upholstered top £20-40\*
- 1018 A circular copper topped table on lion claw feet £30-50\*
- 1019 A Georgian elm dough bin converted with single fronted door £70-100\*
- 1020 A mahogany astragal glazed two door bookcase on cabriole legs with claw and ball feet £100-150\*
- 1021 A mahogany four shelf bookcase £30-50\*
- 1022 A reproduction three tier bookcase plus two standard lamps £20-30\*
- 1023 A Victorian mahogany three tier dumbwaiter £50-70\*
- 1024 A light oak shelf back dresser with two glazed doors over single drawer, two cupboards and central well £120-150\*
- 1025 An Edwardian satin wood white marble topped wash stand with red Art Nouveau floral tiled back £40-50\*
- 1026 A Victorian pine chest of two short over three long drawers £60-80\*
- 1027 An African zebra skin drum £30-40\*
- 1028 A Victorian mahogany open three tier bookcase £30-50\*
- 1029 A Victorian mahogany chest of two over three drawers £60-70\*
- 1030 A 19th Century mahogany chest of three graduated drawers £50-80\*
- 1031 An 18th Century oak panelled coffer with later carving £200-250\*



- 1032 A Victorian mahogany hall chair plus a lady's revolving tub chair £30-50\*

- 1033 An oak open four tier bookcase £20-30\*
- 1034 A reproduction walnut and cross banded bow front single drawer side table on cabriole legs £40-60\*
- 1035 A bamboo three tier bookcase with rattan sides and shelves £30-50\*
- 1036 A mahogany two over one drawer dressing table £20-30\*
- 1037 An Edwardian mahogany two over two drawers dressing table £20-30\*
- 1038 A large Victorian mahogany six drawer dressing table with mirror back £20-40\*
- 1039 A Victorian carved mahogany single mirror door triple wardrobe on two drawer base £120-180\*
- 1040 Eight various chairs including Bergere chairs £20-40\*
- 1041 A modern oak shelf back dresser £50-70\*
- 1042 A childs rush seat chair with rabbit decorated inlaid back, oak chest of drawers, stool etc £20-40\*
- 1043 An 18th Century oak mule chest with carved panel fronts over two drawers £200-300\*



- 1044 A mahogany stationery rack, dining chair, tea trolley and a mirror £20-30\*
- 1045 An oak single drawer chest £20-30\*
- 1046 A pine double bed frame with supports £30-50\*
- 1047 A modern cane three piece conservatory suite £20-40\*
- 1048 An oak two door cupboard and a modern cabinet £10-20\*
- 1049 An upholstered armchair £10-20\*
- 1050 A carved Art Nouveau mahogany sideboard with two drawers and doors £30-50\*
- 1051 A mahogany single door medicine cabinet plus an oak piano stool £30-40\*
- 1052 A mahogany sideboard with two central drawers flanked by cupboards on cabriole legs £30-50\*

**\*THIS LOT IS SUBJECT TO 17% COMMISSION PLUS VAT. PLEASE READ OUR TERMS AND CONDITIONS.**



- 1053 A rustic light wood stool two book racks plus a circular mahogany table £30-40\*
- 1054 An elm seat stick back chair plus two others £20-30\*
- 1055 A modern three seater settee £20-40\*
- 1056 A Victorian button back Chesterfield £30-40\*
- 1057 A modern brown three seater sofa £20-40\*
- 1058 A Victorian button back Chesterfield with brown tweed upholstery £50-70\*
- 1059 A Victorian mahogany knee hole dressing table £50-70\*
- 1060 A modern light oak sideboard, TV stand plus a two shelf bookcase £40-60\*
- 1061 A Georgian mahogany Chippendale style elbow chair, a Victorian carved mahogany lady's chair plus a yellow formica table £40-60\*
- 1062 An oak glazed corner cabinet plus one other oak floor standing corner cupboard £30-50\*
- 1063 A Jacobean carved oak elbow chair with later replacement seat £60-100\*
- 1064 A 19th Century oak eight day long case clock with painted arched dial, by Robert King of Loddon £300-500\*
- 1068 A 19th Century oak long case clock with 30 hours, brass dial movement, by William Guest of Windsor (sold as seen) £60-80\*
- 1069 A tapestry upholstered low chair plus a Victorian carved mahogany chair £40-60\*
- 1070 A Victorian stained pine blanket chest inscribed 'Pay Office 2/3 Mon Batt, 2/4 Welsh Rea' £30-40\*
- 1071 An oak three drawer dressing table plus an upholstered arm chair £10-20\*
- 1072 A pine dresser back £20-30\*
- 1073 A 19th Century mahogany cupboard secretaire bookcase with astral glazed doors £70-100\*
- 1074 A reproduction mahogany three drawer side table and a small cane chest of two drawers £20-30\*
- 1075 A 19th Century mahogany two short over two long drawers on bracket feet £80-120\*
- 1076 A Victorian rectangular mahogany tripod table £40-60\*
- 1077 A 19th Century mahogany cupboard top secretaire chest over two short and three long drawers £70-100\*
- 1078 An Edwardian inlaid elbow chair and tub chair plus an oak pedestal desk £30-40\*
- 1079 A Victorian mahogany balloon back nursing chair £30-40\*
- 1080 Three woolwork scene panels £20-40\*
- 1081 A mahogany spindle back chair plus two hanging book shelves £20-30\*
- 1082 A large oak panelled chest containing 18th Century and later timbers £220-260\*
- 1083 A modern pine flour shelved bookcase £20-40\*
- 1084 A Chinese hard wood elbow chair with all over dragon and bird carving £200-400\*



- 1065 An oak mirror back hall stand £30-50\*
- 1066 A gilt wood decorative wall mirror £40-60\*
- 1067 A Georgian oak two drawer chest on turned legs (formally a linen press) £120-180\*



**\*THIS LOT IS SUBJECT TO 17% COMMISSION PLUS VAT. PLEASE READ OUR TERMS AND CONDITIONS.**



- 1085 A mahogany oval gate leg table £50-70\*
- 1086 An Edwardian oak roll top desk  
£100-150\*
- 1087 A cased Kismet-Junior foot pump, blue  
vintage suitcase plus a small wine rack  
£20-40\*
- 1088 An ebonised torchere plus a cane seat  
fender stool £40-60\*
- 1089 A 19th Century oak hanging corner  
cupboard £40-60\*
- 1090 A modern Art Nouveau style stained  
glass wall mirror £30-50\*
- 1091 A white radiator cover £20-30\*
- 1092 An Edwardian mahogany glazed two  
door sideboard bookcase £60-100\*



- 1093 A Victorian painted pine pot cupboard  
plus a modern oak kitchen shelf £30-40\*
- 1094 A modern electric reclining arm chair  
£20-30\*
- 1095 A Georgian mahogany bow front  
sideboard with cellarette on turned legs  
£80-120\*
- 1096 An American spindle back rocking chair  
£40-60\*
- 1097 A 19th Century stick back Windsor  
armchair £50-60\*
- 1098 An iron bound chest plus four little  
walnut tables £20-30\*
- 1099 A child painted giant artist pallet board  
£20-30\*
- 1100 An Edwardian inlaid mahogany dressing  
table £30-50\*
- 1101 A French style painted double bed with  
floral upholstery £100-150\*
- 1102 A Victorian mahogany oval Sutherland  
table plus a box of keys £20-40\*
- 1103 An Edwardian mahogany inlaid single  
door wardrobe £30-40\*
- 1104 An Edwardian shaped topped two tier  
occasional table £30-40\*
- 1105 A modern stainless steel two drawer,  
single glazed door cabinet £20-40\*

- 1106 A Victorian mahogany chest of one  
concealed over two short and four long  
drawers £80-120\*



- 1107 An Edwardian oak framed tub chair with  
blue draylon upholstery £40-60\*
- 1108 A 19th Century mahogany circular snap  
top tripod table £50-70\*
- 1109 A Norwegian pine open shelved unit  
with ten shelves £50-70\*
- 1110 A rectangular oak refectory style hall  
table £50-70\*
- 1111 A woolwork and oak fire screens  
£30-40\*
- 1112 A pierced brass fender, two foot stools,  
folding chess top table, cake stand plus  
a glazed bookcase £40-50\*
- 1113 A modern rectangular dining table with  
six leather seated chairs £100-150\*
- 1114 A Victorian carved mahogany scroll  
back chaise longue £60-80\*
- 1115 A Victorian mahogany woolwork floral  
fire screen on barley twist supports  
£30-50\*
- 1116 A nest of oak tables, a bookcase, a CD  
unit/small chest of drawers plus two  
long and four short floating shelves  
£20-30\*
- 1117 A Victorian flame mahogany and cross  
banded cabinet with two astragal glazed  
doors £100-150\*
- 1118 A set of six Victorian Carolean style  
carved oak chairs plus two carvers with  
non-matching carving £120-160\*
- 1119 A Victorian carved oak dining table on  
bulbous and carved fluted legs £60-100\*
- 1120 An ebonised piano with ivory keys by  
Rud IBach Sohn, Germany £30-50\*



**\*THIS LOT IS SUBJECT TO 17% COMMISSION PLUS VAT. PLEASE READ OUR TERMS AND CONDITIONS.**

- 1121 A walnut and mahogany workbox plus a limed oak cupboard £30-40\*
- 1122 A mahogany twin pedestal desk with leather top and nine drawers £100-150\*
- 1123 A box of mixed woodworking and other tools £30-40\*
- 1124 An 18th Century panelled oak coffer £80-120\*
- 1125 A modern pine five shelved bookcase plus one other £30-40\*
- 1126 An oak nine drawer twin pedestal desk with leather top £50-70\*
- 1127 A pine storage box plus a mahogany piano stool £20-30\*
- 1128 A painted enamel topped table plus two stools £20-30\*
- 1129 A Pegasus lady's bike and a vintage lawn mower £20-40\*
- 1130 An upholstered armchair £20-30\*
- 1131 An upholstered button back low bedroom chair £20-30\*
- 1132 Two upholstered and stud work armchairs £20-40\*
- 1133 A upholstered tub chair plus one other £20-30\*
- 1134 A fold-up ping pong table with cover, bats and balls £20-40\*
- 1135 A selection of old pine trunks and trough etc £30-40\*
- 1136 A vintage folding invalid chair by Alwin £20-30\*
- 1137 A large pine and galvanised metal wine rack £20-40\*
- 1138 A Quantum Tru Comfort mobility scooter £60-80\*
- 1139 A 1980's wall hanging phone booth £20-30\*
- 1140 An Edwardian carved mahogany sideboard (back missing) £30-40\*
- 1141 An oval oak barley twist gate leg table, reproduction mahogany chest etc £20-40\*
- 1142 A 19th Century mahogany chest of two short over three long drawers £60-80\*
- 1143 A mahogany glazed two door cupboard bookcase £30-40\*
- 1144 An Edwardian mahogany two door wardrobe £30-40\*
- 1145 A Nathans style three piece oak unit £30-50\*
- 1146 An onyx top coffee table, beechwood rocking chair plus a standard lamp £20-40\*

- 1147 A painted Bergere elbow chair plus a pine side table £20-40\*
- 1148 A Georgian walnut and mahogany chest on chest of two short over three long over three drawers £250-350\*



- 1149 A small mahogany four drawer chest £30-50\*
- 1150 A pine double pedestal oval dining table £40-60\*
- 1151 An elbow chair with floral tapestry seat and back on open twist supports £30-50\*
- 1152 An Edwardian pine dressing table £20-40\*
- 1153 A Jacobean style carved oak elbow chair £70-100\*
- 1154 A Victorian white painted chest of two over two drawers £20-40\*
- 1155 A modern oak drop leaf table and four chairs £30-50\*
- 1156 A Victorian pine metal bound trunk plus a tin trunk £20-40\*
- 1157 A Victorian painted pine kitchen table with formica top £20-30\*
- 1158 A Jack Gimble of Cromer elm stool, white painted chest, nest of tiled top tables plus four 1960's formica chairs £30-40\*
- 1159 An Eastern hardwood dining table and with chairs with inset black metal backs £90-120\*



**\*THIS LOT IS SUBJECT TO 17% COMMISSION PLUS VAT. PLEASE READ OUR TERMS AND CONDITIONS.**

- 1160 An Islamic brass top folding table plus a nest of three mahogany tables £20-40\*
- 1161 A reproduction mahogany D end table with single leaf £20-30\*
- 1162 An oak barley twist umbrella stand plus an oak cheval mirror £30-50\*
- 1163 A large metal storage trunk £20-30\*
- 1164 An oak six drawer pedestal desk with maroon leather inset top £75-95\*
- 1165 A twin pedestal Victorian mahogany desk with nine drawers and leather top £100-150\*
- 1166 A modern beechwood green leather upholstery chair in Ikea style £20-30\*
- 1167 A black leatherette upholstered revolving chair and a matching foot stool £20-40\*
- 1168 An oak draw leaf table on bulbous supports £20-40\*
- 1169 Two circular oak occasional tables, a Victorian mahogany lady's chair, towel rail plus a nest of three tables £30-40\*
- 1170 A set of four Victorian oak dining chairs £30-50\*
- 1171 A modern brown leather button backed wing armchair with stud work £60-80\*



- 1172 A rectangular oak dining table plus a set of six dining chairs £150-200\*



- 1173 A carved Indian teak elbow chair with cane work back and seat £30-40\*
- 1174 Two oval oak barley twist tables £10-20\*

- 1175 A modern upright piano by Chappell £40-60\*
- 1176 A white variegated marble torchere £30-40\*
- 1177 A reproduction mahogany astragal glazed bookcase sideboard £30-40\*
- 1178 A Victorian tapestry upholstered armchair £20-30\*
- 1179 An oak refectory table on carved bulbous legs £100-150\*
- 1180 A set of six mahogany spindle back chairs with red leather seats £90-120\*
- 1181 A Victorian inlaid mahogany chess top stretcher table, fire screen plus a tapestry stool £20-40\*
- 1182 A spindle back Windsor armchair plus two other pairs of chairs £20-40\*
- 1183 A set of six Victorian mahogany bar back chairs with button back leather seats £50-60\*



- 1184 A Victorian oak extending dining table with two leaves on fluted legs £100-150\*
- 1185 A 19th Century mahogany tilt top dining table on turned column on quatrefoil base £80-120\*
- 1186 A set of six iron and cane conservatory chairs £30-40\*
- 1187 A set of four cane conservatory chairs plus a cane desk with single drawer £40-60\*
- 1188 A pine two drawer side table on turned legs £50-80\*
- 1189 A rectangular pine farm house kitchen table £40-60\*
- 1190 Two upholstered armchairs £30-40\*
- 1191 Two pair of 19th Century bar back chairs with matching upholstery £20-40\*
- 1192 A white painted pine two door cupboard £20-30\*
- 1193 An oak gate leg table, spindle back chair etc £20-30\*

**\*THIS LOT IS SUBJECT TO 17% COMMISSION PLUS VAT. PLEASE READ OUR TERMS AND CONDITIONS.**

**TOYS AND COLLECTABLES SALE  
THURSDAY 30<sup>TH</sup> NOVEMBER**

**MILITARIA, MEDALS, AIR GUNS,  
SPORTING GUNS AND FIREARMS  
SALE ETC  
FRIDAY 1<sup>ST</sup> DECEMBER**

**COMMENCING AT 10AM  
BOTH DAYS**

**VIEWING:**

Tuesday 28<sup>th</sup> November between 9am-5pm

Wednesday 29<sup>th</sup> November between  
9am-7.30pm

Thursday 30<sup>th</sup> November between  
8am-10am and 3pm-7.30pm

Friday 1<sup>st</sup> December between 8am-10am

For further information, please contact Bob Pearse for Toys and  
Collectables and Mark Whistler for Militaria on 01502 713490

\*THIS LOT IS SUBJECT TO 17% COMMISSION PLUS VAT. PLEASE READ OUR TERMS AND CONDITIONS.





# GENERAL CONDITIONS OF SALE

- 1 THE BUYER** - The highest bidder acknowledged as such by the auctioneer will be the buyer. If any dispute arises, the auctioneer shall have absolute discretion to settle the matter. The auctioneer shall rule the bidding and no bid shall be retracted. The auctioneer reserves the right to refuse any bid. The bidder in the room who is successful in purchasing any lot or lots is entirely responsible for paying for such lot or lots in accordance with our general conditions of sale. Purchases made on behalf of a third party are entirely the responsibility of the bidder in the room. The auctioneer reserves the right to bid on behalf of the vendors for any lot and to withdraw, consolidate or divide any lot or lots.
- 2 REGISTRATION** - To assist the progress of sale, all prospective buyers must register their name and address at reception and collect a bidding number before the sale commences. Should there be any doubts as to price or buyer, please draw the auctioneer's attention to it immediately.
- 3 BUYER'S PREMIUM** - A buyer's premium of 17% plus VAT at the standard rate of the hammer price is payable on each lot.
- 4 VENDOR'S COMMISSION** - Our standard Vendor's commission of 14% plus VAT will be charged up to £1000 - rate negotiable prior to sale. In addition, each lot will be subject to a lotting fee of £3 plus VAT.
- 5 PURCHASE VIA LIVE BIDDING** - Any lots purchased via the saleroom.com live auction service will be subject to an additional 3% commission charge plus VAT at the current rate imposed on the hammer price. In completing the bidder registration on [www.the-saleroom.com](http://www.the-saleroom.com) and providing your credit card details and unless alternative arrangements are made with Durrants you hereby agree to the following terms:
  - a) Durrants are authorised to charge the credit/debit card given in part or full payment including all fees for items successfully purchased in the auction via the sale-room.com, and
  - b) You are authorised to provide these credit/debit card details to Durrants through [www.the-saleroom.com](http://www.the-saleroom.com) and agree that Durrants are entitled to ship the goods to the cardholder name and address provided in fulfilment of the sale.
- 6 VALUE ADDED TAX** - Lots on which Value Added Tax may be payable by the buyer on the "hammer price" are indicated in the catalogue by a symbol beside the lot number. The buyer shall pay any VAT which may be due on any amounts owed by the buyer under these conditions of sale at the rates prevailing on the day of the auction.
- 7 AUCTIONEERS MARGIN SCHEME** - The Auctioneers Margin Scheme allows auctioneers to sell items without VAT on the hammer price. Under the margin scheme an amount equivalent to VAT at the current rate is added to the buyer's premium. This amount cannot be refunded. The VAT element will not be shown separately on the buyer's invoice.
- 8 PAYMENTS**

**Purchaser** - Our methods of payment are with bank transfer, cash, debit or credit card (in person only) or by cheque supported by a valid guarantee card or bankers reference. All purchases must be paid in full on the day of the sale before any lot is removed from the premises. No goods will be released to buyers unknown to the auctioneers without adequate reference or before their cheques have cleared. Anyone who, for whatever reason, is unable to pay for their goods on the day of the sale must inform the Saleroom Manager as to when payment will be made. There is a 2% surcharge on credit card payments.

**Vendor** - Vendors will normally receive proceeds of sale 10 working days after. However, where individual consigned Lots have sold for £500 or above Durrants reserve the right to hold payment until we have been paid by the purchaser. We also reserve the right to rescind a sale, if it is clear that having pursued all the usual channels Durrants are unlikely to receive payment on the Lot in question. In such circumstances, the Lot(s) involved will be reoffered in a later Sale with the sale reserve (if applicable).
- 9 ATTRIBUTION AND CONDITION OF LOTS** - Every effort is made to ensure the accuracy of any statement as to authorship, attribution, origin, date, age, provenance and condition of any lot whether or not such statement forms part of the description of any such lot. Whether any such statement is made orally or in the catalogue it is an expression of opinion. Each buyer by making a bid for a lot acknowledges that he has satisfied himself fully as to the attribution and condition of the lot. If any damage is done to any lot at the viewing or before, during or after the sale, such damage shall be made good by the person committing such damage, principals being responsible for the acts of their servants, such damage to be assessed by the auctioneers. Written condition reports are available for all Lots upon request. Buyers that do not request condition reports forfeit their right to a refund, except where we are in breach of Contract.

Verbal condition reports will not be given. The latest that a condition report will be e-mailed or posted is the day immediately before the sale.
- 10 ATTRIBUTION OF PICTURES** - (Condition 7 also refers).
  - a) The forename(s) (or asterisks where not known) and surname of the artist indicates in our opinion a work by the artist
  - b) The initials of the forename(s) and the surname of the artist indicates in our opinion a work of the period of the artist which may be wholly or in part his work.
  - c) The surname of the artist indicates in our opinion a work of the school or by one of the followers of the artist or in his style and of uncertain date.
  - d) Bears signature indicates in our opinion that this is not the signature of the artist.
  - e) All other terms are self-explanatory.
- 11 OWNERSHIP OF PURCHASES** - The ownership of the lot(s) purchased will not pass to the buyer until the buyer has paid the auctioneers in full the total amount due and the auctioneers have applied such payment to the lot.
- 12 TRANSFER OF RISK** - Each lot shall be at the purchaser's sole risk from the fall of the hammer and shall be sold with all faults and imperfections. The purchaser is deemed to have inspected the lots and satisfied himself as to their condition. The liability to insure any purchased Lot shall pass from the auctioneer to the purchaser on the fall of the hammer.
- 13 COMMISSION BIDS** - If instructed, the auctioneers will execute bids and advise prospective purchasers. This service is free. Lots will always be purchased as cheaply as is allowed by such other bids and reserves as are on the auctioneer's books. In the event of identical bids, the earliest will take precedence. There must always be a maximum limit indicated, i.e. the amount to which you would bid if you were attending the auction yourself. "Buy" or unlimited bids will not be accepted. Commission bids placed by telephone are accepted at the client's risk. We do accept commission bids by facsimile. We urge our clients to place such commission bids within one hour of the close of the view day.
- 14 TELEPHONE BIDS** - Requests for telephone bidding must be registered with the Saleroom Manager within one hour of the close of the view day. It may not be possible to accept requests on sale days. Written confirmation of such bids from persons unknown to the auctioneers must be received before the commencement of the sale. Whilst every effort will be made to execute telephone bidding, the auctioneers cannot be held responsible for any default or neglect in connection with this service. All such arrangements therefore are made entirely at the prospective buyer's risk.
- 15 COLLECTION OF GOODS** - At the purchaser's sole cost and expense, the purchaser shall collect the lot(s) purchased not later than 12 mid-day after the day of the auction, not before payment to the auctioneers of the total amount due. After 5 working days, storage charges of £2 + VAT per day per lot will apply to any goods that have not been collected.
- 16 POSTAGE / SHIPPING** - Goods will not be released to couriers unless they are delivering to the address that the buyer has used for registration. Couriers are instructed not to take alternate delivery instructions once dispatched
- 17 COMPLIANCE** - Upon failure of any purchaser to comply with any of the above conditions any money deposited by the purchaser in part payments shall be forfeited to the owner of the lot, he paying there from, all just expenses. Any lot not paid for within 1 month of the purchase date shall be resold by public auction or private contract and the deficiency (if any) arising from such a resale together with all expenses attending the same shall be made good by the defaulter at this sale who shall have no claim to any surplus which may arise on a resale.
- 18 PRE SALE ESTIMATES** - Given by the auctioneers or a member of their staff are their opinion as to what they consider any particular lot is likely to realise. However any lot may sell at a figure less than the lower estimate and for more than the higher estimated figure. The auctioneers and their staff reserve the right to alter their pre-sale estimates, either upwards or downwards, on any lot at any time, up until such time as the lot is offered for sale.
- 19 RESERVES** - The auctioneers and vendors reserve the right:
  - a) To remove the reserve completely from a previously reserved lot at any time up until it is offered for sale.
  - b) To place a reserve on a previously unreserved lot at any time up until it is offered for sale.
  - c) To alter a reserve, either upwards or downwards, on any lot at any time up until it is offered for sale.
  - d) Should any item fail to sell at the reserve price on the day of the Auction they will be subject to commission of 3% of the Reserve Price, subject to a minimum fee of £5 plus VAT.
- 20 THIRD PARTY LIABILITY** - Every person on the auctioneers' premises before, during or after a sale or at any other time, shall be deemed to be there at their own risk and shall have no claim against the auctioneer in respect of any injury they may sustain or any accident which may occur.
- 21 ANY NOTICES** - Any notices that may be displayed from time to time by the auctioneers in the sale ground or salerooms shall be deemed to form part of and be included within the general conditions of sale.
- 22 MONEY LAUNDERING REGULATIONS** - In order to comply with current anti-money laundering legislation we are unable to accept cash payments over £8,000. Any purchaser wishing to pay cash for any purchase over £1,000 may be asked for identification e.g. Passport or photo driving licence.
- 23 DROIT DE SUITE ROYALTY CHARGES** - In essence this charge will be made to the purchaser of any work of art that has been produced by a living artist or for a period of up to 70yrs after the artist's death, on lots with a hammer price more than the UK sterling equivalent of €1,000. Please refer to [www.dacs.org.uk](http://www.dacs.org.uk) for further rules and current exchange rates. The royalty charge will be added to purchase invoices and must be paid before items can be cleared. All Royalty charges are paid to the Design and Artists Copyright Society (DACS) by the Auctioneers and no handling costs or additional fees with respect to these charges will be retained by the Auctioneer.
- 24 RICS REGULATION**
  - a) All Clients monies are paid into our Auction Clients Account with Barclays Bank PLC Norfolk Business and Agricultural Corporate Banking Centre, Norwich, Norfolk (any interest accrued monies held will be retained by Durrants)
  - b) Durrants operates an RICS approved complaints policy, details can be found on our website [www.durrants.com](http://www.durrants.com)
- 25 RESCISSION** - Notwithstanding any other terms of these Conditions, if within fourteen days of the date of sale Durrants receive from the buyer of any lot notice in writing that in his view the lot is a deliberate forgery and the lot is returned to them in this period in the same condition as at the time of sale and produces written evidence, the burden of proof to be upon the buyer, satisfies Durrants that considered in the light of the entry in the catalogue the lot is a deliberate forgery then the sale of the lot will be rescinded. The purchase price will be refunded once the sum has been returned to Durrants by the Seller.

If before the proceeds of the sale have been paid to the Seller Durrants receives notice from the buyer that, in the buyers view the sale should be rescinded and Durrants agrees with that view, Durrants will rescind the sale and refund to the Buyer any amount paid to Durrants in respect of the Lot, and if such notice is received after payment of the proceeds of this sale the Seller will on notice reimburse Durrants to the full amount of the sum refunded to the Buyer.
- 26 REPRODUCTIONS** - Owing to the large number of Third Reich and other uniforms and accoutrements being used for films, television and plays, it becomes increasingly difficult to ascertain the authenticity of certain pieces. We catalogue all items as seen, and offer no guarantee as to their authenticity. The terms 'bronze', 'silver' and 'gold' refer to the grades in which medals, badges, etc., were awarded and not to their composition. Items described as (PATTERN) are an example of the described item with no guarantee of age or authenticity

# BUYER REGISTRATION FORM

Please enter the information required below before taking it to a member of staff. Please ensure that you have a suitable form of identification to verify the information you are giving, e.g. driving licence, utility bill etc. Once you have done this you will be issued with a card and this will have your buyer's number on it

Mr / Mrs / Miss / Other:	_____	Initials:	_____	Surname:	_____
Company	_____				
Address	_____				
	_____				
	_____				
	_____				
Tel:	_____				
Mobile:	_____				
E-mail:	_____				
Credit / Debit Card No:	_____				
Start Date:	_____	Expiry Date:	_____	Security Code:	_____

Where a buyer is registering for the first time and leaving a commission bid the auctioneers reserve the right to undertake a credit card transaction using the details which have been supplied if the purchase is successful.

*For Office Use Only*  
*Buyers Registration Number: -*

## DURRANTS AUCTION ROOMS

The Old School House, Peddars Lane, Beccles, Suffolk, NR34 9UE

Tel: 01502 713490

Email: [auctionrooms@durrants.com](mailto:auctionrooms@durrants.com)

Web: [www.durrants.com](http://www.durrants.com)





## DIRECTIONS

### FROM A12/A145 (SOUTH)

On entering Beccles, at the first set of traffic lights turn right into Peddars Lane. The Auction Rooms are 200 metres along the road on your right.

### FROM A143/A146 (BURY ST EDMUNDS & NORWICH)

Approaching Beccles, at the McDonald's roundabout, go straight over, then take the first right via Gillingham over the bridge into Beccles. Follow the road past the new Tesco, go straight at the first set of traffic lights, right at the second and the Auction Rooms are 100 metres on your left.

### FROM A146 (LOWESTOFT)

At the Worlingham roundabout bear left through Worlingham. At the first set of lights go straight over, at the second turn left and the Auction Rooms are 100 metres on your left.

[WWW.DURRANTS.COM](http://WWW.DURRANTS.COM)

**BECCLES**  
01502 712122  
10 New Market  
Beccles  
Suffolk  
NR34 9HA

**DISS**  
01379 642233  
Pump Hill House  
2b Market Hill  
Diss, Norfolk  
IP22 4WH

**HARLESTON**  
01379 852217  
32-34 Thoroughfare  
Harleston  
Norfolk  
IP20 9AU

**SOUTHWOLD**  
01502 723292  
98 High Street  
Southwold  
Suffolk  
IP18 6DP

**HALESWORTH**  
01986 872553  
12 Thoroughfare  
Halesworth  
Suffolk  
IP19 8AH

**AUCTION ROOMS**  
01502 713490  
The Old School House  
Peddars Lane  
Beccles, Suffolk  
NR34 9UE

**MAYFAIR**  
0870 112 7099  
Cashel House  
15 Thayer Street  
London  
W1U 3JT