

DURRANTS

SINCE 1853

RESIDENTIAL

AGRICULTURAL

COMMERCIAL

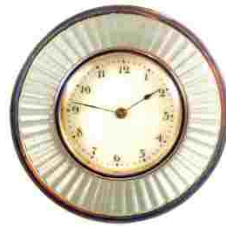
ON SITE AUCTIONS

PROPERTY MANAGEMENT

BUILDING CONSULTANCY

AUCTION ROOMS

HOLIDAY COTTAGES



Friday 16th June 2017

Antiques and Fine Art commencing 10.00am

Furniture plus Courtyard commencing at 1.00pm



ANTIQUES AND FINE ART WITH JEWELLERY,
SILVER AND FURNITURE

Tel: 01502 713490

WWW.DURRANTS.COM

RICS ACCREDITED VALUERS AND AUCTIONEERS

Catalogues

£3.00

NOTES FOR PROSPECTIVE PURCHASERS

DURRANTS AUCTIONEERS AND VALUERS

Durrants' experience of Auction Sales dates back to 1853 and since that time we have continued to undertake chattel sales and valuations throughout Norfolk and Suffolk.

From our Auction Rooms at Peddars Lane, Beccles we conduct Fine Art and Antique Auction Sales every month, interspersed with Specialist Sales.

Our team of Valuers and Auctioneers undertake valuations for probate and insurance purposes and provide advice for sale and family division.

RICS accredited Valuers and Auctioneers

OUR SERVICE

With our own salerooms, experienced staff and removal vehicles we are able to offer a comprehensive and cost effective service to executors, solicitors and private clients.

- On site inspections at short notice by appointment
- Experienced valuers throughout the group
- Verbal advice or comprehensive reports
- Professional and confidential service
- Specialist valuations of furniture, ceramics, pictures, silver, jewellery, clocks and watches, books, toys and dolls, stamps, postcards, coins, Militaria, swords, medals Sporting Guns and Antique Firearms

Durrants has offices in Beccles, Halesworth, Southwold, Harleston and Diss. Each has a team of experienced Chartered Surveyors and Estate Agents, offering a wide range of services encompassing Agricultural, Residential, Commercial and Investment properties. We also have a specialist Planning and Design Group.

FIREARMS

We have full R.F.D. capabilities enabling us to sell on your behalf all items that require licences. Our registered Firearms Dealership Number is Suffolk 252. We are always happy to help with any firearm queries, legal requirements or valuations.

VIEWING

The Viewing days for the Friday 16th June Antiques and Fine Art with Jewellery and Silver are:-

Tuesday 13th June between **9am and 5pm**

Wednesday 14th June between **9am and 5pm**

Thursday 15th June between **9am and 7.30pm**

The morning of the sale from 8am

SALE DAY TIMETABLE

The antiques sale starts at 10.00am in the upstairs saleroom at Lot 1.

There will be no lunch break during the course of the day.

Clearing is allowed during the sale in the upstairs saleroom.

The furniture sale starts at 1pm at Lot 1001 in the ground floor saleroom.

SUMMARY OF CATALOGUE

China, Glass, Clocks, Pictures, Wood, Metal,
Pottery and Porcelain, Objects Vertue, Silver,
Jewellery and Watches

Lots 1 – 550

Furniture and Courtyard

Lots 1001 - 1207

Missing Lot numbers – 42 and 439

For further images please visit www.durrants.com or www.the-saleroom.com/durrants

FORTHCOMING EVENTS

**FREE VALUATIONS AND TAKING IN OF GOODS MONDAY TO FRIDAY
BETWEEN 9AM - 5PM (EXCEPT SALE DAY) AND ALSO EVERY SATURDAY
MORNING BETWEEN 9AM - 12 NOON**

AUCTION CALENDAR 2017

Friday 16th June - Antiques and Fine Art with Jewellery and Silver

Friday 7th July - Antiques and Fine Art with Jewellery and Silver

Saturday 15th July – **Sporting and Antique Guns of Distinction with Related Items and Taxidermy**

Friday 28th July - Antiques and Fine Art with Jewellery and Silver

Friday 18th August - Antiques and Fine Art with Jewellery and Silver

Thursday 31st August and Friday 1st September - A two day sale of Toys, Collectables, Militaria, Medals, Air Guns, Sporting Guns and Firearms etc

Friday 15th September - Antiques and Fine Art with Jewellery and Silver

Friday 6th October - Antiques and Fine Art with Jewellery and Silver

Friday 27th October - Antiques and Fine Art with Jewellery and Silver

Friday 17th November - Antiques and Fine Art with Jewellery and Silver

Thursday 30th November and Friday 1st December – A two day sale of Toys, Collectables, Militaria, Medals, Air Guns, Sporting Guns and Firearms etc

Friday 15th December - Antiques and Fine Art with Jewellery and Silver

These dates may be subject to change – please contact us during the year to ensure you don't miss out!

VIEWING

Antique and Fine Art Sales are on view the week of the sale - Tuesday and Wednesday 9am-5pm and Thursday 9am-7.30pm, or by appointment.

Toy, Collectable and Militaria Sales are on view the week of the sale - Tuesday 9am-5pm, Wednesday 9am-7.30pm and Thursday 8am-10am and 3pm-7.30pm

(no viewing when the auction is in progress on the Thursday), or by appointment.

Sporting and Antique Guns of Distinction with Taxidermy

Friday between 9am-7.30pm, or by appointment

NO VIEWING WHILST ANY SALE IS IN PROGRESS

All Auction catalogues, photographs, particulars and results are available online at www.durrants.com
We are also happy to carry out additional and one off sales on site or at our Sale Rooms by arrangement.
House clearances by arrangement.

For further information please call:

Mark Whistler ANAVA Auction Rooms Manager,
Specialist Militaria, Firearms and Furniture Valuer
01502 713490 or mark.whistler@durrants.com

Beverley Baker Assistant Manager and
Head of Administration
01502 713490 or auctionrooms@durrants.com

Robert Pearse Valuer for Stamps, Postcards,
Collectables, Ceramics, Books and Watches
01502 713490 or auctionrooms@durrants.com

James Felgate MNAVA Valuer and Photographer
01502 713490 or auctionrooms@durrants.com

Anna Paulding ANAVA Auction Administrator /
House Clearance Coordinator
01502 713490 or auctionrooms@durrants.com

Karen Goring Auction Administrator
01502 713490 or auctionrooms@durrants.com

ONLINE BIDDING

We have teamed up with the-saleroom.com to allow you to bid at our auctions.
Simply register on www.the-saleroom.com/durrants under Live Auctions.

Bid online at our auctions through
the-saleroom.com

**CHINA, GLASS, CLOCKS, PICTURES,
WOOD, METAL, POTTERY, PORCELAIN,
OBJECTS VERTUE, SILVER, JEWELLERY
AND WATCHES**

Lots 1 – 550

- | | | | | | |
|----|--|-----------|----|---|---------|
| 1 | A tray of various Hummel figurines | £30-50* | 23 | Nine half bottles of 1986 Chateau Cissac, Premier Cru Bourgeois Appellation Haut-Medoc Controlee Cissac (Gironde) (some labels detached) | £50-80* |
| 2 | Five Royal Doulton character jugs, Robin Hood, Town Crier and Old Charley plus two smaller | £30-50* | 24 | A wine rack containing various wines, Viz Chianti, Valpolicella, Bergerac 1997, Bell Tower Shiraz Cabernet, Gevroy 1978 (part missing labels), unidentified 1990, Chateau Plince Pomorol 1991 | £30-50* |
| 3 | An oak cased striking mantel clock | £20-40* | 25 | Gt Yarmouth and other plates plus cased nautical items | £20-30* |
| 4 | A silver plated four piece tea set and tray plus other silver plate | £40-60* | 26 | An iron framed whetstone plus an accordion | £20-40* |
| 5 | A wooden chess board and set | £40-60* | 27 | Various Portuguese blue and white baskets etc | £20-30* |
| 6 | Brass fire irons, dogs and horse brasses | £20-40* | 28 | Stephanie Walters watercolour, The Pond Wyverstone plus Margaret Saunders acrylic, Summer Meadow | £20-40* |
| 7 | A floral embossed silver plated punch bowl | £50-70* | 29 | Sidney Shaw, four oils on board, Autumn at Willy Lots Cottage, Way Down to the Sea, Sunshine and Shadow plus Winter Tree Study | £20-40* |
| 8 | A wooden model galleon | £20-30* | 30 | A signed G.P.Childs limited edition print, Gt Yarmouth drifter plus other pictures | £20-40* |
| 9 | A pair of brass carriage lamps (converted) | £40-60* | 31 | A pair of oils on board of beach scenes with sailing vessels | £30-40* |
| 10 | A ships masthead lamp (converted) | £20-40* | 32 | Thomas Sidney, watercolour, The Lizard signed lower left, 7" x 9" | £20-40* |
| 11 | A gilt metal architectural mantel clock | £50-80* | 33 | Edward Smith 1911, watercolour of a head of a man, 8" x 7" | £20-30* |
| 12 | Various continental figurines, plates etc | £20-30* | 34 | L.S.Lowry, limited edition of 750 unsigned street scenes, Adam Collection Ltd, 12" x 9" | £70-90* |
| 13 | A set of seven graduated copper saucepans with brass handles | £30-40* | 35 | A print of the Crucifixion plus other pictures | £20-30* |
| 14 | A tray of various china and glass | £20-30* | 36 | An oil on canvas of a horse stable, marked Stannard, 19" x 23" | £30-40* |
| 15 | A Victorian calf bound Family Bible plus various GB coinage | £20-40* | 37 | R.A.Sherrington, watercolour titled 'Near Lewes', 9" x 20" | £20-40* |
| 16 | A Victorian mahogany brass bound writing slope | £50-70* | 38 | John Sutton, watercolour titled 'Late October West Witton', 13" x 21" | £50-80* |
| 17 | A picnic basket containing Victorian toilet jug and jardiniere plus a tray of various china | £20-40* | 39 | Five various continental scene watercolours | £30-50* |
| 18 | A tray of various Ribbon plates and bowls | £20-30* | 40 | Robert Farren, thirteen etchings produced for Cambridge University A.D.C. First Performance of the Greek Pays, Ajax by Sophocles 1882 and the Birds of Aristophanes 1883 | £30-50* |
| 19 | A silver coated country artists owl titled 'Evenings Venture', limited edition No.4 of 100 with certificate | £100-150* | 41 | Cornelius Pearson (1805-1891) watercolour figure on a country path, signed and dated 1877, 6" x 9" | £20-30* |
| 20 | Two Moet & Chandon champagne bottles, 1943 to 1953 | £20-30* | 42 | No Lot | |
| 21 | Two early 18th Century side ejector brass candlesticks, 18th Century petal base brass candlestick plus a pair of short Georgian brass candlesticks | £50-70* | | | |
| 22 | Eleven bottles of 1974 Chateau Haut Batailley Paulilac Appellation Pauillac Controllse (some labels detached) | £80-120* | | | |

***THIS LOT IS SUBJECT TO 17% COMMISSION PLUS VAT. PLEASE READ OUR TERMS AND CONDITIONS.**

- 43 A.M.Beverley, oil on canvas of houses in Chediston Street, Halesworth, 13" x 24" £20-40*
- 44 A pair of Edward Pearce watercolours, one of Beccles and one of Snape Maltings, 10" x 14" £70-100*
- 45 Leonard Walker, watercolour of Lake Lothing, 10" x 14" £20-40*
- 46 George Race (1872-1957), circular oil on board Steam Drifter LT1051, signed and dated 1912, dia 7" £150-200*



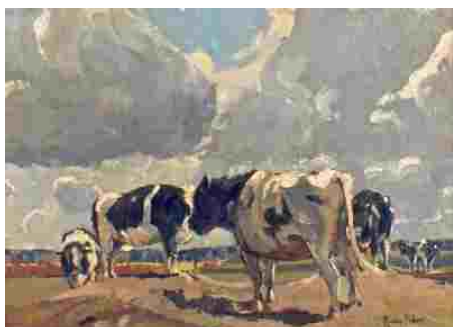
- 47 George Race (1872-1957), oil on board Steam Drifter LT532 Strathberry, signed and dated 1923, 11" x 17" £300-400*



- 48 George Vemply Burwood (1844-1917), watercolour of Lowestoft Lighthouse, signed and dated 1893, 8" x 12" £100-150*




- 49 Rowland Fisher (1885-1969), unsigned watercolour of Lowestoft Harbour with fishing smack, 12" x 9" £70-100*
- 49A Rowland Fisher (1885-1969) oil on board of Friesian cattle grazing with stormy sky's, signed lower right, 15" x 19 1/2" £500-600*





- 50 Duncan Faine, oil on canvas of a country scene and Saunders oil on board of a beached sailing vessel £20-40*
- 51 Godfrey Sayer, watercolour titled 'Blakeney Harbour', signed lower left, 14" x 18 1/2" £50-80*
- 52 William Bennett, watercolour of a mountain and river scene, signed middle bottom and dated 1857, 14" x 20" £80-120*
- 53 Oil on canvas of a portrait of young gentleman in gilt frame, circa 1910, 26" x 21" (as found) £60-90*
- 54 A framed Foresters certificate plus two other pictures £20-40*
- 55 H.Burns, Gouache, Australian woodland scene with house, 23" x 34" £20-30*
- 56 Three gilt framed bird prints plus two photo landscape prints £20-40*
- 57 Various watercolours and prints £20-40*
- 58 WITHDRAWN
- 59 A Nailsea blue glass rolling pin plus other china and glass £20-40*
- 60 Boxed glasses and various china £20-40*
- 61 A Royal Doulton Camelot dinner set £30-50*
- 62 Various botanical and other watercolour and prints £20-40*
- 63 Various volumes of Beatrix Potter plus historical life and times (two boxes) £20-40*
- 64 Various brass and copper ware etc £20-40*
- 65 Items of metalware to include a copper log bin, carriage lamp etc (two boxes) £20-40*
- 66 Seven various wool rugs £30-40*
- 67 A cut glass decanter, green glass wines plus other glassware (two boxes) £20-30*
- 68 Various Poole plus other glass and china £20-40*
- 69 A Japanese porcelain Platinum Rose dinner and tea set £20-30*
- 70 A Poole mouse, Coronation tin and sundries £20-30*
- 71 A copper planter, blue Bakelite lunch box and sundries £20-30*
- 72 A 19th Century mahogany two compartment Sarcophagus tea caddy with cut glass blending bowl £70-100*
- 73 A black marble striking mantel clock £30-50*
- 74 A pair of continental carved figural panels with a wooden mounted time piece £50-70*

***THIS LOT IS SUBJECT TO 17% COMMISSION PLUS VAT. PLEASE READ OUR TERMS AND CONDITIONS.**

- | | | | | | |
|-----|--|---------|-----|--|---------|
| 75 | A Victorian lilac and floral toilet set plus two rose decorated comports | £20-40* | 99 | A heavy duty inspection lamp, tin plate globe and wooden letter rack | £30-40* |
| 76 | A pair of black leather riding boots and stretchers | £30-50* | 100 | A violin with label, Bienfait plus an Eastern European stringed instrument | £40-60* |
| 77 | Various china and glass including a 19th Century Delft clog | £20-40* | 101 | A cloisonne vase with floral decoration, height 12" | £50-80* |
| 78 | A silver plated toast rack on floral porcelain base plus other china | £20-40* | |  | |
| 79 | Zeiss Dialyt 10x40B binoculars, African stone bust plus other items | £30-40* | 102 | Victorian brass candlesticks plus other brass (two trays) | £40-60* |
| 80 | A silver photo frame, cutlery etc | £40-60* | 103 | A large quantity of heart shaped trinket boxes plus a large quantity of mainly porcelain ring trees | £20-30* |
| 81 | An early 19th Century English white and gilt tea and coffee set | £50-70* | 104 | A mottled green bulbous Art Glass vase | £20-30* |
| 82 | A Canon camera plus various lenses | £20-40* | 105 | An early 20th Century copper water carrier with lid and swing and fixed handles, 21" high overall | £60-80* |
| 83 | A case of German gold plated cutlery | £40-60* | 106 | A brass hand bell, hip flasks and sundries | £20-40* |
| 83A | A black marble striking mantel clock | £40-60* | 107 | A Bernard Rooke pottery table lamp and shade of bee and leaf form | £30-50* |
| 84 | A 19th Century copper coal helmet, warming pan and scoop | £30-50* | 108 | Japanese and Chinese porcelain to include rice bowls, ginger gar (with ginger) etc | £20-40* |
| 85 | A Victorian copper kettle | £20-40* | 109 | Three Chinese ginger jars plus crested and other china including Whimsies | £30-50* |
| 86 | An Egyptian style cold painted bronze of a Pharaohs head | £50-70* | 110 | A Chinese blue ground floral carpet, 108" x 69" | £20-40* |
| 87 | Indian ebony elephant group, bird ornaments etc | £20-40* | 111 | A Sidi black and grey leather biker jacket | £30-50* |
| 87A | Prices and other Cottage ware | £20-30* | 112 | Two pottery cats plus two china table lamps and shades | £30-40* |
| 88 | Three 18th Century Nankin plates (as found) plus a pair of 19th Century Japanese blue and white plates | £20-40* | 113 | An Irish Bodhran drum | £20-40* |
| 89 | Various 19th Century English blue and white china including Miles Mason, Spode etc | £40-60* | 114 | Cranberry wine glasses plus other glass (two trays) | £30-40* |
| 90 | A Dresden bowl plus other china and glass | £20-40* | 115 | An Orrefors glass vase of square section plus other glass | £20-40* |
| 91 | A Chinese porcelain seated scholar plus 19th Century and other china etc | £20-40* | 116 | An African carved and cross hatched ceremonial spear, a paddle with concentric circular carving and arrows | £50-70* |
| 92 | A Copeland Spode mauve ground floral tea set | £30-50* | 117 | Japanese blue and white eggshell dinner and tea set plus other china | £20-40* |
| 93 | Two decanters plus cut and other glasses | £20-40* | 118 | Grosvenor and Colclough tea sets | £20-30* |
| 94 | A Poole hors d'oeuvres dish plus three other pieces | £30-40* | | | |
| 95 | Various glass paperweights plus a Royal Doulton figurine Catherine HN 3044 | £20-40* | | | |
| 96 | A Tibetan copper and white metal temple horn | £30-50* | | | |
| 97 | A 19th Century copper kettle and saucepans | £30-50* | | | |
| 98 | A 19th Century mahogany writing slope with fittings | £40-60* | | | |

***THIS LOT IS SUBJECT TO 17% COMMISSION PLUS VAT. PLEASE READ OUR TERMS AND CONDITIONS.**

- 119 An extensive Copeland Spode 'Spodes George III' dinner set £150-200*
- 120 Various volumes on horses, stud books etc £20-40*
- 121 A Royal Cauldon blue and white landscape bowl plus other china and glass £20-30*
- 122 A vintage steel rabbiting or trench spade £20-40*
- 123 A brass and mesh fire guard, leather suitcase plus a wicker bottle carrier £20-30*
- 124 Two pottery jardiniere stands £20-30*
- 125 A large floral and inlaid mahogany music box £600-800*
- 
- 126 A large inlaid mahogany and walnut music box playing eight airs with six bells and seven hammer drum strikes (three missing combs) £1200-1400*
- 
- 127 Various fruit bowls plus other china etc £20-30*
- 128 A brass light fitting, cherub droplet lamp and a print 'Last Supper' £20-40*
- 129 Brass Beam scales and weights £40-60*
- 130 An Astrakhan coat, two fur stoles, a hat plus a brown fur rug £20-40*
- 131 A blue decanter and glass set plus other china and glass £20-30*
- 132 A box of various china £20-30*
- 133 An oak barometer (as found) £20-30*
- 134 A Tiffany style table lamp plus four others £40-60*
- 135 Various miniature teapots, Caithness paperweight plus Royal and other china £20-40*
- 136 A Victorian copper kettle, an aluminium yacht plus other items £30-50*
- 137 A Copeland Spode tower cheese dish, figurines plus other china and glass £30-50*
- 138 A selection of Goss china plus other items £20-30*
- 139 A Majolica fish jug, Devon ware plus other china and glass £20-40*
- 140 A Brass planter, oil lamp plus two cases of lawn bowls £20-30*
- 141 A stoneware crock, pottery vase plus two spaghetti jars £20-30*
- 142 Three Victorian calf bound Bibles £20-40*
- 143 A box of various china plus a lilac rose toilet jug and bowl £20-30*
- 144 A 19th Century copper cauldron plus various glass bottles £20-40*
- 145 Twenty five volumes, Punch Library of Humor £30-40*
- 146 A 19th Century brass and copper jug plus metal and wooden sundries £30-50*
- 147 An Aynsley rose fruit bowl and other china £20-30*
- 148 Armstrong Siddeley wheel cap (original) with a Corvette advertising sign (original) £50-70*
- 149 Various toilet wares, enamel flour bin, carboy and glass shade £20-30*
- 150 Royal Doulton Westwood dinner and tea wares etc £20-40*
- 151 A bowler hat by Cunningham & Co Edinburgh, other hats including a Fez plus a dartboard and a boxed Terrys Exerciser £40-60*
- 152 Royal Worcester Evesham and other china £30-50*
- 153 A Victorian blue ground floral pottery jardiniere (heavily restored) and stand £50-80*
- 154 A silver plated teapot, cutlery and sundries (box and case) £20-30*
- 155 A canteen of cutlery plus other items £20-40*
- 156 A retro radiogram on stand £20-40*
- 157 A box of various china and glass £20-30*
- 158 Two boxes of china plus a rose decorated jug and bowl £20-40*
- 159 A Japanese eggshell tea set £20-30*
- 160 Four sepia lithographic prints of Egyptian scenes £20-40*
- 161 A wine rack containing three bottles of Chateau Fontblanch 1994, Chateau Faget 1989, Chateau La Lauzette 1993, Chateau Pedesclaux 1986, Chateau Guad La Rose 1974, Chateau Haut-Batailly 1984 and Corton Bonneau De Martray 1985 £50-80*

***THIS LOT IS SUBJECT TO 17% COMMISSION PLUS VAT. PLEASE READ OUR TERMS AND CONDITIONS.**

- | | | | | | |
|-----|---|---------|------|--|-----------|
| 162 | A wine rack containing various French, Italian and other wines | £20-40* | 185 | A cased chemical balance | £30-40* |
| 163 | A mantel clock, wooden candlesticks, four pictures of ladies and Royalty books (two boxes) | £20-40* | 186 | A 19th Century mahogany banjo barometer | £60-90* |
| 164 | A pair of ceramic table lamps with silk shades | £60-80* | 187 | A Victorian copper coal helmet plus a Singer sewing machine | £30-40* |
| 165 | A pair of two branch candelabra plus other silver plate | £50-70* | 188 | An octagonal drop dial wall clock | £40-60* |
| 166 | French wines, Viz, 1985 Corton Bonneau Du Martray, 1995 Fitou-Les Belles Roches, 1975 Volnay-Remy Gauthier, Chateau Font Blanche 1994, 1986 Contes De Charlogne, Pau Jabouillet Hermitage (label detached) plus one other Hermitage (damaged label) | £50-80* | 189 | A large clay pot, china, glass and sundries | £20-40* |
| 167 | A boxed bottle of Bols Creme de Menthe plus a bottle of Algerian red wine (cost 8 shillings) | £20-30* | 190 | Various contemporary watercolours and prints | £20-40* |
| 168 | Two boxes of spirit miniatures | £20-30* | 191 | Three pieces of Persian bird decorated pottery | £20-40* |
| 169 | Various jardinières, figurines plus other china and glass (two boxes) | £20-40* | 192 | Various porcelain fruit and floral plates and dishes etc (two boxes) | £30-50* |
| 170 | Various volumes on antiques and horse racing etc (two boxes) | £20-40* | 193 | A modern mahogany stick barometer and brass wall mount, marked A.M.Warne | £50-70* |
| 171 | Various volumes on war and football etc (two boxes) | £20-30* | 194 | Royal Albert Jemima Puddleduck with Foxy Whiskered Gentleman plus Beswick and other bird and animal ornaments | £20-40* |
| 172 | Various Swarovski and other boxed glass including Save Me Seals | £30-50* | 195 | An alabaster ceiling light shade | £30-50* |
| 173 | A copper table lamp with green glass shade, a chrome wall lamp with pink shade plus a copper planter | £40-60* | 196 | Leo Manders, oil on canvas of a lake and hut scene, 15" x 19" | £40-60* |
| 174 | John Adamson, oil on board of three horses dated 1974, 15" x 23" | £20-40* | 197 | Two rectangular silvered frame wall mirrors | £40-60* |
| 175 | A Victorian Ridgway Rhine pattern meat plate plus seven Masons Chartreuse plates | £20-40* | 198 | A framed print of a regency urn, 35" x 23" | £20-30* |
| 176 | A brass bound log box, wood plane plus a stoneware jug | £20-40* | 199 | A coloured print After Grant of a huntsman and hounds, 23" x 27" | £30-40* |
| 177 | A box of various tea wares and glass | £20-30* | 200 | A silver plated cockerel inkstand plus other silver plate | £30-50* |
| 178 | A circular carved oak barometer plus opera glasses etc | £20-40* | 201 | A pair of 19th Century continental bowls with floral, cherub and parrot decoration | £50-70* |
| 179 | Four Natwest pigs, animal ornaments plus Wedgwood china | £20-40* | 202 | A large Hummel figurine, girl with fawn, height 11" | £30-40* |
| 180 | A metal table lamp, spelter figure plus horse brasses | £20-40* | 203 | A Royal Doulton figurine, The Old Balloon Seller HN 1315 | £20-40* |
| 181 | A Marine compass | £20-40* | 204 | An 18th Century Derby porcelain teapot with floral decoration, gold anchor mark (cracked) | £20-40* |
| 182 | Print After Raeburn Macnae in carved Dewars Whisky frame plus a photo of George Vi | £30-40* | 204A | A William Moorcroft Flamminian ware vase on red ground, with impressed signature and stamp 'Made for Liberty & Co', Reg No.452777, height 9" | £100-150* |
| 183 | Various 78's including Danny Kaye, Bing Crosby, Winifred Attwell, Dean Martin etc | £20-40* | | | |
| 184 | A brown and floral carpet | £20-40* | | | |



***THIS LOT IS SUBJECT TO 17% COMMISSION PLUS VAT. PLEASE READ OUR TERMS AND CONDITIONS.**

- 205 Royal Doulton figurines, Janine HN 2461, Fair Lady HN 2193, Harmony HN 2824 and Katherine HN 4040 £30-50*
- 206 Royal Doulton figurines, First Waltz HN 2862, Fiona HN 2694 and Solitude HN 2810 £30-50*
- 207 Royal Doulton figurines, A Victorian Lady HN 728 and Top O The Hill HN 1849 £20-30*
- 208 An 18th Century Chinese bell tankard with blue and white landscape decoration, height 6" £80-120*



- 209 An 18th Century Nankin Willow pattern meat plate, width 13" £60-80*
- 210 A pair of 19th Century Dresden style double gourd vases and covers with figure painting (one cover as found), height 8" £60-80*
- 211 A 19th Century Cantonese lidded box plus a pair of spill vases (two as found) £30-40*
- 212 A Dresden miniature cup and saucer plus other continental porcelain £40-60*
- 213 A Lladro puppy dog plus small china including figurines £30-40*
- 214 A 19th Century German reclining man with flower basket, crossed swords mark, length 7" £60-80*
- 215 A Doulton & Co toilet pull plus a small medicine measure £20-40*
- 216 Three Meissen and Dresden cabinet cups and saucers plus two saucers £50-70*
- 217 A Victorian floral and butterfly engraved silver mounted claret jug, London 1874 £70-100*



- 218 An early 19th Century continental porcelain tea bowl and saucer with ship and house decoration £30-50*
- 219 A silver christening set, Art Nouveau serviette ring plus other items £20-40*
- 220 An William Comyns & Sons Ltd oval silver and tortoiseshell bird decorated trinket box, Birmingham 1908 £50-80*
- 221 A silver soup ladle and serving spoon, London 1794, makers Richard Crossley and George Wintle £70-90*
- 222 Seventeen various Georgian silver dessert spoons £60-80*
- 223 Twenty four Georgian and other silver spoons £50-60*
- 224 A George III silver fish slice London 1816, makers William Knight, Georgian silver marrow scoop, plus other silver cutlery £80-100*
- 225 Fourteen various Victorian silver forks £70-80*
- 226 Various silver and white metal cutlery (some as found) £70-90*
- 227 Boxed blue Parker pen, fruit knives, cutlery etc £30-50*
- 228 Four pairs of silver sugar tongs (two Georgian) £40-60*
- 229 A pair of silver candlesticks, Birmingham 1926, makers Miller Brothers. £20-30*
- 230 Three silver photo frames £30-50*
- 231 A mahogany box containing silver cruets, serviette rings etc £80-120*
- 232 Silver candlesticks and other items £40-60*
- 233 Various silver top jars plus other silver items £50-70*
- 234 A quantity of silver topped jars and bottles £50-80*
- 235 Eleven silver purses, card cases, vestas etc plus two plated £150-180*
- 236 A twelve piece silver fish knives and forks, Birmingham but varying dates, makers John Gilbert (one as found) £100-160*
- 237 Three silver and white metal bowls, one inset with George III coin £80-100*
- 238 A Martin, Hall & Co silver christening mug with engraved floral decoration, Sheffield 1886 £40-60*
- 239 A Victorian silver cream jug, Sheffield 1883, makers William Hutton & Sons plus a white metal floral chased beaker £80-100*

***THIS LOT IS SUBJECT TO 17% COMMISSION PLUS VAT. PLEASE READ OUR TERMS AND CONDITIONS.**

- 240 An embossed silver teapot, London 1863, makers Edward & John Barnard £200-250*



- 241 A silver trophy cup with Halesworth Horse Show Society, presentation inscription 1904, Goldsmiths & Silversmiths Co, London 1903 £140-160*



- 242 A tortoiseshell and silver mounted pot and cover plus heart shaped candlestick, retail mark Thornhill, Bond St £70-90*

- 243 Small silver items to include wine collars and labels plus a cut steel chatelaine with attachments £70-100*

- 244 Small silver and other items to include sovereign case, fruit knives, thimbles etc £50-70*

- 245 A silver photo frame, Georgian white metal toddy ladle plus other items £30-50*

- 246 A Victorian rosewood and brass bound traveling toiletry box, the hinged cover opens to reveal a green velvet lined interior, the underside of the cover reveals a concealed mirror, (glass missing) fitted eleven engraved and plain silver topped jars and boxes, each hallmarked for Thomas Diller, London 1844, steel manicure set (not complete) the box has a J Bramah lock with pins cut as to no key £300-500*



- 247 A pair of ornate gilt metal opera glasses in matching fitted purse plus a Shagreen compact and other items £50-70*

- 247A A silver hallmarked Asprey of London fox head bookmark, Chester 1929 £40-60*

- 247BA Georgian silver vinaigrette with floral engraved lid, Birmingham 1817, Samuel Pemberton makers mark (grill hinge broken) £40-60*

- 247CA silver Andrew Barrett & Son of 63 and 64 Piccadilly London card holder with monogram to front, Birmingham 1911 £50-70*

- 248 Various silver spoons, pipe etc £20-40*

- 249 A mother of pearl manicure case (as found), small silver items etc £20-40*

- 250 A South Arabian limestone upper half of a steele C 3rd to 1st Century B.C. £300-400*



- 251 An American 'Legends' Indian cold painted bronze, Unconquered Spirit £30-50*

- 251AA 19th Century brass candle snuffer on stand plus opera glasses £30-50*

- 252 A modern cold painted bronze of a seated Arab scholar £40-60*

- 253 A brass cased carriage clock £50-80*

- 254 A 19th Century bronze of oil lamp form with detachable cupid, on variegated marble base, length 8" £200-250*



- 255 A pair of floral cloisonne vases £40-60*

- 256 A pair of small 18th Century brass candlesticks with octagonal sockets, square stems and dished bases raised on three legs, 6 3/4" high £60-80*

- 257 A Danish Justa silver brooch marked sterling PCPLD, silver plated cutlery and Parker pens £30-50*

- 258 A travelling inkwell, magnifying glasses and a parasol handle £20-40*

- 259 A boxed Rotary wristwatch, wine labels etc £20-40*

***THIS LOT IS SUBJECT TO 17% COMMISSION PLUS VAT. PLEASE READ OUR TERMS AND CONDITIONS.**

- 260 A Cantonese carved ivory card case with figure and house decoration £80-120*



- 261 Various bone and ivory items including two fans plus other items £30-40*

- 262 Small items to include fountain pens, clasp knives etc £30-50*

- 263 A lady's white metal wristwatch set with paste stones, inset to dial marked Credit Suisse Platinum £20-40*

- 264 A Swiss Rodania gents sport 17 jewels wristwatch plus a lady's Swiss Roamer 17 jewels wristwatch £20-40*

- 265 A mixed group of items including six bangles, six rings one set with stone, a 9ct gold and silver wedding band etc £60-80*

- 266 An unmarked yellow metal framed shell cameo brooch (cracked) and an unmarked yellow metal target brooch (as found) £50-70*

- 267 A yellow metal mounted stick pin with painted fox head plus a white metal brooch in the form of a running dog £30-40*

- 268 An unmarked yellow metal oval double photo locket with large overlaid monogram on the front panel £150-200*



- 269 A silver pocket watch together with a small white metal fob watch with enamel decoration (as found) £30-50*

- 270 A mixed group of jewellery, 14ct gold bar brooch, three yellow metal brooches, a 9ct gold memorial pendant with lock of hair behind glass panel and a yellow metal mounted black stone set brooch £70-100*

- 271 Three 18ct gold studs together with two yellow metal studs £100-200*

- 272 An unmounted yellow metal necklace made up of large amethyst stones mounted in ornate borders with later added gold chain, together with a matching brooch and later fittings £200-300*



- 273 A large yellow metal target brooch (small hole) together with a pair of continental yellow metal spherical earrings £100-150*

- 274 A large oval silver double photo locket with engraved decoration £40-60*

- 275 Two small strings of pearls with 9ct gold clasps, two pairs of yellow metal mounted pearl earrings, one set with white stones and paste set brooch £30-40*

- 276 A pair of monogrammed 9ct gold cufflinks and two non-matching 9ct gold studs £80-120*

- 277 An unusual ornate carnelian stone cross with unmarked yellow decoration to centre and lock of hair under glass to reverse hung on a 9ct gold bar brooch, together with a yellow metal mounded yellow stone set cross £60-80*

- 278 A 9ct gold pencil with initials £70-90*

- 278A An amber and 15ct gold mounted Sampson Mordan & Co cheroot holder housed in a 9ct gold Sampson Mordan & Co case, hallmarks match the cheroot, case weight 42 grams (as found) £400-500*



- 279 An 18ct gold citrine and diamond set ring in closed setting with large shank, size S £150-250*



- 280 A mixed lot of yellow metal and 9ct gold including a 9ct gold and enamel artists rifles sweetheart brooch etc £50-70*

***THIS LOT IS SUBJECT TO 17% COMMISSION PLUS VAT. PLEASE READ OUR TERMS AND CONDITIONS.**

280A An 18ct pink sapphire and diamond ring complete with receipt for 2005

£200-250*



281 An 18ct White Gold double flower Diamond cluster ring, size O £250-300*



282 A continental 18ct gold fob watch (converted into wristwatch) on black leather strap with rose enamel detailing to the reverse (as found) £30-50*

283 A 9ct gold lady's wristwatch (case as found) and a lady's 18ct gold wristwatch on a 9ct gold expandable strap (as found) £80-120*

284 A mixed group comprising of two 9ct gold chains, an odd 9ct gold earring, a pair of 9ct gold screw back drop earrings etc £40-60*

285 Amber drop earrings in sterling silver mounts plus a white metal ring and brooch £30-50*

286 An 18ct gold fob watch with engraved case (monogram to reverse) with yellow metal key £60-80*

287 WITHDRAWN

288 A pair of yellow metal lorgnettes £40-60*

289 WITHDRAWN

290 WITHDRAWN

291 A 9ct gold hollow bangle stamped 9 (with some dents and small split) together with a yellow metal curb link bracelet with 9ct padlock heart shaped clasp £200-300*

292 A set of 9ct gold studs with a pair of oval cufflinks stamped 9ct in box (the cufflinks are badly dented) £30-50*

293 A mixed lot of jewellery consisting of a framed oval photo locket, yellow metal mounted claw pendant, yellow metal horse shoe shaped stick pin and white metal, white stone set cross £40-60*

294 WITHDRAWN

295 WITHDRAWN

296 A tray of costume jewellery including bead necklaces and other sundries £30-50*

297 A quantity of silver and white metal jewellery including rings, brooches, necklaces etc (most are as found) together with a string of glass beads, a mourning locket (as found) a yellow metal watch key (as found) etc £40-60*

298 Various items of costume jewellery £20-30*

299 A quantity of costume jewellery plus a silver ring and odd silver cufflink £20-30*

300 A Victorian rosewood box containing costume jewellery etc £30-50*

301 A collection of costume jewellery including brooches, necklaces, pearls etc and a quantity of wristwatches £30-50*

302 A wooden casket containing costume jewellery plus silver plated cutlery £30-50*

302A A mixed lot of costume jewellery including cufflinks and brooches, small quantity of silver jewellery including bracelets, part of a 9ct gold flat link chain, two beaded purses etc £40-60*

303 A Georgian silver dessert spoon plus other cutlery etc £20-40*

304 A silver cigarette case, Birmingham 1925, makers Harman Brothers plus other items including a Fleish and medallions £30-50*

304A WWI military pocket compass by Stanley of London, stamped to the front with military arrow No.113391, dated 1917 £30-40*

305 A gents Zenith dress watch £30-40*

306 Various Georgian and other silver spoons and cutlery (some as found) (one spoon plated) £40-50*

307 Nine various Georgian silver dessert spoons £40-60*

308 Nine various Georgian silver dessert spoons £50-70*

309 Twelve pieces of Victorian silver cutlery £60-70*

310 Eleven pieces of Victorian silver cutlery £60-70*



311 A pair of Victorian Staffordshire girls on goats plus a Wedgwood yellow and bat printed coffee cup and saucer £30-50*

***THIS LOT IS SUBJECT TO 17% COMMISSION PLUS VAT. PLEASE READ OUR TERMS AND CONDITIONS.**

- 312 A pierced circular dish marked Sterling plus various costume jewellery £30-50*
- 313 A Bohemian amber overlaid and floral painted goblet plus a tumbler with yellow house and animal vignettes £40-60*
- 314 A Clarice Cliff Mountain pattern conical sugar shaker, c1931, height 5 1/4" £400-600*



- 315 A 15ct gold bar brooch plus a dog brooch £30-50*
- 316 An 18ct gold band ring set with a small diamond, size R (wear to shank) £60-80*
- 317 A 22ct gold wedding band, size O £150-200*
- 318 A 9ct gold sapphire set ring plus one other 9ct gold ring £30-50*
- 319 Lady's and gents silver pocket watches plus three others £30-50*
- 320 Silver serviette rings, salts plus other items £30-50*
- 321 A pair of silver vases plus other items £50-80*
- 322 Small silver items including cigarette case, fruit knife and sherry label etc £30-50*
- 323 A cased set of six silver teaspoons and tongs plus a set of six coffee spoons £40-60*
- 324 A georgian silver bright cut shell caddy spoon, £40-60*
- 325 Six Georgian silver teaspoons plus two pairs of tongs £30-50*
- 326 A Victorian brass photo frame, three pieces of silver cutlery plus other items £30-50*
- 327 A 9ct gold amethyst and diamond ring, size L £30-50*
- 328 A 9ct gold three row diamond ring, size P £50-70*
- 329 An 18ct white gold diamond ring, size N £60-80*
- 330 A 9ct gold seven diamond ring, size D £30-50*
- 331 An 18ct gold sapphire and diamond half eternity ring, size K £80-100*
- 332 An 18ct gold five diamond ring, size J £75-100*

- 333 A 9ct gold and diamond cluster ring, size L £35-50*
- 334 An 18ct gold Gypsy ring set with small diamond, size K £50-70*
- 335 A continental yellow metal diamond and blue stone daily cluster ring, size O £55-70*
- 336 An 18ct gold Gypsy ring set with small diamond, size L (significant wear to shank) £65-80*
- 337 A butterscotch amber type bead necklace, approx 42gm £250-300*
- 338 A gent's Rolex Oyster "bubbleback" wristwatch with black California dial, non-matching serial numbers and has been partly restored therefore sold as seen £500-600*



- 339 A 1930's/40's "doctor's" watch with stainless boy's size case steel case, marked Breitling £250-300*
- 340 Various wristwatches including Nivada, Solvil et Titus, Cymaflex etc £40-60*
- 340A small gold brooch set with three old cut diamonds in a flower shape £60-80*



- 340BA gold watch chain with clip, t-bar and a 9ct gold swivel fob attached £230-270*
- 340CA gold necklace (as found) £350-550*
- 340DA large jade heart pendant, smaller jade pendant set with seed pearls plus one other brooch £30-50*
- 340E A gold plated Perry and Co propelling pencil, teething ring, photo locket etc £40-60*
- 340F A jewellery cabinet containing various costume jewellery £30-40*
- 341 A 22ct gold wedding band, size K £150-200*
- 342 A 9ct gold Masonic fob pendant £20-40*
- 343 A 22ct gold wedding band, size L £130-170*

***THIS LOT IS SUBJECT TO 17% COMMISSION PLUS VAT. PLEASE READ OUR TERMS AND CONDITIONS.**

- 344 A gents stainless steel Rolex Oyster Perpetual Datejust wristwatch with 18ct white gold bezel and white dial, Model No.116334, Serial No.6QS37385, comes with box and paperwork, date of purchase 11th October 2016 from Cox & Son Ltd of Great Yarmouth, comes with International Guarantee Card, as near new condition £4250-5000*



- 345 A 22ct gold wedding band plus an 18ct gold signet ring (as found) £70-100*
- 346 A large quantity of silver and white metal jewellery £60-80*
- 347 A 9ct gold mounted carved red coral brooch plus a large carved cameo of a woman, unmounted £60-80*
- 348 A group of mixed items of gold and yellow metal including shirt studs, chains, cufflink etc £70-100*
- 349 A large silver cross pendant £40-60*
- 350 A pair of yellow metal drop earrings with embossed and textured detail £40-60*
- 351 A pair of large gold hoop drop earrings, stamped 9ct to fittings £50-70*
- 352 A 15ct gold three stone diamond set brooch (one diamond missing) £80-120*
- 353 A 9ct gold Buren lady's wristwatch with inscription to back plate on black strap £50-80*
- 354 A lady's 9ct gold J.W. Benson of London wristwatch on 9ct gold strap £70-100*
- 355 Two 9ct gold lady's wristwatches, one is Timor, the other is Dimra £50-70*
- 356 A fancy link gold watch chain with t-bar and dog clip with swivel fob marked 9ct £300-400*
- 357 A yellow metal propelling pencil £40-60*
- 358 A large heavy 18ct gold wedding band, size Y £250-300*
- 359 An 18ct gold fob watch with enamel dial with foliage engraved case £120-180*



- 360 A 14ct gold fob watch (as found) £50-70*
- 361 A lady's 9ct gold Rolex wristwatch £100-150*
- 362 An unmarked gold memorial brooch set with five old cut diamonds to front and a panel for hair to the reverse (minor damage) £250-350*



- 363 An 1940's Rolex Tudor gent's wristwatch with stainless steel case (no strap or crown) £150-200*
- 364 An 18ct gold Hopwood of Colchester pocket watch (cracked glass and no second hand) £350-550*



- 365 A chain stamped 18K on a yellow metal photo locket pendant £30-50*
- 366 An 18ct gold chain (as found) £40-60*
- 367 An Art Nouveau style seed pearl, citrine and green set stone pendant of yellow metal chain £40-60*
- 368 A 9ct gold peridot set Art Nouveau necklace (as found) £40-50*
- 369 A pair of yellow metal coral drop earrings £60-80*
- 370 A 9ct gold garnet set cluster ring, size K £40-60*
- 371 A 9ct gold seed pearl and diamond set ring with woven hair insert (hair as found), size L £50-70*
- 372 A 9ct gold red stone set ring in a lozenge shape, size L £40-60*
- 373 A gold cameo ring, size W £30-50*
- 374 An unmarked and diamond set full eternity ring, size M £200-300*



- 375 An 18ct gold and woven hair ring, size M £60-80*

***THIS LOT IS SUBJECT TO 17% COMMISSION PLUS VAT. PLEASE READ OUR TERMS AND CONDITIONS.**

- 376 A gold band ring with inscription, dated 1801 £20-40*
- 377 A 9ct gold buckle ring (as found) and a 9ct gold ring shank (stone missing) £30-50*
- 378 A mixed group of seven pairs of gold and yellow metal earrings £80-120*
- 379 An Elkington silver gilt Parthenon with Athena, Birmingham 1922 £400-500*



- 380 A cased continental silver circular guilloche enamel table clock in two colours by E.Dreyfous, marked 950, Paris, London and New York marks £300-400*



- 381 A silver vesta with opening compartment to take photo, Chester 1895 £60-70*
- 382 A pair of 18th Century side ejector brass candlesticks on petal shaped bases, 7 1/4" high £80-100*
- 383 A pair of 18th Century seamed brass candlesticks with knopped stems and square bases having incurved corners, 6 3/4" high £70-100*
- 384 An early 18th Century side ejector seamed brass candlestick on circular base, 7 1/4" high £50-70*
- 385 A pair of framed silhouettes of a lady and gent, titled and dated 1855 £30-50*
- 386 A vintage African ivory plaque of a reclining man, 2 1/2" x 5" £20-40*
- 387 A 19th Century Meissen white glazed figure of a lady with flowers, height 9" £80-120*
- 388 An early pottery vase with elephant handle, height 2 1/2" £20-40*
- 389 Two gilt metal and translucent green enamel bug brooches £20-30*
- 390 A gold memorial brooch with panel to reverse decorated with blue enamel and seed pearl £100-150*

- 391 A gold 1789 George III half guinea (later mounted on yellow metal pin) £150-200*



- 392 A gold purple stone set Art Nouveau style pendant of yellow metal chain £40-60*
- 393 A 9ct gold RFC (Royal Flying Corps) brooch £30-50*
- 394 A 15ct gold green paste set brooch £50-70*
- 395 A gold stick pin in the form of a snake £50-70*
- 396 Three 9ct gold bar brooches including a sapphire set brooch £30-50*
- 397 A circular Chinese jade and gold brooch marked ZW15 £120-180*



- 398 A gold watch chain (10ct gold hallmark) with t-bar and clip £140-180*
- 399 A gold double strand foil back purple stone set bracelet £150-250*
- 400 A large 9ct gold turquoise and seed pearl set brooch £40-50*
- 401 Three bottles of 1989 Chateau Faget Saint-Estephe (one corked) £30-40*
- 402 Two bottles of 1996 La Boure Roi (labels missing) £20-40*
- 403 A boxed bottle of Gordon & Macphail single Islay port Ellen malt scotch whisky 1970 £200-300*
- 404 Isle of Wight glass scent bottles plus other items £50-80*
- 405 Three Meissen blue and white Ribbon plates £30-50*
- 406 Frank G.G. Carr, one volume Vanishing Craft, Country Life 1934, signed and inscribed £30-40*
- 407 Common Prayer in green velvet and metal binding, a folding camera and Wade whimsies £30-40*
- 408 Various pipes including Calabash, Bog Oak and carved wood etc plus a hand shaped wooden tamper and a box of various cigars £40-60*

***THIS LOT IS SUBJECT TO 17% COMMISSION PLUS VAT. PLEASE READ OUR TERMS AND CONDITIONS.**

- 409 A lacquer and mother of pearl smokers set, marked Mayor Inchon Korea £20-30*
- 410 Items of 18th Century Chinese blue and white china (mostly as found) £30-40*
- 411 Twelve 18th Century Chinese blue and white cups (mostly as found) £60-80*
- 412 A Victorian lilac ground jug with multiple relief cherub, winged horse, urn and grape vine decoration and mask spout, height 7" £20-40*
- 413 A mahogany cased mantel clock with Coventry Astral movement £50-70*
- 414 Three figurines, Lladro, Nao and Royal Doulton (one as found) £20-30*
- 415 Four framed Victorian pot lids, A Pair, Town Scene with Figures, Tavern Exterior Dancing and Peace £20-30*
- 416 A silver plated hoof inkwell, inlaid crib board plus a book of Common Prayer in Bagster gilt metal binding £40-60*
- 417 A metal stick figure made of screws bolts etc plus a copper nautical gymbal £40-50*
- 418 A Victorian cast brass stallion figure on wood base £80-100*



- 419 A pair of Japanese floral and encrusted vases £30-40*
- 420 A German terracotta plate with raised penny farthing cyclists and locomotive decoration, dia 6 1/2" £20-40*
- 421 A small Record plane, clasp knife and sundries £20-40*
- 422 A pair of brass candlesticks in the form of cherubs holding grapes perched on alligators £50-80*
- 423 Spode Diamond Jubilee Queen Elizabeth and Royal Worcester Diamond Wedding figurines £30-40*
- 424 A French porcelain figure painted and floral gilt metal mounted urn £20-40*
- 425 A green onion shaped bottle, height 8" £30-40*
- 426 An Edwardian inlaid mahogany mantel clock £45-55*

- 427 An Edwardian inlaid mahogany balloon clock £40-60*
- 428 A pair of blue overlaid glass vases £20-30*
- 429 A tortoiseshell two bottle inkstand (as found) £20-30*
- 430 A Macfarlane Lang Anvil biscuit tin £30-40*
- 431 A Daum globular decorated vase, height 7 1/2" £45-65*
- 432 A 19th Century Treen lidded urn with ivory ring handles and mounts £70-100*
- 433 A treacle glazed pottery jug in the form of a lion, length 8" £60-80*
- 434 A 19th Century brass candle box with gryphon, urn and warrior decoration £40-60*
- 435 A Russian painted coffee grinder £20-30*
- 436 Two steel moulds, one crown, one dated 1932 £30-40*
- 437 A George III rosewood tea caddy on bun feet with key, complete interior with original glass bowl £200-250*



- 438 An Art Nouveau brass blotter £20-40*
- 439 No Lot
- 440 A Royal Vale rose decorated tea set plus other china £20-30*
- 441 A brass table lamp, cutlery etc £20-40*
- 442 Various items of costume jewellery £20-30*
- 443 Copeland Spode plates, figurines etc £20-40*
- 444 Two Victorian Staffordshire groups £20-40*
- 445 A Chinese red floral rug, 60" x 36" £20-40*
- 446 A Satsuma bowl decorated with grim faced immortals, c1900 £40-60*
- 447 A cut glass cranberry oil lamp plus two others £40-60*
- 448 Two boxes of costume and continental jewellery £30-50*
- 449 A Persian red ground floral carpet, 102" x 78" £100-150*
- 450 A Persian rug with central medallion, 79" x 54" £50-80*

***THIS LOT IS SUBJECT TO 17% COMMISSION PLUS VAT. PLEASE READ OUR TERMS AND CONDITIONS.**

- | | | | |
|--|---------|---|-----------|
| 451 Copeland Spode Italian and New Chelsea black and gilt chinoiserie coffee sets | £30-50* | 474 Dowers Minor School Atlas plus two books of 19th Century anonymous hand written poetry and prose | £30-50* |
| 452 A reticulated white porcelain table lamp plus a pair of bases | £20-40* | 475 A set of six volumes, Cassells History of England, 3/4 calf | £30-40* |
| 453 A Tole ware chinoiserie wall pocket plus an Indian painted dome top casket | £30-40* | 476 Three jug and bowl sets, floral, white plus pink and white | £30-50* |
| 454 A 'vintage' Vec 500 electro acoustic guitar | £40-60* | 477 WITHDRAWN | |
| 455 Roy Perry (1935-1993), watercolour 'White Gables, Camberley', 14" x 18" | £30-50* | 478 WITHDRAWN | |
| 456 A pair of Victorian brass candlesticks (converted) | £20-40* | 479 WITHDRAWN | |
| 457 P.Hampden Hunt, aquatint 'La Promenade Publique', after P L Deboucourt, 14" x 23" | £20-40* | 480 A copper oil lamp with etched glass shade, coal helmet plus other items | £20-40* |
| 458 A thirty hour brass dial long case clock movement | £40-60* | 481 Victorian meat plates plus other china | £20-40* |
| 459 Audrey Miller, oil on board of a haystack near Bungay, 11" x 17" | £30-40* | 482 A glazed case of nautical items | £20-30* |
| 460 Four coloured hunting prints | £20-40* | 483 A Chinese pink and floral rug plus a camel decorated plus cat and dog wall hangings | £20-40* |
| 461 Two gilt framed wall mirrors plus a print of a lifeboat rescue | £20-40* | 484 A case of various silver plated items etc | £30-50* |
| 462 A circular Chinese black ground dragon decorated rug, dia 55" | £30-40* | 485 A tall black 1970's coffee set plus other china | £20-30* |
| 463 A microscope in case marked Gregory Bottley & Co | £40-50* | 486 Royal Worcester June Garland, Salisbury Jubilee Rose, Crown Regent and Copeland Spode Chinese rose tea and coffee wares | £40-60* |
| 464 Items of silver plate including teapots | £20-40* | 487 A floral jardiniere, Victorian Willow meat plate plus other items | £20-40* |
| 465 Items of silver plate including candlesticks, cutlery and an Art Deco lady's hip flask | £40-60* | 488 A lady's brown fur coat and jacket | £20-30* |
| 466 Various volumes on military subjects | £30-40* | 489 An Afghan rug, 69" x 50" | £20-40* |
| 467 Various volumes on birds and natural history | £30-50* | 490 Two cotton wall hangings, lions and desert scene with camels, 72" x 48" | £30-50* |
| 468 Various volumes including Enid Blyton Adventure Series reprints (three boxes) | £20-40* | 491 A large oak Gothic style bracket clock with painted enamel dial | £300-400* |
| 469 Local ordnance survey maps 1/2500 1927 and second edition (large quantity) | £50-80* | | |
| 470 Local ordnance survey maps 1/2500 1903-1907 editions (mostly 1905) | £50-80* | | |
| 471 Local ordnance survey maps 1/2500 plan TM | £50-80* | | |
| 472 Local ordnance survey maps 1/10560 1/10000 plus other odd maps | £30-50* | | |
| 473 Various volumes on theology, periodicals etc, 18th-19th Century (two boxes) | £20-40* | | |



- | | |
|---|----------|
| 492 A gilt metal table lamp with slag glass shade | £90-120* |
| 493 A pair of 19th Century Chinese blue and white ginger gars | £70-100* |
| 494 A pencil drawing of a man with horse with inscription 'Me and the Moke Sketched on Harbenden Common', 7" x 8" | £40-60* |

***THIS LOT IS SUBJECT TO 17% COMMISSION PLUS VAT. PLEASE READ OUR TERMS AND CONDITIONS.**

- 495 A pencil drawing of houses, inscription verso George Charles Haite 1855-1924, 6" x 4" £20-40*
- 496 A woolwork picture of a girl and lamb, 12" x 15" £20-30*
- 497 A Victorian Tunbridge ware banded walnut writing slope with fitted interior £60-80*
- 498 Two pairs of Edwardian open barley twist brass candlesticks 13" and 12" high £50-70*
- 499 A heavy Arts and Crafts brass and glazed porch lantern of hexagonal form, 11 1/4" high £40-60*
- 500 A large copper coal scuttle with swing and fixed handles by F.W.Hall & Sons, Norwich £60-80*
- 501 An American carved pine mantel clock £30-40*
- 502 An 1868 print depicting the Stockton and Darlington Railway Co with attached photos of George Stephenson, Edward Pease and Ira Newburn, 15" x 20" £100-150*
- 503 A large Indian circular brass plaque with embossed Zodiac signs and symbols, dia 30" £50-70*



- 504 An oval watercolour of a lake scene with figure and cattle, 6 1/2" x 8" £50-70*
- 505 A heavy glass fruit bowl with frosted floral decoration £30-40*
- 506 An ermine cape £20-40*
- 507 A plaster Madonna and child £20-30*
- 508 A river and landscape oil on board, 11" x 15" £60-80*



- 509 A frame of eight various silhouettes, six titled £40-60*
- 510 A cased snooker cue, The Stevenson Champion £30-40*
- 511 A Japanese blue and white hexagonal landscape stick stand £30-50*

- 512 Three vintage crocodile skin bags £60-80*
- 513 A 19th Century wooden handled pike gaff £40-60*
- 514 An African carved wooden figure and dagger £30-40*
- 515 An Eastern copper light shade with reticulated figure decoration £60-80*
- 516 A large Japanese glazed feather bird and floral display, internal dia, 46" x 30" £70-100*
- 517 A large Japanese glazed feather bird and floral display, internal dia, 46" x 30" £70-100*
- 518 An oil on canvas of a standing farm girl carrying a sheaf of wheat, monogrammed EB to bottom right, possibly a gallery label to the reverse with title and artist signature but indistinct, No.297, 35" x 27" £200-300*



- 519 Edna King, oil on canvas, Wethersett Village Street, 17" x 21" £20-40*
- 520 An oak stick stand containing sticks and brollies £20-40*
- 521 Two Singer and one Jones sewing machines £20-40*
- 522 Two oval mahogany wall mirrors plus three others £30-40*
- 523 A watercolour of a river and mill scene with swans, 17" x 24" £30-40*
- 524 W.J.Allingham, set of twelve oval stipple engravings of rural scenes in ornate gilt frames, 13" x 10" £200-300*



- 525 Cut and engraved wine glasses, a cut glass vase plus other glass (two trays) £30-50*
- 526 Various 19th Century coloured engravings plus other pictures £20-30*
- 527 Various boxed and other cutlery and silver plate £20-30*

***THIS LOT IS SUBJECT TO 17% COMMISSION PLUS VAT. PLEASE READ OUR TERMS AND CONDITIONS.**

FURNITURE AND COURTYARD

Lots 1001 – 1207

ALL MEASUREMENTS ARE APPROXIMATE

AFTER 5 WORKING DAYS, STORAGE CHARGES OF £2 + VAT PER LOT / PER DAY WILL APPLY TO ANY FURNITURE THAT HAS NOT BEEN COLLECTED

- 528 Dorothy Garrett still life oil on board, K.Curtis broadland scene oil on board plus other pictures £20-40*
- 529 Gordon Reeder river and cottage scene oil on board plus K.Curtis oil on board of an estuary view £20-40*
- 530 Eleanor De Winton floral study oil on canvas 1976, 19" x 15" £30-50*
- 531 A 19th Century mahogany banjo barometer by Soreili, London £70-100*
- 532 A Capo Di Monte style figurine of a mother and child, flower ornaments etc £20-40*
- 533 A Victorian Willow pattern meat plate, Booths Real Old Willow plus other china £20-40*
- 534 Two tapestry wall hangings, carpet beater, flags and a copper horn £30-50*
- 535 An umbrella by Holland of Birmingham with spiral ivory grip and silver mounts £40-60*
- 536 An Art Nouveau barometer, brass mounted harness plus other items £40-60*
- 537 A modern Acctim thirty day wall clock £20-40*
- 538 A Royal Doulton Slaters patent jardiniere plus a Brannam slip glazed vase £20-40*
- 539 A 19th Century German pottery brown vase with grape and vine decoration and child handles £30-50*
- 540 Eleven volumes, Works of Dickens, Household edition £20-40*
- 541 An Afghan rug, 78" x 39" £40-60*
- 542 A Lladro twin dove plus other bird ornaments, china and glass £20-30*
- 543 An Oliver black typewriter £20-30*
- 544 Various volumes of Observers books (two boxes) £40-60*
- 545 Various volumes on Country Life, poaching and miscellaneous (three boxes) £20-40*
- 546 A 19th Century inlaid tea caddy plus wooden sundries etc £20-40*
- 547 Five various carriage lamps £50-70*
- 548 Seventeen various collectors tins including Mayfair San Toy, Eltons Stone Ground Flour and Heatons Swiss Cream Caramels (two boxes) £60-90*
- 549 A Victorian 'Regina' musical photo album £30-50*
- 550 A Victorian blue and floral tea set plus a china horse £30-50*

- 1001 A dismantled Victorian pine wardrobe £50-80*
- 1002 A brass and iron standard lamp and two copper curbs £30-50*
- 1003 A modern chrome student's lamp £40-60*
- 1004 Two pine square occasional tables £30-50*
- 1005 A small pine two door cupboard with two doors below £30-50*
- 1006 Three post war aluminium suitcases £20-40*
- 1007 A modern pine sideboard with ceramic knobs with three doors and three drawers £50-80*
- 1008 A modern carved pine rocking horse on a stand £60-100*



- 1009 A pine and part cream painted chest of two short over two long drawers £40-60*
- 1010 A shabby chic mirror in the style of a French shutter £30-50*
- 1011 A pair of brass and iron andirons by Bennett £30-50*
- 1012 A Victorian inlaid mahogany Pembroke table with rounded flaps on square tapered legs and single drawer £30-50*
- 1013 A Victorian circular table on barley twist column and tripod support £40-60*
- 1014 A vintage cream and red Parkinson Cowen bottle gas cooker £30-40*
- 1015 A vintage enamelled G.E.C. electric oven (sold as a collected item) £20-40*
- 1016 A large painted six section theatre back drop of a dressing screen reputedly from a Drury Lane theatre £100-120*
- 1017 A Victorian carved mahogany chaise longue with green button back upholstery £100-150*

***THIS LOT IS SUBJECT TO 17% COMMISSION PLUS VAT. PLEASE READ OUR TERMS AND CONDITIONS.**

- 1018 An oak maple quality linen fold carved two door wardrobe school desk and rectangular side table £40-60*
- 1019 An Eastern brass top folding table and table top £20-30*
- 1020 An oak Globe Wernicke four section bookcase £150-250*
- 1021 An oak Globe Wernicke style sliding door bookcase £60-100*
- 1022 A Victorian rosewood graduated five tier whatnot on barley twist supports £60-80*
- 1023 A Victorian mahogany bow front chest of short over two long drawers £100-150*
- 1024 A child's chair, two string top stools, a plant stand, wine and occasional tables £20-40*
- 1025 An oval oak barley twist gate leg table £30-40*
- 1026 A Victorian metal bound trunk, a hat box and a small suitcase £20-30*
- 1027 A dark Ercol shelf back sideboard with four drawers and two cupboards below £50-70*
- 1028 A dark Ercol sideboard with glazed bookcase above £50-80*
- 1029 An 18th Century oak three panel coffer £200-400*



- 1030 A carved oak spinning chair and an ebonised octagonal occasional table £20-40*
- 1031 A dark Ercol two door cupboard with one drawer £30-40*
- 1032 A dark Ercol two door fall front TV cabinet £20-30*
- 1033 An oak single door wardrobe £20-30*
- 1034 A 19th Century inlaid mahogany two drawer side table on square tapered legs £50-70*
- 1035 A Victorian circular mahogany snap top table on turned column and tripod supports £50-70*
- 1036 A Victorian circular mahogany snap top table on turned column and tripod supports £40-60*
- 1037 A Georgian oak bureau with two short and two long graduated drawers on bracket feet £80-120*

- 1038 A Victorian shaped front inlaid rosewood with wall mountings £40-60*
- 1039 A pine three drawer two door kneehole pedestal desk £120-180*
- 1040 A painted pine blanket box, a wicker basket, an oak stool and a nest of two tables and one other £20-40*
- 1041 A child's chaise longue with cream button back upholstery £50-80*
- 1042 An oak nine drawer pedestal desk with leather top £150-200*



- 1043 A pair of oak Arts and Crafts style ladder back chairs with string seats £30-40*
- 1044 A 19th Century mahogany cottage dining table £20-40*
- 1045 A pair of Chinese carved hardwood elbow chairs with animal carved back and scroll ends £300-500*
- 1046 An Edwardian shell inlaid mahogany bureau £30-40*
- 1047 An oval floral barbola mirror £30-50*
- 1048 A pine corner cupboard £10-20*
- 1049 A Victorian painted cast iron pub table with mahogany top £60-80*
- 1050 A large pine corner cupboard with two astral glazed doors over two cupboard doors below £40-60*
- 1051 A substantial light pine kitchen larder with glazed doors, drawers and further cupboards below £130-160*
- 1052 A pine single mirrored door wardrobe £50-80*
- 1053 An oak Jacobean style chest of two short and five long drawers £120-180*
- 1054 A Victorian mahogany single door cupboard with flower and dragonfly carving £40-60*
- 1055 A dark oak two door wardrobe and an oak bureau £20-40*
- 1056 A pair of Edwardian carved mahogany mirror back wall hanging shelves £50-70*
- 1057 A Victorian carved mahogany chaise longue on turned legs £60-80*
- 1058 A vintage bamboo chest of three drawers, a bamboo magazine rack, a bamboo mirror and a bamboo hanging cabinet £60-80*

***THIS LOT IS SUBJECT TO 17% COMMISSION PLUS VAT. PLEASE READ OUR TERMS AND CONDITIONS.**

- 1059 A mahogany cheval mirror £30-40*
- 1060 An Edwardian single drawer side table on turned legs £30-50*
- 1061 An Eastern octagonal carved table and five standard lamps £20-40*
- 1062 A brown leatherette armchair with studwork £30-50*
- 1063 A modern electric reclining brown upholstered armchair £30-40*
- 1064 A narrow dark stained chest of ten drawers £50-80*
- 1065 An Eastern floor standing metal bound cabinet and an oak drop leaf table £30-50*
- 1066 A Victorian pine chest of two short and two long drawers £40-60*
- 1067 A 19th Century pine pot cupboard and a pine swing mirror £20-40*
- 1068 An oak three drawer bureau £20-40*
- 1069 A child's stickback chair, a gout stool and one other stool £20-30*
- 1069A A Victorian mahogany bow fronted chest of two short over two long drawers on feet £80-120*
- 1070 A Regency mahogany framed Bergere elbow chair £100-150*
- 1070A A red wood Chinoiserie coffee table with painted scene to top £30-40*
- 1071 A Victorian mahogany fender stool £30-50*
- 1072 A modern black leather three seater sofa £30-50*
- 1073 A modern black leather two seater sofa £30-50*
- 1074 A mahogany astral glazed bookcase £20-30*
- 1075 A modern dark oak coffee table with two door cupboard below £20-40*
- 1076 A 19th Century mahogany chest on chest of two short drawers and three long drawers over three long drawers £200-400*



- 1077 A cream painted three drawer bedside chest £30-50*
- 1078 A cream painted chest of two short drawers over two long drawers £50-80*

- 1079 A dark Ercol plate rack £20-30*
- 1080 A Victorian carved mahogany shaped front sideboard £60-80*
- 1081 An 18th Century carved oak plank chest £200-300*



- 1082 A Victorian pine chest of three drawers and a wicker Ali Baba basket £50-70*
- 1083 A mahogany folding chair and woolwork and tapestry fire screens £20-40*
- 1084 Two metal uplighters and two standard lamps £30-50*
- 1085 A Victorian mahogany bow front chest of two short over three long drawers on bracket feet £70-100*
- 1086 An oak white painted French style two door wardrobe with drawer below £50-80*
- 1087 A set of four oak stick back kitchen chairs £30-50*
- 1088 An Edwardian mahogany hanging two shelved cabinet £30-50*
- 1089 A Regency rectangular gilt framed pier glass with shell and urn mouldings and leaf decoration £250-350*
- 1090 An oak and mahogany cross banded chest of four short over three long drawers in a Georgian style £100-150*
- 1091 A Victorian leather top mahogany piano stool and a cast iron stick stand £40-60*
- 1092 An oak cheval mirror and a painted pine towel rail £30-40*
- 1093 A quarter size snooker table with cues and balls £30-50*
- 1094 A part cream painted modern sideboard with shelf back and two cupboards above £50-80*
- 1095 A 19th Century continental carved oak box seat settle with Medieval carved scene with dragon and ball carved arms £400-600*



- 1096 A stained rising top blanket chest on legs £30-50*

***THIS LOT IS SUBJECT TO 17% COMMISSION PLUS VAT. PLEASE READ OUR TERMS AND CONDITIONS.**

- 1097 A hexagonal plate glass display cabinet with five revolving shelves on chrome centre column with lock and key and illuminations £50-80*
- 1098 A mahogany Canterbury £30-50*
- 1099 A 19th Century oval mahogany snap top table on turned column and tripod support £40-60*
- 1100 A Victorian mahogany chest of two short and three long drawers on a plinth base £80-120*



- 1101 An oak white painted French style two door wardrobe with drawer below £50-80*
- 1102 An Indian woven bed with woven upholstery £30-50*
- 1103 An Edwardian oak roll top single pedestal desk with four drawers £60-80*
- 1104 A 1920's oak secretaire bookcase with lead glazed doors £30-40*
- 1105 A modern chest of three drawers and matching bedside chest £20-40*
- 1106 A modern light oak sideboard with six drawers and a matching bedside chest £30-40*
- 1107 A Regency gilt wood overmantel mirror with Greco-Roman lion chariot figure and angel decoration and Corinthian columns with decorative capitals £200-300*



- 1108 A wicker and metal two seat breakfast table and two matching chairs £30-40*
- 1109 A modern cupboard back sideboard £20-40*
- 1110 A nest of three oak table and a small drop leaf table £20-40*
- 1111 Two folding card tables, two string seat stools, a tile top occasional table and a square oak occasional table £30-40*

- 1112 An Edwardian mahogany nine drawer twin pedestal desk with leather top £60-80*
- 1113 A long PE bench £20-30*
- 1114 An Edwardian inlaid mahogany double bed head and footboard £30-40*
- 1115 A white painted wall mirror £20-30*
- 1116 A 19th Century oak box seat high back settle £80-120*
- 1117 A small 18th Century oak plank chest £30-50*
- 1118 A Victorian mahogany hall chair, a woolwork firescreen and a vintage white painted wicker basket on a stand £20-40*
- 1119 A Victorian secessionist flame mahogany chest of four short over three long drawers with 1873 presentation carving £200-300*



- 1120 Two 19th Century hard seat Suffolk style chairs £30-50*
- 1121 A narrow chest of six drawers and a single wardrobe £20-30*
- 1122 A mahogany snooker scoreboard marked F.H. Ayres, 111 Aldersgate St, London EC £60-80*
- 1123 A 19th Century oak table on turned column support (as found) £50-70*
- 1124 Four reproduction wood carved street name signs £20-40*
- 1125 An 18th Century oak mule chest with three carved panels and two drawers below £230-280*
- 1126 An oval oak gate leg table £30-50*
- 1127 An 18th Century dark oak plank chest, front panel inscribed 1710 £200-300*
- 1128 A Chinese carved hardwood three tier occasional table £80-120*
- 1129 Two wooden standard lamps, one on a Corinthian column £20-30*
- 1130 A modern pine farmhouse kitchen table £40-60*
- 1131 An oak elbow chair with terracotta floral button back upholstery £30-50*
- 1132 A set of six Edwardian dining chairs with red leatherette upholstery £30-50*

***THIS LOT IS SUBJECT TO 17% COMMISSION PLUS VAT. PLEASE READ OUR TERMS AND CONDITIONS.**

- 1133 A 1930's reclining elbow chair, an oak tea trolley and an oak smokers chair
£20-40*
- 1134 A modern mahogany eight drawer desk with leather inlaid top
£20-40*
- 1135 A Victorian metal bound dome top trunk
£20-30*
- 1136 A reproduction mahogany serving sideboard on fluted legs with brass superstructure
£40-60*
- 1137 A modern light oak single drawer side table, a string top Glastonbury style stool and a nest of tables
£30-40*
- 1138 A nest of three mahogany tables, a white painted stool, an oak book rack, a nest of two tables and an inlaid mahogany swing mirror
£30-50*
- 1139 A pine cheval mirror and an oak coffee table
£30-40*
- 1140 A cream upholstered wing back armchair
£60-80*
- 1141 An Edwardian oak pedestal roll top desk
£80-120*



- 1142 A Victorian mahogany shaped top stretcher table
£60-80*
- 1143 A mahogany cylindrical bedside chest
£30-40*
- 1144 A Regency rope back carver chair and one other ebonised with cane seat and back
£20-30*
- 1145 A mahogany nine drawer pedestal desk
£50-80*
- 1146 An oak two door cupboard with pigeon hole interior
£40-60*
- 1147 A 19th Century oak folding top tea table
£30-50*
- 1148 A Victorian carved mahogany nursing chair in gold button back upholstery
£50-80*



- 1149 A teak sunlounger/day bed frame
£30-40*
- 1149A A cast iron fire grate and irons etc
£20-40*
- 1150 A wine rack for 48 bottles of wine
£20-40*
- 1151 A garden bench with metal ends
£20-30*
- 1152 A pair of Head Radial racing skis, a pair of Stratos Rossignal skis, a pair of poles and a pair of boots
£20-40*
- 1153 A sack barrow, tin trunk and contents etc
£20-40*
- 1154 A pair of cast iron figure andirons and two skillets
£30-50*
- 1155 A set of four teak garden chairs
£30-50*
- 1156 A square iron table with four iron chairs
£50-70*
- 1157 A brass firescreen and an iron fender
£20-30*
- 1158 A modern white painted two shelved single door cupboard
£20-40*
- 1159 A reproduction inlaid mahogany shaped front sideboard
£20-30*
- 1160 Two modern drop leaf tables (one Nathans) and a Nathan Furniture blanket box
£30-40*
- 1161 A selection of Nathan Furniture, cupboard with four drawers and two doors, a matching two door shelved cupboard and curved corner cupboard
£30-50*
- 1162 A pair of Edwardian inlaid mahogany bedroom chairs and four others
£20-30*
- 1163 A dark Ercol dining table and six chairs including two carvers
£80-120*
- 1164 A set of eight 19th Century mahogany carved rope back dining chairs with red leather and brass studded upholstery on turned legs, including two carvers
£100-150*
- 1165 A mahogany extending dining table with two additional leaves
£70-100*
- 1166 A George III mahogany dining chair with shell carved cabriole legs and pad feet and a set of four Georgian mahogany dining chairs
£100-150*
- 1167 An oval mahogany gate leg table on turned legs and pad feet
£200-250*
- 1168 A Bergere rocking chair, a 19th Century hard seat chair, a nest of two modern tables and one other
£30-40*
- 1169 A reproduction mahogany corner cabinet
£20-40*

***THIS LOT IS SUBJECT TO 17% COMMISSION PLUS VAT. PLEASE READ OUR TERMS AND CONDITIONS.**

- 1170 A stained oak Serpentine chest of three drawers £30-40*
- 1171 A mahogany linen press over five drawers (no cornice) £20-30*
- 1172 An extending oval oak dining table on turned and carved legs with one extra leaf £40-60*
- 1173 A set of four 19th Century elm bar back chairs £30-50*
- 1174 A modern red leather button back armchair £40-60*
- 1175 A modern pine kitchen table and a set of four pine chairs £60-80*
- 1176 A mango wood pedestal desk with three drawers and a cupboard £30-50*
- 1177 A copper coal helmet, brass planter and a small mirror contained in a wooden crate £30-40*
- 1178 A pair of modern white painted bedside chests and a white painted bathroom cupboard £20-40*
- 1179 A white painted oval folding top dining table £20-40*
- 1180 A set of four oak barley twist dining chairs and two non matching carvers £50-80*
- 1181 A set of six carved oak dining chairs with bobbin turned stretchers £60-100*
- 1182 A Victorian oak extending dining table with two additional leaves, on heavy bulbous carved legs, seats twenty £200-400*
- 1183 A Victorian mahogany lady's kneehole desk with five drawers on turned legs £100-150*



- 1183A A 19th Century mahogany luggage stand £70-90*
- 1184 A modern cane open five shelved unit, an Edwardian shaped top occasional table and a green loom chair £30-40*
- 1185 A nest of three Edwardian inlaid mahogany occasional tables and two oak nests of three tables £20-40*
- 1186 A pine single drawer table on turned legs £80-120*
- 1187 Four beechwood chairs including two carvers and a formica top table £30-40*

- 1188 A nest of three walnut occasional table, an ebonised mirror back wall shelf and a brass banded and cross banded table £30-50*
- 1189 A dark Ercol nest of one coffee and two small tables under £30-40*
- 1190 A 19th Century inlaid shaped top table on cabriole legs with single drawer £50-70*
- 1191 A 1920's oak barley twist gateleg table and a cane seat bedroom chairs £30-40*
- 1192 A Victorian mahogany bow front chest of four long drawers on bracket feet £100-150*
- 1193 A Victorian mahogany three tier whatnot £40-60*
- 1194 A carved mahogany torchere £20-40*
- 1195 A 1950's G Plan sideboard £30-50*
- 1196 A maroon leather upholstered swivel desk chair £40-60*
- 1197 A mahogany top table on Victorian carved column and base £40-60*
- 1198 Five various dining chairs £20-40*
- 1198A An Edwardian inlaid mahogany corner tub chair £40-60*
- 1199 An Edwardian mahogany two door china display cabinet with floral inlays and plate glass shelves, with Chubb of London lock £200-300*



- 1200 A 19th Century mahogany folding top tea table on turned legs £60-80*
- 1201 A walnut occasional table, three others in oak, pine and mahogany and a corner table £20-30*
- 1202 Two white painted two shelved bookcases £20-40*
- 1203 An oak five shelved bookcase, a painted chest of drawers and shelves £20-30*
- 1204 A modern upright piano by Zender plus a mahogany stool £50-70*
- 1205 A wheelback chair, an oak barley twist table, a commode and two tapestry frames £20-30*
- 1206 A beige upholstered wingback armchair £40-60*
- 1207 An oak floor standing single door corner cupboard £30-50*

***THIS LOT IS SUBJECT TO 17% COMMISSION PLUS VAT. PLEASE READ OUR TERMS AND CONDITIONS.**

GENERAL CONDITIONS OF SALE

- 1 THE BUYER** - The highest bidder acknowledged as such by the auctioneer will be the buyer. If any dispute arises, the auctioneer shall have absolute discretion to settle the matter. The auctioneer shall rule the bidding and no bid shall be retracted. The auctioneer reserves the right to refuse any bid. The bidder in the room who is successful in purchasing any lot or lots is entirely responsible for paying for such lot or lots in accordance with our general conditions of sale. Purchases made on behalf of a third party are entirely the responsibility of the bidder in the room. The auctioneer reserves the right to bid on behalf of the vendors for any lot and to withdraw, consolidate or divide any lot or lots.
- 2 REGISTRATION** - To assist the progress of sale, all prospective buyers must register their name and address at reception and collect a bidding number before the sale commences. Should there be any doubts as to price or buyer, please draw the auctioneer's attention to it immediately.
- 3 BUYER'S PREMIUM** - A buyer's premium of 17% plus VAT at the standard rate of the hammer price is payable on each lot.
- 4 VENDOR'S COMMISSION** - Our standard Vendor's commission of 14% plus VAT will be charged up to £1000 - rate negotiable prior to sale. In addition, each lot will be subject to a lotting fee of £3 plus VAT.
- 5 PURCHASE VIA LIVE BIDDING** - Any lots purchased via the saleroom.com live auction service will be subject to an additional 3% commission charge plus VAT at the current rate imposed on the hammer price. In completing the bidder registration on www.the-saleroom.com and providing your credit card details and unless alternative arrangements are made with Durrants you hereby agree to the following terms:
 - a) Durrants are authorised to charge the credit/debit card given in part or full payment including all fees for items successfully purchased in the auction via the sale-room.com, and
 - b) You are authorised to provide these credit/debit card details to Durrants through www.the-saleroom.com and agree that Durrants are entitled to ship the goods to the cardholder name and address provided in fulfilment of the sale.
- 6 VALUE ADDED TAX** - Lots on which Value Added Tax may be payable by the buyer on the "hammer price" are indicated in the catalogue by a symbol beside the lot number. The buyer shall pay any VAT which may be due on any amounts owed by the buyer under these conditions of sale at the rates prevailing on the day of the auction.
- 7 AUCTIONEERS MARGIN SCHEME** - The Auctioneers Margin Scheme allows auctioneers to sell items without VAT on the hammer price. Under the margin scheme an amount equivalent to VAT at the current rate is added to the buyer's premium. This amount cannot be refunded. The VAT element will not be shown separately on the buyer's invoice.
- 8 PAYMENTS**

Purchaser - Our methods of payment are with bank transfer, cash, debit or credit card (in person only) or by cheque supported by a valid guarantee card or bankers reference. All purchases must be paid in full on the day of the sale before any lot is removed from the premises. No goods will be released to buyers unknown to the auctioneers without adequate reference or before their cheques have cleared. Anyone who, for whatever reason, is unable to pay for their goods on the day of the sale must inform the Saleroom Manager as to when payment will be made. There is a 2% surcharge on credit card payments.

Vendor - Vendors will normally receive proceeds of sale 10 working days after. However, where individual consigned Lots have sold for £500 or above Durrants reserve the right to hold payment until we have been paid by the purchaser. We also reserve the right to rescind a sale, if it is clear that having pursued all the usual channels Durrants are unlikely to receive payment on the Lot in question. In such circumstances, the Lot(s) involved will be reoffered in a later Sale with the sale reserve (if applicable).
- 9 ATTRIBUTION AND CONDITION OF LOTS** - Every effort is made to ensure the accuracy of any statement as to authorship, attribution, origin, date, age, provenance and condition of any lot whether or not such statement forms part of the description of any such lot. Whether any such statement is made orally or in the catalogue it is an expression of opinion. Each buyer by making a bid for a lot acknowledges that he has satisfied himself fully as to the attribution and condition of the lot. If any damage is done to any lot at the viewing or before, during or after the sale, such damage shall be made good by the person committing such damage, principals being responsible for the acts of their servants, such damage to be assessed by the auctioneers. Written condition reports are available for all Lots upon request. Buyers that do not request condition reports forfeit their right to a refund, except where we are in breach of Contract.

Verbal condition reports will not be given. The latest that a condition report will be e-mailed or posted is the day immediately before the sale.
- 10 ATTRIBUTION OF PICTURES** - (Condition 7 also refers).
 - a) The forename(s) (or asterisks where not known) and surname of the artist indicates in our opinion a work by the artist
 - b) The initials of the forename(s) and the surname of the artist indicates in our opinion a work of the period of the artist which may be wholly or in part his work.
 - c) The surname of the artist indicates in our opinion a work of the school or by one of the followers of the artist or in his style and of uncertain date.
 - d) Bears signature indicates in our opinion that this is not the signature of the artist.
 - e) All other terms are self-explanatory.
- 11 OWNERSHIP OF PURCHASES** - The ownership of the lot(s) purchased will not pass to the buyer until the buyer has paid the auctioneers in full the total amount due and the auctioneers have applied such payment to the lot.
- 12 TRANSFER OF RISK** - Each lot shall be at the purchaser's sole risk from the fall of the hammer and shall be sold with all faults and imperfections. The purchaser is deemed to have inspected the lots and satisfied himself as to their condition. The liability to insure any purchased Lot shall pass from the auctioneer to the purchaser on the fall of the hammer.
- 13 COMMISSION BIDS** - If instructed, the auctioneers will execute bids and advise prospective purchasers. This service is free. Lots will always be purchased as cheaply as is allowed by such other bids and reserves as are on the auctioneer's books. In the event of identical bids, the earliest will take precedence. There must always be a maximum limit indicated, i.e. the amount to which you would bid if you were attending the auction yourself. "Buy" or unlimited bids will not be accepted. Commission bids placed by telephone are accepted at the client's risk. We do accept commission bids by facsimile. We urge our clients to place such commission bids within one hour of the close of the view day.
- 14 TELEPHONE BIDS** - Requests for telephone bidding must be registered with the Saleroom Manager within one hour of the close of the view day. It may not be possible to accept requests on sale days. Written confirmation of such bids from persons unknown to the auctioneers must be received before the commencement of the sale. Whilst every effort will be made to execute telephone bidding, the auctioneers cannot be held responsible for any default or neglect in connection with this service. All such arrangements therefore are made entirely at the prospective buyer's risk.
- 15 COLLECTION OF GOODS** - At the purchaser's sole cost and expense, the purchaser shall collect the lot(s) purchased not later than 12 mid-day after the day of the auction, not before payment to the auctioneers of the total amount due. After 5 working days, storage charges of £2 + VAT per day per lot will apply to any goods that have not been collected.
- 16 POSTAGE / SHIPPING** - Goods will not be released to couriers unless they are delivering to the address that the buyer has used for registration. Couriers are instructed not to take alternate delivery instructions once dispatched
- 17 COMPLIANCE** - Upon failure of any purchaser to comply with any of the above conditions any money deposited by the purchaser in part payments shall be forfeited to the owner of the lot, he paying there from, all just expenses. Any lot not paid for within 1 month of the purchase date shall be resold by public auction or private contract and the deficiency (if any) arising from such a resale together with all expenses attending the same shall be made good by the defaulter at this sale who shall have no claim to any surplus which may arise on a resale.
- 18 PRE SALE ESTIMATES** - Given by the auctioneers or a member of their staff are their opinion as to what they consider any particular lot is likely to realise. However any lot may sell at a figure less than the lower estimate and for more than the higher estimated figure. The auctioneers and their staff reserve the right to alter their pre-sale estimates, either upwards or downwards, on any lot at any time, up until such time as the lot is offered for sale.
- 19 RESERVES** - The auctioneers and vendors reserve the right:
 - a) To remove the reserve completely from a previously reserved lot at any time up until it is offered for sale.
 - b) To place a reserve on a previously unreserved lot at any time up until it is offered for sale.
 - c) To alter a reserve, either upwards or downwards, on any lot at any time up until it is offered for sale.
 - d) Should any item fail to sell at the reserve price on the day of the Auction they will be subject to commission of 3% of the Reserve Price, subject to a minimum fee of £5 plus VAT.
- 20 THIRD PARTY LIABILITY** - Every person on the auctioneers' premises before, during or after a sale or at any other time, shall be deemed to be there at their own risk and shall have no claim against the auctioneer in respect of any injury they may sustain or any accident which may occur.
- 21 ANY NOTICES** - Any notices that may be displayed from time to time by the auctioneers in the sale ground or salerooms shall be deemed to form part of and be included within the general conditions of sale.
- 22 MONEY LAUNDERING REGULATIONS** - In order to comply with current anti-money laundering legislation we are unable to accept cash payments over £8,000. Any purchaser wishing to pay cash for any purchase over £1,000 may be asked for identification e.g. Passport or photo driving licence.
- 23 DROIT DE SUITE ROYALTY CHARGES** - In essence this charge will be made to the purchaser of any work of art that has been produced by a living artist or for a period of up to 70yrs after the artist's death, on lots with a hammer price more than the UK sterling equivalent of €1,000. Please refer to www.dacs.org.uk for further rules and current exchange rates. The royalty charge will be added to purchase invoices and must be paid before items can be cleared. All Royalty charges are paid to the Design and Artists Copyright Society (DACS) by the Auctioneers and no handling costs or additional fees with respect to these charges will be retained by the Auctioneer.
- 24 RICS REGULATION**
 - a) All Clients monies are paid into our Auction Clients Account with Barclays Bank PLC Norfolk Business and Agricultural Corporate Banking Centre, Norwich, Norfolk (any interest accrued monies held will be retained by Durrants)
 - b) Durrants operates an RICS approved complaints policy, details can be found on our website www.durrants.com
- 25 RESCISSION** - Notwithstanding any other terms of these Conditions, if within fourteen days of the date of sale Durrants receive from the buyer of any lot notice in writing that in his view the lot is a deliberate forgery and the lot is returned to them in this period in the same condition as at the time of sale and produces written evidence, the burden of proof to be upon the buyer, satisfies Durrants that considered in the light of the entry in the catalogue the lot is a deliberate forgery then the sale of the lot will be rescinded. The purchase price will be refunded once the sum has been returned to Durrants by the Seller.

If before the proceeds of the sale have been paid to the Seller Durrants receives notice from the buyer that, in the buyers view the sale should be rescinded and Durrants agrees with that view, Durrants will rescind the sale and refund to the Buyer any amount paid to Durrants in respect of the Lot, and if such notice is received after payment of the proceeds of this sale the Seller will on notice reimburse Durrants to the full amount of the sum refunded to the Buyer.
- 26 REPRODUCTIONS** - Owing to the large number of Third Reich and other uniforms and accoutrements being used for films, television and plays, it becomes increasingly difficult to ascertain the authenticity of certain pieces. We catalogue all items as seen, and offer no guarantee as to their authenticity. The terms 'bronze', 'silver' and 'gold' refer to the grades in which medals, badges, etc., were awarded and not to their composition. Items described as (PATTERN) are an example of the described item with no guarantee of age or authenticity

BUYER REGISTRATION FORM

Please enter the information required below before taking it to a member of staff. Please ensure that you have a suitable form of identification to verify the information you are giving, e.g. driving licence, utility bill etc. Once you have done this you will be issued with a card and this will have your buyer's number on it

Mr / Mrs / Miss / Other:	_____	Initials:	_____	Surname:	_____
Company	_____				
Address	_____				

Tel:	_____				
Mobile:	_____				
E-mail:	_____				
Credit / Debit Card No:	_____				
Start Date:	_____	Expiry Date:	_____	Security Code:	_____

Where a buyer is registering for the first time and leaving a commission bid the auctioneers reserve the right to undertake a credit card transaction using the details which have been supplied if the purchase is successful.

For Office Use Only
Buyers Registration Number: -

DURRANTS AUCTION ROOMS

The Old School House, Peddars Lane, Beccles, Suffolk, NR34 9UE

Tel: 01502 713490

Email: auctionrooms@durrants.com

Web: www.durrants.com



DIRECTIONS

FROM A12/A15 (SOUTH)

On entering Beccles, at the first set of traffic lights turn right into Peddars Lane. The Auction Rooms are 200 metres along the road on your right.

FROM A143/A146 (BURY ST EDMUNDS & NORWICH)

Approaching Beccles, at the McDonald's roundabout, go straight over, then take the first right via Gillingham over the bridge into Beccles. Follow the road past the new Tesco, go straight at the first set of traffic lights, right at the second and the Auction Rooms are 100 metres on your left.

FROM A146 (LOWESTOFT)

At the Worlingham roundabout bear left through Worlingham. At the first set of lights go straight over, at the second turn left and the Auction Rooms are 100 metres on your left.

WWW.DURRANTS.COM

BECCLES
01502 712122
10 New Market
Beccles
Suffolk
NR34 9HA

DISS
01379 642233
Pump Hill House
2b Market Hill
Diss, Norfolk
IP22 4WH

HARLESTON
01379 852217
32-34 Thoroughfare
Harleston
Norfolk
IP20 9AU

SOUTHWOLD
01502 723292
98 High Street
Southwold
Suffolk
IP18 6DP

HALESWORTH
01986 872553
12 Thoroughfare
Halesworth
Suffolk
IP19 8AH

AUCTION ROOMS
01502 713490
The Old School House
Peddars Lane
Beccles, Suffolk
NR34 9UE

MAYFAIR
0870 112 7099
Cashel House
15 Thayer Street
London
W1U 3JT