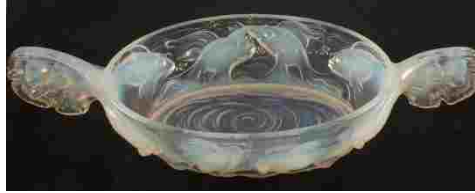


DURRANTS

SINCE 1853

RESIDENTIAL
AGRICULTURAL
COMMERCIAL
ON SITE AUCTIONS
PROPERTY MANAGEMENT
BUILDING CONSULTANCY
AUCTION ROOMS
HOLIDAY COTTAGES



Friday 16th December 2016

Antiques and Fine Art commencing 10.00am

Furniture plus Courtyard commencing at 1.00pm



**SPECIALIST SALE OF ART DECO GLASS,
ANTIQUES AND FINE ART WITH JEWELLERY,
SILVER AND FURNITURE**

Tel: 01502 713490 Fax: 01502 711039

WWW.DURRANTS.COM

Catalogues

£3.00

RICS ACCREDITED VALUERS AND AUCTIONEERS

NOTES FOR PROSPECTIVE PURCHASERS

DURRANTS AUCTIONEERS AND VALUERS

Durrants' experience of Auction Sales dates back to 1853 and since that time we have continued to undertake chattel sales and valuations throughout Norfolk and Suffolk.

From our Auction Rooms at Peddars Lane, Beccles we conduct Fine Art and Antique Auction Sales every month, interspersed with Specialist Sales.

Our team of Valuers and Auctioneers undertake valuations for probate and insurance purposes and provide advice for sale and family division.

RICS accredited Valuers and Auctioneers

OUR SERVICE

With our own salerooms, experienced staff and removal vehicles we are able to offer a comprehensive and cost effective service to executors, solicitors and private clients.

- On site inspections at short notice by appointment
- Experienced valuers throughout the group
- Verbal advice or comprehensive reports
- Professional and confidential service
- Specialist valuations of furniture, ceramics, pictures, silver, jewellery, clocks and watches, books, toys and dolls, stamps, postcards, coins, Militaria, swords, medals Sporting Guns and Antique Firearms

Durrants has offices in Beccles, Halesworth, Southwold, Harleston and Diss. Each has a team of experienced Chartered Surveyors and Estate Agents, offering a wide range of services encompassing Agricultural, Residential, Commercial and Investment properties. We also have a specialist Planning and Design Group.

FIREARMS

We have full R.F.D. capabilities enabling us to sell on your behalf all items that require licences. Our registered Firearms Dealership Number is Suffolk 252. We are always happy to help with any firearm queries, legal requirements or valuations.

VIEWING

The Viewing days for the Friday 16th December Antiques and Fine Art with Jewellery and Silver are:-

Tuesday 13th December between **9am and 5pm**

Wednesday 14th December between **9am and 5pm**

Thursday 15th December between **9am and 7.30pm**

The morning of the sale from 8am

SALE DAY TIMETABLE

The antiques sale starts at 10.00am in the upstairs saleroom at Lot 1.

There will be no lunch break during the course of the day.

Clearing is allowed during the sale in the upstairs saleroom.

The furniture sale starts at 1pm at Lot 1001 in the ground floor saleroom.

SUMMARY OF CATALOGUE

China, Glass, Clocks, Pictures, Wood, Metal,

Pottery and Porcelain, Objects Vertue, Silver,

Jewellery and Watches

Furniture and Courtyard

Missing Lot numbers – 26, 125, 157, 283 and 1115

Lots 1 – 556

Lots 1001 - 1155

For further images please visit www.durrants.com or www.the-saleroom.com/durrants

FORTHCOMING EVENTS

**FREE VALUATIONS AND TAKING IN OF GOODS MONDAY TO FRIDAY
BETWEEN 9AM - 5PM (EXCEPT SALE DAY) AND ALSO EVERY SATURDAY
MORNING BETWEEN 9AM - 12 NOON**

AUCTION CALENDAR 2017

Friday 20th January – Antiques and Fine Art with Jewellery and Silver

Friday 10th February - Antiques and Fine Art with Jewellery and Silver

Thursday 23rd and Friday 24th February – A two day sale of Toys, Collectables, Militaria, Medals, Air Guns, Sporting Guns and Firearms etc

Friday 10th March - Antiques and Fine Art with Jewellery and Silver

Friday 7th April - Antiques and Fine Art with Jewellery and Silver

Friday 28th April - Antiques and Fine Art with Jewellery and Silver

Friday 19th May - Antiques and Fine Art with Jewellery and Silver

Thursday 1st and Friday 2nd June - A two day sale of Toys, Collectables, Militaria, Medals, Air Guns, Sporting Guns and Firearms etc

Friday 16th June - Antiques and Fine Art with Jewellery and Silver

Saturday 24th June – Sporting and Antique Guns of Distinction with Related Items and Taxidermy

Friday 7th July - Antiques and Fine Art with Jewellery and Silver

Friday 28th July - Antiques and Fine Art with Jewellery and Silver

Friday 18th August - Antiques and Fine Art with Jewellery and Silver

Thursday 31st August and Friday 1st September - A two day sale of Toys, Collectables, Militaria, Medals, Air Guns, Sporting Guns and Firearms etc

Friday 15th September - Antiques and Fine Art with Jewellery and Silver

Friday 6th October - Antiques and Fine Art with Jewellery and Silver

Friday 27th October - Antiques and Fine Art with Jewellery and Silver

Friday 17th November - Antiques and Fine Art with Jewellery and Silver

Thursday 30th November and Friday 1st December – A two day sale of Toys, Collectables, Militaria, Medals, Air Guns, Sporting Guns and Firearms etc

Friday 15th December - Antiques and Fine Art with Jewellery and Silver

These dates may be subject to change – please contact us during the year to ensure you don't miss out!

VIEWING

Antique and Fine Art Sales are on view the week of the sale - Tuesday and Wednesday 9am-5pm and Thursday 9am-7.30pm, or by appointment.

Toy, Collectable and Militaria Sales are on view the week of the sale - Tuesday 9am-5pm, Wednesday 9am-7.30pm and Thursday 8am-10am and 3pm-7.30pm
(no viewing when the auction is in progress on the Thursday), or by appointment.

All Auction catalogues, photographs, particulars and results are available online at www.durrants.com
We are also happy to carry out additional and one off sales on site or at our Sale Rooms by arrangement.
House clearances by arrangement.

For further information please call:

Mark Whistler ANAVA Auction Rooms Manager,
Specialist Militaria, Firearms and Furniture Valuer
01502 713490 or mark.whistler@durrants.com

Beverley Baker Assistant Manager and
Head of Administration
01502 713490 or auctionrooms@durrants.com

Robert Pearse Valuer for Stamps, Postcards,
Collectables, Ceramics, Books and Watches
01502 713490 or auctionrooms@durrants.com

James Felgate MNAVA Valuer and Photographer
01502 713490 or auctionrooms@durrants.com

Anna Paulding ANAVA Auction Administrator /
House Clearance Coordinator
01502 713490 or auctionrooms@durrants.com

Karen Goring Auction Administrator
01502 713490 or auctionrooms@durrants.com

ONLINE BIDDING

We have teamed up with the-saleroom.com to allow you to bid at our auctions.
Simply register on www.the-saleroom.com/durrants under Live Auctions.

Bid online at our auctions through
the-saleroom.com

**CHINA, GLASS, CLOCKS, PICTURES,
WOOD, METAL, POTTERY, PORCELAIN,
OBJECTS VERTUE, SILVER, JEWELLERY
AND WATCHES**

Lots 1 – 556

- 1 A French smoked glass bowl with dragonfly and floral moulding designed by P'Davesn, dia 13" £120-150



- 2 A French smoked glass bowl with dove and leaf moulding, marked France by P'Davesn, dia 12" £80-120
- 3 A French smoked glass bowl with floral moulding, signed Verlys France, dia 15" £80-120
- 4 A French frosted glass bowl with floral moulding by P'Davesn for Verlys France dia 11" £60-80
- 5 A French opalescent glass thirteen piece fruit set with twelve moulded fruit dishes with floral decoration and geometric handles, dia 5" and a matching bowl with moulded nut and leaf decoration, dia 9", all by J.Landier £300-350
- 6 A rare French opalescent glass bowl with circular spiral moulding by Etling France, dia 13 1/2" £150-180



- 7 A French mauve frosted glass bowl with moulded leaf and floral decoration, signed Verlys France, dia 14" £100-120
- 8 A French smoked glass shallow jardinière with geometric moulding, marked Verlys France, 11" x 5 1/2" £60-80
- 9 Two circular French opalescent glass dishes plus two smaller with central star decoration, small dish marked, dia's 9" and 5", one large dish with frosted finish £150-180
- 10 A German Muschel pattern pink frosted glass two piece table centrepiece, the bowl of shell form on mermaid stand by Walther & Sohne, height 9 1/2" £130-150

- 11 A French opalescent glass seven piece fruit set with diamond moulding, large bowl marked made in France by Choisy-Le-Roi, dia's 9" x 4 1/2" £150-200
- 12 A French opalescent glass bowl with stylised leaf moulded decoration by Sabino, dia 12" £200-250



- 13 A pair of French opalescent glass bowls with geometric moulded decoration by Hunebell, dia 12" (one base flaw) £120-150
- 14 A French opalescent glass bowl with geometric moulded decoration, signed Julien France, dia 12" £100-120
- 15 A French opalescent glass bowl with spiral moulded bullrush decoration by Choisy-Le-Roi, dia 12" £80-100
- 16 A six piece opalescent glass fruits-de-la-mer set comprising two oval, two circular and two small circular dishes with seaweed moulding on shell feet marked Verlys France, dia 11", 10" and 5" £350-400



- 17 A French opalescent glass bowl with spike decoration by Hunebell, dia 11 1/2" £80-120
- 18 A Bohemian opalescent glass bowl with leaf moulding by Barolac, dia 11" £80-100
- 19 A French opalescent glass bowl with sunflower and leaf moulding by Choisy-Le-Roi, dia 12" £80-100
- 20 A rare French seven piece opalescent glass fruit set with leaf moulding, marked P'Davesn, made in France, dia's 9 1/2" x 5 1/2" £400-500



- 21 A rare French opalescent glass bowl with three mermaid moulded decoration, signed Verart Paris France, c1925 by Sabino, dia 13" (unpolished rim)
£400-500



- 22 A rare French opalescent glass bowl with flower moulding and three feet, marked Sabino France, dia 12" £350-400
- 23 A French opalescent glass plate with geometric moulding, marked Cesari France, dia 10" £40-60
- 24 A French opalescent glass bowl with seaweed and shell decoration, marked Vernox France (for Etling) dia 14" £150-180



- 25 A French mauve glass bowl with moulded sunflower and leaf decoration, marked Verlys France, dia 14" £120-150
- 26 No Lot
- 27 A French frosted glass bowl moulded with three carp by P'Davesn, dia 12" £250-300



- 28 A French pink frosted twelve sided glass bowl with bird and cherry decoration, dia 15" (light rim chips) £100-150
- 29 A French opalescent glass bowl with spiral moulding, marked J.Landier, dia 13 1/2" £200-250
- 30 A French opalescent glass bowl with fruit moulding by Choisy-Le-Roi, dia 11 1/2" £70-100
- 31 An opalescent glass dish with circular moulding, dia 6" £30-50

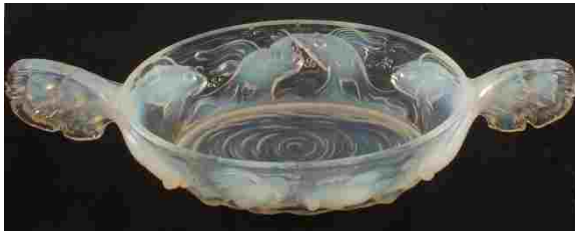
- 32 A French opalescent glass bowl moulded with three dahlias, marked Etling France, dia 12" £150-180
- 33 A French opalescent glass bowl with sunflower decoration and metal rim by Verlys, dia 14" £150-180
- 34 A French opalescent glass bowl moulded with three dahlias, marked Etling, France dia 8 1/2" £80-100
- 35 A French opalescent glass bowl with leaf and fruit moulding, marked Etling France, dia 12" £150-180
- 36 A French frosted glass bowl with internally moulded angel fish decoration by Verlys, dia 12 1/2" £250-300
- 37 A desirable French opalescent glass bowl with bird and floral moulded rim, marked P'Davesn, made in France 156, dia 12" £400-500



- 38 A German Uranium glass table centre piece with moulded rose decoration and lady figure, Reg No. 749772, dia 11" £120-150
- 39 A USA frosted glass bullet shade table lamp with Pierrot mount, height 10" £60-80
- 40 A French pate-de-verre blue frosted glass standing unclad lady by Daum, height 11" £150-180
- 41 A USA Cadmium glass table lamp with a USA Belleek standing lady shade, figure marked 3369, c1925, height 14" £120-150
- 42 A USA frosted Uranium glass candy dish and cover, marked 340 by L.E.Smith, height 9" £80-120
- 43 A USA pink frosted glass lady table lamp, marked Danse de Lumiere, pat appld, by McKee, height 11" £350-450



- 44 A French oval opalescent glass bowl with moulded carp design and fishtail handles, signed Verlys France, max dia 19"
£300-400



- 45 A French frosted glass table lamp with metal lady mount, height 8" £30-50
- 46 A rare German Art Deco frosted glass two piece table lamp with standing lady over shade by Sweig Mueller, height 15"
£200-250
- 47 A German blue frosted glass table lamp in the form of a kneeling unclad lady with pineapple shade, attributed to Sweig Mueller, height 15"
£120-150
- 48 A French conical Art Deco frosted glass table lamp on copper base by P'Davesn, height 9"
£250-300
- 49 A French opalescent glass torso by Savino, height 8"
£150-180
- 50 A rare French emerald green glass dancing lady with flared hem by Etling, height 13"
£150-180
- 51 An French illuminated glass plaque with bas relief decoration of the Saint Therese, the plaque on chrome base with inscription 'Homage de la Ste Chorale de Nortre Dame a Son Doyen D'Age Mr Jules de Regn Aucourt en Souvenir de Ses 50 Ans de Presence 1883-1933', unique piece by Verlys, height 10 1/2"
£550-600



- 52 A French glass conical table lamp with two moulded doves base by P'Davesn, height 11"
£400-500



- 53 A French Art Nouveau style bust of a lady titled 'Chatelaine', signed E.Villanis, height 12"
£100-150
- 54 A French terracotta figure of a seated unclad lady, marked 2052C, height 10"
£150-180



- 55 Signed Michael Rhys Jenkins horse print, Horace plus other pictures £20-30
- 56 Various Silver plate, straw and other boxes etc £20-40
- 57 Chinese pottery figures plus other china and glass (two trays) £20-40
- 58 An Ansonia mantel clock in black japanned case £20-40
- 59 A pottery mantel clock plus a modern wall clock £30-40
- 60 A modern wall clock plus a case of lawn bowls £20-30
- 61 A modern wall clock plus a print of the River Yar, Isle of Wight £20-40
- 62 Boxed Bohemian crystal vases, cutlery etc including a Silver pendant plus a rose decorated jug and bowl £20-40
- 63 An Iron Mr Punch doorstep plus dominoes, playing cards etc £30-40
- 64 A decanter with floral engraving plus various coloured and cut glass £30-50
- 65 A cased violin and bow £30-50
- 66 Various Copeland Spode and other china including Royal Crown Derby plate plus a 19th Century Imari bowl £30-40
- 67 A porcelain blue and white butterfly decorated tray, novelty biscuit jars plus other china £20-40
- 68 Various Victorian and other blue and white china £20-30
- 69 A Victorian chamber pot plus other china and glass £20-30
- 70 A box of various woodworking tools £30-40
- 71 A hen tureen plus other china and glass £20-30
- 72 An antique iron swivel range bracket £20-30
- 73 A 19th Century Rosewood and Mother of Pearl drop dial fusee wall clock, dial marked C.Runodle Halifax £200-300
- 74 A tureen inkwell plus other items £20-30

- 75 Two detachable mirrors, a modern wall clock plus The National Encyclopaedia, twelve volumes £20-40
- 76 A box of various china, lamp shades plus a porcelain doll in case £20-30
- 77 Various Royal commemorative, Sylvac and other china (two trays) £20-30
- 78 A 20th Century Portuguese Palissey plate with lizard, insect and shell decoration, dia 12" £40-60
- 79 Various party games £20-30
- 80 Betty Gainer, two painted floral silk cushions £20-40
- 81 An Art Deco clock garniture in various marbles with metal seated lady and boy playing pan pipes, dial marked Le Roy St Just En Chasee £100-150




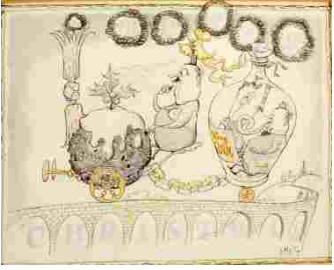
- 82 A pair of satin glass ewers, Victorian stoneware jug plus other china and glass £20-40
- 83 Various African seashells £20-30
- 84 A large stoneware Virol bone marrow jar plus Brass pan scales and weights £20-40
- 85 Various china plus other animal and bird ornaments £20-40
- 86 A Steel and Brass plane £30-50
- 87 Two Piquot ware tea sets £30-40
- 88 A Japanese eggshell tea set £20-30
- 89 A fox stole and a wedding dress etc £20-30
- 90 A cut glass decanter, Silver rim bowl and other glass £20-40
- 91 Three pairs of binoculars, Hanimex 8x30, Kershaw and Sthenara £20-40
- 92 A Meissen white and gilt comport with gilt metal stand, 19th Century Toby cruet plus a Goebels novelty vase £30-40
- 93 Various porcelain cups and saucers, Masons jug plus other items £20-30
- 94 Various LP's and singles including Bob Marley and an Ultravox picture disc £20-40
- 95 A 19th Century drop dial wall clock (for restoration) £30-50
- 96 A Copper coal helmet £20-30
- 97 A pair of Japanese frog candlesticks plus various Celadon glazed china £20-40

- 98 A Victorian floral jardinière, gilt metal and pottery table centre piece, a figure of a Whippet plus a brown glazed vase £30-50
- 99 A cast metal Whitbread advertising figure of a man with motto below £40-60
- 100 A 19th Century Copper saucepan and lid £40-60
- 101 A set of three 19th Century graduated Copper measure jugs £75-100



- 102 A 19th Century Copper lidded cauldron £60-80
- 103 A 19th Century Copper milk churn £60-80
- 104 A Brass jam pan, letter box plus a spirit level £30-50
- 105 A Brass bell on wooden stand £60-80
- 106 A 19th Century Copper coal helmet, a pair of bellows and a glass shade £30-50
- 107 Jean Marie Le Guen, two signed prints and a seaside pastel signed Hallard £20-30
- 108 An oil on board of boats in rough seas, 12" x 23" £20-40
- 109 James Jerram, watercolour of Burgh Castle from Breydon, 13" x 19" £30-50
- 110 A 19th Century satirical print, Female Influence of the Devons...e canvas, 10" x 13" £30-50
- 111 A watercolour plus other pictures £20-40
- 112 A pair of Douglas West lawn bowls prints, 14" x 21" £20-30
- 113 Sydney Vale, watercolour of a port scene with vessels, 13" x 19" £20-40
- 114 James Stark, pencil drawing of sailing ships, 8" x 6" £30-50
- 115 G.R.Rushton, two watercolours in double sided frame plus an Anthony Oseer watercolour of a sailboat £20-30
- 116 S.Ferrari, oil on canvas of a Venice canal view £20-30
- 117 River scene watercolour plus a limited edition print of a lady £20-30
- 118 A silvered mirror plus various pictures £20-40
- 119 A horse racing print, pub mirrors and various pictures £20-40
- 120 Two oval mirrors and a giltwood picture frame £20-30

- | | | | | | |
|-----|--|---------|-----|---|----------|
| 121 | A rectangular beaten Brass tray | £30-50 | 147 | A Royal Dux figure of an Edwardian lady with fan, height 24" | £150-200 |
| 122 | Five various oleographs | £30-40 | |  | |
| 123 | Six animal prints | £20-30 | | | |
| 124 | A framed 1966 World Cup newspaper plus other pictures | £20-30 | | | |
| 125 | No Lot | | | | |
| 126 | Oil on canvas of a beach scene with lighthouse, signed Thompson, 13" x 15" | £20-30 | 148 | An Arts and Crafts Brass Alms dish, the centre embossed with tulips and having a broad punch decorated rim, 19 1/4" dia | £40-60 |
| 127 | Four various table lamps | £20-40 | 149 | A pair of Edwardian open barley twist Brass candlesticks, 11 1/2" high | £30-40 |
| 128 | A cut glass vase, bisque figurines etc | £20-40 | 150 | A 19th Century Copper coal scuttle with swing and fixed handles | £40-60 |
| 129 | A tray of Brass and Silver plated wares to include goblets, candlestick and tea set etc | £30-50 | 151 | A heavy 19th Century seamed Copper ale jug, 9 1/2" high | £40-60 |
| 130 | Sylvac yellow and brown dogs plus animal ornaments | £20-40 | 152 | A Victorian Brass and Iron doorstep in the form of a countryman with loop handle, 13" high | £30-50 |
| 131 | Royal Albert Old Country Roses tea and dinner ware plus ornaments | £80-120 | 153 | A set of scales with weights, a Messenger & Sons oil wall lamp and a Royal Worcester three pint souffle case | £20-40 |
| 132 | Various wall plates, horn galleon etc | £20-30 | 154 | A pair of red and white Tiffany style lamp shades | £20-40 |
| 133 | A cased Cooke Troughton & Simms microscope | £40-60 | 155 | A machine made Persian pattern oval carpet, 8ft x 12ft | £30-50 |
| 134 | A cased Watson 'Service' microscope | £50-70 | 156 | A Spode Chinese rose dinner set | £100-150 |
| 135 | A Silver plated cruet, Oak barometer etc | £20-40 | 157 | No Lot | |
| 136 | Four Aynsley rose decorated tea cups and matching tea set, plus a Sagi tea set plus two others (two trays) | £30-50 | 158 | Various items of Silver plate and metalware | £20-30 |
| 137 | A pair of porcelain shoes, glass, paperweights plus other items | £20-40 | 159 | Various items of china and glass | £20-30 |
| 138 | Royal Doulton Fairfax coffee and tea set plus a Japanese eggshell tea set | £20-40 | 160 | Various items of cut and coloured glass (two trays) | £20-40 |
| 139 | A pair of lined curtains, pelmet and tie backs in Delft pottery bowls and flowers patterns, 202" (96" gathered) and 91" drop | £20-30 | 161 | Various Coronation and other china (two trays) | £20-40 |
| 140 | Five 19th Century Staffordshire flatback groups (some as found) | £20-40 | 162 | E.A.Whiting, six watercolours and oils plus two others | £30-50 |
| 141 | Three Royal Doulton character jugs plus a pair of glass Silver rim vases | £20-40 | 163 | An Abu two piece fly rod | £20-30 |
| 142 | Wedgwood hunting jug, vases and other china | £20-40 | 164 | A Royal Worcester Blush Ivory vase, miniature Coalport cup, saucer plus china, glass and cutlery (two trays) | £30-40 |
| 143 | A Satsuma lidded jar with figure and landscape decoration with kylin cover, height 25" (cracked and chipped) | £50-70 | 165 | A plated turnip pocket watch, dial engraved Collingwood & Co West Hartlepool | £20-30 |
| 144 | A Victorian mauve pottery oil lamp painted with classical heads (converted) | £40-60 | 166 | John Gay, two volumes, Poems on Several Occasions, Lintot 1753 and Samuel Cooper A Dictionary of Practical Surgery | £20-40 |
| 145 | A plaster inverted lady table lamp | £30-40 | | | |
| 146 | A Victorian Brass column oil lamp with pink glass bowl, cranberry shade and funnel | £60-80 | | | |

- 167 A pair of lawn bowls plus two jacks
£20-30
- 168 Joseph Shaw, one volume, Parish Law,
1753 £20-40
- 169 UFFA Fox, five volumes on yachting
£20-40
- 170 Various items of Wedgwood, Aynsley
plus other china and glass etc £20-40
- 171 S.Miller, pair of watercolours, Daybreak
Dartmoor and Evening on the Moors,
9" x 13" £30-50
- 172 Various jugs and tea wares etc £20-40
- 173 Boxed Edinburgh crystal glasses,
Wedgwood plus other china and glass
(two trays) £20-40
- 174 Various golf themed items including
bookends £20-30
- 175 A lacquer jewellery box plus other items
£20-30
- 176 Various volumes on East Anglia, golf etc
£20-40
- 177 A Winstanley pottery hare (leg repair)
£20-30
- 178 A Chinese red ground vase with floral
vase vignettes, mark to base, height
16 1/2" £50-80
- 179 An 18th Century Chinese blue and white
chinoiserie ginger jar (repaired) £20-40
- 180 A Bronze of an unclad standing lady,
signed Pierre Le Faguay £250-350
- 181 A Chinese blue and white globular jar
painted with figures in outdoor pursuits,
mark to base, 9 1/2" £100-200
- 
- 182 A Brass gong on cow horn supports
£40-60
- 183 A circular Persian reticulated Brass tray
with lion decoration plus one other
£30-40
- 184 A Chinese walking stick with Ivory grip
and Silver figure decorated collar £40-60
- 185 A Malacca walking cane with pencil insert
by Briggs, London £40-60
- 186 Riding crops, J.Schomberg & Sons
London plus three others with Silver
collars £30-50
- 187 Various vintage moulding planes
including Griffiths Norwich, E Preston &
Sons Ltd and Buck & Hickman Ltd
£30-50
- 188 Two shooting sticks, spirit levels, chisels
plus other tools etc £40-60
- 189 A Brass and hand painted glass fire
screen £30-40
- 190 A Pine swing toilet mirror £20-30
- 191 A resin figural chess set and wooden
board £40-60
- 192 A circular dish with pink floral painting
£20-30
- 193 A decorative world globe on Brass
gymbaled stand £50-70
- 194 A Chinese pottery figure of Shou Lu, a
pair of modern vases, a figure group plus
a vase £30-40
- 195 A Royal Worcester Peter Rabbit limited
edition Squirrel Nutkin, Beswick Rupert
plus other items £30-40
- 196 A Royal Chelsea Sheringham dinner and
tea set £30-50
- 197 Royal Worcester Evesham Vale dinner
and tea set (unused) £30-50
- 198 A Royal Worcester Herbs cake plate plus
other china and brassware £20-40
- 199 A Spanish porcelain dove plus other
items £20-30
- 200 A pair of Oak barley twist candlesticks
plus other items £20-30
- 201 A Belleek vase with floral encrustations,
black mark, height 13" £80-120
- 202 Royal Albert Jemima Puddleduck with
Foxy Whiskered Gentleman, Beswick
Johnny Town Mouse plus two other
animal figures £20-40
- 203 A Royal Dux figure of a water carrier,
height 11" £40-60
- 204 A Royal Dux figure of a girl with goat,
height 11" (horn repair) £30-50
- 205 A pair of 19th Century continental
porcelain vases of lady form, height
10 1/2" (restored) £30-50
- 206 A Royal Dux parrot, height 16" £40-60
- 206A An Edwardian Minton secessionist
peacock vase, pattern number 46
£80-120
- 207 Rowland Emmet (1906-1990), Merry
Christmas, ink and watercolour, signed
lower right with artist annotation,
5 1/2" x 7" £400-600
- 

- 208 A Liberty & Co hammered pewter box
£40-60
- 209 A circular Silver table mirror with floral
and fruit decoration, Walker & Hall,
Sheffield 1903 £80-120



- 210 A Silver William Comyns watch case
containing a pocket watch £50-80
- 211 An Art Nouveau Silver clock with floral
decoration and Turquoise enamel dial,
Walker & Hall, Sheffield 1906 £250-300



- 212 A tin of metal detector finds including an
unusual ball shaped padlock £30-40
- 213 A Silver Capstan inkwell, cream jug and
lidded toilet jar £50-70
- 214 A Dutch Silver miniature table with
hunting scene decoration, London 1896
£60-80
- 215 A Silver vesta case with engraved detail
together with a Silver card case £40-60
- 216 A set of six Silver teaspoons, London
1792 £30-50
- 217 A set of six Silver guilloche enamel coffee
spoons, Sheffield £40-60
- 218 A boxed Stratton compact and lipstick
£20-30
- 219 A case of costume jewellery and watches
£20-30
- 220 A collection of costume jewellery
including necklaces, bracelets and
brooches etc £20-40
- 221 A nest of drawers plus a box containing
costume jewellery and a small amount of
Silver jewellery £20-30
- 222 A boxed Pompadour Pearl double string
necklace plus two Accurist wristwatches
£20-40
- 223 A boxed gents Romanson automatic
wristwatch £40-60
- 224 A lady's Gold wristwatch plus various
others £40-60

- 225 A 15ct Gold half Hunter wristwatch with
blue enamel dial on leather strap £70-90
- 226 A 9ct Gold Rotary gents wristwatch with
inscription and a Camy watch £100-150
- 227 A gentlemans Longines Ultronic vintage
wristwatch c1970's on leather strap
(chips to glass, strap as found, watch
currently not working) £100-150
- 228 A 9ct Gold stone set fob on yellow metal
chain, a yellow metal oval locket on chain
with three items of costume jewellery
£50-70
- 229 Three Silver charm bracelets, two hung
with various Silver and white metal
charms £40-60
- 230 A collection of Silver and white metal
jewellery including brooches, lady's watch
etc £30-50
- 231 A 9ct White Gold stone set necklace
£60-80
- 232 A 9ct Gold chain with non matching 9ct
Gold bar and clip (some damage to a
couple of links) £150-180
- 233 A lady's 9ct Gold Tissot watch on strap
(strap as found) £200-300
- 234 A 9ct Gold chain with RG St Christopher
pendant and a 9ct Gold chain with white
and blue stone set pendant £30-50
- 235 Three pieces of 9ct Gold jewellery
including necklace, bracelet and single
earring together with a yellow metal
bracelet £100-150
- 236 A heavy 9ct Gold charm bracelet with five
9ct Gold charms including fish, bags of
brass, claw tigers eye set etc £900-1200



- 237 An unusual Silver bracelet made up of
panels depicting birds, with a similar
pendant £30-50
- 238 A pair of 9ct Gold hoop earrings and a
bar brooch £50-70
- 239 A 9ct Gold and Amethyst ring, size M
£50-70
- 240 A 9ct Gold lady's Excalibur wristwatch
£50-70
- 240AA blue stone set drop pendant and chain,
marked 925 £20-30
- 240BA purple stone set cross stamped 925 on
chain with similar earrings, stamped 925
£30-40

- 241 A pierced Silver bon bon dish £20-40
- 242 A cased set of Silver teaspoons and tongs £30-40
- 243 A cameo brooch, swivel brooch with floral painted insert plus a miniature Pearl necklace £30-50
- 244 Cigarette table lighters, boxed miniature toy gun set, coins etc £30-50
- 245 A large white metal coloured stone set necklace stamped 925 £30-40
- 246 A coconut cup and cover with reticulated carving of figure and palm leaf decoration, height 9" £80-120



- 247 A carved Ivory stick handle with multiple dog head carving and yellow metal band £200-250



- 248 A 9ct Gold ring, a cameo brooch, a Silver brooch set with Turquoise and purple stone etc £40-60
- 248AA 19th Century Bronze reticulated bowl on three monkey supports, mark to base, dia 5" £50-80
- 249 A Chinese yellow ground stem bowl with green dragon decoration, mark to base, height 3 1/2" £50-70
- 250 A Chinese olive green vase, mark to base, height 5" £20-40
- 251 A Mahogany case containing medical and other microscope slides £50-70
- 252 A 19th Century wood and Ivory case of Tortoiseshell lancets plus a leather blood pressure item £40-60
- 253 A 19th Century leather cased dental kit by Charles Rawling plus other dental instruments £30-50
- 254 Various paper knives plus a Chinese carved bone handled knife £30-40
- 255 Various penknives in bone, wood and metal cases £30-50

- 256 A tusk handled saw, two boot jacks plus a billiard cue holder £30-50
- 257 A pair of 19th Century Brass posy holders pierced with cherub decoration, a miniature folding table plus a Brass ships wheel cigar cutter £20-40
- 258 A jumbo table cigarette lighter plus Zippo and various others £30-50
- 259 A Bronze After Mene of a horse and jockey £60-100
- 260 A large Chinese circular glass ball on stand with interior painting of ship, figures and landscape £50-80
- 261 An 1889 crown £20-30
- 262 An Art Deco Silver cigarette box £40-60
- 263 A Japanese Ivory figure of a man and boy £60-80
- 264 A Chinese Bronze censer on stand, mark to base £70-100
- 265 A nicely carved Jade pendant on yellow metal mount £45-65
- 266 A nicely carved Jade pendant on yellow metal mount £45-65
- 267 A large Victorian oval Copper jelly mould of two tier turret form by Benham & Froud No.607, also stamped John Finlay & Co, Ironmongers, Glasgow, 6 3/4" wide £140-160
- 268 A Victorian oval Copper jelly mould of turret form by Benham & Froud, No.621, also stamped John Finlay & Co, Ironmongers, Glasgow, 5 3/4" wide £120-140



Lots 267 and 268

- 269 A Victorian circular Copper jelly mould of turret form, stamped 237C, 5 1/2" dia £70-90
- 270 A Victorian circular Copper jelly mould of two tier turret form, stamped M480, 4 1/2" dia £60-80
- 271 An Art Deco Silver and Tortoiseshell photo frame, Birmingham 1927 £150-200
- 272 A Silver desk thermometer, Chester 1903 £50-80
- 273 A boxed Moorcroft Enlightenment design trial vase, marked to base and dated 7/5/07, height 9 1/2" £200-250

- 274 A boxed Moorcroft Pulsatilla pattern on cream ground circular lidded bowl, design by Vicky Lovatt, marks to base, No.50/100, dia 6 1/2" £130-180
- 275 A boxed Moorcroft Woodland pattern vase, designed by Kerry Goodwin, marks to base, No.33/150, height 10" £180-220
- 276 A boxed Moorcroft Ragged Robin vase, designed by Rachel Bishop, marks to base, No.7/200, height 10" £180-220



Lots 273, 275 and 276

- 277 A boxed Moorcroft Carolean Dream biscuit jar, designed by Rachel Bishop, marks to base, No.46/150, height 7" £200-250



- 278 A 9ct Gold cased Everite lady's wristwatch, a 9ct Gold front and back heart locket plus a yellow metal core bangle £40-60
- 279 Five Silver pocket watches £40-60
- 280 An 18ct Gold Diamond Art Deco ring, size N £35-55
- 281 An 18ct Gold Sapphire and two split pearl set gypsy ring, size M £45-65
- 282 A gents Gold orange stone set ring, marked 750, size X £170-220
- 283 No Lot
- 284 An 18ct White Gold set with multiple Garnets, size M £100-150
- 285 A 9ct Gold Garnet set cluster ring, size P £55-80
- 286 A 9ct Gold pink stone set ring, size N £40-60
- 287 A 9ct Gold green stone set ring, size N £30-50
- 288 A 9ct Gold Opal set cluster ring, size M £35-55
- 289 Two 9ct Gold CZ set rings, size N £40-60
- 290 A 9ct Gold chain plus a costume brooch in form of a bird £70-100

- 291 A fine arched Brass dial George III Mahogany cased bracket clock, dial is signed by Thomas Upjohn Exeter, a fine eight day movement with engraved back plate, strike/silent and calendar subsidiary dials and striking the hours on a single bell, comes with pendulum and key, height 18" £1500-2500



- 292 A Chinese white metal goblet with floral engraving, marked L.S. and a character stamp on the foot, weight of metal 4.25 troy ounces £70-80
- 293 A hallmarked Silver box, maker E.S.B. Birmingham 1907, the lid inset with a Liverpool Centenary medallion by C.J.Allen (ref Spinks 1884) 2 1/2" dia, total inclusive weight of Silver 13 troy ounces £200-250
- 294 A large Victorian Alexandra Cross circular Copper jelly mould inscribed 'Registered April 29 1863', 6 1/2" high £140-160
- 295 A Silver Samson & Morden candle douter in the form of a hunting horn, London 1905 £225-275
- 296 A Silver handled Ivory page turner, Birmingham 1897 £30-50



- 297 An Wittnauer automatic Gold plated gents wristwatch £30-40
- 298 A Victorian oval Ivory Etui with hinged lid containing gilt metal sewing implements £200-250



- 299 An early Chinese Celadon plate from the S.Berkeley Smith Collection, dia 10 1/2" £60-100

- 300 A beautiful Diamond spray brooch set in white metal (possibly Platinum) set with brilliant and baguette cut Diamonds
£700-900



- 301 A lovely Platinum Art Deco style Diamond ring, Diamond approx 1ct with a baguette cut Diamond to each shoulder, size M
£1500-2000



- 302 A 9ct Gold cabochon stone set ring, size K
£50-70
- 303 An 18ct Gold buckle ring set with small Diamond, size R
£70-90
- 304 A Gold wedding band (as found)
£100-150
- 305 A Gold ring set with old cut Diamond, size M, possibly 18ct
£120-150
- 306 An 18ct White Gold large Emerald and Diamond set ring, central Emerald set with baguette cut Diamonds either side, Emerald weight approx 15.7ct with certificate, size L
£7500-8500



- 307 A suite of jewellery consisting of matching brooch and earrings, both set with large purple stones mounted in yellow metal, in fitted box
£1000-1200
- 308 A continental 14ct Gold lady's fob watch with enamelled picture to back cover depicting a rose
£400-500
- 309 A pair of square cut Diamond studs mounted in white metal, butterflies stamped 750, total Diamond weight approx 2cts
£1200-1400
- 310 A lady's watch by The Royal Diamond in 18ct White Gold with brilliant cut Diamond studded dial and bezel and square cut Diamonds on lugs, on a black leather strap
£3000-3500

- 311 A quantity of costume jewellery including necklaces, brooches, earrings etc
£20-40
- 312 A heavy Silver V block link necklace
£30-50
- 313 Two Silver bracelets, one large articulated ribbon with milled finish, the other twelve rectangular segments with abstract design
£50-70
- 314 A quantity of Silver jewellery including abstract pendant, Lapis set bracelet, necklace etc
£50-70
- 315 Two ladies wristwatches, one 14ct Gold case set with Rubies on plated strap, the other 9ct Gold on 9ct Gold strap
£120-150
- 316 A 9ct Gold rose brooch
£50-70
- 317 A 9ct Gold gate link bracelet with heart shaped padlock
£200-250
- 318 A Gold Egyptian pendant
£50-70
- 319 A 9ct Gold toothpick
£50-70
- 320 An 18ct White Gold Diamond line bracelet set with baguette and brilliant cut Diamonds, est total Diamond weight 7.96ct (stamped on bracelet)
£5000-6000
- 321 A continental two tone Gold bracelet made up of links, stamped 585
£800-1000
- 322 A lady's White Gold Diamond set wristwatch, dial marked G.Jenssen on 9ct White Gold mesh strap
£1000-1200
- 323 A yellow and white metal mounted old cut Diamond with Amethyst drop
£250-350
- 324 A yellow metal clasp set with hair panel
£600-700
- 325 An 18ct Gold Ruby and Diamond cluster ring, size N
£600-700
- 326 An unmarked Gold five stone Emerald and Diamond ring, inscription to inside shank, size P 1/2
£1200-1400
- 327 A unusual ring set with large cabochen Emerald with wood set into shank, Emerald est 11cts, ring stamped 750, size Q
£1000-1200
- 328 A large Sapphire and Diamond cluster ring in square setting, central Sapphire approx 4.5ct, surrounded by brilliant cut Diamonds, on unmarked Gold shank, size N 1/2
£3500-4000



- | | | | |
|-----|--|-----|--|
| 329 | A White Gold ring pave set with square cut Sapphires and Diamonds
£1200-1400 | 350 | A three stone Diamond ring set in 18ct Gold, estimated total Diamond weight 0.5ct, size K
£250-350 |
| 330 | A 1968 sovereign in 9ct Gold loose mount
£180-220 | 351 | A gentlemans 9ct Gold cased square wristwatch on leather strap (as found)
£60-80 |
| 331 | A 1894 sovereign in 9ct Gold loose mount
£180-220 | 352 | A quantity of Silver and white metal jewellery
£40-60 |
| 332 | A 9ct Gold brooch in bow form
£30-50 | 353 | A 9ct Gold oval locket on yellow metal chain
£30-50 |
| 333 | A 9ct Gold linked necklace with crossover and Emerald and Pearl cluster set at crossover
£200-250 | 354 | An 18ct Gold signet ring, an 18ct Gold shirt stud and a 15ct Gold shirt stud (as found)
£80-120 |
| 334 | A chain link necklace (tested as 9ct) (clasp is as found)
£300-400 | 355 | A Platinum wedding band (as found)
£40-60 |
| 335 | A yellow metal stick pin set with pheasant with enamelled head
£50-70 | 356 | A shell cameo ring, stamped 18ct
£50-70 |
| 336 | A pair of leaf design earrings (tested at 18ct) (no hallmarks, no back to earrings)
£150-250 | 357 | A bi-metal watch chain, stamped 18ct
£70-90 |
| 337 | A pair of 18ct White Gold Diamond cluster earrings, each earring approx 0.25ct (no backs to earrings)
£100-150 | 358 | A Gold (tested) long guard chain with replacement clasp
£150-200 |
| 338 | A pair of 9ct Gold mounted Opal earrings (non matching butterfly backs)
£40-60 | 359 | A Silver mirror, brush and lidded glass jar with inscribed monograms along with two small Silver lidded pots with decoration (both as found)
£30-50 |
| 339 | A pair of 9ct Gold Ruby and Diamond heart shaped earrings (non matching backs)
£40-60 | 360 | A cased set of six spoons and tongs (one spoon missing) together with a single Silver seal top spoon and a Silver caddy spoon
£20-30 |
| 340 | A pair of earrings each set with large Pearl, stamped 14K
£150-250 | 361 | A small Silver salver with three legs, pie crust edge, hallmark London 1912
£120-150 |
| 341 | A pair of 9ct Gold Emerald and Diamond set drop earrings (one back missing, other not Gold)
£30-50 | 362 | A Baltic Amber pendant with a Silver mount
£30-50 |
| 342 | Two odd earrings, one Gold in heart shaped set with three Diamonds, the other yellow metal paste set
£20-40 | 363 | A white metal nine piece Amber bracelet
£30-50 |
| 343 | A Silver lipstick holder with mirror, hallmark London, maker mark S.J.R.
£40-60 | 364 | An Amber stretch bangle
£20-40 |
| 344 | A pair of unmarked Gold earrings set with old cut Diamonds and single Pearl
£400-500 | 365 | A white metal Tigers Eye set bracelet, stamped 925
£20-40 |
| 345 | An 18ct Gold Opal and Diamond cluster ring, central Opal set with twelve old cut Diamonds surround, size J (Opal is very rubbed)
£250-350 | 366 | A limited edition Bronze sculpture of a flamenco dancer signed by the artist Neil Welch 25/50 with certificate, 13 1/4" tall
£300-400 |
| 346 | A 9ct Gold Ruby and Opal cluster ring, size J (hallmarks rubbed)
£40-60 | 367 | A limited edition Bronze sculpture of Sakura signed by the artist Neil Welch, 21/50 with certificate, 11" tall
£300-400 |
| 347 | A white metal full Diamond set eternity ring (twenty one Diamonds at approx 0.04cts each), size I 1/2, believed to be Platinum
£80-120 | | |
| 348 | An 18ct Gold Diamond set ring, Diamonds set in square settings, central stone missing, size M
£50-70 | | |
| 349 | An 18ct Gold Diamond set ring of flower form, size K
£120-160 | | |



Lots 366 and 367

- 368 A limited edition Bronze Snipe, 131/150, 2 1/2" tall £90-120
- 369 A limited edition Bronze Puffin pair, 6/150, 2 1/4" tall £90-120
- 370 A miniature Bronze Bunny, 1" tall £30-40
- 371 A miniature Bronze Panda, 1" tall £40-60



Lots 370 and 371

- 372 A miniature Bronze Mouse in half eaten apple, 1 1/2" tall £40-60
- 373 A miniature Bronze Pug, 1 1/2" tall £35-55
- 374 A miniature Bronze flying Partridge, 2" tall £35-55
- 375 A miniature Bronze Meerkat pair, 2" tall £35-55
- 376 A limited edition Bronze Meerkat, 155/250, 2 1/4" tall £40-60
- 377 A limited edition Bronze Kingfisher on branch, 173/250 £80-120
- 378 A limited edition Bronze Wren on branch, 187/250, 2" tall £80-120



- 379 A miniature Bronze Border Terrier, 1" tall £30-40
- 380 A miniature Bronze Blue Tit on branch, 2" tall £35-55
- 381 A resin Bronzed figure of a Basset Hound £60-80
- 382 A Sterling Silver bon bon dish plus a pair of Silver salts, Birmingham 1977 £50-70
- 383 An Onyx jewellery box to include Silver jewellery and ingot etc £40-60
- 384 A Silver designer multi stand bracelet stamped Ghost, a Silver band ring and two Silver necklaces £30-50
- 385 A collection of pocket and wristwatches together with a Jaeger Lecoutre Manufacturers Book of Timepieces to include RRP list 2006 £40-60

- 386 A Mahogany Georgian stick barometer, face marked Hickman of Oxford £200-300
- 387 A late 18th Century Mahogany Silver dialled eight day striking bracket clock, dial signed George Suggate of Halesworth, case stands on Brass feet, top of case are four corner gilded pineapple finials, the side of the case have a pair of gilded frets with glass behind to allow viewing of the twin fusee five pillar movement, with key, pendulum and documentation of servicing, height 18 1/2" £650-1000



- 388 A cased Mont Blanc Boheme Rouge ballpoint pen, comes with an International Guarantee Certificate, dated 19/10/02 and purchased from Preston and Duckworth, Ipswich £50-70
- 389 A cased Meerschaum pipe with Silver band £20-40
- 390 A cloisonné three piece tea set £30-50
- 391 A yellow metal watch chain and a yellow metal seal £30-50
- 392 A 9ct Gold eight link Amethyst set bracelet £250-350



- 393 A pair of boxed Lalique heart shaped earrings, signed to the back £60-80
- 394 A Black Onyx set five stone necklace and matching two stone earrings, stamped 925 £35-45
- 395 A Chinese Celadon colour pot with tortoise figure in centre of the bowl £30-50
- 396 A Chinese hand painted brush pot with figure decoration and character marks to underside £50-70



- 397 A purple stone set bracelet, stamped 925
£30-40
- 398 A boxed Lalique crossover heart pendant
on yellow, signed suspension £80-120



- 399 A purple stone set drop pendant,
stamped 925 £20-30
- 400 A Smoky Topaz set bracelet set in white
metal £20-30
- 401 Two Royal Dux figure mounted baskets
(restored) £20-40
- 402 A 19th Century continental porcelain
vase with girl and floral mount, height 9"
(base crack) £20-40
- 402AA late Victorian Minton Majolica cherub
basket (as found) £30-40
- 403 A pair of Victorian brown and white
Staffordshire dogs £20-40
- 403AA pair of Victorian Walker and Hall Silver
plated Corinthian column candlesticks
£40-60
- 404 A pair of oval coloured chrysoleums of
ladies, one with paper label in French,
H.Guttenberg, 9" x 7" £40-60
- 404AA late Victorian English Majolica oyster
plate with kite mark £20-30
- 405 Two Arts and Crafts embossed Copper
jugs, one with daffodils, both 8" high
£30-40
- 406 A set of three graduated 19th Century
Brass tankards, quart, pint and half pint
£80-100
- 407 An antique baluster lidded pewter flagon,
6" high plus quart and pint pewter
tankards £30-50
- 408 Silver plated and Brass ink stands plus
other items £30-40
- 409 A French waisted Boulle clock £70-100
- 410 A grainware heavy perspex Planet Earth
ice bucket £20-40
- 411 A Chinese circular cloisonné butterfly and
floral dish, dia 12" £50-80
- 412 A metronome and Copper hunting horn
plus Brass bell £20-40
- 413 A Royal Doulton William Shakespeare
character jug, D6933 limited edition,
647/2500 £50-70

- 414 A pair of Rye Pottery 2001 cats with
Beswick King Charles spaniel £30-40
- 415 A postcard album containing comical,
sweetheart postcards and a postcard of
wreckage caused by Zeppelin bomb in
Denmark Road Lowestoft, April 16th
1915 etc £40-60
- 416 Tales of a Grandfather volumes 2 and 3,
with inscription inside cover dated 1828,
illustrated Dickens Sketches by Boz,
Fighting the Whales by R.M.Ballantyne
etc £30-50
- 417 A Brass and enamelled dial mantel clock
under dome with pendulum £75-100
- 418 A bronzed figure of a Scottie dog £20-30
- 419 A bronzed figure of a Border Terrier
£20-30
- 420 A bronzed figure of a Collie dog £20-30
- 421 A resin Bronzed figure of a pig with bird
£60-80



- 422 A bronzed figure of a Hare with raised
paw £40-60



- 423 A small bronzed figure of a Hare moon
gazing £40-60
- 424 A box of collectables to include Silver,
treen and china etc £30-50
- 425 Various fishing reels and flies etc £50-70
- 426 Two photo and postcard albums of
oriental subjects, Shanghai 1920's, Hong
Kong plus other world voyaging,
Liverpool to Japan £40-60
- 427 Various cigarette cards in sleeves £20-30
- 428 Fifteen albums containing cigarette and
trade cards set and part sets £40-60
- 429 A 19th Century Chinese blue and white
ginger jar and a crackle ware vase
£50-70
- 430 A Chinese white metal hanging censer
with reticulated ball on hardstone
suspension with figure, dragon and red
stone mounts £50-80

- 431 An Indian Bronze Deity, height 3" and a hardwood cover picture story book £20-40
- 432 A pair of WWI Medals and a Death penny to 22588 Pte.E.Bartle NCRFR £100-150
- 433 A pair of 19th Century Chinese floral ginger jars (as found) £20-40
- 434 A 19th Century Chinese globular vase with figure and landscape painting, height 10" £80-120



- 435 A Crown Devon lustre bowl decorated with fishes £30-40
- 436 A large quantity of Wedgwood Willow pattern dinner and tea service (three boxes) £60-80
- 437 A part silk Persian pattern rug, 76" x 54" £40-60
- 438 A pair of Chinese polychrome porcelain dignitaries, height 15" £50-70
- 439 A Victorian tiger skin with head mount and claws, length including tail is 122" width 74", relined and faded skin £200-400



- 440 A cut glass dressing table set plus a pair of cut glass decanters £20-40
- 441 Eight various pot lids to include Uncle Toby, The Village Wedding, Peace and A Pair etc £40-60
- 442 A Brass bound writing slope with blue leather insert £30-40
- 443 Three sets of binoculars, Swallow 10x50, Boots 8x30 and Tinto 10x50 £40-60
- 444 David.W.Haddon (1884-1914), pair of oils on board of a fisherman and his wife in heavily gilded frames, signed lower left and right, 7 1/2" x 5 1/2" £700-1000



- 445 An Edwardian Mahogany inlaid tray with central shell £30-50
- 446 Three Hazel bespoke sticks with stag grips £20-30
- 447 Two Ash and one Hazel bespoke sticks with water buffalo and stag grips £20-30
- 448 Six wildlife prints of birds, animals and flowers £20-40
- 449 An Oak cased grandmother clock with key and pendulum £30-50
- 450 A vintage leather bound travelling case with Brass locks £20-40
- 451 Various china and glass including Royal Doulton stoneware £20-40
- 452 A box of various plates, 19th and 20th Century £20-40
- 453 A box of various plates, 19th and 20th Century £20-40
- 454 A case of headphones, two WWII £20-30
- 455 Two volumes, Farmers Magazines 1809/1838 plus The Sporting Magazine 1857 £20-40
- 456 A Mahogany mirror backed hanging cabinet with bevelled glass £35-50
- 457 A triple panel hanging mirror £30-40
- 458 A Victorian floral biscuit barrel plus a Japanese eggshell tea set £20-30
- 459 Garman Morris, two watercolours, A Grey Morning and Moonrise, 7" x 20" £60-80
- 460 Tony Malton, watercolour, Brancaster Staithe, 10" x 14" £20-40
- 461 Two paintings of a Japanese man and woman on sack cloth, possibly Burma Prisoner of War, 16" x 12" £30-50
- 462 Two Japanese pictures on cloth plus a watercolour £20-30
- 463 A cased Pietro accordion £30-50
- 464 Cased butterflies and sundries £20-30
- 465 A 19th Century Norwich maker Mahogany banjo barometer £40-60
- 466 A Victorian Staffordshire standing Russet dog vase under glass dome £20-40
- 467 A set of three Art Nouveau Brass fire irons, 26" long plus a pair of decorative Brass fire dogs £40-60
- 468 A 19th Century fretted Brass fender with central band and three paw feet, 48" wide £50-70
- 469 A pair of Arts and Crafts Brass and Copper three branch candelabra on circular bases, 11 3/4" high £50-70
- 470 A French Bronze stick stand cast with a naturalistic branch handle and support, the upright with a rifle and the base with a dog, 22" high £100-120

- 471 An Arts and Crafts adjustable Brass table lamp in the manner of Benson, raised on tripod supports, 15" high overall £40-60
- 472 An Oak cased wall hanging clock £20-30
- 473 A George Butler & Co Silver plated canteen of cutlery £70-100
- 474 A box of various cuckoo clocks £20-40
- 475 A modern 'retro' radiogram with Oak effect case £20-30
- 476 A box of assorted ephemera £30-40
- 477 A selection of Brass items, one printers block, letter opener, stamped Just Denmark B2063, postcards etc £30-50
- 478 A quantity of Noritake plus William Whiteley Limited coffee set £40-60
- 479 A box of various football trophies and medallions £20-30
- 480 A box of six teapots, Toby jug and a resin seated Charlie Chaplin with cane £40-60
- 481 A box of various Silver plated items and cutlery £20-40
- 482 Three Fairings, various china, glass, Dandy, Beano and other books including clock reference books (three boxes) £40-60
- 483 Two Victorian meat plates, three paintings and a string top stool £20-40
- 484 A German boxed Hohner accordion plus a top hat £40-60
- 485 A Bingoscope vintage film projector plus various pictures and magazines £30-50
- 486 Alan Lumsden, limited edition print, Tennis, framed and glazed, 22" x 17" £20-30
- 487 An AMS Mahogany wall hanging clock £20-40
- 488 An Oak cased eight day mantel clock plus a glass domed Kern anniversary clock £20-30
- 489 A Rowland Hilder print plus two various sized mirrors £20-30
- 490 A pair of Arts and Crafts Benson style Brass candlesticks of scroll form raised on swift legs and ball supports, 11" long £40-60
- 491 A heavy 19th Century seamed Copper coal helmet with swing and fixed handles £40-60
- 492 A pair of late 19th Century church Brass candlesticks with pierced drip pans, knopped stems and pierced stepped circular bases, 13 1/2" high £40-60
- 493 An extensively carved wooden oriental gentleman fishing £30-50
- 494 A medium bronzed figure of a Hare moon gazing £80-100
- 495 A large bronzed figure of a Hare moon gazing £100-150



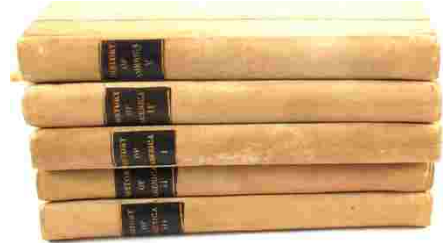
- 496 A bronzed figure of a Hare preening £40-60
- 497 A bronzed figure of a Hare scratching its ear £40-60
- 498 A bronzed figure of a recumbent Hare £40-60
- 499 An Etah Mahogany field camera with three plates and a spare lens marked 'The Etah', London to read plate £40-60
- 500 A tray of mixed ceramics and soapstone £30-50
- 501 A box of Brass ware to include an oil lamp, candelabra etc £20-30
- 502 A box of Victorian and later photographs, engraving and prints £20-30
- 503 A Mahogany banjo barometer £30-50
- 504 A pair of oil on boards on country river scenes in heavily gilded frames, signed J.Hall lower right and left, 32" x 14" £60-100
- 505 An Oak and Burr Walnut cased Edwardian Constantia mantel clock, with key and pendulum £30-40
- 506 A box of Silver plate and metal ware £20-30
- 506A A large Victorian flame Mahogany double compartment tea caddy £60-80
- 506BA Mahogany inlaid Georgian knife box £80-120
- 507 A selection of various prints, oils etc (10) £20-40
- 508 A selection of LP's and singles £20-30
- 509 A hand made Italian fruit bowl, an Aynsley gilt and cobalt blue comport plus a large oriental vase with character marks to base (as found) £30-40
- 510 A Bleu do Roi part dinner set £20-30
- 511 A framed gilt thread on red silk material, 15" x 9" £20-30
- 512 Two pairs of Victorian Brass candlesticks £20-40

- 513 A pair of 19th Century Chinese blue and white bird and floral vases, height 18" (one repaired) £80-120
- 514 A 19th Century Imari floral charger, dia 18" £80-120
- 515 Modern Chinese ceramics including vases and ginger jars £20-40
- 516 An Imari shaped edge plate, two crane decorated plates plus a Kutani vase £40-60
- 517 A pair of 19th Century Imari shaped edge bird and floral plates, dia 12" £50-70
- 518 A 19th Century Imari floral charger, dia 16" £40-60
- 519 A 19th Century English chinoiserie decorated comport, an Imari covered bowl plus other Oriental china £20-40
- 520 Three 19th Century Imari shaped edge plates (two cracked) £40-60
- 521 A 19th Century Imari shaped edge bowl plus a two handled plate £50-70
- 522 A 19th Century Kutani figure and floral charger plus a Satsuma plate (chipped) £30-50
- 523 A 19th Century Japanese chocolate ground bird and floral shaped edge dish, dia 12" £40-60
- 524 A Royal Doulton Draycot dinner set £40-60
- 525 Crown Devon gilt and cream plus other china (five boxes) £20-30
- 526 Various cameras, Victorian family Bible and boxed treasures of the earth £20-40
- 527 Various items of Poole floral china £40-60
- 528 Four vintage tackle blocks ex Norfolk Wherry and a handsaw £30-50
- 529 A still life watercolour plus three other pictures £20-30
- 530 A Victorian Brass jam pan plus a coffee grinder £20-40
- 531 A Delft miniature chest plus chairs and other china £30-50
- 532 C.Daussut, watercolour, Eventide Nr Buscombe, Wilts, 9" x 13" £200-300



- 533 An Afghan carpet, 144" x 108" £100-150
- 534 An Egyptian machine made carpet in Kashan style, 142" x 111" £20-40

- 535 Various nautical and other pictures £20-40
- 536 Various motor manuals etc £20-30
- 537 A Silver plated glass fruit bowl, black teapot etc £20-30
- 538 Five volumes on the History of the United States of America, Col Tal.P.Shafner, steel engravings, London Printing & Publishing Co, 3/4 vellum £150-200



- 539 Two Mahogany cased scientific instruments £30-40
- 540 Mr Fox and Mrs Badger filled dolls £20-40
- 541 A Burr Walnut mantel clock, face marked Sir John Bennett Ltd £20-30
- 542 A pair of Margaret.W.Tarrant prints, a watercolour and a mirror £20-40
- 543 An Allertons yellow and floral dinner set £20-40
- 544 A canteen of Osborne Silver plated cutlery £40-60
- 545 Various china and glass etc (two boxes) including figurines £20-40
- 546 A Medina glass vase plus Aynsley and other china etc £30-40
- 547 A box of various branded glass bottles, stoneware jars etc £20-30
- 548 A selection of Lowestoft prints of harbour, ships plus two oil on boards, Lowestoft fishing vessels, one by John Chambers £40-60
- 549 A quantity of pictures including two Beatrix Potter prints £20-40
- 550 A stag and woodland signed print, 19" x 29" £20-30
- 551 A Royal Dolton Norfolk tea set complete with teapot £40-60
- 552 A Royal Doulton Norfolk coffee set, breakfast cup and saucer plus octagonal dishes £30-50
- 553 A Royal Doulton Norfolk hors d'oeuvres dish, shell dishes and plates £50-70
- 554 A box of table cloths etc including embroidered and lace £20-40
- 555 Various Denby, Wedgwood and other china and glass (three boxes) £20-40
- 556 Three modern limited edition prints plus eight volumes, Book of Knowledge £20-40

FURNITURE AND COURTYARD

Lots 1001 – 1155

ALL MEASUREMENTS ARE APPROXIMATE

- 1001 An Oak three drawer chest and a tallboy
£20-40
- 1002 A modern beige upholstered three piece
suite £60-100
- 1003 A long Pine multi door storage cabinet
£40-60
- 1004 An Art Nouveau carved Oak sideboard
£50-80
- 1005 Two Oak chests of drawers and a
1950's china cabinet £20-40
- 1006 A Victorian Pine chest two short over
three long drawers £70-100
- 1007 A 1920's Oak sideboard £20-30
- 1008 A painted pot cupboard, gramophone
cabinet and storage box £30-50
- 1009 A Victorian Pine blanket box (as found)
£20-40
- 1010 A Victorian Mahogany chest of two
short over three long drawers £30-50
- 1011 Two Edwardian Mahogany jardinière
stands £40-60
- 1012 Two standard lamps and a bentwood
coat stand £20-40
- 1013 A modern pink upholstered sofa bed
£20-40
- 1014 A modern pink upholstered three seat
settee £20-40
- 1015 A Victorian Pine dresser with glazed
cupboard back and a Rosewood base
occasional table £100-200



- 1016 A Georgian Mahogany circular snap top
tripod table and a pair of 19th Century
Mahogany bar back chairs £60-100
- 1017 A modern light Oak four drawer chest
£30-50
- 1018 A modern kneehole desk £30-50
- 1019 A carved Oak bedside cabinet, a nest of
two tables and plant stand £20-40
- 1020 A 1950's blue and white painted kitchen
cabinet £60-80
- 1021 A modern Pine eight drawer chest and
two bedside chests £30-50

- 1022 A modern leather button back wing
armchair and stool £70-90
- 1023 A Georgian Oak four drawer bureau on
bracket feet £30-50
- 1024 A 1920's Oak china cabinet and a nest
of three tables £30-50
- 1025 An unusual Edwardian child's high chair
which converts into a baby walker on
wheels £70-100



- 1026 A painted 19th Mahogany two drawer
side table £40-60
- 1027 A 19th Century tripod table,
reproduction hall table and a cane top
stool £20-40
- 1028 A Walnut (part veneered) Georgian
revival three drawer lowboy on cabriole
legs £60-80



- 1029 A Georgian Oak side table on square
tapered legs £30-50
- 1030 A modern Mahogany finish sideboard
and an Edwardian inlaid Mahogany
dressing chest £30-40
- 1031 An arched top display cabinet with
glazed and cupboard doors £50-80
- 1032 A stained Pine single door display
cabinet with plate glass shelves £25-45
- 1033 An light Oak mirror back and lead
glazed sideboard £80-120
- 1034 A 19th Century continental carved Oak
food hutch and a reproduction bookshelf
unit £50-80
- 1035 A modern faux leather surround mirror
and a wall hanging metal art sculpture
£35-55
- 1036 A modern Pine two door and two drawer
wardrobe £50-80
- 1037 A Mahogany wardrobe, chest and pair
of bedside cabinets £20-40

- 1038 A reproduction Mahogany 'D' end dining table £30-40
- 1039 A modern pedestal dining table £30-50
- 1040 A Victorian Mahogany nursing chair on cabriole legs £50-70
- 1041 An Oak bedside cabinet and a Stag telephone table £20-40
- 1042 A 19th Century child's high chair and child's stick back chair £40-60
- 1043 A modern Pine circular drop leaf table and four chairs £30-50
- 1044 A modern Pine kitchen table and a set of four Beech chairs £40-60
- 1045 A long Mahogany drop leaf table £30-50
- 1046 A 19th Century inlaid Mahogany bureau bookcase £200-300



- 1047 A Victorian Walnut and Mahogany mirror door wardrobe £30-40
- 1048 A 19th Century ladderback rush seat child's rocking chair £50-70
- 1049 A Victorian Mahogany rising top kneehole desk £60-100



- 1050 A stick back rocking chair, one other and a TV table £20-40
- 1051 A Victorian Pine shelf back dresser £100-150
- 1052 A Victorian chest of short drawers over three long drawers £70-100
- 1053 A Victorian Pine cupboard bookcase £70-100
- 1054 A wheelback elbow chair, a treadle fret saw and two fire screens £30-50
- 1055 A Mahogany butler's tray on stand and an upholstered folding chair £30-40
- 1056 An Edwardian Satinwood mirror back dressing chest £20-40

- 1057 A long modern Pine shelf back dresser with five drawers over four cupboards below £80-120
- 1058 A 1920's Oak glazed bookcase on stretcher base £20-40
- 1059 A Victorian Mahogany and cross banded eight day long case clock with arched dial, marked J. Smith-Irvine. The dial is painted with the four seasons and in the arch there is a painting of Robert Burns and his Highland Mary £300-400



- 1060 A 19th Century Mahogany two drawer side table £50-80
- 1061 A leaf painted Pine wall cabinet and two occasional tables £20-40
- 1062 An Edwardian inlaid Mahogany pot cupboard and two small glazed bookcases £30-50
- 1063 A reproduction Mahogany glazed corner cupboard £20-30
- 1064 An Edwardian Mahogany shaped top occasional table £20-40
- 1065 An Oak lead glazed bureau bookcase £50-80
- 1066 An Old Charm style Oak shelf back dresser £50-70
- 1067 A modern Cousins & Matthews five drawer chest with matching dressing table and stool £50-80
- 1068 A pair of Jentique bedside chests and a matching headboard £30-50
- 1069 A modern maroon leather three seater Chesterfield settee with high arch back £140-160
- 1070 A modern maroon leather two seater Chesterfield settee with high arch back £100-120
- 1071 An aesthetic movement ebonised gilt and floral painted sideboard back £70-100
- 1072 An Edwardian Mahogany mirror back sideboard £20-40
- 1073 A rectangular Pine mirror £20-40
- 1074 A modern Pine chest of short over two long drawers £30-50

- 1075 A Mahogany bureau and a tallboy £20-40
- 1076 A cream leather electronic armchair £30-50
- 1077 A 19th Century rectangular wall mirror with a small hanging cabinet £40-60
- 1078 A Victorian carved Oak fire surround with lion head central motif £40-60
- 1079 An Edwardian Satinwood dressing chest £30-50
- 1080 A modern drop leaf table, a hall table and two coffee tables £20-40
- 1081 A modern four tier light Oak effect shelving unit £30-50
- 1082 A modern Pine double bed head £20-40
- 1083 A Mahogany double bed headboard (only) £20-30
- 1084 Two Mahogany china cabinets £20-40
- 1085 An Oak open bookcase £20-40
- 1086 An Oak sideboard £20-40
- 1087 An Edwardian Mahogany marble top washstand with floral tiled back £40-60
- 1088 An Edwardian Walnut mirror door wardrobe £30-50
- 1089 A Mahogany Spencer upright piano £10-20
- 1090 A reproduction Mahogany inlaid and cross banded extending two pillar 'D' end dining table with one extra leaf £30-50
- 1091 A pair of Oak Hepplewhite style elbow chairs and a pair of Mahogany dining chairs £40-60
- 1092 Three modern Venice metal framed bar stools from A Special Night Bed Company £30-40
- 1093 A set of four Victorian Mahogany dining chairs on carved fluted legs and two others £80-120



- 1094 A Victorian Pine farmhouse kitchen table with two drawers (one drawer missing) £50-80
- 1095 A reproduction Mahogany 'D' end dining table and six chairs £30-40

- 1096 A set of four Victorian Mahogany balloon back dining chairs and a stained Oak refectory table with a reproduction nursing chair £60-80
- 1097 An Edwardian Mahogany blue and white polka dot upholstered chaise longue £40-60
- 1098 A painted oval coffee table, a circular cane table, a painted CD cabinet and two stools £20-40
- 1099 A 19th Century Mahogany cottage dining table and a towel rail £40-60
- 1100 A Mahogany china display cabinet £20-40
- 1101 A 1930's Grange Furnishing Stores single door wardrobe and a Mahogany coffee table £30-50
- 1102 A 1930's Walnut dressing table £30-50
- 1103 A vintage garden roller £20-40
- 1104 A fire grate and pair of fire dogs £40-60
- 1104A A small bowl shape concrete urn and statue of a boy £30-40
- 1105 A cane shelving unit and a matching corner unit £20-40
- 1106 A reproduction Mahogany cupboard bookcase £70-100
- 1107 Nils Jonsson: A Rosewood sideboard produced by Troeds, Sweden, c.1960's with twin sliding doors and four central drawers, stamped mark inside the left hand door. CITES Certificate in place for this lot, height 31", width 18" length 87" £400-600



- 1108 A 19th Century Mahogany bar back dining chair £20-30
- 1109 An Oak refectory dining table £50-80
- 1110 A set of six 19th Century part Elm hard seat chairs £300-400



- 1111 An Oak refectory table with acorn bulbous supports £70-100

- 1112 Three Victorian carved Oak dining chairs £20-40
- 1113 A bookcase, an occasional table and a HiFi stand £20-40
- 1114 An Edwardian Mahogany two door bookcase £20-30
- 1115 No lot
- 1116 A pair of Victorian Mahogany bar back chairs, a 1950's china display cabinet and a piano stool £20-40
- 1117 A modern circular breakfast table and four chairs (table top does not match base) £30-50
- 1118 A modern light Oak kitchen table £40-60
- 1119 A pair of bar stools and four beechwood dining chairs £20-30
- 1120 A set of four Edwardian Mahogany dining chairs and four others £30-50
- 1121 An Edwardian inlaid Mahogany single door china cabinet, two no-matching side cabinets and a corner cabinet £30-50
- 1122 A Pine farmhouse table £80-120
- 1123 A reproduction 'D' end dining table and four chairs £20-30
- 1124 A small Oak hall seat, an elbow chair and a Mahogany corner cabinet £20-40
- 1125 A 1930's Burr Maple dining table and four chairs £100-150
- 1126 A set of four Oak barley twist cane back chairs £30-50
- 1127 A pair of Queen Anne style dining chairs and four others £20-30
- 1128 A modern Cherrywood finish oval extending dining table with two leaves and six cane seat and back chairs £50-70
- 1129 A fully glazed shop display cabinet (crack to lower corner on the side) £20-30
- 1130 A narrow Mahogany six drawer chest plus an upholstered nursing chair £40-60
- 1131 An Oak and Walnut ornamental bookcase £20-30
- 1132 An Edwardian carved Mahogany back two door cabinet £50-70
- 1133 A Japanese carved hardwood two tier table £70-100
- 1134 A 19th Century Mahogany cottage dining table £40-60
- 1135 A Mahogany glazed two door bookcase £30-50
- 1136 Two towel rails and a modern pine cabinet with two shelves and single draw £20-40
- 1137 Four modern two drawer bow fronted bedside chests £30-40
- 1138 A Victorian bow front chest of short over two long drawers £70-100
- 1139 A set of six Chippendale style dining chairs £70-100
- 1140 An Edwardian carved Oak armchair £20-40
- 1141 A Victorian Pine blanket chest and a Mahogany standard lamp £20-40
- 1142 A Georgian Pine standing corner cupboard £70-100
- 1143 A Mahogany coal purdonium and a nest of tables £20-30
- 1144 An oval Oak drop leaf dining table with double draws £50-80
- 1145 A 19th Century Elm seat chair and three bentwood and two other chairs £20-40
- 1146 A modern rectangular dining table and four metal framed chairs £30-50
- 1147 A Stag dressing chest and chest of drawers plus two Lloyd Loom style chairs £40-60
- 1148 An Edwardian Oak mirror door and lead glazed wardrobe £40-60
- 1149 A brown leather electric reclining three seat sofa £30-50
- 1150 A nearly new kingsize bed frame and mattress with light fitting to head board and matching TV stand £50-80
- 1151 A single green upholstered tub chair £20-30
- 1152 A large Pine framed mirror £30-40
- 1153 An Ercol style pink upholstered two seat sofa and two Parker Knoll chairs £30-50
- 1154 A single blue floral upholstered nursing chair and a pink floral upholstered armchair £30-50
- 1155 A pale green upholstered day bed £30-50



NOTES

GENERAL CONDITIONS OF SALE

- 1 THE BUYER** - The highest bidder acknowledged as such by the auctioneer will be the buyer. If any dispute arises, the auctioneer shall have absolute discretion to settle the matter. The auctioneer shall rule the bidding and no bid shall be retracted. The auctioneer reserves the right to refuse any bid. The bidder in the room who is successful in purchasing any lot or lots is entirely responsible for paying for such lot or lots in accordance with our general conditions of sale. Purchases made on behalf of a third party are entirely the responsibility of the bidder in the room. The auctioneer reserves the right to bid on behalf of the vendors for any lot and to withdraw, consolidate or divide any lot or lots.
- 2 REGISTRATION** - To assist the progress of sale, all prospective buyers must register their name and address at reception and collect a bidding number before the sale commences. Should there be any doubts as to price or buyer, please draw the auctioneer's attention to it immediately.
- 3 BUYER'S PREMIUM** - A buyer's premium of 17% plus VAT at the standard rate of the hammer price is payable on each lot.
- 4 VENDOR'S COMMISSION** - Our standard Vendor's commission of 14% plus VAT will be charged up to £1000 - rate negotiable prior to sale. In addition, each lot will be subject to a lotting fee of £3 plus VAT.
- 5 PURCHASE VIA LIVE BIDDING** - Any lots purchased via the saleroom.com live auction service will be subject to an additional 3% commission charge plus VAT at the current rate imposed on the hammer price. In completing the bidder registration on www.the-saleroom.com and providing your credit card details and unless alternative arrangements are made with Durrants you hereby agree to the following terms:
 - a) Durrants are authorised to charge the credit/debit card given in part or full payment including all fees for items successfully purchased in the auction via the sale-room.com, and
 - b) You are authorised to provide these credit/debit card details to Durrants through www.the-saleroom.com and agree that Durrants are entitled to ship the goods to the cardholder name and address provided in fulfilment of the sale.
- 6 VALUE ADDED TAX** - Lots on which Value Added Tax may be payable by the buyer on the "hammer price" are indicated in the catalogue by a symbol beside the lot number. The buyer shall pay any VAT which may be due on any amounts owed by the buyer under these conditions of sale at the rates prevailing on the day of the auction.
- 7 AUCTIONEERS MARGIN SCHEME** - The Auctioneers Margin Scheme allows auctioneers to sell items without VAT on the hammer price. Under the margin scheme an amount equivalent to VAT at the current rate is added to the buyer's premium. This amount cannot be refunded. The VAT element will not be shown separately on the buyer's invoice.
- 8 PAYMENTS**

Purchaser - Our methods of payment are with bank transfer, cash, debit or credit card (in person only) or by cheque supported by a valid guarantee card or bankers reference. All purchases must be paid in full on the day of the sale before any lot is removed from the premises. No goods will be released to buyers unknown to the auctioneers without adequate reference or before their cheques have cleared. Anyone who, for whatever reason, is unable to pay for their goods on the day of the sale must inform the Saleroom Manager as to when payment will be made. There is a 2% surcharge on credit card payments.

Vendor - Vendors will normally receive proceeds of sale 10 working days after. However, where individual consigned Lots have sold for £500 or above Durrants reserve the right to hold payment until we have been paid by the purchaser. We also reserve the right to rescind a sale, if it is clear that having pursued all the usual channels Durrants are unlikely to receive payment on the Lot in question. In such circumstances, the Lot(s) involved will be reoffered in a later Sale with the sale reserve (if applicable).
- 9 ATTRIBUTION AND CONDITION OF LOTS** - Every effort is made to ensure the accuracy of any statement as to authorship, attribution, origin, date, age, provenance and condition of any lot whether or not such statement forms part of the description of any such lot. Whether any such statement is made orally or in the catalogue it is an expression of opinion. Each buyer by making a bid for a lot acknowledges that he has satisfied himself fully as to the attribution and condition of the lot. If any damage is done to any lot at the viewing or before, during or after the sale, such damage shall be made good by the person committing such damage, principals being responsible for the acts of their servants, such damage to be assessed by the auctioneers. Written condition reports are available for all Lots upon request. Buyers that do not request condition reports forfeit their right to a refund, except where we are in breach of Contract.

Verbal condition reports will not be given. The latest that a condition report will be e-mailed, posted or faxed is the day immediately before the sale.
- 10 ATTRIBUTION OF PICTURES** - (Condition 7 also refers).
 - (a) The forename(s) (or asterisks where not known) and surname of the artist indicates in our opinion a work by the artist
 - (b) The initials of the forename(s) and the surname of the artist indicates in our opinion a work of the period of the artist which may be wholly or in part his work.
 - (c) The surname of the artist indicates in our opinion a work of the school or by one of the followers of the artist or in his style and of uncertain date.
 - (d) Bears signature indicates in our opinion that this is not the signature of the artist.
 - (e) All other terms are self-explanatory.
- 11 OWNERSHIP OF PURCHASES** - The ownership of the lot(s) purchased will not pass to the buyer until the buyer has paid the auctioneers in full the total amount due and the auctioneers have applied such payment to the lot.
- 12 TRANSFER OF RISK** - Each lot shall be at the purchaser's sole risk from the fall of the hammer and shall be sold with all faults and imperfections. The purchaser is deemed to have inspected the lots and satisfied himself as to their condition. The liability to insure any purchased Lot shall pass from the auctioneer to the purchaser on the fall of the hammer.
- 13 COMMISSION BIDS** - If instructed, the auctioneers will execute bids and advise prospective purchasers. This service is free. Lots will always be purchased as cheaply as is allowed by such other bids and reserves as are on the auctioneer's books. In the event of identical bids, the earliest will take precedence. There must always be a maximum limit indicated, i.e. the amount to which you would bid if you were attending the auction yourself. "Buy" or unlimited bids will not be accepted. Commission bids placed by telephone are accepted at the client's risk. We do accept commission bids by facsimile. We urge our clients to place such commission bids within one hour of the close of the view day.
- 14 TELEPHONE BIDS** - Requests for telephone bidding must be registered with the Saleroom Manager within one hour of the close of the view day. It may not be possible to accept requests on sale days. Written confirmation of such bids from persons unknown to the auctioneers must be received before the commencement of the sale. Whilst every effort will be made to execute telephone bidding, the auctioneers cannot be held responsible for any default or neglect in connection with this service. All such arrangements therefore are made entirely at the prospective buyer's risk.
- 15 COLLECTION OF GOODS** - At the purchaser's sole cost and expense, the purchaser shall collect the lot(s) purchased not later than 12 mid-day after the day of the auction, not before payment to the auctioneers of the total amount due. After 5 working days, storage charges of £2 + VAT per day per lot will apply to any goods that have not been collected.
- 16 POSTAGE / SHIPPING** - Goods will not be released to couriers unless they are delivering to the address that the buyer has used for registration. Couriers are instructed not to take alternate delivery instructions once dispatched
- 17 COMPLIANCE** - Upon failure of any purchaser to comply with any of the above conditions any money deposited by the purchaser in part payments shall be forfeited to the owner of the lot, he paying there from, all just expenses. Any lot not paid for within 1 month of the purchase date shall be resold by public auction or private contract and the deficiency (if any) arising from such a resale together with all expenses attending the same shall be made good by the defaulter at this sale who shall have no claim to any surplus which may arise on a resale.
- 18 PRE SALE ESTIMATES** - Given by the auctioneers or a member of their staff are their opinion as to what they consider any particular lot is likely to realise. However any lot may sell at a figure less than the lower estimate and for more than the higher estimated figure. The auctioneers and their staff reserve the right to alter their pre-sale estimates, either upwards or downwards, on any lot at any time, up until such time as the lot is offered for sale.
- 19 RESERVES** - The auctioneers and vendors reserve the right:
 - (a) To remove the reserve completely from a previously reserved lot at any time up until it is offered for sale.
 - (b) To place a reserve on a previously unreserved lot at any time up until it is offered for sale.
 - (c) To alter a reserve, either upwards or downwards, on any lot at any time up until it is offered for sale.
 - (d) Should any item fail to sell at the reserve price on the day of the Auction they will be subject to commission of 3% of the Reserve Price, subject to a minimum fee of £5 plus VAT.
- 20 THIRD PARTY LIABILITY** - Every person on the auctioneers' premises before, during or after a sale or at any other time, shall be deemed to be there at their own risk and shall have no claim against the auctioneer in respect of any injury they may sustain or any accident which may occur.
- 21 ANY NOTICES** - Any notices that may be displayed from time to time by the auctioneers in the sale ground or salerooms shall be deemed to form part of and be included within the general conditions of sale.
- 22 MONEY LAUNDERING REGULATIONS** - In order to comply with current anti-money laundering legislation we are unable to accept cash payments over £8,000. Any purchaser wishing to pay cash for any purchase over £1,000 may be asked for identification e.g. Passport or photo driving licence.
- 23 DROIT DE SUITE ROYALTY CHARGES** - in essence this charge will be made to the purchaser of any work of art that has been produced by a living artist or for a period of up to 70yrs after the artist's death, on lots with a hammer price more than the UK sterling equivalent of €1,000. Please refer to www.dacs.org.uk for further rules and current exchange rates. The royalty charge will be added to purchase invoices and must be paid before items can be cleared. All Royalty charges are paid to the Design and Artists Copyright Society (DACS) by the Auctioneers and no handling costs or additional fees with respect to these charges will be retained by the Auctioneer.
- 24 RICS REGULATION**
 - a) All Clients monies are paid into our Auction Clients Account with Barclays Bank PLC Norfolk Business and Agricultural Corporate Banking Centre, Norwich, Norfolk (any interest accrued monies held will be retained by Durrants)
 - b) Durrants operates an RICS approved complaints policy, details can be found on our website www.durrants.com
- 25 RESCISSION** - Notwithstanding any other terms of these Conditions, if within fourteen days of the date of sale Durrants receive from the buyer of any lot notice in writing that in his view the lot is a deliberate forgery and the lot is returned to them in this period in the same condition as at the time of sale and produces written evidence, the burden of proof to be upon the buyer, satisfies Durrants that considered in the light of the entry in the catalogue the lot is a deliberate forgery then the sale of the lot will be rescinded. The purchase price will be refunded once the sum has been returned to Durrants by the Seller.

If before the proceeds of the sale have been paid to the Seller Durrants receives notice from the buyer that, in the buyers view the sale should be rescinded and Durrants agrees with that view, Durrants will rescind the sale and refund to the Buyer any amount paid to Durrants in respect of the Lot, and if such notice is received after payment of the proceeds of this sale the Seller will on notice reimburse Durrants to the full amount of the sum refunded to the Buyer.
- 26 REPRODUCTIONS** - Owing to the large number of Third Reich and other uniforms and accoutrements being used for films, television and plays, it becomes increasingly difficult to ascertain the authenticity of certain pieces. We catalogue all items as seen, and offer no guarantee as to their authenticity. The terms 'bronze', 'silver' and 'gold' refer to the grades in which medals, badges, etc., were awarded and not to their composition. Items described as (PATTERN) are an example of the described item with no guarantee of age or authenticity

BUYER REGISTRATION FORM

Please enter the information required below before taking it to a member of staff. Please ensure that you have a suitable form of identification to verify the information you are giving, e.g. driving licence, utility bill etc. Once you have done this you will be issued with a card and this will have your buyer's number on it

Mr / Mrs / Miss / Other:	_____	Initials:	_____	Surname:	_____
Company	_____				
Address	_____				

Tel:	_____				
Mobile:	_____				
E-mail:	_____				
Credit / Debit Card No:	_____				
Start Date:	_____	Expiry Date:	_____	Security Code:	_____

Where a buyer is registering for the first time and leaving a commission bid the auctioneers reserve the right to undertake a credit card transaction using the details which have been supplied if the purchase is successful.

For Office Use Only
Buyers Registration Number: -

DURRANTS AUCTION ROOMS

The Old School House, Peddars Lane, Beccles, Suffolk, NR34 9UE

Tel: 01502 713490 Fax: 01502 711039

Email: auctionrooms@durrants.com

Web: www.durrants.com



DIRECTIONS

FROM A12/A145 (SOUTH)

On entering Beccles, at the first set of traffic lights turn right into Peddars Lane. The Auction Rooms are 200 metres along the road on your right.

FROM A143/A146 (BURY ST EDMUNDS & NORWICH)

Approaching Beccles, at the McDonald's roundabout, go straight over, then take the first right via Gillingham over the bridge into Beccles. Follow the road past the new Tesco, go straight at the first set of traffic lights, right at the second and the Auction Rooms are 100 metres on your left.

FROM A146 (LOWESTOFT)

At the Worlingham roundabout bear left through Worlingham. At the first set of lights go straight over, at the second turn left and the Auction Rooms are 100 metres on your left.

WWW.DURRANTS.COM

BECCLES
01502 712122

10 New Market
Beccles
Suffolk
NR34 9HA

DISS
01379 642233

Pump Hill House
2b Market Hill
Diss, Norfolk
IP22 4WH

HARLESTON
01379 852217

32-34 Thoroughfare
Harleston
Norfolk
IP20 9AU

SOUTHWOLD
01502 723292

98 High Street
Southwold
Suffolk
IP18 6DP

HALESWORTH
01986 872553

12 Thoroughfare
Halesworth
Suffolk
IP19 8AH

AUCTION ROOMS
01502 713490

The Old School House
Peddars Lane
Beccles, Suffolk
NR34 9UE

MAYFAIR
0870 112 7099

Cashel House
15 Thayer Street
London
W1U 3JT