

DURRANTS

SINCE 1853

RESIDENTIAL
AGRICULTURAL
COMMERCIAL
ON SITE AUCTIONS
PROPERTY MANAGEMENT
BUILDING CONSULTANCY
AUCTION ROOMS
HOLIDAY COTTAGES



Friday 28th October 2016

Antiques and Fine Art commencing 10.00am

Furniture plus Courtyard commencing at 1.00pm



ANTIQUES AND FINE ART WITH JEWELLERY,
SILVER AND FURNITURE

Tel: 01502 713490 Fax: 01502 711039

WWW.DURRANTS.COM

Catalogues

£3.00

RICS ACCREDITED VALUERS AND AUCTIONEERS

NOTES FOR PROSPECTIVE PURCHASERS

DURRANTS AUCTIONEERS AND VALUERS

Durrants' experience of Auction Sales dates back to 1853 and since that time we have continued to undertake chattel sales and valuations throughout Norfolk and Suffolk.

From our Auction Rooms at Peddars Lane, Beccles we conduct Fine Art and Antique Auction Sales every month, interspersed with Specialist Sales.

Our team of Valuers and Auctioneers undertake valuations for probate and insurance purposes and provide advice for sale and family division.

RICS accredited Valuers and Auctioneers

OUR SERVICE

With our own salerooms, experienced staff and removal vehicles we are able to offer a comprehensive and cost effective service to executors, solicitors and private clients.

- On site inspections at short notice by appointment
- Experienced valuers throughout the group
- Verbal advice or comprehensive reports
- Professional and confidential service
- Specialist valuations of furniture, ceramics, pictures, silver, jewellery, clocks and watches, books, toys and dolls, stamps, postcards, coins, Militaria, swords, medals Sporting Guns and Antique Firearms

Durrants has offices in Beccles, Halesworth, Southwold, Harleston and Diss. Each has a team of experienced Chartered Surveyors and Estate Agents, offering a wide range of services encompassing Agricultural, Residential, Commercial and Investment properties. We also have a specialist Planning and Design Group.

FIREARMS

We have full R.F.D. capabilities enabling us to sell on your behalf all items that require licences. Our registered Firearms Dealership Number is Suffolk 252. We are always happy to help with any firearm queries, legal requirements or valuations.

VIEWING

The Viewing days for the Friday 28th October Antiques and Fine Art with Jewellery and Silver are:-

Tuesday 25th October between **9am and 5pm**

Wednesday 26th October between **9am and 5pm**

Thursday 27th October between **9am and 7.30pm**

The morning of the sale from 8am

SALE DAY TIMETABLE

The antiques sale starts at 10.00am in the upstairs saleroom at Lot 1.

There will be no lunch break during the course of the day.

Clearing is allowed during the sale in the upstairs saleroom.

The furniture sale starts at 1pm at Lot 1001 in the ground floor saleroom.

SUMMARY OF CATALOGUE

China, Glass, Clocks, Pictures, Wood, Metal,
Pottery and Porcelain, Objects Vertue, Silver,
Jewellery and Watches

Lots 1 – 561

Furniture and Courtyard

Lots 1001 - 1212

Missing Lot numbers – 539

For further images please visit www.durrants.com or www.the-saleroom.com/durrants

FORTHCOMING EVENTS

**FREE VALUATIONS AND TAKING IN OF GOODS MONDAY TO FRIDAY
BETWEEN 9AM - 5PM (EXCEPT SALE DAY) AND ALSO EVERY
SATURDAY MORNING BETWEEN 9AM - 12 NOON**

**PLEASE NOTE:
THE FOLLOWING SALE DATES IN RED HAVE BEEN REVISED**

AUCTION CALENDAR 2016

Friday 28th October - Antiques and Fine Art with Jewellery and Silver

Friday 18th November - Antiques and Fine Art with Jewellery and Silver

Thursday 1st and Friday 2nd December - A two day sale of Toys, Collectables, Militaria, Medals,
Sporting Guns and Firearms etc

Friday 16th December - Antiques and Fine Art with Jewellery and Silver

These dates may be subject to change – please contact us during the year to ensure you don't miss out!

VIEWING

Antique and Fine Art Sales are on view the week of the sale - Tuesday and Wednesday 9am-5pm
and Thursday 9am-7.30pm, or by appointment.

Toy, Collectable and Militaria Sales are on view the week of the sale - Tuesday 9am-5pm,
Wednesday 9am-7.30pm and Thursday 8am-10am and 3pm-7.30pm
(no viewing when the auction is in progress on the Thursday), or by appointment.

All Auction catalogues, photographs, particulars and results are available online at www.durrants.com

We are also happy to carry out additional and one off sales on site or at our Sale Rooms by arrangement.
House clearances by arrangement.

For further information please call:

Mark Whistler ANAVA Auction Rooms Manager,
Specialist Militaria, Firearms and Furniture Valuer
01502 713490 or mark.whistler@durrants.com

Beverley Baker Assistant Manager and
Head of Administration
01502 713490 or auctionrooms@durrants.com

Robert Pearse Valuer for Stamps, Postcards,
Collectables, Ceramics, Books and Watches
01502 713490 or auctionrooms@durrants.com

James Felgate MNAVA Valuer and Photographer
01502 713490 or auctionrooms@durrants.com

Anna Paulding ANAVA Auction Administrator /
House Clearance Coordinator
01502 713490 or auctionrooms@durrants.com

Karen Goring Auction Administrator
01502 713490 or auctionrooms@durrants.com

ONLINE BIDDING

We have teamed up with the-saleroom.com to allow you to bid at our auctions.
Simply register on www.the-saleroom.com/durrants under Live Auctions.

Bid online at our auctions through
the-saleroom.com

**CHINA, GLASS, CLOCKS, PICTURES,
WOOD, METAL, POTTERY, PORCELAIN,
OBJECTS VERTUE, SILVER, JEWELLERY
AND WATCHES**

Lots 1 – 561

**Lots 1 - 250E – A LARGE COLLECTION
OF CERAMICS, CHAIRS AND
18TH/19TH CENTURY CARICATURES FROM
A LOCAL COLLECTORS ESTATE**

- 1 A Brass column oil lamp with green glass font and etched globe £40-60
- 2 Various horn handled and other cutlery, a Mahogany rolling pin etc £30-40
- 3 A pair of 19th Century Silver plated coasters with grape and vine decoration and lion inner boss, marked I.F.S. £40-60



- 4 A pair of early 19th Century Silver plated on Copper coasters, a Silver plated wine funnel and other items £40-60
- 5 A Victorian Brass paper clip in the form of a bird of prey's head £40-60
- 6 A Victorian Brass Mr Punch, a candlestick and shoe horn in the form of a tennis racquet £30-50
- 7 A 19th Century French Empire style ebonised mantel clock with floral inlays supported by four barley twist columns £150-250



- 8 A Victorian Keeling & Co., Essex patterned dinner set (two boxes) £50-70
- 9 A milk glass oil lamp, other glass including decanters, cruet set etc (two trays) £40-60
- 10 Two 19th Century white and gilt tea sets £40-60
- 11 Four Victorian Willow pattern meat plates including Davenport £20-40
- 12 Mainly various 19th Century blue and white china £30-50

- 13 A 19th Century Rockingham style gilt and apple green tea set £60-80
- 14 A 19th Century Miles Mason two man Willow pattern tea and dinner set (two trays) £50-80
- 15 Various 19th Century blue and white china (two trays) £40-60
- 16 An early cobalt blue and one man Willow pattern plate plus other 19th Century blue and white china £20-40
- 17 Various 19th Century blue and white mugs including Tiger Hunt, pickle dishes and other china (some damage) £20-40
- 18 Six 19th Century blue and white mugs including Tiger Hunt (some damage) £20-40
- 19 A 19th Century apple green and gilt coffee set and plates £20-40
- 20 Various 19th Century teawares (two trays) £20-40
- 21 A 19th Century floral tea set and three pink lustre cups and saucers £20-40
- 22 Various items of 19th Century stoneware including storage jars (two boxes) £20-40
- 23 Various 19th Century stoneware and slipware including storage jars, a colander etc (two boxes) £20-40
- 24 An 18th Century Bellamine jug and five various flagons £40-60
- 25 A 19th Century stoneware spouted jug, one other and two large tavern jugs (as found) £40-60
- 26 Four 19th stoneware tavern mugs (some as found) £40-60



- 27 Nine various 19th Century stoneware tavern mugs (some as found) £20-40
- 28 Two 19th Century stoneware tygs, two tobacco jars and two tankards (some as found) £30-40
- 29 A graduated pair of 19th Century stoneware Bacchus jugs and a jug with Royal Coat of Arms and portraits, Stephen Green Lambeth (some cracks) £50-70
- 30 Various 19th Century stoneware including tavern mugs, tobacco jar and a jug decorated with children astride a frog (cracked) £30-50

- 31 A large 19th Century stoneware harvest jug, one other and two tobacco jars £40-60
- 32 An early 19th Century tea set with tea bowls decorated with cornflowers £30-50
- 33 Five 19th Century Copeland parrot decorated plates and various others including pink lustre, Whieldon etc (some as found) £40-60
- 34 A 19th Century faience charger with blue and yellow floral decoration, K.G., mark dia 13" £30-50
- 35 A 19th Century continental porcelain wall plate, blue ground with mother and child painting, dia 12" £40-60



- 36 A 19th Century continental porcelain wall plate decorated with a courting couple having a picnic £30-50
- 37 A 19th Century continental porcelain charger with landscape and butterfly decoration, dia 16" £50-70
- 38 A 19th Century continental porcelain fruit seller and six other figurines £30-50
- 39 A pair of early 19th Century pearlware putto and Victorian Staffordshire organ grinder with monkey (all repaired) £20-40
- 40 An 18th Century pulpit group, "The Vicar and Moses", incised signature Ralph Wood 1794, height 9" (repair to pulpit back) £70-100
- 41 A Bloor Derby floral encrusted vase and cover (restored) and a pair of opaque china floral goblets £20-40
- 42 A pot lid, 'The Late Prince Consort' and faience plus other china £20-40
- 43 A pair of Grainger Worcester dolphin and shell dishes plus a Copeland Garrett shell decorated pen stand £40-60
- 44 Two 19th Century treacle glazed teapots with relief figure decoration and a flask £50-70
- 45 Thirteen various 19th Century blue and white chinoiserie decorated tea bowls £40-60
- 46 Ten various 19th Century pottery tankards including a frog mug (all as found) £30-50
- 47 A late 18th Century Naples white glazed figure of a gentleman, height 8" £50-70

- 48 A pair of 19th Century porcelain floral encrusted moon vases and a floral encrusted bowl (handle repair) £40-60
- 49 An unusual pair of Whieldon style puzzle jugs with floral appliques and green encrustation (one as found), height 9" £30-50
- 50 A large 19th Century J&R Godwin Mr Pickwick decorated tyg (cracked) and mottled treacle glazed jug (rim chips) £30-50
- 51 A large Amhurst blue and white floral bowl and two Victorian teapots £30-40
- 52 Five Victorian copper lustre jugs and two stoneware harvest jugs (some as found) £40-60
- 53 Two Sunderland pottery lustre jugs, one with Iron Bridge and mottos, the other decorated with a ship, William IV (both cracked) £20-40
- 54 A large 19th Century pink lustre ale jug with floral decoration and motto plus four others (some as found) £30-50

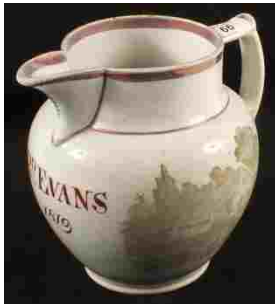


- 55 Two 19th Century Prattware style pottery jugs with figure, floral and dog decoration and two silver resist lustre jugs, one with manganese house and landscape vignettes (all as found) £20-40
- 56 Six various 19th Century pottery jugs (all as found) £20-40
- 57 Five various 19th Century pottery jugs and an equestrian tankard (all as found) £20-40
- 58 A 19th Century Masons dragon decorated jug and five others (some as found) £30-40
- 59 A 19th Century pottery boar hunting jug with dog handle and five others (all as found) £20-40
- 60 Two 19th Century canary yellow jugs with fruit, floral and landscape decoration (as found) £20-30
- 61 A Victorian James Dixon lidded floral and butterfly jug and five others £30-40
- 62 A 19th Century black printed Sir Robert Peel jug and "Matrimony and Courtship" character printed jug (both cracked) £30-50

- 63 Two 19th Century pottery jugs with pineapple moulding (as found) plus one other brown and floral £20-40
- 64 A 19th Century Masons style ironstone jug with dragon handle, height 8" £40-60



- 65 Three 19th Century ironstone blue ground jugs and a bowl £30-50
- 66 A 19th Century pink lustre jug with puzzle handle, printed designs, Claremont Cottage inscribed R.D. Evans, 1819, height 7" £30-50



- 67 A 19th Century Coalport floral jug (restored lip) and three other jugs (as found) £30-40
- 68 Two 19th Century Prattware style jugs, Admiral Nelson (body crack), Duke of Wellington and General Hill (small base rim chip) £70-100
- 69 A 19th Century Majolica lidded jug with relief boy and dog decoration and a blue Jasperware lidded jug (light base crack) £40-60
- 70 A 19th Century Stourbridge "Mosaic" lidded jug, one other in black with applied cherub decoration plus one other with blue body and floral and lion mask decoration £30-50
- 71 Three various 19th Century stoneware rural scene jugs (two cracked) and a small white glazed tavern jug (light base crack) £20-40
- 72 Two 19th Century stoneware buff ground jugs with relief hunting scene decoration and serpent handle and spout (one cracked) £30-50
- 73 A 19th Century pale green stoneware jug with relief fox and hounds decoration with fox handle £40-60
- 74 Five various 19th Century stoneware jugs (all as found) £20-40

- 75 A graduated pair of 19th Century buff ground stoneware jugs with relief mask, floral and raised decoration and caryatid handles £40-60
- 76 A 19th Century buff ground stoneware jug with raised tavern scene decoration and horse head handle plus one other with hunting scene (cracked handle) £30-40
- 77 A 19th Century buff ground stoneware jug with raised leaf decoration and mask spout plus a Brownfield jug with Royal Coat of Arms and one other with relief daisies £40-60
- 78 A salt glazed stoneware pewter lidded ewer with mauve ground and stylised floral decoration 18th/19th Century plus a jug with blue and manganese decoration (both cracked) £50-80
- 79 Various items of 19th Century Jackfield ware including cream jugs (all as found) £20-40
- 80 An early 19th Century Basalt coffee pot with widow on dustbin finial and Jackfield floral sucrier and cream jug £30-40
- 81 Two 19th Century Jackfield teapots (as found) £20-40
- 82 Two 19th Jackfield floral teapots £40-60
- 83 Three 19th Century Jackfield floral teapots £50-80



- 84 A 19th Century Rockingham style blue and floral teapot plus two Victorian blue and white printed pots (one cracked) £40-60
- 85 A Victorian blue ground chinoiserie teapot, one white glazed with swan finial plus one other with relief hunting scene (all as found) £20-40
- 86 A 19th Century Rockingham style white and gilt teapot £30-50
- 87 A 19th Century white and gilt teapot with presentation inscription plus one other with pewter lid £30-50
- 88 A Victorian copper lustre teapot plus two others, white and treacle glazed £20-40
- 89 A 19th Century Dudson blue fern and floral decorated teapot plus one other with applied classical figure decoration £40-60

- 90 A 19th Century pottery coffee pot with relief floral decoration and pewter lid plus a brown stoneware coffee pot with applied floral decoration (both as found) £20-30
- 91 A 19th Century Dudson white glazed pewter lidded teapot, one other with relief leaf and floral decoration (cracked) plus one Castleford style with figure and floral decoration £40-60
- 92 Three 19th Century Castleford teapots, relief figure decoration, head and arms floral plus child and floral (all as found) £50-70
- 93 An 18th Century Liverpool teapot plus one other with two man willow decoration (both as found) £30-50
- 94 A 19th Century blue and white chinoiserie teapot £20-40
- 95 A Victorian pottery Toby jar and cover, Toby jug plus two Cooper & Co Josiah Wedgwood jugs £20-40
- 96 Four similar 19th Century pottery Janus head jugs (some damage) £50-70
- 97 Two 19th Century pottery mask jugs (both as found) £30-50
- 98 Two 19th Century pottery mask jugs, one silvered rim, the other pink lustre £60-80
- 99 Three 19th Century stoneware mask jugs, one of female form £80-120



- 100 A Stephen Green Lambeth brown glazed mask jug £50-80
- 101 A 19th Century George Skey Tamworth brown glazed jug of a Naval Officer (as found) £30-50
- 102 A pair of 19th Century Punch and Judy mask jugs £30-50
- 103 A 19th Century Bacchus mask frog jug, height 5" £80-120
- 104 A 19th Century creamware Bacchus mask jug, height 5 1/2" (light top rim chips and base crack) £40-60
- 105 A 19th Century pearlware Bacchus mask jug, height 4" £50-80
- 106 A 19th Century creamware Bacchus mask jug, height 4 1/2" £70-90
- 107 A 19th Century pearlware Bacchus mask jug, height 4" £50-80

- 108 A 19th Century pearlware blue painted Bacchus mask jug, height 4" (light top ring chips and hairline crack) £40-60
- 109 Three 19th Century pottery mask jugs (all as found) £30-50
- 110 A 19th Century Chinese export black lacquer and gilt tea caddy with pewter compartments, the inside lid inscribed 'Penelope Mary Petrie' £80-120



- 111 A 19th Century Imari charger, plate and other Japanese china £40-60
- 112 A 19th Century Chinese globular vase with green stippled ground, floral and vase vignettes, height 11" £200-300



- 113 Three Chinese turquoise glazed Dogs of Fo (all as found), max height 8 1/2" £100-150
- 114 A pair of 19th Century Chinese buff glazed Dogs of Fo (light damage), height 11" £100-200



- 115 An 18th Century Chinese famille rose cup, a floral saucer (hairline crack) and a blue and white tea bowl £20-40
- 116 An 18th Century Chinese Willow pattern teapot (light chips to rims and cover hairline cracks), height 6" £50-80
- 117 An 18th Century Chinese blue and white chinoiserie teapot (as found), height 7 1/2" £30-50
- 118 An 18th Century Chinese floral teapot with strap handle and fruit finial (light cover and spout chips), height 5" £50-80

- 119 A 19th Century Chinese green ground teapot with Kylin handle, spout and finial and floral vignettes £100-200



- 120 Five 19th Century Staffordshire porcelain and pottery Toby cruet pieces (two as found) £50-80
- 121 A 19th Century treacle glazed snuff taker Toby jug £20-40
- 122 A 19th Century salt glazed snuff taker Toby jug (hat repair) £20-40
- 123 Two 19th Century white glazed ale quaffing Toby jugs £30-40
- 124 A 19th Century treacle glazed jug inscribed 'Wellington died Sep 14 1852' (light base chip and hat repair), height 7" £30-50
- 125 Two 19th Century Toby teapots (one as found) £50-70
- 126 A 19th Century Rockingham style blue floral teapot £20-40
- 127 A pair of 19th Century green glazed male and female figure jugs in penitent pose (one light spout chip) £40-60
- 128 Two 19th Century Mr and Mrs Punch jugs (light damage) £50-70



- 129 Two 19th Century ale quaffing Toby jugs (as found) £20-40
- 130 Two 19th Century ale quaffing Toby jugs (as found) £20-40
- 131 Two 19th Century ale quaffing Toby jugs (as found) £20-40
- 132 A 19th Century Mr Pickwick jug (some glaze loss) £30-40
- 133 Two 19th Century ale quaffing Toby jugs (one chipped hat) £50-70
- 134 Two 19th Century brown and blue glazed jugs, one ale quaffing, the other holding a hare (both with chipped hats) £40-60
- 135 A 19th Century jug in the form of a watchman with lantern (cracked) £20-40

- 136 Two 19th Century ale quaffing Toby jugs (one hat repair) £50-70
- 137 A 19th Century ale quaffing Toby jug with inscription, 'Home Brewed Ale' £40-60
- 138 A 19th Century ale quaffing Toby jug (glaze cracks) £40-60
- 139 A 19th Century Naval Officer jug (heavily restored) £20-40
- 140 A 19th Century brown and green glazed gentleman jug with Caryatid handle £50-80
- 141 A 19th Century ale quaffing Toby jug, man with pipe (hat repair) £20-30
- 142 A 19th Century ale quaffing Toby jug £50-80
- 143 A 19th Century Yorkshire style ale quaffing Toby jug with Caryatid handle £70-100
- 144 A 19th Century Yorkshire style ale quaffing Toby jug (hat repaired) £30-40
- 145 A 19th Century Yorkshire style ale quaffing Toby jug £50-70
- 146 Two 19th Century Silver plated on Copper tea caddies £40-60
- 147 An 18th Century Liverpool tea caddy (as found) plus a printed two man willow caddy £40-60
- 148 An 18th Century pearlware two man willow tea caddy (light damage) £40-60
- 149 An 18th Century Westwold stoneware jug with G.R. cypher, height 5 1/2" £100-150
- 150 An 18th Century slip glazed blue floral jug (base and rim chips), height 6" £40-60
- 151 A 19th Century salt glazed lidded tankard in the form of a portly woman painted in blue and manganese, height 7" £50-70
- 152 A 19th Century Dutch Delft tea caddy with gilt metal cove and pierced cladding, A K mark, height 5" £50-80
- 153 A 19th Century Dutch Delft tea caddy with lake scene decoration, A K mark, (light chips) £30-50
- 154 An 18th Century Dutch Delft figure and landscape vase, B P mark, (light chips), height 8" £40-60
- 155 An 18th Century Dutch Delft vase with fisherman decoration, Hatchet mark (top rim repair), height 9" £40-60
- 156 An 18th Century Dutch Delft vase with peacock decoration, height 8" £50-80
- 157 An 18th Century Dutch Delft vase with floral decoration (light chips), P mark, height 9" £50-80
- 158 An 18th Century Dutch Delft vase with figure and landscape decoration (cracked), height 9" £30-50

- 159 An 18th Century Dutch Delft vase and cover with floral decoration, L P Kan mark, height 12" £60-80
- 160 An 18th Century Dutch Delft polychrome floral vase with flags and inscription with cover (cover as found), height 8" £40-60
- 161 An 18th Century Dutch Delft onion vase with multiple figure decoration, M E S mark, (small top rim chip), height 11" £70-100
- 162 An 18th Century Dutch Delft moon flask with figure and landscape decoration, height 9" £80-120
- 163 An 18th Century English Delft floral plate (rim chips) £50-70
- 164 An 18th Century English Delft floral plate (cracked) £30-50
- 165 An 18th Century English Delft landscape plate (light crack and rim chips) £40-60
- 166 An 18th Century English Delft plate with fisherman and house decoration (repaired crack) £40-60
- 167 An 18th Century English polychrome Delft plate with bird and floral decoration (crack and rim chips) £40-60
- 168 An 18th Century English Delft floral plate (crack and restored rim) £30-50
- 169 An 18th Century Dutch Delft polychrome floral plate, the peacock mark, (rim chips) £50-70
- 170 An 18th Century English Delft floral plate (cracks and rim chips) £40-60
- 171 An 18th Century English Delft floral charger, dia 13" £100-150
- 178 A pair of blue and white Prince Hoare prints from Popes Essay on Man, Childhood and Youth, 14" x 12" £40-60
- 179 An early 19th Century colour political print, Mutual Honors at Tilsit, or The Monkey The Bear and The Eagle Pub Walker, 1807, 9" x 13" £80-120
- 180 A 19th Century coloured print, The Village School in an Uproar, 8" x 12" £50-80
- 181 Four 18th Century Carrington Bowles prints, A Bailiff and Attorney a Match for the Devil, A Lawyer and His Agent, Welladay is this my Son Tom, Heyday is this my Daughter Anne, 6" x 4" and 6 1/2" x 5" £70-100
- 182 Two 18th Century black and white Van Ostad prints, Le Boulanger Flamand and Le Grivois Flamand, 10" x 7" £30-40
- 183 A 19th Century Cruickshank coloured political print, A Patriot Luminary Extinguishing Noxious Gas, 1817, 10" x 13" £80-120
- 184 An 18th Century coloured print, The Triumphal Entrance of a Peck Loaf into Grantchester, 10" x 10" £40-60
- 185 Two 19th Century coloured Dighton military prints, A First Rate Man of War Taken from the Dockyard Plymouth 1809 and An Officer of the 10th Prince of Wales Hussars Taken from Life, 11" x 8" and 14" x 9" £150-200



- 172 An 18th Century Dutch Delft bird and floral charger (repaired crack), dia 13" £50-70
- 173 An 18th Century Dutch Delft polychrome landscape charger (crack and rim chips), dia 13" £50-80
- 174 An 18th Century creamware house and landscape plate (light crack) £30-50
- 175 An 18th Century pearlware house and landscape plate £40-60
- 176 A 19th Century Mahogany wall mirror and an oval gilt mirror £20-30
- 177 An alphabet sampler by Fanny Frances May, 1828, 7" x 8" £40-60



- 186 Three 19th Century coloured political prints, The Catholic Triumvirate 1830, Repose 1829 and A Legal Point or Cedant Arma Togae, monogram H.B., 14" x 10", 10" x 14" and 9" x 10" £90-130
- 187 A 19th Century A. Sharpshooter coloured political print, Civic Combatants 1829, 9" x 13" £30-50
- 188 Two 19th Century coloured political prints, one by M. West, Parceling Out John Bull and three Plagues of Europe, 11" x 15" £80-120
- 189 Three L. Boilly coloured caricature prints, Le Pouvoir De L'eloquence, Les Grimaces, Les Faux Couplets, two dated 1824, 12" x 9" £60-90

- 190 Three 19th Century black and white sporting prints, London Sportsmen Recharging, Marking Game and Shooting Flying, 7" x 9" £50-80
- 191 A 19th Century coloured print, An Officer of the 15th Kings Hussars Taken from Life, 14" x 9" £60-90
- 192 Two 19th coloured political prints, The Parson at his Studies or a Skittle Ground the Wrong Road to Benefice, one other John Bulls box plus other both published by Tegg, one dated 1809, 11" x 15" and 9" x 12" £80-120
- 193 An 18th Century Bretherton black and white equestrian print, Symptoms of Running Away, 1782, 7" x 9" £30-50
- 194 A 19th Century J.L.Marks coloured print, Our National defence Drilling Volunteers, Plate 1, 7" x 12" £70-100
- 195 A 19th Century coloured caricature print of a man waiting for a stagecoach, titled Three Crows, Bad Luck, 9" x 7" £50-70
- 196 A 19th Century Gilray coloured print, Very Slippery Weather, 10" x 7" £70-100
- 197 A 1795 Gilray coloured print, The British Butcher, 11" x 8" £50-80
- 198 A 19th Century coloured print, Mr French, a Dighton coloured print, A Celebrated Public Orator 1808 and one other Dighton coloured print of a gentleman walking, 11" x 8", 14" x 10" and 11" x 6" £50-80
- 199 A Teniers black and white print, Jeu De Tric-Trac, 14" x 10" plus three other prints £20-40
- 200 Twelve 19th Century Bunbury coloured equestrian prints, 10" x 8" £250-350
- 201 Five 19th Century Bunbury coloured equestrian prints, 11" x 8" plus seven others unframed £150-250



- 202 Four 18th Century Bunbury equestrian Hints to Bad Horsemen prints, 8" x 10" £80-120
- 203 An 18th Century Bunbury black and white equestrian print, Dr Dauville in a Hurry, 1782, 9" x 10" £30-50
- 204 Two 18th Century Bretherton black and white political prints, Snip Anglois and Postglione Germanico, 1772/3, 9" x 6" £30-50

- 205 A 19th Century William Heath coloured print, The Highland Light Cart, Sketches by Travellers Plate 7, 1829, 10" x 14" £60-90
- 206 A 19th Century coloured print, A Trifling Misunderstanding or a Military Tea party, 10" x 14" £50-80
- 207 An 18th Century Bunbury black and white military print, A Visit to Camp, 1794, 11" x 13" £80-120
- 208 A 19th Century Bunbury coloured print, Tea Drinking, 12" x 17" £80-120
- 209 A 19th Century William Heath coloured print, Shot a Grouse, The Moors Plate 3, 10" x 14" £70-100
- 210 Two 19th Century coloured Dighton prints, A View from the Pump Room, Bath and A View from St Johns College, Cambridge, 1809, 11" x 8" £50-70
- 211 A 19th Century Dighton coloured military print, S.David Dundas K.B. Commander in Chief, 1810, 11" x 8" £70-100
- 212 A 19th Century Dighton coloured military print of two Napoleonic Officers, 1805, 11" x 8" £100-150
- 213 A 19th Century Dighton coloured print, Ireland in Scotland or a Trip from Oxford to the Land of Cakes, 1807, 11" x 8" £40-60
- 214 A 19th Century Dighton coloured print of a one legged man, 1803, 11" x 8" £30-50
- 215 A 19th Century Bretherton coloured print, Strephon and Chloe, 1801, 9" x 11" £20-40
- 216 A 17th Century Oak box with roundel carving, length 20" £100-150
- 217 A rectangular Gesso frame gilt wall mirror £30-50
- 218 A 19th Century Mahogany and inlaid two compartment tea caddy £40-60
- 219 A 19th Century Rosewood and Mother of Pearl inlaid drop dial clock, dial marked Kehle, Norwich £150-250



- 220 A 19th Century Mahogany and Brass inlaid drop dial clock, dial marked J No Mann, Norwich £100-150
- 221 A 19th Century inlaid Mahogany banjo barometer by Josmetti & Co, Worcester £80-120

- 222 A box of various 78 rpm records £20-40
 223 Various wine glasses etc including green stem hocks (three trays) £40-60
 224 Various 19th Century slice cut and other wine glasses £40-60
 225 A pair of cased Zenith 7x50 binoculars £20-30
 226 A Georgian inlaid Mahogany two compartment tea caddy with blending bowl £80-120
 227 Miscellaneous small items including cut steel scissors, nutmeg graters etc £20-40
 228 An Ivory part chess set, dominoes etc £30-40
 229 An antler handed magnifying glass, Brass hand paper clip and snuffers etc £30-50
 230 An 18th Century Scottish horn and brass snuff mull, initials R.C., 1755 £100-200
 231 An 18th Century deers hoof and white metal snuff mull £100-200



Lots 230 and 231

- 232 Four 19th Century treen and Brass seals £40-60
 233 Four 19th Century treen seals, one Cornelian £40-60
 234 A 19th Century Ivory marrow scoop plus a boxwood screw lid container £30-50
 235 Two 19th Century Brass seals plus two pipe tampers, one horses head and one boot £40-60
 236 Three 19th Century seals, one in the form of a claw clasping a blue stone ball £30-50
 237 A 19th Century Ivory calendar seal £50-70



- 238 An Art Nouveau Silver plated seal in the form of a standing lady with clasped arms £30-50
 239 A 19th Century white metal and lizard claw seal £50-80
 240 A 19th Century Mahogany lady's elbow chair with floral upholstery on turned legs £30-50

- 241 An 18th Century Oak dining chair with carved back and front stretcher £50-80
 242 A pair of 19th Century Oak carver chairs with leather upholstery £50-70
 243 A pair of Carolean Oak dining chairs with cane seats and backs £100-150



- 244 A Carolean Oak dining chair with cane seat and back and pineapple finials £60-80
 245 An 18th Century Oak carver chair with tooled leather back and seat with sunburst figure and floral decoration £100-150



- 246 An 18th Century Oak carver chair with twin splat back and hard seat on turned legs £70-100
 247 An 18th Century Oak chair with hard back and seat on turned legs £80-120
 248 A Carolean ebonised chair with cane seat and back, the legs with bulbous carving on ball feet £70-100
 249 An 18th Century Oak chair with cane seat and back on barley twist supports £50-70
 250 An 18th Century Oak chair with floral and leaf caved back and hard seat on turned legs £60-100
 250A An 18th Century Oak hard seat and back chair on turned legs £40-60
 250BA Victorian Mahogany tub chair with hard seat and turned legs £50-80
 250C An 18th Century Oak hard seat and back chair with floral and roundel carving on turned legs £60-100
 250D An 18th Century Oak carver chair with leather seat and back secured by pronounced Brass fasteners on square legs £100-150
 250E An 18th Century Oak carver chair with leather seat and tooled back on square legs £60-80

- | | | | | | |
|-----|---|---------|-----|--|----------|
| 251 | A large 19th Century Brass bound Mahogany writing box with fitted interior and secret drawers | £70-100 | 277 | A Silver plated four piece tea and coffee set | £20-40 |
| 252 | An iron flying pig plus a bronzed pig | £40-60 | 278 | A Poole Argosy tea set, Royal Doulton Almond soup bowls plus Paragon tea cups and saucers (two boxes) | £20-30 |
| 253 | A glass bell jar, height 16" | £40-60 | 279 | A Cowell Ipswich picnic case, Victorian Copper warming pan, Sphere and other magazines | £20-30 |
| 254 | Two Silver plated vine leaf plant pot holders plus other Silver plate | £30-50 | 280 | A Mahogany footstool, a woolwork firescreen plus various golf clubs | £30-50 |
| 255 | An Oak fusee mantel clock, movement marked A.M.Grimshaw | £50-80 | 281 | A pair of iron fire dogs plus Brass fire dogs and irons | £30-50 |
| 256 | An 18th Century Bronze skillet, the handle marked 'Wasbrough 3' on three legs | £80-100 | 282 | A selection of prints plus two acrylics on canvas | £20-40 |
| 257 | An Austrian 'Victoria' tea set with painted cattle and sheep decoration (thirty one pieces), the cups with gilded interiors | £50-70 | 283 | A print of two heavy horses, various prints and framed cigarette cards | £20-30 |
| 258 | Two pairs of glass vases including a Victorian painted pair | £40-60 | 284 | Oil on board, 'Moored Sailing Vessels', bears signature Dunlop, 10" x 13" | £100-200 |
| 259 | A Victorian Copper kettle and various Silver plate | £20-30 | 285 | T.Nicholls, oil on canvas, 'Vessel in Rough Seas', 19" x 23" | £20-40 |
| 260 | A boxed Hookah pipe | £20-30 | 286 | Two abstract watercolours and a Mark Godfrey limited edition print | £20-40 |
| 261 | A Boots Ideal Bed and Douche Slipper bedpan, registration date for 1919 | £20-30 | 287 | Geoffrey Chatten, oil on board, 'View of Southwold Promenade from the Pier', 13" x 20" | £80-120 |
| 262 | Three various cut glass decanters | £30-40 | 288 | Geoffrey Chatten, oil on board, 'Eastcliff Southwold', 10" x 11" | £70-100 |
| 263 | A Short & Mason Brass ships barometer (defective glass) | £20-30 | 289 | Peter Reave, oil on board of a floral study, 27" x 23" | £20-30 |
| 264 | A motorcar teapot, 19th Century plates plus other china | £20-40 | 290 | Duncan Cameron, oil on canvas of a Scottish loch scene, 19" x 29" | £100-200 |
| 265 | A Chinese crackleware vase plus other china | £30-40 | 291 | Kenneth.W.Burton, four watercolours, 'Counties of Britain' with certificates, 5" x 10" | £80-120 |
| 266 | Three pairs of Victorian and Edwardian Brass candlesticks | £20-40 | 292 | Kenneth.W.Burton, four limited edition prints from the Counties of Britain series, 4" x 5" | £20-30 |
| 267 | Various spectacles, cutlery and a Brass crib board etc | £20-40 | 293 | Oil on canvas of a beach scene with lighthouse, signed Thompson, 13" x 15" | £20-30 |
| 268 | A blue and white Delft scenes chamber pot plus a Silver three piece cruet | £20-40 | 294 | James Wright, three oils on board, "Holmes Wood Melton Constable", "Ploughing at Catley" and "Pasture Cawston" | £40-60 |
| 269 | Two pairs of binoculars, Regent 7x50 and Miranda 10x50 | £20-30 | 295 | A set of four coloured prints of London architectural views, published Alex Hogg, 18" x 11" | £70-100 |
| 270 | A Brass microscope, eastern box and a clock | £30-40 | 296 | Three rectangular wall mirrors plus three others | £20-40 |
| 271 | A ceramic plaque 'Boys Picnicking' plus other items including a Silver Whisky label | £30-50 | 297 | Various painting and prints | £20-40 |
| 272 | A Victorian Mahogany Brass bound writing slope | £50-70 | 298 | A picture of birds at nest and flight, 13" x 10" | £20-30 |
| 273 | Royal Doulton character jugs, Mad Hatter, Walrus and Carpenter plus other china and glass | £20-40 | 299 | A watercolour of a lady in Islamic frame plus other pictures | £30-40 |
| 274 | An Aynsley figure 'The Artful Dodger' plus Royal Doulton character jugs etc | £20-40 | | | |
| 275 | A large leather holder and a briefcase | £20-30 | | | |
| 276 | An Oak wall clock, oval mirror plus enamel bread bins | £30-40 | | | |

- 300 A print of a Thames pleasure boat plus four contemporary prints £20-40
- 301 A pair of Garman Morris watercolours of broadland scenes, 8" x 5" £30-50
- 302 Raymond Leech, oil on board of a lake house and woodland scene, signed lower right £150-250



- 303 C.Christofu, watercolour of an Arab scene, dated 1927 plus five other pictures £30-50
- 304 A.J.Cole oil on canvas, 'Sow and Pigs', signed lower right, 12" x 36" £200-300
- 305 A Bijou portable typewriter plus a Bush wooden cased radio £20-40
- 306 A box of various woodworking tools £20-40
- 307 Two rules, harmonica and other items £20-40
- 308 Two mauve carnival glass bowls plus Wade, Sylvac and other china £20-40
- 309 Various Royal Crown Derby Japan pattern china including fruit bowls, egg cups, lidded jars etc £200-300
- 310 A Victorian Mahogany glazed and mirror backed table top display cabinet with four shelves, height 27", width 11" and depth 8" £40-60
- 311 A German pottery figure of a lady holding doves (restored wing), height 39" £400-500




- 312 An Alabaster table lamp of urn form £20-40
- 313 A hanging oil lamp, storm lantern and a Brass porthole £20-40
- 314 A Brass oil lamp and a students lamp £30-50

- 315 A Carrara marble and alabaster bust "Giovane Sposa" (Young Bride), incised signature to rear, Prof G.Bessi, height 15" £500-700



- 316 A top hat, morning coat plus other formal clothing £30-50
- 317 A black synthetic fur coat plus a box of table linen £20-30
- 318 A lady's Azurine Mink coat, size 12 £30-50
- 319 An Eastern geometric wood rug, 84" x 54" £20-40
- 320 A Persian red ground carpet with stylised floral decoration and central medallion, 120" x 60" £100-150
- 321 A Chinese blue ground floral rug, 83" x 56" plus a small flatweave rug £40-60
- 322 An Afghan rug, 75" x 50" £20-40
- 323 An Indian woven floral rug, 71" x 47" £30-50
- 324 A Persian red ground rug with repeating central medallions, 72" x 42" £40-60
- 325 A Persian red ground geometric rug, 48" x 30" £30-50
- 326 Two Persian floral rugs £20-40
- 327 A Persian red ground geometric rug, 48" x 29" £30-50
- 328 A Persian style blue ground rug, 62" x 37" £40-60
- 329 A Persian rug with central repeating medallions, 44" x 29" £30-50
- 330 A Persian red ground floral carpet, 120" x 80" £40-60
- 331 A modern patterned wool rug £20-40
- 332 A Victorian blue floral tea set £20-30
- 333 A Heathcote china blue bird decorated tea set, a Grosvenor rose decorated coffee set and a Hancocks childs tea set £20-30
- 334 A pair of Victorian white Staffordshire dogs, height 13" £30-50
- 335 Three matching Victorian Staffordshire russet dogs plus one other (one cracked) £50-80

- 336 A Brass bound fire bucket with Royal Coat of Arms plus a set of chemical balance weights £40-60
- 337 Five West German pottery vases £20-40
- 338 An 18th Century Chinese blue and white plate (as found) plus other items £20-30
- 339 An Adams Chinese bird coffee pot, Sylvac animals plus other china and glass (two trays) £20-40
- 340 A porcelain rose decorated trinket set plus other china £20-40
- 341 A Mahogany Tambour front smokers cabinet containing Meerscham and other pipes, pewter teapot and other items £30-50
- 342 Various Daily Telegraph war maps etc £20-30
- 343 A Royal Doulton rose and gilt tea set £20-40
- 344 An Art Deco rouge marble and gilt metal striking mantel clock £50-80
- 
- 345 A continental porcelain figure decorated tea set, three graduated jugs and a Victorian milk glass ewer £20-40
- 346 A Japanese eggshell Dragon decorated tea set £20-30
- 347 C.Fox Smith, one volume, Here and There with the Painter Brangwyn, limited edition, No. 213/500, Lewis 1945 £20-40
- 348 A cased Sterling Super Selmer trumpet £30-50
- 349 A large early 19th Century Brass bound Mahogany campaign writing box with long side drawer and inset Brass handles, 20" wide (for restoration) £70-100
- 350 Various Aynsley, Wedgwood and other china etc £30-50
- 351 A Victorian Pine cutlery tray £20-30
- 352 A Brass Sestrel ships barometer, binoculars and other items £30-50
- 353 Five cut glass decanters and a vase £40-60
- 354 An Eastern white metal Brass seamed pot, a Victorian Brass doorstop and a Copper pot £40-60
- 355 A wooden hair pin case marked 'The Woodward Case' and a Victorian Oak Brass bound box £50-70
- 356 An Egyptian composition Pharaohs head, ethnic stone carvings etc £30-40
- 357 Various Minton Haddon Hall china £40-60
- 358 Various cut and other drinking glasses £30-50
- 359 Various items of cutlery, mirror etc £20-30
- 360 A Lladro figure of a Thai dancer (finger losses) plus other china and glass £30-40
- 361 Various snow scene ornaments plus other china and Brass (two boxes) £20-40
- 362 A Silver plated coffee pot plus other Silver plate £20-30
- 363 A French Brass striking mantel clock and a black marble clock £60-80
- 364 A Victorian Copper kettle £20-40
- 365 C.Christopher Davies, The Scenery of the Broads of Norfolk and Suffolk, two volumes, photo engravings and two etchings £30-50
- 366 A barge style paraffin stove plus two pieces of enamel ware £20-40
- 367 An Alabaster bowl, Brass bell and other items £20-40
- 368 A box and bag of linen plus brown draylon curtains £20-30
- 369 An Oak wall mirror and various sundries including Brass spirit levels £20-30
- 370 A Victorian floral tea set and other china £20-30
- 371 Various Brass owls, metal sculptures and a watercolour etc £20-40
- 372 Various Edwardian and other trios and tea wares £20-40
- 373 A Thomas white and gilt dinner and tea set (forty six pieces) £30-50
- 374 A Myott Willow pattern toilet set and jardinière etc £30-40
- 375 Various old woodworking tools £20-30
- 376 Miscellaneous items to include a test meter, a pottery monk decanter etc £20-30
- 377 A 19th Century twin handled pierced Brass footman on cabriole front legs £45-65
- 378 An antique iron swivel range bracket £30-50
- 379 A pair of lined curtains, pelmet and tie backs in Delft pottery bowls and flowers patterns, 202" (96" gathered) and 91" drop £30-50

- 380 An Anglo Indian table comprised of porcupine quills in Ebony frame with Ivory and exotic wood inlays £150-250



- 381 Various items of blue and white china including chamber pots, biscuit barrel etc £20-40
- 382 Various china and glass including inkwells £20-30
- 383 A suitcase of old telephones £20-30
- 384 Various items of china and glass £20-40
- 385 A chamber pot, binoculars plus other items £20-30
- 386 A pair of Victorian Brass candlesticks, jam pots and other items £20-40
- 387 A French opal glass bowl, Chinese and Japanese vases, a Willow pattern tureen and a jam pot £30-50
- 388 A box of Willow pattern china £20-40
- 389 A plate rack containing R.N.L.I. Spirit of Dunkirk plates plus one other 'Battle of Britain' Against all Odds £20-40
- 390 Boxed Coalport characters, Raymond Briggs, The Snowman a Sleigh Ride Home, No.4/500 £100-150
- 391 A box of various china and glass £20-30
- 392 Various items of Silver plate etc, two wooden masks plus scales and weights £20-40
- 393 Various Staffordshire style pottery dogs £20-40
- 394 Various volumes including Leighs New Picture of London, 1824/5 (disbound) £20-40
- 395 Various Silver plated trays, cutlery etc £20-40
- 396 A continental rose decorated fruit bowl plus other glass and china £20-30
- 397 A large Victorian Brass water can, 16 1/2" high £40-60
- 398 A 17th Century pierced and punch decorated warming pan lid converted to twin branch wall sconce £40-60
- 399 A heavy antique Copper coal scuttle with swing and fixed handles £40-60
- 400 A large 19th Century Corinthian column Brass table lamp, 17" tall £50-70

- 401 A Georgian two compartment tea caddy with exterior yellow floral and landscape chinoiserie decoration, the inside lid and compartment lids with chinoiserie figure decoration, Ivory ring handles and ball feet £300-500




- 402 A Georgian satinwood single compartment tea caddy with shell inlaid top and vase plus floral front and corner inlays £150-250



- 403 A Royal Crown Derby Teddy bear and dove paperweights £40-60
- 404 Beswick Beatrix Potter, Tom Kitten, Tommy Brock, Miss Tiggy Winkle, Peter Rabbit, Miss Moppet plus two small porcelain dolls £30-50
- 405 A pair of Royal Crown Derby lamb paperweights and a hare £30-50
- 406 An early 19th Century Japan pattern cup and saucer (cracked), crested tank plus three pieces of Goss china £20-40
- 407 A Royal Doulton flambe globular narrow neck vase, No.1618, height 10" £60-80
- 408 A sandstone figure of a Mediaeval man with staff holding a child, height 6" £20-40
- 409 A pair of Satsuma figure decorated vases, height 5" £20-40
- 410 A Royal Doulton figurine, Mary Had a Little Lamb HN 2048 £20-30
- 411 A Wedgwood powder blue octagonal fruit bowl with gilt dragon decoration, dia 8 1/2" £80-120
- 412 A Chamberlains Worcester blue ground floral bowl, dia 11" £100-200



- 413 A Sitzendorf floral encrusted vase and cover plus a Dresden inkstand (repaired) £50-70
- 414 A KPM figure of a yellow coated bird, height 8" £30-50
- 415 A Royal Crown Derby figure of thrush chicks, height 15" £20-30
- 416 A Bing & Grondahl figure of a puffin, No.1739, height 6 1/2" £30-50
- 417 A 19th Century German porcelain blue coated bird, height 9" £30-50
- 418 A Victorian oval Copper jelly mould of turret form by Benham & Froud No.15, 6 3/4" wide £120-150
- 419 A Victorian oval Copper jelly mould of fluted turret form and stamped '16', 6 3/4" wide £70-100
- 420 A Victorian circular Copper jelly mould of two tier turret form and stamped '310', 5 3/4" dia £70-100
- 421 A Victorian oval Copper jelly mould of turret form by Benham & Froud No.642 also stamped W.S.Adams & Son, Iron mongers to the Queen, 5 1/2" wide £120-150
- 
- 422 An Arts and Crafts Copper lidded tankard inscribed Ye Crown Inne, Olney and with a crown £50-70
- 423 A Victorian circular Copper jelly mould of turret form, stamped 51, 5 1/4" dia £70-100
- 424 A pair of bronzed figures of an Egyptian winged goddess on variegated marble bases £50-70
- 425 Two pairs of opera glasses and a purse shaped compact £20-30
- 426 A cold painted Bronze figure of a cockerel, height 5" £40-60
- 427 A bronze duck on gilt metal base, signed Puchegger, height 4 1/2" £40-60
- 428 A WMF peacock and a stuffed and mounted duckling £30-50
- 429 A Vaseline glass scent bottle, a ruby glass bottle with Silver tops and a porcelain figure decorated bottle £30-50
- 430 A Victorian papier mache snuff box, Limoges egg plus an enamel frog decorated box £20-30
- 431 A cloisonné vase and other small items £20-30
- 432 Two snuff bottles, one porcelain in Imari style and one Middle Eastern Brass plus a metal ovoid bottle £20-40
- 433 A Kashmiri box containing Schaeffer fountain pen, magnifying glass plus other items £30-50
- 434 A Brass combination clock, barometer, thermometer and compass £50-80
- 435 A 16th/17th Century Spanish globular Bronze mortar with a circle of protruding fins, 4 1/2" dia, 3 1/2" high £80-120
- 436 Various gents and ladies watches and sundries £20-40
- 437 A small Silver Capstan inkwell plus a paper knife with enamel ladybird mount £20-40
- 438 A Silver teething ring with a Mother of Pearl handle and a bone and Ivory teething ring (minus handle) £30-50
- 439 A 19th Century Ivory case with yellow metal banding and floral decoration with mirrored and velvet lined interior, length 2 1/2" £40-60
- 440 A Silver handled magnifying glass, white metal snuff box dated 1869 plus other items £30-40
- 441 An early pottery chicken, bears label bought in Athens 1894, height 3 1/2" (head repair) £30-50
- 442 Three Georgian Silver dessert spoons, a paper knife plus Silver plated cutlery £50-70
- 443 A Silver plated lidded oval box plus an embossed Silver trinket box £30-50
- 444 A Silver ewer with chased floral decoration, London 1868, makers mark O R £40-60
- 445 A small white metal cup containing Silver propelling pencil and other items £20-30
- 446 A Silver caddy spoon, George Unite Birmingham, 1843 £20-40
- 447 A Silver shell shaped caddy spoon, London 1787, Hester Bateman £50-70
- 448 A Georgian Silver filigree caddy spoon, marks indistinct £50-70
- 449 Two continental dessert spoons and two forks, marked VMS £80-100
- 450 A nest of drawers plus a box containing costume jewellery and a small amount of Silver jewellery £40-60
- 451 Various ladies and gents wristwatches and a cigarette case £20-30
- 452 Various gents wristwatches including Sekonda £20-40

- 453 A cased set of banded Agate studs £20-30
- 454 A Persian painted bone bracelet £30-50
- 455 A white metal paste set floral spray brooch, containing some Diamonds £30-50
- 456 A pair of converted cufflinks made up of 9ct Gold torpedo ends attached to 18ct Gold oval polished ends (as found condition) £100-150
- 457 A large gents signet ring with engraved crest (hallmarks rubbed), size S £150-250
- 458 A white metal Diamond set eternity ring, size N £150-250
- 459 An 18ct Gold Opal set ring, size P £70-90
- 460 A quantity of bar brooches and stick pins including two 9ct Gold, one with gilt metal mounted, two Silver hard stone mounted brooches and three stick pins including a yellow metal Coral set one £50-70
- 461 A pair of yellow metal earrings set with star cut Amethyst stones (possibly synthetic), one stone loose from mount £30-50
- 462 A mixed lot including yellow metal St Christopher pendant (as found), Arabic pendant stamped 585, two 9ct Gold bracelets (as found) and a 9ct Gold chain £120-160
- 463 A pair of unmarked white metal Sapphire and Diamond cluster earrings £150-250



- 464 A pair of large unmarked white metal Diamond cluster earrings set with central Pearl £250-350



- 465 A long Jade bead necklace £60-80
- 466 A 9ct Gold R.A.F. sweetheart brooch plus various costume jewellery £30-50
- 467 A jewellery cabinet plus a box of costume jewellery £30-40
- 468 Two Butterscotch Amber coloured pendants plus a pair of earrings £20-30
- 469 A carved Ivory necklace and a pair of flower earrings plus a brooch £30-50

- 470 A lady's stainless steel backed Longines wristwatch £40-60
- 471 A gents Omega Seamaster Quartz wristwatch £80-120
- 472 A boxed Moorcroft narrow neck vase in the Sea Holly pattern, designed by Emma Bosson, circa 2006, marked base, height 8" £100-150
- 473 A boxed Moorcroft squat vase in the Carnival Time pattern, designed by Sally Guy, circa 2006, marked vase, height 5 1/2" £120-180
- 474 A boxed Moorcroft narrow neck vase in the Gladioli pattern, designed by Kerry Goodwin, circa 2006, marked base, height 6 3/4" £100-150
- 475 A boxed Moorcroft long narrow neck vase in the Sea Drift pattern, designed by Rachel Bishop, circa 2002, marked base, height 8" £100-150



Lots 472, 473, 474 and 475

- 476 A Mahogany striking mantel clock, dial marked Knight & Gibbins, London £70-100
- 477 A pair of decorative 18th Century French seamed Brass candlesticks on wide circular bases, 10" high and a similar single seamed candlestick £60-80
- 478 A 19th Century terracotta copy of the Portland vase (base and rim chips), height 8" £20-40
- 479 An early 19th Century blue and white chinoiserie printed jug, crescent mark to base £30-50
- 480 A pair of late 18th Century Adam style Brass or bell metal candlesticks with beaded decoration, 9" high £30-50
- 481 A 19th Century Dutch hanging Brass candle box with raised back and embossed with gentleman Coat of Arms and country scene, 10 1/4" wide £40-60
- 482 A pair of Silver plated candlesticks £20-40
- 483 A 19th Century Charles Meigh stoneware Julius Caesar jug £30-40
- 484 A 19th Century Mahogany Brass bound tea caddy £20-40

- 485 A pair of continental porcelain figurines of fish and flower vendors plus other china £40-60
- 486 Various glass paperweights, crystal ornaments etc £20-40
- 487 A 19th Century Lignum vitae jar and cover, Brass crib board and a treen letter opener £40-60
- 488 A Japanese box with applied designed of domestic scenes £40-60
- 489 A Victorian Walnut and Brass bound dome top box £50-70
- 490 A Chinese carved soapstone vase with running deer and elephant handles, combination lidded ink pot plus a figure of Shou Lao £50-70
- 491 A basket of various jewellery and coins etc £20-30
- 492 A Hardy Palakona three piece fly rod, 246936 £30-50
- 493 A large 17th Century engraved and punched decorated Brass warming pan, stamped with makers initials and having shaped iron handle £80-100
- 494 A 17th Century Brass warming pan with pierced and punched decoration and Brass and iron handle £80-100
- 495 A large plaster recumbent elephant plus two others, composition £30-50
- 496 Evelyn Strickland, oil on board of a lake and woodland scene, 17" x 23" £20-40
- 497 David Balder, watercolour, 'Farmhouse', 11" x 14" £20-40
- 498 J.Gowing, watercolour 'Country Cottage' plus various pictures and prints including elephants £30-40
- 499 A lacquer and Mother of Pearl panel of fish, a ceramic parrot picture plus a cork picture £20-30
- 500 Royal Worcester Queens 80th birthday and Royal Doulton Princess Diana figurines plus three Nao figurines £30-50
- 501 Various tea wares and other china £20-30
- 502 Four composition Meerkat figurines £20-30
- 503 A tub of various costume jewellery £20-30
- 504 Various Sylvac and other china £20-30
- 505 Various Poole Springtime dinner and tea wares £20-40
- 506 Two boxes of various glassware £20-30
- 507 A Doulton Burslem white tea set, Stuart crystal and other china etc £20-30
- 508 Two boxes of Poole twin tone and a seagull china £20-40
- 509 Two boxes of Royal Worcester and other china £20-40
- 510 Various thimbles (including one Silver and mustard spoon) plus Aynsley and other china and glass £20-40
- 511 Various crested ware, lighters and other items £20-30
- 512 A watercolour of Southwold by Ronald Rutherford, 8" x 10" £50-70
- 513 A pair of Royal Crown Derby donkey paperweights £40-60
- 514 A Japanese watercolour and postage stamp picture, Man and Boy in landscape, 11" x 11" £30-50
- 515 WITHDRAWN
- 516 A 19th Century Japanese Gourd vase, signed Aoki Mokubei, height 7" £80-100
- 517 A box of 19th Century family and other Bibles £20-40
- 518 John Constable Reeve, watercolour, Parrot's titled Rosella Platycerus, 11" x 8" £20-40
- 519 S.J.Plumb, watercolour of a broadland scene with wherries, 11" x 14" £20-30
- 520 A coloured Munnings print, Brown Jack, 20" x 22" £30-50
- 521 A box of various costume jewellery etc £20-30
- 522 A Silver plate on Copper two handled wine cooler £40-60
- 523 A pair of pierced Brass wall pockets £20-30
- 524 Four Victorian Willow pattern meat plates £20-30
- 525 A Persian rug with stylised floral design, 57" x 48" £30-50
- 526 A pair of ships lamps, marked Improved Combination Launch Lamp and brackets £30-50
- 527 A 19th Century German terracotta tobacco jar in the form of a Chinaman with pigtails £20-40
- 528 A pair of Art Deco prints of ladies with cherub and Pan Piper titled 'Springs Love Song' and 'The Fortune Teller', 10" x 17" £20-30
- 529 A 9ct Gold Garnet and CZ cluster ring, size E £30-50
- 530 A modern Silver rocking horse pin cushion £20-30

- 531 A 9ct Gold Garnet and split Pearl ring, size M £40-50



- 532 A 9ct Gold Garnet and half Pearl ring, size L £30-40

- 533 A 9ct Gold five Opal ring, size M and a Gold single Garnet ring, size K £40-60

- 534 An unmarked Gold three Sapphire crossover ring, size L £30-50

- 535 A 9ct Gold Diamond and Sapphire ring, size J £30-40

- 536 A 9ct Gold and Onyx signet ring, size T £45-55

- 537 A 9ct Gold Accurist lady's watch on bracelet £100-120



- 538 An unmarked Gold Moonstone bracelet £150-180



- 539 No Lot

- 540 A 9ct Gold Amethyst and Diamond ring, size O £40-50

- 541 Two boxes of various clocks £50-70

- 542 A cased Skylark Brand Chinese violin with two bows £20-40

- 543 A cased Czechoslovakian violin with single bow £40-60

- 544 A cased German Mittenwald violin circa 1860-1880 with lion head scroll £400-600



- 545 A 19th Century print of Sark plus other pictures and a mirror £20-40

- 546 A coloured print, The East India Ship Duke of Buccleuth, Capt Alex Henning, 14" x 20" £20-40

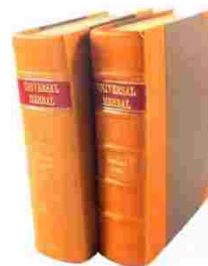
- 547 A pair of French coloured prints, The Gleaners, 14" x 16" £20-30

- 548 An Oak mantel clock, a string puppet plus a Royal Albert Mr Benjamin Bunny £20-40

- 549 A Brass cased repeater alarm carriage clock £100-200



- 550 Thomas Green, two volumes, The Universal Herbal Dictionary, contains photo copies of eighteen plates including the decorative title page to one volume, one volume contains part of volume two and volume two duplicates part of the text in volume one, rebound in 3/4 calf with new end papers £150-250



- 551 A Masonic apron plus china and glass etc £20-30

- 552 A boxed Waterford crystal fruit bowl with spiral cut design, dia 12" £50-70

- 553 Three Nao figurines and a duck group £30-50

- 554 Royal Doulton figurine, Bride HN 2873 and Bridesmaid HN 2874 £20-40

- 555 A boxed Royal Doulton figurine, Olivia HN 5114 £20-40

- 556 A picture of a young ballerina, 14" x 19" £20-30

- 557 An Azuni opal coloured glass and gilt metal heart pendant on chain, Kit Heath Silver droplet pendant on chain and a Equinox white metal choker, clasp stamped STG 925 £30-40

- 558 An 18ct Gold double rose ring, size N £50-70

- 559 A 9ct Gold Opal set ring and a 9ct Gold Ruby and Diamond half eternity ring £50-70

- 560 A 9ct Gold Sapphire and Diamond ring plus two others, one Silver £30-50

- 561 A Silver and Amber bracelet (as found), a Silver ring plus various yellow metal charms £30-50

FURNITURE AND COURTYARD

Lots 1001 – 1212

ALL MEASUREMENTS ARE APPROXIMATE

**Lots 1001 -1067 – A LARGE COLLECTION
OF FURNITURE FROM A LOCAL
COLLECTORS ESTATE**

- 1001 A Georgian Mahogany fall front secretaire fitted with cupboard, pigeon holes and nine drawers over two short and two long drawers below on bracket feet £250-350



- 1002 A Georgian Oak chest of two short and three long drawers £150-200
- 1003 An 18th Century Oak rustic half moon stool £40-60
- 1004 A Georgian Oak bench seat with shaped four panel back, on turned legs with maroon button back cushion £200-300
- 1005 An Edwardian Mahogany pot cupboard and circular Mahogany occasional table £30-50
- 1006 A Victorian Pine box, cash tin and magazine rack £20-30
- 1007 A 19th Century coopered lidded flour bin £40-60
- 1008 A 19th Century Mahogany armchair on turned legs and brass castors £50-70
- 1009 A Georgian Pine dresser base with three drawers and three cupboard below £200-300
- 1010 A 19th Century shelved dresser back £50-80
- 1011 A 19th Century Oak two door display cabinet £50-80
- 1012 A modern Pine three shelf open bookcase £20-40
- 1013 A Victorian Mahogany glazed front three shelf display cabinet £50-80
- 1014 An 18th Century rustic Pine rectangular gate leg table £50-80
- 1015 A pair of 19th Century Elm seat stick back elbow chairs and a pair of slat back dining chairs £80-120

- 1016 A 19th Century Pine kitchen table on square tapered legs with two drawers £150-250
- 1017 An 18th Century Oak coffer with carved top and front £100-200
- 1018 A set of four Victorian Mahogany dining chairs with arched back decoration and leather backed seats on turned fluted legs £70-100
- 1019 A 19th Century rectangular Elm top table on turned legs and drawer £80-120
- 1020 An Edwardian inlaid and crossbanded Mahogany drop leaf table on square tapered legs £60-80
- 1021 A Victorian Mahogany fitted trumpet workbox on quadruple supports £120-180
- 1022 A Georgian Oak chest of two short and three graduated long drawers on bracket feet £100-200
- 1023 A modern Pine five shelf open bookcase £50-80
- 1024 A modern Pine five shelf open bookcase £50-80
- 1025 A Victorian Mahogany bow fronted chest of two short over three long drawers, on turned feet £100-150
- 1026 A 19th Century Elm seat comb back elbow chairs £80-120
- 1027 An Edwardian Mahogany glazed front single door display cabinet £80-120
- 1028 A 17th/18th Century Oak Wainscot chair with lozenge and wheel back on turned legs £200-400



- 1029 An 18th Century Jacobean style Oak chest of two short over two long drawers with geometric mouldings on bracket feet £200-300



- 1030 A Victorian Mahogany two door glazed front bookcase £100-150
- 1031 A Victorian Walnut and Mahogany circular occasional table with spiral column and tripod supports £70-120
- 1032 An 18th Century Elm seat comb back elbow chair on turned legs £80-120
- 1033 A Victorian Mahogany two drawer table with central mask carving on barley twist supports £100-200
- 1034 A 19th Century Mahogany circular occasional table with brass bowl on removable insert, the top with cherub, floral and dragon carving applied brass decoration on bobbin turned supports £70-100
- 1035 A Pine shelf dresser £70-100
- 1036 A Georgian oval gate leg table on turned legs £100-150
- 1037 A 17th Century Oak plank chest £150-200
- 1038 A 19th Century table top cabinet £40-60
- 1039 A carved Mahogany standard lamp £20-40
- 1040 A Victorian Mahogany four drawer chest on cabriole legs £80-120
- 1041 A Victorian Mahogany armchair with red button back upholstered on carved legs £60-80
- 1042 A Georgian Pine four door, floor standing corner cupboard £100-200
- 1043 A Victorian Mahogany armchair with scroll arms red button back upholstered on turned legs £60-80
- 1044 A Georgian Oak fall front secretaire with fitted pigeon holes, twelve drawers over two door cupboard with applied geometric mouldings £200-250
- 1045 An 18th Century Oak coffer with carved front £100-150
- 1046 A Georgian Pine dresser base £100-150
- 1047 A 19th Century Pine dresser shelf back £50-80
- 1048 An 18th Century oval Oak gate leg table on turned legs £80-120
- 1049 A 19th Century Mahogany two drawer toilet mirror £50-70
- 1050 A Georgian Mahogany four drawer chest with cantered corners on bracket feet £100-200
- 1051 A Victorian Mahogany cupboard bookcase with two glazed doors and two doors below £150-200
- 1052 A Victorian Mahogany pronounced spoon back armchair with light green button back upholstery on turned legs £100-150
- 1053 A Victorian Mahogany cupboard bookcase with two glazed doors over two doors below £120-180
- 1054 A 19th Century Pine glazed front cabinet with dentil cornice £60-80
- 1055 A Georgian Pine flour hutch with false front drawer on square tapered legs £60-80
- 1056 A 19th Century Oak table with carved back and shelves on turned supports £100-200



- 1057 An 18th/19th Century rectangular Oak occasional table £80-120
- 1058 A Georgian fruitwood top rectangular table with single drawer on heavy turned legs £100-150
- 1059 A Victorian carved Mahogany armchair with floral upholstery on turned legs £100-150
- 1060 A 19th Century Windsor slat back armchair £60-80
- 1061 A 19th Century Windsor slat back armchair £40-60
- 1062 A Victorian Oak tub chair with maroon button back upholstery, carved with lion mask and figures, on leaf and lion mask carved legs £120-180
- 1063 An Edwardian inlaid and cross banded Mahogany single pedestal five drawer desk £80-120
- 1064 A 19th Century strong box with key £50-70
- 1065 A pair of 1930's rocking armchairs £30-50
- 1066 An Edwardian Mahogany wingback armchair with dark red upholstery on square legs £50-80
- 1067 A Carolean style cane seat and back chair and a pair of carvers on cabriole legs £60-80

| | | | | | |
|------|---|----------|------|--|----------|
| 1068 | A pair of weathered concrete garden urns | £40-60 | 1093 | A modern stained Pine oval pedestal table on quadricle supports | £20-40 |
| 1069 | A large weathered concrete planter and a statue of a boy etc | £30-50 | 1094 | A Georgian Mahogany and crossbanded bureau with four graduated drawers on bracket feet | £80-120 |
| 1070 | A set of four woven seat garden chairs | £30-40 | 1095 | A 1950's carved Oak court cupboard with lead glazed doors and open Oak bookcase | £70-100 |
| 1071 | Four folding chairs and a clothes drier | £20-40 | 1096 | A Mahogany cupboard with glazed fall front over two drawers and full front below | £60-100 |
| 1072 | A cast iron twin door stove with flue | £50-70 | 1097 | A modern Pine two door wardrobe | £50-80 |
| 1073 | A garden parasol on a stand and a tall metal plant stand | £20-40 | 1098 | A Victorian painted Pine drop leaf table | £20-40 |
| 1074 | A cast iron planter and five assorted plant pots and a decorative bicycle garden ornament | £30-50 | 1099 | A modern Pine six shelf open bookcase | £40-60 |
| 1075 | Two very large terracotta pots with mosaic decoration around the rim and a terracotta clock/thermometer | £40-60 | 1100 | A 19th Century Pine single door wardrobe | £100-150 |
| 1076 | A cast iron fire grate | £20-40 | 1101 | A modern white painted two door wardrobe | £20-40 |
| 1077 | A cast iron Popula black painted mangle | £30-50 | 1102 | A stained Pine single door display cabinet with plate glass shelves | £50-70 |
| 1078 | A cast iron Ewbank green painted mangle | £30-50 | 1103 | An Edwardian Oak sideboard with mirror back and floral carved doors | £70-100 |
| 1079 | A vintage single furrow hand drill and a set of G&B Morvan Ltd scales | £20-30 | 1104 | A Victorian Rosewood shaped front chiffoniere (as found) and a rectangular Mahogany two drawer table | £40-60 |
| 1080 | A pair of Teak garden armchairs and two folding chairs | £30-40 | 1105 | A modern Pine bureau, a lidded box/stool and a drum style occasional table | £40-60 |
| 1081 | A Brass dome back double bed frame with decorative pierced inserts | £100-200 | 1106 | A pair of modern mink upholstered armchairs | £30-50 |
| 1082 | A nearly new Next two seater mink upholstered sofa | £80-120 | 1107 | A modern floral upholstered three seat sofa | £70-100 |
| 1083 | A nearly new Next three seater mink upholstered sofa | £120-160 | 1108 | A Victorian octagonal table on turned legs and cross stretchers | £20-40 |
| 1084 | A 19th Century Oak gate leg table, one other gate leg table and a Stag bedside table | £30-40 | 1109 | A set of folding shelves, an Oak trunk and three dining chairs | £20-40 |
| 1085 | A 19th Century Mahogany two door compactium wardrobe | £60-80 | 1110 | A Victorian green draylon upholstered day bed | £40-60 |
| 1086 | A pair of white painted and gilded carved armchairs on cabriole legs | £80-120 | 1111 | An Oak fire surround and curb | £40-60 |
| 1087 | A Mahogany sideboard with mirror back | £120-180 | 1112 | A modern red upholstered two seater sofa | £30-50 |
| 1088 | A light Oak mirror back dresser with shelf and lead glazed doors | £40-60 | 1113 | An Oak gateleg table | £20-30 |
| 1089 | A tall modern Pine two door wardrobe | £50-70 | 1114 | A vintage spinning wheel and small three legged circular stool | £40-60 |
| 1090 | A modern light Oak open shelved cupboard with single door and cupboard below | £50-70 | 1115 | WITHDRAWN | |
| 1091 | A modern stickback elbow chair, a cane seat chair and a string seat stool | £20-40 | 1116 | A varnished Oak two door cupboard with carved doors on stand | £50-80 |
| 1092 | A Victorian Mahogany chiffonier | £50-70 | 1117 | A modern Pine sideboard with two glazed doors | £30-50 |

- 1118 A wooden drinks dispenser, a wine rack, an open bookcase and a cake stand £30-50
- 1119 A Stag dressing table and a bedside chest £30-50
- 1120 A Mahogany half moon hall table, a cheval mirror, two chairs, a circular stand and a brass jam pan £30-50
- 1121 An Oak lead glazed two door bookcase £50-70
- 1122 An Oak two door wardrobe £30-50
- 1123 A modern narrow Pine six drawer chest £30-50
- 1124 A Victorian Mahogany split chest of two short and three long drawers on plinth base £80-120
- 1125 A 19th Century flame Mahogany chest on chest two short and three long drawers over three long drawer base £200-400
- 1126 A carved Bergere three seater settee on turned legs with terracotta upholstery £150-250
- 1127 A brown leather button back Chesterfield settee £150-250
- 1128 An Oak two door cupboard £50-70
- 1129 A Mahogany corner cabinet and a Victorian inlaid Mahogany glazed front cupboard £30-50
- 1130 An ebonised overmantel mirror £20-30
- 1131 A light Oak barley twist gate leg table £20-40
- 1132 An Indian carved hardwood folding table bed tray and a small folding table £20-40
- 1133 A Victorian Rosewood trumpet fitted workbox £70-100
- 1134 An 18th Century Wm. Sellers, Long Acre, London. Walnut veneered and seaweed marquetry month going longcase clock. The moulded pediment with blind fret ornament enclosed by a waist panel door with a glazed oval aperture inlaid with arabesques, foliate scrolls interspersed with birds, butterflies and figures. The plinth with similar decoration on raised bun feet. The 12" square brass dial with crown and putti spandrels, seconds subsidiary and calendar aperture, the twin train five pillar movement of month duration with bolt and shuttle maintaining power, anchor escapement and outside countwheel strike. Approximately 7' high £3000-5000



Lot 1134

- 1135 An Edwardian mirror back gentleman's dressing stand with five drawers and cupboard below £60-100
- 1136 An Oak box based cheval mirror £30-40
- 1137 A nest of four Chinese hardwood occasional tables £80-120
- 1138 A 19th Century Oak thirty hour long case clock with painted arch top moving ship mechanism marked Shortman, Newnham £250-350
- 1139 Two Edwardian shaped top occasional tables £40-60
- 1140 A brass and iron double bed frame with spring base £40-60
- 1141 A light Oak dressing chest £30-50
- 1142 A Victorian circular painted tin flour bin £60-80
- 1143 A modern Pine glazed top cupboard with three drawers and cupboard £80-120
- 1144 A Victorian Pine blanket box £30-50
- 1145 An Edwardian Oak two drawer side table on turned legs £30-50
- 1146 A Victorian Pine blanket box £40-60
- 1147 An unusual French style painted child's extending single bed £30-50
- 1148 A Japanese floral and leaf carved chair and a French Kingswood and inlaid shaped top table on ebonised base £30-40
- 1149 A Pine open six shelf bookcase £50-80
- 1150 A Victorian Pine two door wardrobe £70-100
- 1151 A painted dapple grey rocking horse £200-300
- 1152 Three picnic hampers £20-30
- 1153 An Edwardian two door inlaid Mahogany astral glazed display cabinet £80-120
- 1154 A Pine TV cabinet in the form of a two door cupboard £20-30
- 1155 A modern brown upholstered reclining armchair £20-40
- 1156 A rectangular white painted gesso wall mirror £50-80

| | | | | | |
|------|---|----------|------|---|---------|
| 1157 | A rectangular white painted gesso wall mirror with oval aperture | £50-80 | 1183 | An Edwardian octagonal Mahogany occasional table | £30-40 |
| 1158 | A maroon mobility scooter with keys and charging unit | £100-150 | 1184 | An Edwardian carved Mahogany armchair with green draylon button back upholstery | £40-60 |
| 1159 | Two white Lloyd Loom chairs | £20-40 | 1185 | Two Victorian Mahogany swing toilet mirrors, a stand, a nest of tables and six bottle rack | £30-50 |
| 1160 | A 1970's Teak sideboard by McKintosh & Co. Ltd | £50-70 | 1186 | An Edwardian Oak marble top and tiled back corner washstand | £60-80 |
| 1161 | A Georgian Mahogany chest on chest, upper section with dentil cornice, blind fret carving, with three short and three long drawers over a three drawer base, on bracket feet, the front and side with profuse fern and floral carving | £400-600 | 1187 | Five various vintage suitcases | £20-40 |
| 1162 | A modern Pine dresser | £40-60 | 1188 | A modern Meredew Mahogany finish four piece bedroom suite | £50-80 |
| 1163 | A Mahogany sideboard on cabriole legs | £20-40 | 1189 | A Gothic Victorian Oak wall mounted ecclesiastical shelf | £30-50 |
| 1164 | A modern light Oak single wardrobe | £40-60 | 1190 | A Victorian inlaid corner whatnot and one other | £30-50 |
| 1165 | A Mahogany brass bound two drawer campaign style table on trestle supports | £80-120 | 1191 | A 19th Century drop leaf dining table on turned legs | £40-60 |
| 1166 | Five occasional tripod tables | £30-50 | 1192 | An Oak music cabinet | £20-40 |
| 1167 | Two Mahogany elbow chairs, a stool and three tables | £30-50 | 1193 | A Georgian Mahogany single drawer side table | £40-60 |
| 1168 | A Pine three door bedside chest and one other with single drawer | £30-50 | 1194 | A 19th Century Oak joint stool | £50-70 |
| 1169 | A modern two door Oak cupboard | £30-50 | 1195 | A light Oak nine drawer pedestal desk | £80-120 |
| 1170 | A Victorian Pine flour hutch | £40-60 | 1196 | A Japanese carved plant stand and inlaid Mahogany occasional table | £40-60 |
| 1171 | A Victorian Mahogany glazed two door bookcase | £80-120 | 1197 | A 1950's carved Oak court cupboard | £50-70 |
| 1172 | An Edwardian inlaid Mahogany child's chair and an inlaid Mahogany wine table | £30-50 | 1198 | Two tin trunks and a vintage suitcase | £20-40 |
| 1173 | A white painted pedestal dressing table | £30-40 | 1199 | A 1950's Oak arch back dresser | £30-50 |
| 1174 | A white painted chest of two short and three long drawers | £30-50 | 1200 | A scroll arm window seat with gold silk upholstery on cabriole legs | £30-50 |
| 1175 | A white painted chest of two short and three long drawers | £30-50 | 1201 | A Victorian painted Pine two door cupboard | £40-60 |
| 1176 | An oval Oak gate leg table and four tan leather upholstered dining chairs | £50-80 | 1202 | A reproduction four drawer bow front bedside chest | £30-50 |
| 1177 | A Mahogany astral glazed corner cabinet | £20-40 | 1203 | A modern Mahogany extending shaped top dining table and six chairs including two carvers | £60-80 |
| 1178 | A nest of three Yew effect occasional tables and a TV cabinet | £20-40 | 1204 | A carved Oak joint stool | £40-60 |
| 1179 | A set of Edwardian Mahogany dining chairs with pale pink draylon upholstery | £30-50 | 1205 | Four various dining chairs | £30-50 |
| 1180 | A Victorian Mahogany extending table with two leaves on turned legs | £80-120 | 1206 | An Oak extending dining table with two extra leaves and a set of four green leather upholstered dining chairs | £80-120 |
| 1181 | A Victorian painted Pine blanket box | £40-60 | 1207 | A rectangular part painted two drawer side table | £40-60 |
| 1182 | An Oak refectory table with acorn bulbous supports | £50-80 | 1208 | An Aw Lyn Oak arch back dresser | £80-120 |
| | | | 1209 | A carved Oak joint stool | £40-60 |
| | | | 1210 | Two wheel back chairs | £30-50 |
| | | | 1211 | A Singer electric sewing machine | £20-40 |
| | | | 1212 | A Mahogany Spencer upright piano | £20-40 |

COMMISSION BID SLIP

To be executed at this Friday's Sale: Date: _____

Name: _____

Tel: No: _____ Mobile: _____

Buyer's No: _____

PLEASE NOTE THAT WE WILL BE UNABLE TO ACCEPT ANY BIDS WITHOUT A BUYER'S REGISTRATION NUMBER.

| Lot No. | Description | Maximum Bid |
|---------|-------------|-------------|
| | | |
| | | |
| | | |
| | | |
| | | |
| | | |
| | | |
| | | |
| | | |
| | | |
| | | |
| | | |
| | | |
| | | |
| | | |
| | | |
| | | |
| | | |
| | | |
| | | |
| | | |
| | | |

NB: All purchases, in both salerooms, subject to 17% BUYER'S PREMIUM PLUS VAT
Credit Card transactions will attract a premium of 2%

**AFTER 5 WORKING DAYS, STORAGE CHARGES OF £2 + VAT PER LOT / PER DAY
WILL APPLY TO ANY FURNITURE THAT HAS NOT BEEN COLLECTED**

GENERAL CONDITIONS OF SALE

- 1 THE BUYER** - The highest bidder acknowledged as such by the auctioneer will be the buyer. If any dispute arises, the auctioneer shall have absolute discretion to settle the matter. The auctioneer shall rule the bidding and no bid shall be retracted. The auctioneer reserves the right to refuse any bid. The bidder in the room who is successful in purchasing any lot or lots is entirely responsible for paying for such lot or lots in accordance with our general conditions of sale. Purchases made on behalf of a third party are entirely the responsibility of the bidder in the room. The auctioneer reserves the right to bid on behalf of the vendors for any lot and to withdraw, consolidate or divide any lot or lots.
- 2 REGISTRATION** - To assist the progress of sale, all prospective buyers must register their name and address at reception and collect a bidding number before the sale commences. Should there be any doubts as to price or buyer, please draw the auctioneer's attention to it immediately.
- 3 BUYER'S PREMIUM** - A buyer's premium of 17% plus VAT at the standard rate of the hammer price is payable on each lot.
- 4 VENDOR'S COMMISSION** - Our standard Vendor's commission of 14% plus VAT will be charged up to £1000 - rate negotiable prior to sale. In addition, each lot will be subject to a lotting fee of £3 plus VAT.
- 5 PURCHASE VIA LIVE BIDDING** - Any lots purchased via the saleroom.com live auction service will be subject to an additional 3% commission charge plus VAT at the current rate imposed on the hammer price. In completing the bidder registration on www.the-saleroom.com and providing your credit card details and unless alternative arrangements are made with Durrants you hereby agree to the following terms:
 - a) Durrants are authorised to charge the credit/debit card given in part or full payment including all fees for items successfully purchased in the auction via the sale-room.com, and
 - b) You are authorised to provide these credit/debit card details to Durrants through www.the-saleroom.com and agree that Durrants are entitled to ship the goods to the cardholder name and address provided in fulfilment of the sale.
- 6 VALUE ADDED TAX** - Lots on which Value Added Tax may be payable by the buyer on the "hammer price" are indicated in the catalogue by a symbol beside the lot number. The buyer shall pay any VAT which may be due on any amounts owed by the buyer under these conditions of sale at the rates prevailing on the day of the auction.
- 7 AUCTIONEERS MARGIN SCHEME** - The Auctioneers Margin Scheme allows auctioneers to sell items without VAT on the hammer price. Under the margin scheme an amount equivalent to VAT at the current rate is added to the buyer's premium. This amount cannot be refunded. The VAT element will not be shown separately on the buyer's invoice.
- 8 PAYMENTS**

Purchaser - Our methods of payment are with bank transfer, cash, debit or credit card (in person only) or by cheque supported by a valid guarantee card or bankers reference. All purchases must be paid in full on the day of the sale before any lot is removed from the premises. No goods will be released to buyers unknown to the auctioneers without adequate reference or before their cheques have cleared. Anyone who, for whatever reason, is unable to pay for their goods on the day of the sale must inform the Saleroom Manager as to when payment will be made. There is a 2% surcharge on credit card payments.

Vendor - Vendors will normally receive proceeds of sale 10 working days after. However, where individual consigned Lots have sold for £500 or above Durrants reserve the right to hold payment until we have been paid by the purchaser. We also reserve the right to rescind a sale, if it is clear that having pursued all the usual channels Durrants are unlikely to receive payment on the Lot in question. In such circumstances, the Lot(s) involved will be reoffered in a later Sale with the sale reserve (if applicable).
- 9 ATTRIBUTION AND CONDITION OF LOTS** - Every effort is made to ensure the accuracy of any statement as to authorship, attribution, origin, date, age, provenance and condition of any lot whether or not such statement forms part of the description of any such lot. Whether any such statement is made orally or in the catalogue it is an expression of opinion. Each buyer by making a bid for a lot acknowledges that he has satisfied himself fully as to the attribution and condition of the lot. If any damage is done to any lot at the viewing or before, during or after the sale, such damage shall be made good by the person committing such damage, principals being responsible for the acts of their servants, such damage to be assessed by the auctioneers. Written condition reports are available for all Lots upon request. Buyers that do not request condition reports forfeit their right to a refund, except where we are in breach of Contract.

Verbal condition reports will not be given. The latest that a condition report will be e-mailed, posted or faxed is the day immediately before the sale.
- 10 ATTRIBUTION OF PICTURES** - (Condition 7 also refers).
 - (a) The forename(s) (or asterisks where not known) and surname of the artist indicates in our opinion a work by the artist
 - (b) The initials of the forename(s) and the surname of the artist indicates in our opinion a work of the period of the artist which may be wholly or in part his work.
 - (c) The surname of the artist indicates in our opinion a work of the school or by one of the followers of the artist or in his style and of uncertain date.
 - (d) Bears signature indicates in our opinion that this is not the signature of the artist.
 - (e) All other terms are self-explanatory.
- 11 OWNERSHIP OF PURCHASES** - The ownership of the lot(s) purchased will not pass to the buyer until the buyer has paid the auctioneers in full the total amount due and the auctioneers have applied such payment to the lot.
- 12 TRANSFER OF RISK** - Each lot shall be at the purchaser's sole risk from the fall of the hammer and shall be sold with all faults and imperfections. The purchaser is deemed to have inspected the lots and satisfied himself as to their condition. The liability to insure any purchased Lot shall pass from the auctioneer to the purchaser on the fall of the hammer.
- 13 COMMISSION BIDS** - If instructed, the auctioneers will execute bids and advise prospective purchasers. This service is free. Lots will always be purchased as cheaply as is allowed by such other bids and reserves as are on the auctioneer's books. In the event of identical bids, the earliest will take precedence. There must always be a maximum limit indicated, i.e. the amount to which you would bid if you were attending the auction yourself. "Buy" or unlimited bids will not be accepted. Commission bids placed by telephone are accepted at the client's risk. We do accept commission bids by facsimile. We urge our clients to place such commission bids within one hour of the close of the view day.
- 14 TELEPHONE BIDS** - Requests for telephone bidding must be registered with the Saleroom Manager within one hour of the close of the view day. It may not be possible to accept requests on sale days. Written confirmation of such bids from persons unknown to the auctioneers must be received before the commencement of the sale. Whilst every effort will be made to execute telephone bidding, the auctioneers cannot be held responsible for any default or neglect in connection with this service. All such arrangements therefore are made entirely at the prospective buyer's risk.
- 15 COLLECTION OF GOODS** - At the purchaser's sole cost and expense, the purchaser shall collect the lot(s) purchased not later than 12 mid-day after the day of the auction, not before payment to the auctioneers of the total amount due. After 5 working days, storage charges of £2 + VAT per day per lot will apply to any goods that have not been collected.
- 16 POSTAGE / SHIPPING** - Goods will not be released to couriers unless they are delivering to the address that the buyer has used for registration. Couriers are instructed not to take alternate delivery instructions once dispatched
- 17 COMPLIANCE** - Upon failure of any purchaser to comply with any of the above conditions any money deposited by the purchaser in part payments shall be forfeited to the owner of the lot, he paying there from, all just expenses. Any lot not paid for within 1 month of the purchase date shall be resold by public auction or private contract and the deficiency (if any) arising from such a resale together with all expenses attending the same shall be made good by the defaulter at this sale who shall have no claim to any surplus which may arise on a resale.
- 18 PRE SALE ESTIMATES** - Given by the auctioneers or a member of their staff are their opinion as to what they consider any particular lot is likely to realise. However any lot may sell at a figure less than the lower estimate and for more than the higher estimated figure. The auctioneers and their staff reserve the right to alter their pre-sale estimates, either upwards or downwards, on any lot at any time, up until such time as the lot is offered for sale.
- 19 RESERVES** - The auctioneers and vendors reserve the right:
 - (a) To remove the reserve completely from a previously reserved lot at any time up until it is offered for sale.
 - (b) To place a reserve on a previously unreserved lot at any time up until it is offered for sale.
 - (c) To alter a reserve, either upwards or downwards, on any lot at any time up until it is offered for sale.
 - (d) Should any item fail to sell at the reserve price on the day of the Auction they will be subject to commission of 3% of the Reserve Price, subject to a minimum fee of £5 plus VAT.
- 20 THIRD PARTY LIABILITY** - Every person on the auctioneers' premises before, during or after a sale or at any other time, shall be deemed to be there at their own risk and shall have no claim against the auctioneer in respect of any injury they may sustain or any accident which may occur.
- 21 ANY NOTICES** - Any notices that may be displayed from time to time by the auctioneers in the sale ground or salerooms shall be deemed to form part of and be included within the general conditions of sale.
- 22 MONEY LAUNDERING REGULATIONS** - In order to comply with current anti-money laundering legislation we are unable to accept cash payments over £8,000. Any purchaser wishing to pay cash for any purchase over £1,000 may be asked for identification e.g. Passport or photo driving licence.
- 23 DROIT DE SUITE ROYALTY CHARGES** - in essence this charge will be made to the purchaser of any work of art that has been produced by a living artist or for a period of up to 70yrs after the artist's death, on lots with a hammer price more than the UK sterling equivalent of €1,000. Please refer to www.dacs.org.uk for further rules and current exchange rates. The royalty charge will be added to purchase invoices and must be paid before items can be cleared. All Royalty charges are paid to the Design and Artists Copyright Society (DACS) by the Auctioneers and no handling costs or additional fees with respect to these charges will be retained by the Auctioneer.
- 24 RICS REGULATION**
 - a) All Clients monies are paid into our Auction Clients Account with Barclays Bank PLC Norfolk Business and Agricultural Corporate Banking Centre, Norwich, Norfolk (any interest accrued monies held will be retained by Durrants)
 - b) Durrants operates an RICS approved complaints policy, details can be found on our website www.durrants.com
- 25 RESCISSION** - Notwithstanding any other terms of these Conditions, if within fourteen days of the date of sale Durrants receive from the buyer of any lot notice in writing that in his view the lot is a deliberate forgery and the lot is returned to them in this period in the same condition as at the time of sale and produces written evidence, the burden of proof to be upon the buyer, satisfies Durrants that considered in the light of the entry in the catalogue the lot is a deliberate forgery then the sale of the lot will be rescinded. The purchase price will be refunded once the sum has been returned to Durrants by the Seller.

If before the proceeds of the sale have been paid to the Seller Durrants receives notice from the buyer that, in the buyers view the sale should be rescinded and Durrants agrees with that view, Durrants will rescind the sale and refund to the Buyer any amount paid to Durrants in respect of the Lot, and if such notice is received after payment of the proceeds of this sale the Seller will on notice reimburse Durrants to the full amount of the sum refunded to the Buyer.
- 26 REPRODUCTIONS** - Owing to the large number of Third Reich and other uniforms and accoutrements being used for films, television and plays, it becomes increasingly difficult to ascertain the authenticity of certain pieces. We catalogue all items as seen, and offer no guarantee as to their authenticity. The terms 'bronze', 'silver' and 'gold' refer to the grades in which medals, badges, etc., were awarded and not to their composition. Items described as (PATTERN) are an example of the described item with no guarantee of age or authenticity

BUYER REGISTRATION FORM

Please enter the information required below before taking it to a member of staff. Please ensure that you have a suitable form of identification to verify the information you are giving, e.g. driving licence, utility bill etc. Once you have done this you will be issued with a card and this will have your buyer's number on it

| | | | | | |
|----------------------------|-------|--------------|-------|----------------|-------|
| Mr / Mrs / Miss / Other: | _____ | Initials: | _____ | Surname: | _____ |
| Company | _____ | | | | |
| Address | _____ | | | | |
| | _____ | | | | |
| | _____ | | | | |
| | _____ | | | | |
| Tel: | _____ | | | | |
| Mobile: | _____ | | | | |
| E-mail: | _____ | | | | |
| Credit / Debit Card No: | _____ | | | | |
| Start Date: | _____ | Expiry Date: | _____ | Security Code: | _____ |

Where a buyer is registering for the first time and leaving a commission bid the auctioneers reserve the right to undertake a credit card transaction using the details which have been supplied if the purchase is successful.

For Office Use Only
Buyers Registration Number: -

DURRANTS AUCTION ROOMS

The Old School House, Peddars Lane, Beccles, Suffolk, NR34 9UE

Tel: 01502 713490 Fax: 01502 711039

Email: auctionrooms@durrants.com

Web: www.durrants.com



DIRECTIONS

FROM A12/A145 (SOUTH)

On entering Beccles, at the first set of traffic lights turn right into Peddars Lane. The Auction Rooms are 200 metres along the road on your right.

FROM A143/A146 (BURY ST EDMUNDS & NORWICH)

Approaching Beccles, at the McDonald's roundabout, go straight over, then take the first right via Gillingham over the bridge into Beccles. Follow the road past the new Tesco, go straight at the first set of traffic lights, right at the second and the Auction Rooms are 100 metres on your left.

FROM A146 (LOWESTOFT)

At the Worlingham roundabout bear left through Worlingham. At the first set of lights go straight over, at the second turn left and the Auction Rooms are 100 metres on your left.

WWW.DURRANTS.COM

BECCLES
01502 712122

10 New Market
Beccles
Suffolk
NR34 9HA

DISS
01379 642233

Pump Hill House
2b Market Hill
Diss, Norfolk
IP22 4WH

HARLESTON
01379 852217

32-34 Thoroughfare
Harleston
Norfolk
IP20 9AU

SOUTHWOLD
01502 723292

98 High Street
Southwold
Suffolk
IP18 6DP

HALESWORTH
01986 872553

12 Thoroughfare
Halesworth
Suffolk
IP19 8AH

AUCTION ROOMS
01502 713490

The Old School House
Peddars Lane
Beccles, Suffolk
NR34 9UE

MAYFAIR
0870 112 7099

Cashel House
15 Thayer Street
London
W1U 3JT