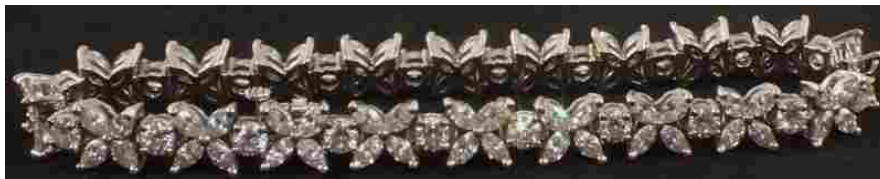


DURRANTS

SINCE 1853

RESIDENTIAL
AGRICULTURAL
COMMERCIAL
ON SITE AUCTIONS
PROPERTY MANAGEMENT
BUILDING CONSULTANCY
AUCTION ROOMS
HOLIDAY COTTAGES



Friday 29th July 2016

Antiques and Fine Art commencing 10.00am
Furniture plus Courtyard commencing at 1.00pm



ANTIQUES AND FINE ART WITH JEWELLERY,
SILVER AND FURNITURE

Tel: 01502 713490 Fax: 01502 711039

WWW.DURRANTS.COM

Catalogues

£3.00

RICS ACCREDITED VALUERS AND AUCTIONEERS

NOTES FOR PROSPECTIVE PURCHASERS

DURRANTS AUCTIONEERS AND VALUERS

Durrants' experience of Auction Sales dates back to 1853 and since that time we have continued to undertake chattel sales and valuations throughout Norfolk and Suffolk.

From our Auction Rooms at Peddars Lane, Beccles we conduct Fine Art and Antique Auction Sales every month, interspersed with Specialist Sales.

Our team of Valuers and Auctioneers undertake valuations for probate and insurance purposes and provide advice for sale and family division.

RICS accredited Valuers and Auctioneers

OUR SERVICE

With our own salerooms, experienced staff and removal vehicles we are able to offer a comprehensive and cost effective service to executors, solicitors and private clients.

- On site inspections at short notice by appointment
- Experienced valuers throughout the group
- Verbal advice or comprehensive reports
- Professional and confidential service
- Specialist valuations of furniture, ceramics, pictures, silver, jewellery, clocks and watches, books, toys and dolls, stamps, postcards, coins, Militaria, swords, medals Sporting Guns and Antique Firearms

Durrants has offices in Beccles, Halesworth, Southwold, Harleston and Diss. Each has a team of experienced Chartered Surveyors and Estate Agents, offering a wide range of services encompassing Agricultural, Residential, Commercial and Investment properties. We also have a specialist Planning and Design Group.

FIREARMS

We have full R.F.D. capabilities enabling us to sell on your behalf all items that require licences. Our registered Firearms Dealership Number is Suffolk 252. We are always happy to help with any firearm queries, legal requirements or valuations.

VIEWING

The Viewing days for the Friday 29th July Antiques and Fine Art with Jewellery and Silver are:-

Tuesday 26th July between **9am and 5pm**

Wednesday 27th July between **9am and 5pm**

Thursday 28th July between **9am and 7.30pm**

The morning of the sale from 8am

SALE DAY TIMETABLE

The antiques sale starts at 10.00am in the upstairs saleroom at Lot 1.

There will be no lunch break during the course of the day.

Clearing is allowed during the sale in the upstairs saleroom.

The furniture sale starts at 1pm at Lot 1001 in the ground floor saleroom.

SUMMARY OF CATALOGUE

China, Glass, Clocks, Pictures, Wood, Metal,
Pottery and Porcelain, Objects Vertue, Silver,
Jewellery and Watches

Furniture and Courtyard

Missing Lot numbers 66, 132, 411 and 448

Lots 1 – 550A

Lots 1001 - 1192

For further images please visit www.durrants.com or www.the-saleroom.com/durrants

FORTHCOMING EVENTS

**FREE VALUATIONS AND TAKING IN OF GOODS MONDAY TO FRIDAY
BETWEEN 9AM - 5PM (EXCEPT SALE DAY) AND ALSO EVERY
SATURDAY MORNING BETWEEN 9AM - 12 NOON**

AUCTION CALENDAR 2016

Friday 29th July - Antiques and Fine Art with Jewellery and Silver

Saturday 6th August – A Private Collection of Antiquarian and Modern Books

Friday 19th August - Antiques and Fine Art with Jewellery and Silver

Thursday 1st and Friday 2nd September - A two day sale of Toys, Collectables, Militaria, Medals, Sporting Guns and Firearms

Friday 16th September - Antiques and Fine Art with Jewellery and Silver

Friday 7th October - Antiques and Fine Art with Jewellery and Silver

Friday 28th October - Antiques and Fine Art with Jewellery and Silver

Friday 11th November - Antiques and Fine Art with Jewellery and Silver

Thursday 24th and Friday 25th November – A two day sale of Toys, Collectables, Militaria, Medals, Sporting Guns and Firearms

Friday 9th December - Antiques and Fine Art with Jewellery and Silver

These dates may be subject to change – please contact us during the year to ensure you don't miss out!

VIEWING

Antique and Fine Art Sales are on view the week of the sale - Tuesday and Wednesday 9am-5pm and Thursday 9am-7.30pm, or by appointment.

Toy, Collectable and Militaria Sales are on view the week of the sale - Tuesday 9am-5pm, Wednesday 9am-7.30pm and Thursday 8am-10am and 3pm-7.30pm

(no viewing when the auction is in progress on the Thursday), or by appointment.

Saturday Auctions

Viewing will be held the day prior to the auctions between 9am-7.30pm and the morning of the sales from 8am-10am

All Auction catalogues, photographs, particulars and results are available online at www.durrants.com

We are also happy to carry out additional and one off sales on site or at our Sale Rooms by arrangement. House clearances by arrangement.

For further information please call:

Mark Whistler ANAVA Auction Rooms Manager,
Specialist Militaria, Firearms and Furniture Valuer
01502 713490 or mark.whistler@durrants.com

Beverley Baker Assistant Manager and
Head of Administration
01502 713490 or auctionrooms@durrants.com

Robert Pearse Valuer for Stamps, Postcards,
Collectables, Ceramics, Books and Watches
01502 713490 or auctionrooms@durrants.com

James Felgate MNAVA Valuer and Photographer
01502 713490 or auctionrooms@durrants.com

Anna Paulding Auction Administrator /
House Clearance Coordinator
01502 713490 or auctionrooms@durrants.com

Melissa Porter Auction Administrator
and Photographer
01502 713490 or auctionrooms@durrants.com

ONLINE BIDDING

We have teamed up with the-saleroom.com to allow you to bid at our auctions. Simply register on www.the-saleroom.com/durrants under Live Auctions.

Bid online at our auctions through
the-saleroom.com

**CHINA, GLASS, CLOCKS, PICTURES,
WOOD, METAL, POTTERY, PORCELAIN,
OBJECTS VERTUE, SILVER, JEWELLERY
AND WATCHES**

Lots 1 – 550A

- 1 A pair of 19th Century Staffordshire figures, Cobbler and Wife £30-50
- 2 A cased Royal Crown Derby Japan pattern coffee set £100-150
- 3 A Royal Crown Derby Japan pattern tea set £70-100
- 4 A Cloisonné and hardstone tree, Onyx ware and other items £30-50
- 5 A Silver plated spirit kettle plus other Silver plate £30-50
- 6 Various cranberry glass bowls etc £20-40
- 7 Various items of Brassware including a planter and a chamberstick etc £20-40
- 8 Tuscan Orleans and chinoiserie tea sets plus a Limoges style coffee set (two trays) £40-60
- 9 A pair of Cloisonné vases, a jar plus other Oriental items £40-60
- 10 A carved wooden sleeping cat £20-30



- 11 A Doulton Lambeth stoneware floral jardinière £30-40
- 12 A Poole black ground vase with red and orange roundels £20-40
- 13 A 19th Century German pewter bowl, initials and date, 1845 £40-60
- 14 A signed Bronze of a boy with dog and hoop £100-150
- 15 A pair of 19th Century Japanese Brass vases with three colour metal inlays and phoenix decoration (lacking handles), dragon height 12" £100-150
- 16 A German Schatz Brass four glass clock £30-50
- 17 A Brass four glass mantel clock with painted enamel dial and mercury pendulum £80-120
- 18 Two teapots, Lingard green motor car and Chintz £20-40
- 19 Various African and other carvings etc £20-40
- 20 Thirteen Royal Crown Derby, Derby Border dinner plates £40-60

- 21 An Art Deco style Bronze dancing lady, signed Nirval £70-100
- 22 A gents walking cane with decorative metal grip £20-40
- 23 A black slate striking mantel clock £30-50
- 24 A 19th Century Mahogany Mother of Pearl and bone inlaid jewellery box £50-80
- 25 A Russel & Bromley alligator skin handbag £20-40
- 26 Two New Guinea pottery bowls, one with bird head decoration £30-50
- 27 A Japanese blue and white floral bowl (rim chip) £20-30
- 28 A Chinese composition Buddha £20-30
- 29 A steel three piece tea set £20-30
- 30 A display of five South East Asian lacquered and giltwood Buddhas on perspex stand £100-150
- 31 A cased German violin c1910, bears Impress Paganini mark to rear £100-150
- 32 Royal Doulton glassware, an Ostrich handbag and three framed items £40-60
- 33 Twelve framed and glazed African prints of various subjects £30-50
- 34 Various items of Brass and metalware £20-40
- 35 A quantity of various sea shells £20-30
- 36 Losol ware and other china £20-40
- 37 Various inlaid Indian sandalwood boxes £40-60
- 38 Various items of Brass and metalware including iron Royal International Horse Show plaque plus various china £40-60
- 39 A large collection of Lilliput Lane Cottages, boxed and unboxed £50-80
- 39A A Meakins Willow pattern dinner and tea set plus other china and glass (two boxes) £20-40
- 40 W.Bond, oil on board of a sailing boat plus other pictures £20-40
- 41 Four coloured Havell shooting prints, 8" x 12" £40-60
- 42 A watercolour of a horse jumper, 4" x 7" £20-30
- 43 Framed Wills cigarette cards, Naval dress and badges plus various tea cards in albums £20-30
- 44 A framed Manchester Unity and Oddfellows print, 19" x 24" £20-30
- 45 An oil on board of ships of Great Yarmouth by Ricky Botweighth, 17" x 23" £20-40
- 46 Anthony Egan, acrylic on board of a surreal landscape, 21" x 25" £20-40

- 47 Philip Broomhead, 1976, oil on canvas of a river scene, 18" x 23" £20-30
- 48 A pencil drawing of an unclad recumbent large lady, 14" x 21" £100-120
- 49 J.D.Hosea, oil on canvas, Storms Over Hurst Castle, Isle of Wight plus other pictures £30-50
- 50 Two coppered panels, one of a stage coach scene and a Musketeer in a tavern scene, 28" x 19" £20-40
- 51 Raymond Watson, acrylic, Pheasant, 10" x 7" £40-60
- 52 Raymond Watson, acrylic, A Wren Roost, 16" x 11" £50-70
- 53 Signed limited edition print of a reclining lady with flowers, 1981, 17" x 25" £20-30
- 54 Four russet and one green Staffordshire dogs £20-40
- 55 Five white glazed Staffordshire dogs £30-50
- 56 An Ansonia mantel clock in a carved Pine case £30-50
- 57 WITHDRAWN
- 58 A Piquot ware tea set £35-45
- 59 A Bronze plaque of an archer, 23" x 15" £100-150
- 60 Royal Doulton Larchmont and other china £20-40
- 61 Various figures and figurines plus china £20-40
- 62 A pair of Brass hall lanterns (no glass) £30-40
- 63 An oil lamp with red glass bowl and pink etched shade £30-40
- 64 A Brass column oil lamp with blue glass bowl £40-60
- 65 A 19th Century French gilt metal clock garniture, the clock with cherub and face decoration, figure painted porcelain panel, painted dial and urn finial, the side pieces with house and figure painting, height 20", maker Japy-Freres £200-300
- 66 No Lot
- 67 A large Vaseline glass trumpet vase, height 41" £100-120
- 68 A Chinese pottery table lamp £20-40
- 69 A glazed pottery aeroplane table lamp £20-40
- 70 A table lamp in Art Deco style with inverted lady column £40-60
- 71 An Art Deco style chrome lamp with iridescent green glass shade £30-50
- 72 An Art Deco style chrome anglepoise lamp £40-60
- 73 A taxidermy display of two Teal Drakes with a female in a winter naturalistic setting cased, 15" x 20 1/2" (front glass as found) £70-90
- 74 A Victorian taxidermy Bittern cased, 23" x 24" £120-140
- 75 A Victorian taxidermy Bittern cased within a naturalistic setting, 32" x 23" £100-150



Lots 74 and 75

- 76 A taxidermy Goldeneye Duck on a wooden plinth £30-50
- 77 A taxidermy Tufted Drake Duck on base £30-50
- 78 A taxidermy Common Teal Drake on wooden plinth £30-50
- 79 A taxidermy Red-crested Pochard Drake on wooden plinth £30-50
- 80 A Shiraz red ground rug £50-80
- 81 A lady's beaver lamb fur coat £20-40
- 82 A lady's brown mink coat £20-40
- 83 A composition lady figurine in Art Deco style £20-30
- 84 A dome clock, Silver plated cruet plus Brass and metalware (two trays) £30-40
- 85 A pair of Royal Doulton stoneware vases, red wine glasses etc £20-40
- 86 Two Brass front Salter scales £20-40
- 87 A treen bowl, barometer, Cloisonne and other bird ornaments £20-40
- 88 A Booths dragon decorated coffee set, six Chinese floral enamel bowls and a cut glass claret jug £20-40
- 89 Three West African colonial era tribal carvings, mask, bird and figure £40-60
- 90 A 19th Century Coalport floral part tea set and an unassociated jug £40-60
- 91 A Persian Copper lidded vessel, Indian vase and an Islamic white metal box £30-50
- 92 A pair of Indonesian white metal clothing appliques and a carved giltwood figure £30-50
- 93 Various items of Silver plate £20-30
- 94 A Chinese porcelain wrist warmer, vase and three plates £20-40
- 95 A Silver topped walking cane £20-30

- 96 A Victorian pink opal glass vase, Gladstone plate and a Japanese tea set £20-40
- 97 A continental porcelain seven piece floral comport set £40-60
- 98 Six 19th Century Brass or gun metal measures, viz a straight sided quart and five of graduated bellied form from pint to 1/4 gill £60-80
- 99 A heavy rectangular engraved Silver plated tray, by Maple & Co with pierced gallery, scrolled handles and four bun feet, 22 1/4" wide £40-60
- 100 Various crested and Royal commemorative china and a Mr Pickwick teapot (two trays) £30-50
- 101 Royal Albert Old Country Roses and other china £30-40
- 102 A cut glass Silver rim bowl and decanters plus glasses etc (two trays) £20-40
- 103 An African carved wooden vessel, the elongated feet in the shape of heads £30-50
- 104 A Mahogany cased Brass Swift microscope £50-80
- 105 A Delft window planter and a lidded vase £20-40
- 106 Three canteens of various cutlery £40-60
- 107 A Chinese porcelain fish tank and vase £30-40
- 108 Two trays of various china and glass £30-40
- 109 Various continental porcelain figurines plus a figure of St Francis and a Royal Doulton "Thanks Doc!" HN 2731 £30-50
- 110 Three various tea sets (two trays) £20-40
- 111 An Oak three drawer cutlery canteen £20-40
- 112 19th Century and other pewter tankards and metalware (two trays) £20-40
- 113 A Silver plated three piece tea set, boxed cutlery and Silver plate £30-50
- 114 A Doulton Lambeth 1897 Jubilee stone jug and a 19th Century salt glazed relief decorated teapot £30-50
- 115 M.V.D.Tougin, a pair of oleographs on panel of cottage interiors with figures, 9" x 14" £30-50
- 116 Various unframed watercolours and drawings £20-40
- 117 A Georgian Mahogany table top £20-30
- 118 Various LP's and singles, 1960's onwards £20-40
- 119 A Cauldon floral toilet jug, flagons plus pictures £20-40
- 120 Various items of Brass and Silver plate £20-40
- 121 Various tea wares and other china £20-40
- 122 An oval gilt mirror and a wire bird cage £20-40
- 123 A table top display cabinet and various boxes etc £30-40
- 124 Chinese rice bowls plus other china and glass £20-30
- 125 Four prints plus various books £20-40
- 126 A golfing print and one other plus scales and weights £20-30
- 127 A 19th Century salt glazed gin barrel with Royal Coat of Arms £30-40
- 128 An Art Deco style chrome square column standard lamp £40-60
- 129 Copeland Spode Byron plus other china and glass £20-40
- 130 Various glassware and Royal memorabilia £20-30
- 131 A cased Weltmeister button accordion, Chromatic £450-600
- 132 No Lot
- 133 An inlaid Mahogany oval mirror and one other £20-30
- 134 Javanese Batik and woolwork pictures plus three mirrors £20-40
- 135 A grey top hat in box plus a folding top hat £40-60
- 136 An Edwardian fern and floral tea set £20-30
- 137 Various Grimwades floral chintz and other china (two trays) £20-40
- 138 Clarice Cliff floral tureen and plates £20-40
- 139 A gilt framed river scene print and other pictures including a Lady Godiva print £20-30
- 140 Various tureens, chamber pot and plates etc £20-40
- 141 Various teawares and other china (three boxes) £30-50
- 142 Newhall Hanley blue floral pottery tea and dinner ware £20-30
- 143 A case of four lawn bowls and shoes £20-30
- 144 A Kents patent knife cleaner £30-50



- 145 An Art Deco Walnut octagonal coffee table £20-40
- 146 A Georgian style Mahogany and Parcel gilt wall mirror with Ho Ho bird crest £50-80
- 147 A 19th Century Mahogany stick barometer by W & S Jones, Holborn, London £150-200
- 148 A machine made Persian style floral carpet, 98" x 78" £40-60
- 149 A Persian blue ground floral runner, 121" x 43" £60-90
- 150 A Persian red ground rug with geometric designs, 73" x 51" £40-60
- 151 An Afghan red ground rug with repeating central design, 76" x 47" £20-30
- 152 A Persian cream and red rug with central medallion £40-60
- 153 A floral carpet, 86" x 65" £20-30
- 154 A Chinese blue ground rug, 74" x 50" £20-30
- 155 A Pakistan brown ground wool rug, 70" x 48" and one other, 38" x 26" £20-30
- 156 A Persian floral rug, 65" x 39" £20-30
- 157 Various walking sticks, pictures and a mirror £20-40
- 158 Various topographical, antiquarian and other volumes (two boxes) £30-50
- 159 A set of three Brass fire irons, cameras and a boxed Royal Doulton decanter £20-40
- 160 A carved Oak stool, two iron doorstops plus other items £30-40
- 161 Two canteens plus various Silver plated cutlery £20-40
- 162 A reproduction Mahogany saw clock £40-60
- 163 A French Boulle striking mantel clock in waisted case £250-350
- 164 An Art Deco rouge and black marble clock flanked by two spelter dogs £100-150
- 165 A pair of wrought iron wall lamps with iridescent green glass globes £40-60
- 166 A Japanese iron painted fan with central gilded mask £20-40
- 167 A leather bound Holy Bible 'Job to Revelation', a leather bound Holy Bible 'Genesis to Ester' plus a bound Common Prayer, 1820 £20-30
- 168 Six various Chinese carved hardwood figures £60-80
- 169 A modern Chinese fish tank £20-30
- 170 Two New Guinea tribal carvings plus one Easter Island figure £80-120
- 171 A Brass oil lamp plus two miniature Brass and Copper kettles £20-40
- 172 A large treen sailors fid and a plumb bob £30-50
- 173 A West African tribal axe with pierced blade and figure carving £60-80
- 174 A Brass Lucas King of the Road car lamp £80-120
- 175 Various Spode Delphi plates and bowls £20-30
- 176 A plaster bust of Mozart, a pair of Brass wall lights and a wooden box £20-40
- 177 A carved Mahogany wall bracket and two African masks £30-40
- 178 An old stick telephone, Brass firemans nozzle plus other metalware £20-40
- 179 A Fender Frontman 15G amplifier £30-50
- 180 A cased binocular microscope and an Oak barometer £30-50
- 181 A cased European cello and bow in a red hardened outer case with soft red velvet interior, case marked Hiscox Liteflite £800-1200
- 182 Various items of Silver plate and cutlery £50-80
- 183 An oil lamp, floral metal candelabra, various metalware plus a collar box containing coins £20-40
- 184 A 19th Century inlaid Mahogany shield shaped toilet mirror £40-60
- 185 A pair of Chinese polychrome bulbous vases with animal mask handles, mounted warriors and emblems, height 15" £230-260



- 186 Brass galleon coat hooks plus a Brass and Copper pot £30-50
- 187 A Royal Doulton jug in Art Deco style, a 19th Century Chinese tree plate, a cut glass decanter plus wine glasses etc (two trays) £30-40
- 188 A green and milk glass floral painted overlaid table lamp, lidded pot and a pair of ashtrays £20-30
- 189 A Georgian Mahogany pie crust table top, a Brass tray plus two Art Deco mantel clocks £20-40

- 190 Royal Worcester Polyanthus and Boch plates, a German blue and white cup plus a German pink ground coffee set £20-40
- 191 Various glass and china including 19th Century stone china plates, Paragon coffee set etc (two trays) £20-40
- 192 A Tuscan china floral tea set with similar pottery teapot £20-40
- 193 A Chinese circular lidded bowl with floral, fruit and other decoration, dia 11" £50-70



- 194 A Royal Doulton stoneware blue ground and Slaters rose bowl plus a Victorian stoneware relief moulded jug £20-30
- 195 A Brass ships gymbal compass by T.Chamberlain, London £20-30
- 196 An 18th Century Chinese blue and white tea bowl, saucer dish and a pair of Satsuma vases (as found) £20-30
- 197 A Victorian Silver plated tea set plus other Silver plate £20-40
- 198 Various meat plates, tureens, china and glass (two boxes) £30-50
- 199 Various fishing rods, basket, reels and fly boxes etc £30-50
- 200 Three West African tribal Jetkri paddles £30-50
- 201 A Victorian box and contents £20-40
- 202 A carved wooden box containing costume jewellery £20-30
- 203 A Silver pocket watch and various jewellery £40-60
- 204 A case of various costume jewellery £20-30
- 205 Various Silver and white metal jewellery £20-30
- 206 A box of various costume jewellery £20-40
- 207 Various items of costume jewellery £40-60
- 208 A jewellery box containing Silver and costume jewellery £35-45
- 209 A box of costume jewellery £20-30
- 210 An unframed pen and ink drawing, Home Rule for Ireland, 7" x 5" £50-80
- 211 A painting of porcelain of horse and dogs (as found), 8" x 6" £180-200
- 212 Jacques Villon (1875-1963), four pencil drawings of male and female figures, 9" x 5" £20-40


- 213 A pair of 19th Century Delft vases and covers, VK monogram, height 10" £70-100
- 214 A pair of 19th Century Willow pattern tea caddies £30-40
- 215 An 18th Century Worcester floral blue and white plate £70-100
- 216 A French Boulle mantel clock in waisted case, enamel dial, blue numerals and sunburst pendulum £150-250
- 217 A Chinese soapstone seated scholar £20-40
- 218 A Lalique frosted glass beaker with lady decoration, engraved mark R.Lalique, France £40-60
- 219 A bronzed figure of a boy next to a barrel, after Bergen £40-60
- 220 A Bellman, Ivy and Carter gilt metal and rouge marble clock with cherub mount £200-300



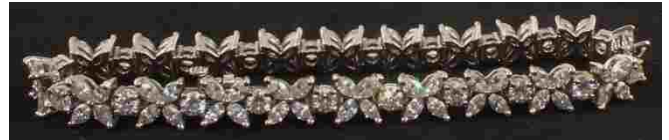
- 221 A Coalport blue and white floral jug (cracked handle) £30-50
- 222 An unusual tin barbers bowl £50-70
- 223 A small collection of badges, watches and brooches etc £20-30
- 224 A selection of Silver and white metal jewellery including an Amber set ring, a Turquoise set brooch and bracelets etc £40-60
- 225 A ball watch and others plus costume jewellery etc (two boxes) £30-50
- 226 A boxed Longines gents wristwatch, 18ct Gold chronograph No. 30 C2 7414 4351 128952'H with box and paperwork £750-950



- 227 A paste necklace and clip on earrings £20-40
- 228 Gold and Silver set paste drop earrings £40-60

- 229 A lady's Rolex Perpetual Oyster Datejust wristwatch with case and receipt (as found) £300-500
- 230 An 18ct Gold five stone Opal set ring, size P £80-120
- 231 Two 9ct Gold bracelets (one as found) with a scarf clip stamped 585 £80-100
- 232 An 18ct White Gold solitaire Diamond ring (approx 0.50cts), size R (internal crack) £150-250
- 233 A square cut Ruby set ring stamped 750, size L £45-65
- 234 A selection of Gold and yellow metal jewellery to include a 9ct Gold Seed Pearl and Garnet brooch, a 9ct Gold signet ring, a 9ct Gold back and front locket on chain and a yellow metal bar brooch (as found) £40-60
- 235 Various Silver and white metal jewellery etc plus a watch marked Radley £30-50
- 236 A collection of various wristwatches including 10KT GOLD FILLED, white metal watch chain and yellow metal glasses frames (as found) £40-60
- 237 A 9ct Gold bar brooch, a pair of adapted 9ct Gold cufflinks, two 9ct Gold band rings, teeth with Gold caps, a 9ct Gold stick pin and two yellow metal stick pins etc £120-160
- 238 Silver stone set rings and earrings £60-80
- 239 Two 9ct Gold Sapphire and white stone set pendants, one on chain with a 9ct Gold bracelet (as found) £25-35
- 240 An 18ct White Gold thirty one Diamond cluster ring, size N £200-250
- 
- 241 A 9ct Gold gents Diamond solitaire ring, size R £80-100
- 242 An 18ct Gold Turquoise and Diamond half hoop ring, size N £160-200
- 243 An 18ct Gold three row Diamond ring, 1/2ct, marks rubbed, size L £130-150
- 244 A 9ct Gold Topaz and Diamond cluster ring, size L £30-50
- 245 A 9ct Gold Diamond cluster ring, 0.15ct, size J £40-60
- 246 Three pairs of 9ct Gold earrings £45-65
- 247 An 1899 Gold sovereign £160-180
- 248 A pair of oval shaped Aquamarine and Diamond set earrings £600-700

- 249 A carved Jade bar brooch (depicting flowers) with jet circular ends mounted on white metal (damage to one end) £250-350
- 250 A large carved Jade pendant £400-500
- 251 A hallmarked Tiffany and Co Platinum and Diamond set line bracelet, the Diamonds set in the form of flowers interspaced with brilliant cut Diamonds, est total Diamond weight 2cts £1200-1500



- 252 A gilt brooch by Rene Magritte modelled as a rose and a sword against a background of leaves, signed Magritte to reverse and stamped 1997 ADAGP £150-250
- 253 A five stone Sapphire and Diamond set ring, size N £1200-1500
- 254 A pair of Gold and white metal (possibly Platinum) clip earrings in the form of stylised bows set with Diamonds with a Pearl drop £600-700
- 255 A pair of large Gold flower shaped clip earrings set with Rubies and a small Diamond set as the centre £400-600



- 256 A Gold circular brooch set with Diamonds in flower shape, vacant hair, photo panel to reverse, est total Diamond weight 1ct £500-600
- 257 A five stone Diamond ring, size P (wear to shank) £700-800
- 258 An Art Deco style carved Jade brooch depicting birds etc with Diamond set ends, mounted in white metal, believed to be Platinum £800-1000
- 259 A pair of large Pearl set earrings (Pearls measuring x 13.6mm) set with a small Diamond on top, mounted in 18ct White Gold £800-1000
- 260 An Emerald and Diamond set five stone ring, square cut Emeralds and Diamonds set inbetween, engraving to inside shank, size P £1200-1500
- 261 An impressive square cut Aquamarine set ring with large border scroll and pierced shoulders encrusted with Diamonds, ring stamped 750, size N £800-1000

- 262 A continental Gold Ruby and Diamond set ring, central Ruby approx 1ct with Diamond set border, approx 0.9ct. ring size Q £3000-3500
- 263 A large square step cut set Emerald ring, Emerald approx 12.6cts set with baguette cut Diamond shoulders mounted in Platinum, with copy of Gemology Certificate, size P £10000-12000



- 264 An 18ct Gold solitaire Diamond ring, approx 0.55ct, with a copy of Diamond report, size L £600-800
- 265 A selection of military buttons with an assortment of jewellery including crosses (one 9ct Gold) and locket, one heart shaped stone set £30-50
- 266 Seven Silver and metal pocket watches £40-60
- 267 Various watches, Tissot, Seiko etc £20-40
- 268 A Silver rim cut glass decanter, Birmingham 1924 £40-60
- 269 An 19th Century Worcester floral cup and saucer (rim chips) and a Spode floral slop bowl, Patt No. 2508 £40-60
- 270 A Moorcroft Hibiscus pattern ginger jar on green ground with stickers and marks to base (inside lid rim chip) £30-50
- 271 A Moorcroft Anemone pattern pin dish on blue ground with marks to base £30-50
- 272 A Clarice Cliff Harvest Barbola sugar bowl and metal lid £20-40
- 273 A 19th Century Staffordshire girl on goat, sheep, cottage and figure of Wesley £40-60
- 274 A Dresden pin tray, jug and cabinet cup and saucer (non matching) £50-70
- 275 A Flight Worcester tea bowl, Bat print jug and other 19th Century china £40-60
- 276 A Dresden bird and floral vase plus a sugar caster £40-60
- 277 A Royal Worcester vase, two jugs plus other small items £30-50
- 278 Various continental porcelain figurines £40-60
- 279 Various continental porcelain figurines £40-60
- 280 A 19th Century Derby figurine (restored hand) plus three continental figurines £40-60

- 281 A Meissen figurine of a child skater and a Sitzendorf cherub £50-70
- 282 A Chinese blue and white crackleware landscape mug £40-60
- 283 A Beswick Palomino horse in standing form £20-40
- 284 A Royal Doulton figurine The Paisley Shawl HN 1460 (head repair) £40-60
- 285 A small Bronze bust of a woman £50-70
- 286 A cash tin containing vintage Ivory, Amethyst etc £30-50
- 287 A Japanese Ivory two piece erotic netsuke £20-40
- 288 A gilt metal hand mirror with horse and figure electrotype decoration £30-50
- 289 Various mainly GB coinage (some Silver) £30-50
- 290 A Victorian papier mache snuff box painted with a boating scene £30-50
- 291 Five carved hardwood animals £20-40
- 292 A 19th Century portrait miniature of head and shoulders of a lady in an oval gilt frame £80-120
- 293 A 19th Century miniature of head and shoulders of a lady in a Maple frame £50-70
- 294 A miniature painting on porcelain of a girl and two Baxter needle prints £40-60
- 295 A 19th Century Rosewood needlework item, a carved wooden watch case and other items £30-50
- 296 A Chinese Brass Koro with dragon decoration and mark to base £50-70
- 297 A pair of Royal Doulton Slaters pattern vases, height 8" £30-40
- 298 A Moorcroft Anna Lily vase, circa 1998, with marks to base, height 7 3/4" £100-150



- 299 A German pewter dish iridescent enamel plaque to bottom, a pair of Silver shipping cufflinks, Silver and Amethyst earrings, a 9ct Gold clasp etc £30-50
- 299AA Sapphire cluster ring stamped 14K £60-80
- 299BA chain stamped 585 £60-80
- 300 A Brass milkmaid and a dagger with decorative grip £20-40

- 300A Various Georgian and other Silver cutlery
£320-360
- 300BA Silver locket, opera glasses and other
items £30-50
- 300CA horn beaker with Silver rim £30-50
- 300DA Brass carriage clock, marked E.Dent,
Paris £70-100
- 300EA Samson two figure group plus two
continental figurines £20-40
- 300F Three boxed gents wristwatches £20-40
- 300GA Victorian circular Copper jelly mould of
turret form, the tops linked with a chain,
by Benham & Froud, stamped 443,
5 1/4" dia £120-160
- 300HA circular Silver mirror with shell crest,
Birmingham 1911 £50-80
- 301 A Bronze of Icarus and lady, height 11"
£80-120
- 301AA pair of unusual 14ct White Gold
earrings set with Rubies £60-80
- 302 A modern Brass compass and a gilt
travelling inkwell £20-40
- 303 A Chinese carved Ivory rickshaw, two
buffalos and a camel £40-60
- 304 A cased Dunhill gilt and black enamel
lighter in original box £40-60
- 305 A Japanese Meiji period Ivory group of a
mother and child £40-60
- 306 A metal owl pepper with glass eyes
£20-40
- 307 A pair of decorated Chinese horn bowls
£30-50
- 308 A 19th Century Copper travelling candle
case £60-80
- 309 Two pairs of Japanese Bronze and gilt
metal plaques plus one smaller £120-150
- 310 A Chinese glass interior painted flask and
various stone carvings etc £70-90
- 311 A 19th Century pewter inkwell £45-55
- 312 A 19th Century patent black Bakelite
photo frame with angel and cherub
decoration £30-50
- 313 Three Mother of Pearl card cases £60-80
- 314 A 19th Century miniature half length
portrait of a lady in a tortoiseshell frame
£60-80



- 315 A Tibetan metal travelling shrine £20-40

- 316 A French Bronze match striker in the
form of a bill poster and dog, 11" x 6"
£380-450
- 317 A Silver photo frame, marked 925
Sheffield £35-55
- 318 A gilt metal figure of an unclad lady and
dolphin, height 14" £200-250
- 319 A cased Silver dressing table set,
Birmingham 1950/51 £190-220
- 320 A cased Silver dressing table set
(as found), Birmingham 1923 £55-75
- 321 Two cased sets of six Silver teaspoons,
one gilded, Birmingham 1933 and
Birmingham 1930 £40-60
- 322 A cased set of six Georgian Silver
teaspoons and tongs £20-40
- 323 A cased set of six Silver Apostle spoons
and tongs, London 1882 £30-40
- 324 Two cased sets of six Silver coffee
spoons, Birmingham 1924 and
Birmingham 1956 £30-40
- 325 Four Silver vestas and five thimbles
£40-60
- 326 Various Silver serviette rings and salts
£50-70
- 327 Seven various Silver cigarette cases
(most as found) £180-220
- 328 A continental Silver caddy sifter spoon
and a Dutch Silver plated candlestick etc
£20-30
- 329 A Silver cream jug, Birmingham 1906, a
cigar cutter plus other items £30-40
- 330 A Silver back brush and mirror, a
cigarette box plus other Silver items
£40-60
- 331 A Georg Jensen Silver bowl (numbered
575C on bottom) together with a Georg
Jensen Silver spoon with stylised handle
(numbered 21) £600-700



- 332 Various small items including snuff boxes
and penknives etc £40-60
- 333 Three Silver chick pin cushions £50-70
- 333A 9ct White Gold Diamond set drop
earrings £40-60
- 334 A pierced Silver four handled basket,
Sheffield 1910 £140-160
- 335 Four Silver wine labels plus a miniature
cricket bat £30-50
- 336 Two Silver photo frames £40-60

- 337 A Silver clad religious book with embossed leaf decoration, London 1900 plus a white metal owl bookmark £40-60
- 338 An Art Nouveau Silver photo frame with embossed bird and floral decoration, Birmingham 1911 £80-100
- 339 A Georgian Silver snuff box £50-70
- 340 Various Silver and white metal items £110-130
- 341 A Silver teapot and cream jug, Birmingham 1924 £220-260
- 342 A Silver top glass perfume bottle, Birmingham 1909 £20-30
- 343 A Silver handled snuffer plus a tortoiseshell and Silver paperknife with magnifying glass £40-60
- 344 A pair of Silver candlesticks, Birmingham £30-50
- 345 A pink guilloche enamel Silver candlestick and other Silver plus white metal items £50-70
- 346 Two pairs of Georgian Silver tongs, a fruit knife plus an Aspreys propelling pencil holder £40-60
- 347 A Silver mesh purse marked 925 and a Silver sifter spoon £50-60
- 348 Various items of English and continental Silver cutlery £80-100
- 349 A spoon with large white metal bowl and a carved wooden handle, marked 55 £30-50
- 350 A pair of Swiss Silver candlesticks with spiral column on wide shaped bases, height 8 1/2", late 19th/early 20th Century £180-220



- 351 A Silver sauce boat, Birmingham 1946 and a sugar caster, London £60-80
- 352 Three Silver spoons, one Silver plated £30-50
- 353 Various Silver and other cutlery £40-60
- 354 A Silver photo frame, Sheffield 1997 £30-50
- 355 Rectangular and circular Silver photo frames, Birmingham 1910 and Birmingham 1916 £40-60
- 356 A pair of figure embossed Silver photo frames £70-100
- 357 A Silver topped leather circular box with Millais cherub decoration, London 1990 £50-70

- 358 Two Silver boxes, a toast rack plus other items £80-120
- 359 Various Georgian and other Silver cutlery £120-140
- 360 Various Georgian and other Silver cutlery £130-150
- 361 Various Silver dressing table items £40-60
- 362 A pair of wavy rim Silver sauce boats, Chester 1901 (some dents to both) £100-150
- 363 A Silver three piece half fluted tea set, Sheffield 1910 £300-400



- 364 A Silver teapot with wavy edge on four feet with inscription, slight rub marks, Chester (damage to top) £200-300
- 365 A large Silver salver with pie crust edge on four feet, by Garrads, London 1961 £450-550
- 366 A Chopard 18ct White Gold 'happy Diamonds' pendant in the form of a circle within a circle with three floating Diamonds inbetween, hung on an 18ct White Gold double strand Chopard chain £850-950



- 367 A Silver fronted calendar, Birmingham 1937 £40-60
- 368 An 18ct White Gold three Diamond ring, size J £150-200
- 369 A large collection of costume jewellery including bracelets, necklaces and earrings etc £40-60
- 370 A Platinum Diamond and Emerald set ring, size I £1000-1500



- 371 A Ruby and Diamond Art Deco style ring, central Ruby with Diamond border in square shape with Diamond set shoulders, believed to be Platinum, size K £1000-1500



- 372 A Sapphire and Diamond three stone ring in 18ct Gold, size K £250-350
- 372A A pair of 9ct Gold Mystic Quartz and Diamond set half hoop earrings £40-60
- 373 An unmarked Gold bar brooch (as found) set with a large central Diamond £200-300
- 374 An unmarked Gold shield shaped pendant with blue enamel decoration depicting a cherub with a basket of flowers set with Seed Pearls (enamel as found) £70-90
- 375 A small unmarked Gold and white metal brooch depicting a basket of flowers set with Diamonds £80-120



- 376 A Gold Blister Pearl and Amethyst set bracelet (some damage) £100-150
- 377 An unmarked Gold and Amethyst set brooch £50-70
- 378 An unmarked Gold heart shaped brooch set with Pearls and Rubies £40-60
- 379 A 9ct Gold cased lady's wristwatch on 9ct Gold strap £150-200
- 380 A yellow metal double photo locket on chain £300-400
- 381 A Gold marked cameo brooch £40-60
- 382 A 9ct Gold necklace set with Pearls with a 9ct Gold back and front locket and a yellow metal necklace £100-150
- 383 A small quantity of Gold jewellery including a pair of 18ct Gold studs and a pair of 9ct Gold studs etc £70-90
- 384 A quantity of Silver and white metal jewellery £40-60
- 385 A selection of Silver jewellery including necklaces, brooches and a watch etc £50-70

- 386 A selection of costume jewellery including an Amber brooch, Coral necklace and Tortoiseshell etc £30-50
- 387 A pair of Silver purple stone and Amethyst set earrings with similar pendant £20-30
- 388 A 9ct Gold Sapphire and Diamond set circular pendant on a 9ct Gold chain £40-60
- 389 A Diamond & Co watch, Mother of Pearl face on leather strap £50-70
- 390 A Gold white stone set bracelet £80-120
- 391 An oval shaped large Blue Topaz pendant mounted in 9ct Gold with small Diamonds £50-70
- 392 An oval shaped Opal pendant mounted in 9ct White Gold set with Diamonds £50-70
- 393 A 9ct Gold Citrine and Garnet set pendant with matching earrings £60-80
- 394 A 9ct Gold bar pendant set with rows of orange stone on a 9ct Gold chain £50-70
- 394A A pair of 9ct Gold Ruby and Diamond hoop earrings £40-60
- 395 A pair of 9ct Gold hexagonal Diamond cluster earrings £40-60
- 396 Two pairs of earrings both flower form, one set with Opals and Rubies the other with Rubies and central Pearl £40-60
- 397 A carved Jade pendant in the form of a leaf mounted in 9ct Gold with a row of Peridots to centre, hung from a 9ct Gold chain £60-80
- 398 A 9ct White Gold Opal and Sapphire pendant on a 9ct White Gold rope necklace £50-70
- 399 A pair of 9ct Gold two toned Diamond earrings £30-50
- 400 A pair of 9ct White Gold Pearl and Diamond set drop earrings £60-80
- 401 An Onyx and Silver mounted photo frame £100-150



- 402 A Mappin & Webb Silver plated epergne with three cut glass trumpets £60-80
- 403 A 19th Century French Onyx and metal eagle on column plus five small clocks £30-50
- 404 An oval monochrome enamel plaque of a continental church £20-40

- 405 A Chinese cased clarinet £30-40
- 406 A metal clock case with Roman archer mount £60-80
- 407 A telescope by B.Solomons, London £35-45
- 408 An Edwardian inlaid Mahogany mantel clock £20-30
- 409 Three boxes of various pens £30-40
- 410 A boxed pair of Korean antique style earrings £25-35
- 411 No Lot
- 412 A Japanese Brass vase with bird and deer inlays plus one other with relief tiger decoration £40-60
- 413 Two 18th Century Brass mortars and pestles £40-60
- 414 Three West African tribal carvings including a drum beater £40-60
- 415 A pair of Native American miniature totem poles and a small mask £20-40
- 416 A marble Obelisk and a Greek pottery jug £30-50
- 417 An Indian black marble plaque with Mother of Pearl Taj Mahal inlays £30-50
- 418 A pair of 19th Century Silver plated coasters plus one other £40-60
- 419 Six enamel Royal commemorative beakers, Victoria to Geo V £20-40
- 420 A Balkan Sobranie pottery cigarette box £20-40
- 421 Various cigarette cards in sleeves £20-40
- 422 A pair of Dresden floral cylindrical vases, height 8" £30-50
- 423 A Japanese vase and a figural teapot £30-40
- 424 A Silver handled carving set, opera glasses and lighters etc £40-60
- 425 A Tortoiseshell box, a Brass inkstand and a treen watch stand etc £40-60
- 426 Davenport, Copeland Garrett plus one other 19th Century plate £30-40
- 427 A pair of Victorian papier mache floral painted hand screens £40-60
- 428 A gilt metal hand mirror containing a miniature of head and shoulders of a Victorian lady £40-60
- 429 Four Victorian silhouette pictures, three ladies and one gent (one titled Mrs Maitland) £50-70
- 430 A cameo on a Mother of Pearl plaque and three 19th Century miniature prints £30-50
- 431 Three 19th Century miniatures, two ladies and a child £40-60

- 432 A Georgian miniature of head and shoulders of a gentleman £50-80
- 433 A Victorian miniature of a lady with attendants £50-80
- 434 A Georgian miniature of head and shoulders of a gentleman £40-60
- 435 A Georgian miniature of head and shoulders of a gentleman in gilt framed hair backed brooch £80-120



Lots 434 and 435

- 436 An Art Nouveau three division embossed Copper bound rectangular playing card box, 10 1/4" wide £60-80
- 437 Two 19th Century Parian busts, Ruskin and Beethoven £30-40
- 438 A Copeland Parian ware bust, Hop Queen by J.Durham, 1872 £150-200
- 439 Various Booths, Wedgwood and other china and glass plus Silver plate etc (two boxes) £20-40
- 440 An 18th Century Worcester fluted cup and a small Silver bowl £20-40
- 441 A Victorian circular Copper jelly mould of castle shape, 5 1/4" dia £70-100
- 442 An 18th Century Brass pepper with circles of moulded decoration and circular base, 5 3/4" high £40-60
- 443 An antique Brass snuff box the hinged lid engraved 'Henry Betterage Kingsdown from H.Tiley 1700' and the underbase with a hand shake, 2 3/4" wide £50-80
- 444 Various china figurines and ornaments £20-30
- 445 A metal Stephenson's rocket and other items £20-30
- 446 Various Mahogany wall brackets and a Brass horse head walking stick £30-50
- 447 A pair of Japanese pictures of silk plus various others £20-30
- 448 No Lot
- 449 A Victorian Mahogany wall clock £20-40
- 450 A wall hanging barometer with a brush set £20-30
- 451 Tony Wood cat teapots plus other items £20-30
- 452 Two boxes of various china and glass £20-40

- | | | | | | |
|-----|--|----------|-----|--|---------|
| 453 | Various figurines and ornaments | £20-40 | 479 | Various items of Silver plate and cutlery | £40-60 |
| 454 | A floral jug and bowl set plus Victorian meat plates etc | £20-40 | 480 | A tin hat box containing a vintage wooden hat mould | £40-60 |
| 455 | Various items of Brass, Copper and Silver plate | £20-40 | 481 | A picnic basket, one other containing linen, lawn bowls and a table top display case | £20-30 |
| 456 | An Art Nouveau Copper and Brass firescreen with applied foliage and bird decoration | £30-50 | 482 | A 1950's plaster and glass fish bowl with two boys fishing | £30-50 |
| 457 | A large 19th Century Dutch Copper and Brass grape hod highly embossed with grape harvesting scene and rampant lion, etc 36" high | £200-250 | 483 | An Edwardian Mahogany rising top stationery cabinet | £30-40 |
| 458 | Rev.D.R.Cullen, Victorian Family Bible, Brass bound | £20-30 | 484 | A microscope, a treen wall pocket plus other items | £30-40 |
| 459 | A book of Victorian sepia photographs of old master paintings | £20-40 | 485 | A painted glass and white metal oil lamp plus various china and glass | £20-30 |
| 460 | A Belleek jug, Derby plate plus other 19th Century china | £20-40 | 486 | A Queen Anne Fair Lady tea set | £30-40 |
| 461 | A Victorian Walnut and Brass bound box plus other items | £40-60 | 487 | A Staffordshire Prince of Orange Rose decorated tea set etc | £20-30 |
| 462 | A Japanese blue and white bird decorated charger | £40-60 | 488 | A Royal Doulton figurine Ninette HN 2379, a salad bowl and servers plus other items | £20-40 |
| 463 | A Staffordshire style figure group | £20-30 | 489 | A modern A.M.S. Mahogany wall clock | £60-80 |
| 464 | Various 19th Century teawares (two trays) | £60-80 | 490 | A ships clock and bell plus a reproduction Caffreys wall mirror | £20-40 |
| 465 | One hundred picture portfolio | £20-30 | 491 | Various Brass, Copper and other metalware etc plus various Laurel and Hardy figures | £30-40 |
| 466 | Two French glass ceiling light bowls | £20-30 | 492 | A Bishop & Stonier blue and white dinner set plus various vegetable decorated china | £20-30 |
| 467 | A pair of red flashed decanters plus other glassware | £30-50 | 493 | A Royal Doulton Sonnet tea and coffee set | £20-30 |
| 468 | Royal commemorative and other china | £30-40 | 494 | A large quantity of Wedgwood Wild Strawberry pattern dinner and tea service, one hundred and twelve pieces | £75-100 |
| 469 | Four Javanese stick puppets | £20-40 | 495 | Two framed Ogilvies road maps, Exeter to Barnstable and Dartmouth to Minehead, 13" x 17" | £70-100 |
| 470 | Various Copeland Garrett china including plates, slop bowl, pen tray and vases | £50-70 | 496 | A Victorian beadwork shaped stand, length 23" | £30-50 |
| 471 | Various china including Holmfirth Wesleyan church beaker, Royal Doulton teapot etc | £20-40 | 497 | A 19th Century Chas Hunt coloured print of Northampton Grand National Steeplechase, 1840, 20" x 27" | £40-60 |
| 472 | A Wedgwood terracotta plate painted with a kingfisher and a Poole floral plate | £30-50 | 498 | J.Zakesi, Italian print of a Florence river scene with fishermen, 1926 | £30-50 |
| 473 | Victorian Brass candlesticks, binoculars and other items | £20-40 | 499 | A Venetian scene watercolour plus other pictures | £20-40 |
| 474 | Various Copeland Garrett cups and saucers (two trays) | £40-60 | 500 | Various cameras and accessories | £20-30 |
| 475 | An Aynsley floral tea set and Wedgwood, Royal Worcester and Susie Cooper coffee sets | £50-70 | 501 | Two beadwork floral pictures, two other pictures plus a sampler | £20-40 |
| 476 | Various coloured glass including a blue overlaid bottle and paperweights | £30-50 | 502 | A watercolour of a Victorian lady, 8" x 6" | £30-50 |
| 477 | Five cut glass decanters and various bowls | £30-50 | | | |
| 478 | Various items of cut glass and china | £20-40 | | | |

503	A pair of silk and gold thread floral pictures, 11" x 36"	£40-60	528	Four blue and white meat plates and a Royal Doulton Norfolk teapot (no lid) etc	£20-30
504	A Japanese floral watercolour plus other pictures	£20-40	529	A wood engraving starter kit with engraving sand bag, inking slab plus two wooden small boxes	£30-40
505	An 1822 Daniel coloured print of Southwold, 9" x 11"	£20-40	530	A Persian geometric rug, 77" x 52"	£50-70
506	A framed three dimensional display of two Victorian ladies in silk and lace dresses, 10" x 9"	£50-80	531	An Afghan rug with five central medallions, 79" x 40"	£40-60
507	Five various gilt framed mirrors	£20-40	532	A pair of Edwardian open barley twist Brass candlesticks on petal shaped bases, 11" high	£30-50
508	Various cut and coloured glass (two trays)	£20-40	533	Two 19th Century pierced Brass iron stands and a pair of Oak barley twist candlesticks with Brass sconces	£20-40
509	Various cut glass droplet light fittings	£30-50	534	Three Brass pigs in graduating form (two money boxes)	£25-35
510	Wedgwood and other china including Susie Cooper	£20-40	535	Various volumes on history	£20-30
511	Various Royal Worcester Evesham china (two boxes)	£40-60	536	Various volumes on East Anglian topography	£30-40
512	A Spode Fleurs De Lys gold tea set	£20-30	537	Various volumes on GB topography	£30-40
513	A Roberts radio and other items	£20-30	538	Various volumes on Britain in pictures and world travel etc	£20-40
514	A Kerr & Binns Worcester Pear painted plate plus other 19th Century china	£30-50	539	Various volumes on porcelain etc	£20-40
515	A Dresden floral two handled bowl plus other mainly 19th Century china	£30-50	540	Daphne Foskett, Miniatures Dictionary and Guide plus other volumes on porcelain	£30-40
516	Three various fur stoles	£20-30	541	Various volumes on art and antiques	£20-30
517	Two Silver plated trays, cutlery and Silver plate	£40-60	542	Various volumes on seafaring, natural history etc (two boxes)	£20-40
518	A Morland print, The Idle Laundress, a framed lace collar plus other pictures	£20-40	543	A case containing 19th Century vellum deeds and various old photos	£30-50
519	An 18th Century coloured print, View of Putney and Fulham and an 1851 Shepherd print View from Richmond Hill	£20-40	544	Various Kaiser white porcelain vases, a china clock plus other china (two boxes)	£20-40
520	A Chinese silk floral picture and a 19th Century English village scene on silk in Maple frame	£30-50	545	A heavy cut glass basket plus four others and other cut glass (two trays)	£30-50
521	Two Victorian monochrome pictures, Standing Girl and Bust of a Lady	£40-60	546	Six Gt Yarmouth pottery tankards	£30-40
522	A Georgian oval silkwork picture, Woman and Child, 8" x 6"	£70-100	547	A large Murano glass clown plus one other and two Edwardian floral vases	£20-40
523	A pair of Georgian oval silkwork pictures, Seated Girl and Boy, 5" x 4"	£70-100	548	German porcelain dancing ladies plus other china	£20-40
524	A pencil drawing of various sailboats, inscription verso, Edward William Cooke R.A. (from a sketch book), 5" x 4 1/4"	£20-40	549	Two gilt framed landscape oils on canvas, still life oils plus one other picture	£30-50
525	Various watch boxes (two boxes)	£20-40	550	Four decorative oils on board of seascapes with ships	£40-60
526	A reproduction wall clock with Brass fittings	£30-40	550A	Black and grey telephones, an industrial thermometer and pressure gauges	£20-30
527	Two canteens of Italian Silver plated cutlery	£30-50			

FURNITURE AND COURTYARD

Lots 1001 – 1192

ALL MEASUREMENTS ARE APPROXIMATE

- 1001 An Oak glazed cupboard bookcase £30-50
- 1002 A reproduction Mahogany revolving two tier bookcase £50-80
- 1003 A Victorian Mahogany fitted wardrobe with four drawers below £100-150
- 1004 A rectangular Oak occasional table £20-30
- 1005 A Victorian Satinwood chest of two short and two long drawers £40-60
- 1006 A Victorian metal bound dome top trunk £20-40
- 1007 A large Victorian Mahogany four drawer chest on bun feet £70-100
- 1008 A Victorian inlaid Mahogany single door pier cabinet decorated with Brass furniture £80-120
- 1009 A Victorian Mahogany single door wardrobe £50-80
- 1010 A 19th Century inlaid Mahogany and cross banded three door chest on bracket feet £100-150
- 1011 A Victorian Mahogany two door mirror wardrobe £30-50
- 1012 An Edwardian Satinwood dressing chest £20-40
- 1013 A reproduction Walnut and Mahogany corner cabinet £30-50
- 1014 Three Oak dining chairs, an Oak magazine rack/side table and an Oak plate rack £20-40
- 1015 A Georgian Mahogany chest on chest of two short over three long drawers on a base of three long drawers £300-400
- 1016 A Victorian inlaid rosewood envelope card table with single drawer £120-180
- 1017 A French Kingwood and Brass mounted lady's escritoire with metal gallery and Vernis Martin painted flap, depicting a courting couple, on cabriole legs £100-150
- 1018 A modern Pine narrow chest of six drawers £30-50
- 1019 A Georgian Mahogany chest on chest of two short and three long drawers on a base of three drawers with blind fret carving £150-200
- 1020 An Oak three shelf open bookshelf £20-40
- 1021 A reproduction Mahogany Davenport with eight drawers £60-100
- 1022 A Victorian Mahogany two door fitted wardrobe £100-150
- 1023 A Mahogany single door glazed cabinet £20-40
- 1024 An Edwardian Mahogany single door china cabinet with painted inlays £40-60
- 1025 A Victorian Mahogany two door fitted wardrobe £150-250
- 1026 A 19th Century Mahogany three drawer chest on bracket feet £50-70
- 1027 A 1950's kitchen cabinet with enamel top and glazed interior with labels for "Bread", "Milk", "Eggs", "Fats and Butter" and "Meat" £60-80
- 1028 A reproduction Mahogany TV stand and corner cupboard £30-40
- 1029 A reproduction Mahogany corner cabinet and low cupboard chest £20-40
- 1030 Five easels, a box stool and one other £30-50
- 1031 A Mahogany cased 78 player by Barnes of London with Chinoiserie decoration £50-80
- 1032 A reproduction Yew sideboard £30-50
- 1033 A Brass and Onyx standard lamp and two other lamps £30-50
- 1034 A reproduction Mahogany glazed two door china display cabinet £20-30
- 1035 A button back wing armchair and a tub shaped armchair £40-60
- 1036 Two foot stools, a magazine rack and a card table £20-40
- 1037 A cross banded Mahogany two drawer sofa table £40-60
- 1038 A Pine wine cabinet/rack £30-50
- 1039 A Mahogany torchere and towel rail £20-40
- 1040 A Victorian Mahogany single drawer work table on carved column and tripod support £50-80
- 1041 A Victorian Mahogany chest with brushing slide over four graduated drawers £80-120
- 1042 A tin travelling trunk £20-30
- 1043 A Pine TV cabinet and a modern wave mirror £20-30



- 1044 A brown leather three piece suite and matching foot stool £50-70
- 1045 A reproduction Walnut and Mahogany bow fronted chest with brushing slide over four drawers on bracket feet £40-60
- 1046 A Victorian Mahogany three drawer chest £100-150
- 1047 A Victorian carved Oak hall table with singled drawer on bobbin turned supports £40-60
- 1048 A modern bureau and chest of three drawers £20-40
- 1049 A modern paisley print upholstered armchair £20-40
- 1050 A modern chest cupboard, bedside chest and small open bookcase £20-30
- 1051 A pair of modern open three shelf bookcases £20-30
- 1052 A magazine rack, tea trolley, occasional table and small armchair £20-30
- 1053 A three fold cream and red fabric screen £20-30
- 1054 A Beech kitchen trolley £20-30
- 1055 A Mahogany fall front work table and 19th Century inlaid Mahogany pot cupboard £40-60
- 1056 An Edwardian Oak dressing table £30-50
- 1057 A reproduction Mahogany Gladstone type window seat £40-60
- 1058 A Victorian two seat Chesterfield £30-50
- 1059 A MultiYork mustard and terracotta two seater sofa £50-70
- 1060 A nearly new modern cream upholstered two seater sofa £50-70
- 1061 A Victorian upholstered three seater Chesterfield £30-50
- 1062 Three cane seat chairs and two others £20-30
- 1063 A Lebus wardrobe and a fabric covered portable wardrobe £20-40
- 1064 A Mahogany folding top card table in Chippendale style £50-70
- 1065 A modern oval two flap dining table and a pair of painted dining chairs £20-40
- 1066 A Victorian Mahogany red leatherette upholstered armchair £20-40
- 1067 A modern two door wardrobe and modern chest £20-40
- 1068 An Art Nouveau style iron fire surround with floral tiles and brass fire front £50-70
- 1069 A 19th Century Oak eight day long case close with deer painted arched dial marked Thomas Gibson, Berwick £120-180
- 1070 An Oak work box with blue fabric interior £20-30
- 1071 A Mahogany Simpoles Chapter three sectional bookcase (no glass) £30-50
- 1072 A red velvet upholstered steamer chair £30-50
- 1073 A 19th Century Mahogany eight day long case clock with arched dial, date and second dials £200-300



- 1074 A substantial Pine double bed frame £20-40
- 1075 A wrought iron and Brass bowl standard oil lamp and a Victorian Mahogany curtain pole with rings £50-70
- 1076 An open six shelf bookcase marked "Danish, Steens" £20-30
- 1077 A modern folding card table £20-40
- 1078 Four Chinese hardwood jardiniere stands £50-70
- 1079 A Mahogany wall mirror with central cornice £20-40
- 1080 A Victorian Mahogany Sutherland table £30-50
- 1081 A 19th Century circular Mahogany occasional table on single column and platform base £20-40
- 1082 A Victorian Mahogany chest of two short and three long drawers £70-100
- 1083 A Mahogany spinning wheel £20-40
- 1084 A Victorian Pine blanket chest £40-60
- 1085 A Walnut two door cabinet with three drawers £40-60
- 1086 A Victorian Mahogany white marble top washstand £40-60
- 1087 A Mahogany and ebonised six tier whatnot £40-60
- 1088 A 19th Century Mahogany corner washstand £30-50
- 1089 A Mahogany astral glazed hanging corner cabinet £30-50
- 1090 A Victorian Mahogany shaped top snap top table on turned column and tripod support £40-60
- 1091 An Oak two door wall cabinet with leaf carved doors £40-60
- 1092 An Oak sideboard on barley twist supports £30-50
- 1093 A Victorian Mahogany desk with four drawer superstructure over nine drawers £100-150

1094	A pair of Brass fire dogs	£40-60	1119	A Mahogany Georgian style parcel gilt wall mirror with HoHo bird decorated gilt crest	£50-70
1095	A Brass log bin	£20-40	1120	An Oak glazed astral corner cabinet	£20-40
1096	A modern Pine kneehole desk with four drawers	£30-50	1121	A modern light Oak shelf backed dresser	£40-60
1097	A Colin 'Beaverman' Almack, Oak book rack	£40-60	1122	A Dimplex electric fire and moulded plaster and marble effect fire surround	£30-50
1098	A reproduction Mahogany bow fronted four drawer chest and a TV cabinet	£40-60	1123	An Edwardian Mahogany corner mirror door wardrobe	£70-100
1099	An usual adjustable Oak pendant hanging ceiling light	£20-40	1124	A Victorian Mahogany chest of two short and three long drawers	£40-60
1100	A Mahogany chest of two short and three long drawers	£40-60	1125	Two 19th Century Mahogany country dining chairs and a pair of Oak brush seat chairs	£30-50
1101	A metal cabin trunk and one other	£20-40	1126	A white painted overmantel mirror	£20-40
1102	A large carved Oak rectangular wall mirror	£30-50	1127	A modern lead glazed two door cabinet	£30-40
1103	A blue Revo mobility scooter with charge pack, cover, owner's manual and two keys	£150-250	1128	An Edwardian inlaid Mahogany lead glazed bow front china display cabinet	£80-120
1104	An Oak two piece conservatory suite	£20-40	1129	A reproduction four drawer chest plus a CD cabinet	£20-40
1105	A reproduction Mahogany two door china display cabinet	£20-40	1130	A reproduction inlaid Mahogany sideboard	£30-50
1106	A 1920's Oak sideboard on barley twist supports	£20-40	1131	Two single bed frames	£20-30
1107	An Edwardian circular Mahogany pot cupboard with Brass Gallery	£30-50	1132	A Teak garden table and six chairs	£30-40
1108	A rectangular beval edge silver gilt wall mirror	£20-40	1133	A circular metal garden table	£30-40
1109	A Colin 'Beaverman' Almack carved Oak chair	£80-120	1134	An inflatable dinghy with oars and a foot pump	£30-50
			1135	Two white plastic garden chairs and tables	£20-30
1110	An Oak cupboard bookcase with single central drawer over two lead glazed doors flanked by open shelves	£50-70	1136	A red and white painted concrete wishing well	£20-40
1111	A Victorian Mahogany bidet, and Indian carved octagonal table	£30-50	1137	A concrete bird bath decorated with foliage and rabbits	£20-40
1112	A rectangular beval edge wall mirror	£20-40	1138	Three painted concrete statues, one of a witch and two Oriental figures	£20-40
1113	An Oak single drawer cutlery table on bobbin turned supports	£20-40	1139	A painted concrete statue of a dog with a collar	£20-30
1114	A carved Koran stand and decorated book stand	£20-30	1140	A selection of painted concrete statues, three dogs, a pair of hedgehogs on a sofa and an Owl with chicks	£20-40
1115	A work bench with a vice	£20-40	1141	Five painted concrete dog statues	£20-40
1116	A Pine TV stand and Brass curb	£20-40	1142	Four painted concrete statues of gnomes, pixies and a man walking a dog	£20-40
1117	A Pine corner TV cabinet with glazed doors	£20-30	1143	An electric mobility scooter (no key)	£30-40
1118	A Mahogany oval inlaid occasional table	£30-50	1144	Forty nine salt glazed barley twist lawn edging tiles	£40-60

1145	A modern Pine glazed corner unit £30-50	1168	An Indian circular Brass top folding table and shaped top Brass tray £20-40
1146	A reproduction Mahogany 'D' end dining table and six chairs with green hide button upholstered seats £50-80	1169	A good quality contemporary circular glass top dining table on spiral stepped green glass column £80-120
1147	A Mahogany glazed two door cabinet flanked with open shelves £40-60	1170	Three Victorian Mahogany carved back dining chairs and a pair of Victorian Mahogany carved back dining chairs £40-60
1148	A 1930's Walnut figure decorated two door wardrobe £40-60	1171	An Edwardian Mahogany glazed two door bookcase £40-60
1149	A four piece lined Oak 1930's bedroom suite comprising a double wardrobe, a double door cupboard with a mirror, a dressing table with a mirror and a stool, all with Bakelite handles £30-40	1172	A standard lamp, a tile top coffee table, one other table, a cupboard and a stool £20-40
1150	A pair of Pine three drawer bedside chests £20-40	1173	An Oak barley twist occasional table and a small wall shelf £20-40
1151	A reproduction Mahogany bedside cabinet and a reproduction Mahogany corner cabinet £20-40	1174	Two white painted chests of drawers £20-40
1152	A 1950's carved Oak sideboard with aluminium furniture £30-50	1175	An Oak lead glazed china display cabinet and a reproduction cabinet with sliding top and wine rack below £30-50
1153	A modern rectangular dining table with cantered corners and six Mahogany dining chairs £40-60	1176	A small Mahogany chest of three drawers and iron furniture £20-30
1154	Two dark wood shoe rack and small shoe shine stand £20-30	1177	A reproduction 'D' end dining table and additional leaf £20-40
1155	Two bedside pot cupboards, trolley and a table £20-30	1178	An ottoman with cream vinyl upholstery in the style of a chaise longue £20-40
1156	An Edwardian Mahogany tapestry upholstered duet stool and two small cabriole leg stools £30-50	1179	A Mahogany rocking chair £30-40
1157	An Edwardian Mahogany corner chair and a Victorian dining chair with Brass inlaid back £30-50	1180	A large Edwardian inlaid Mahogany cheval mirror £80-120
1158	A modern Oak oval drop leaf dining table and four Oak dining chairs £30-50	1181	A Walnut shaped top occasional table, a workbox and a nest of two tables £20-40
1159	A white kidney shaped dressing table £20-30	1182	An Oak draw leg table on barley twist supports and four dining chairs £70-100
1160	A Victorian Mahogany folding top card table £30-50	1183	A Victorian Rosewood combination work table incorporating a chess board and baize lined folding top £60-80
1161	A modern open bookcase £20-30	1184	A modern rectangular dining table and four chairs £30-50
1162	A 19th Century inlaid Mahogany and Rosewood dining table on carved column and platform base £70-100	1185	An Edwardian Mahogany shaped top occasional table £20-30
1163	Three pairs of Victorian dining chairs £60-80	1186	A Julian Bowen square occasional table £20-30
1164	A Victorian Mahogany partner's desk with two short drawers and cupboard £40-60	1187	A carved Oak Wainscot chair, 18th Century and later £40-60
1165	Four various chairs £20-30	1188	An Oak barley twist draw leg table and ten barley twist dining chairs £100-150
1166	A modern oval Mahogany extending dining table and upholstered chairs £30-50	1189	A Victorian Mahogany extending dining table with single leaf £100-150
1167	A 19th Century Windsor slat back armchair, Walnut elbow chair, a cane seat chair and a three piece Hercules fishing rod £40-60	1190	A 19th Century Oak hanging corner cabinet £40-60
		1191	A pair of Queen Anne style dining chairs and two cane seat chairs £20-40
		1192	A 19th Century rush seat elbow chair and a pair of matching single chairs £30-50

GENERAL CONDITIONS OF SALE

- 1 THE BUYER** - The highest bidder acknowledged as such by the auctioneer will be the buyer. If any dispute arises, the auctioneer shall have absolute discretion to settle the matter. The auctioneer shall rule the bidding and no bid shall be retracted. The auctioneer reserves the right to refuse any bid. The bidder in the room who is successful in purchasing any lot or lots is entirely responsible for paying for such lot or lots in accordance with our general conditions of sale. Purchases made on behalf of a third party are entirely the responsibility of the bidder in the room. The auctioneer reserves the right to bid on behalf of the vendors for any lot and to withdraw, consolidate or divide any lot or lots.
- 2 REGISTRATION** - To assist the progress of sale, all prospective buyers must register their name and address at reception and collect a bidding number before the sale commences. Should there be any doubts as to price or buyer, please draw the auctioneer's attention to it immediately.
- 3 BUYER'S PREMIUM** - A buyer's premium of 17% plus VAT at the standard rate of the hammer price is payable on each lot.
- 4 VENDOR'S COMMISSION** - Our standard Vendor's commission of 14% plus VAT will be charged up to £1000 - rate negotiable prior to sale. In addition, each lot will be subject to a lotting fee of £3 plus VAT.
- 5 PURCHASE VIA LIVE BIDDING** - Any lots purchased via the-saleroom.com live auction service will be subject to an additional 3% commission charge plus VAT at the current rate imposed on the hammer price. In completing the bidder registration on www.the-saleroom.com and providing your credit card details and unless alternative arrangements are made with Durrants you hereby agree to the following terms:
 - a) Durrants are authorised to charge the credit/debit card given in part or full payment including all fees for items successfully purchased in the auction via the sale-room.com, and
 - b) You are authorised to provide these credit/debit card details to Durrants through www.the-saleroom.com and agree that Durrants are entitled to ship the goods to the cardholder name and address provided in fulfilment of the sale.
- 6 VALUE ADDED TAX** - Lots on which Value Added Tax may be payable by the buyer on the "hammer price" are indicated in the catalogue by a symbol beside the lot number. The buyer shall pay any VAT which may be due on any amounts owed by the buyer under these conditions of sale at the rates prevailing on the day of the auction.
- 7 AUCTIONEERS MARGIN SCHEME** - The Auctioneers Margin Scheme allows auctioneers to sell items without VAT on the hammer price. Under the margin scheme an amount equivalent to VAT at the current rate is added to the buyer's premium. This amount cannot be refunded. The VAT element will not be shown separately on the buyer's invoice.
- 8 PAYMENT** - Our methods of payment are with bank transfer, cash, debit or credit card (in person only) or by cheque supported by a valid guarantee card or bankers reference. All purchases must be paid in full on the day of the sale before any lot is removed from the premises. No goods will be released to buyers unknown to the auctioneers without adequate reference or before their cheques have cleared. Anyone who, for whatever reason, is unable to pay for their goods on the day of the sale must inform the Saleroom Manager as to when payment will be made. There is a 2% surcharge on credit card payments.
- 9 ATTRIBUTION AND CONDITION OF LOTS** - Every effort is made to ensure the accuracy of any statement as to authorship, attribution, origin, date, age, provenance and condition of any lot whether or not such statement forms part of the description of any such lot. Whether any such statement is made orally or in the catalogue it is an expression of opinion. Each buyer by making a bid for a lot acknowledges that he has satisfied himself fully as to the attribution and condition of the lot. If any damage is done to any lot at the viewing or before, during or after the sale, such damage shall be made good by the person committing such damage, principals being responsible for the acts of their servants, such damage to be assessed by the auctioneers. Written condition reports are available for all Lots upon request. Buyers that do not request condition reports forfeit their right to a refund, except where we are in breach of Contract.

Verbal condition reports will not be given. The latest that a condition report will be e-mailed, posted or faxed is the day immediately before the sale.
- 10 ATTRIBUTION OF PICTURES** - (Condition 7 also refers).
 - (a) The forename(s) (or asterisks where not known) and surname of the artist indicates in our opinion a work by the artist
 - (b) The initials of the forename(s) and the surname of the artist indicates in our opinion a work of the period of the artist which may be wholly or in part his work.
 - (c) The surname of the artist indicates in our opinion a work of the school or by one of the followers of the artist or in his style and of uncertain date.
 - (d) Bears signature indicates in our opinion that this is not the signature of the artist.
 - (e) All other terms are self-explanatory.
- 11 OWNERSHIP OF PURCHASES** - The ownership of the lot(s) purchased will not pass to the buyer until the buyer has paid the auctioneers in full the total amount due and the auctioneers have applied such payment to the lot.
- 12 TRANSFER OF RISK** - Each lot shall be at the purchaser's sole risk from the fall of the hammer and shall be sold with all faults and imperfections. The purchaser is deemed to have inspected the lots and satisfied himself as to their condition. The liability to insure any purchased Lot shall pass from the auctioneer to the purchaser on the fall of the hammer.
- 13 COMMISSION BIDS** - If instructed, the auctioneers will execute bids and advise prospective purchasers. This service is free. Lots will always be purchased as cheaply as is allowed by such other bids and reserves as are on the auctioneer's books. In the event of identical bids, the earliest will take precedence. There must always be a maximum limit indicated, i.e. the amount to which you would bid if you were attending the auction yourself. "Buy" or unlimited bids will not be accepted. Commission bids placed by telephone are accepted at the client's risk. We do accept commission bids by facsimile. We urge our clients to place such commission bids within one hour of the close of the view day.
- 14 TELEPHONE BIDS** - Requests for telephone bidding must be registered with the Saleroom Manager within one hour of the close of the view day. It may not be possible to accept requests on sale days. Written confirmation of such bids from persons unknown to the auctioneers must be received before the commencement of the sale. Whilst every effort will be made to execute telephone bidding, the auctioneers cannot be held responsible for any default or neglect in connection with this service. All such arrangements therefore are made entirely at the prospective buyer's risk.
- 15 COLLECTION OF GOODS** - At the purchaser's sole cost and expense, the purchaser shall collect the lot(s) purchased not later than 12 mid-day after the day of the auction, not before payment to the auctioneers of the total amount due. After 5 working days, storage charges of £2 + VAT per day per lot will apply to any goods that have not been collected.
- 16 POSTAGE / SHIPPING** - Goods will not be released to couriers unless they are delivering to the address that the buyer has used for registration. Couriers are instructed not to take alternate delivery instructions once dispatched
- 17 COMPLIANCE** - Upon failure of any purchaser to comply with any of the above conditions any money deposited by the purchaser in part payments shall be forfeited to the owner of the lot, he paying there from, all just expenses. Any lot not paid for within 1 month of the purchase date shall be resold by public auction or private contract and the deficiency (if any) arising from such a resale together with all expenses attending the same shall be made good by the defaulter at this sale who shall have no claim to any surplus which may arise on a resale.
- 18 PRE SALE ESTIMATES** - Given by the auctioneers or a member of their staff are their opinion as to what they consider any particular lot is likely to realise. However any lot may sell at a figure less than the lower estimate and for more than the higher estimated figure. The auctioneers and their staff reserve the right to alter their pre-sale estimates, either upwards or downwards, on any lot at any time, up until such time as the lot is offered for sale.
- 19 RESERVES** - The auctioneers and vendors reserve the right: -
 - (a) To remove the reserve completely from a previously reserved lot at any time up until it is offered for sale.
 - (b) To place a reserve on a previously unreserved lot at any time up until it is offered for sale.
 - (c) To alter a reserve, either upwards or downwards, on any lot at any time up until it is offered for sale.
 - (d) Should any item fail to sell at the reserve price on the day of the Auction they will be subject to commission of 3% of the Reserve Price, subject to a minimum fee of £5 plus VAT.
- 20 THIRD PARTY LIABILITY** - Every person on the auctioneers' premises before, during or after a sale or at any other time, shall be deemed to be there at their own risk and shall have no claim against the auctioneer in respect of any injury they may sustain or any accident which may occur.
- 21 ANY NOTICES** - Any notices that may be displayed from time to time by the auctioneers in the sale ground or salerooms shall be deemed to form part of and be included within the general conditions of sale.
- 22 MONEY LAUNDERING REGULATIONS** - In order to comply with current anti-money laundering legislation we are unable to accept cash payments over £8,000. Any purchaser wishing to pay cash for any purchase over £1,000 may be asked for identification e.g. Passport or photo driving licence.
- 23 DROIT DE SUITE ROYALTY CHARGES** - in essence this charge will be made to the purchaser of any work of art that has been produced by a living artist or for a period of up to 70yrs after the artist's death, on lots with a hammer price more than the UK sterling equivalent of €1,000. Please refer to www.dacs.org.uk for further rules and current exchange rates. The royalty charge will be added to purchase invoices and must be paid before items can be cleared. All Royalty charges are paid to the Design and Artists Copyright Society (DACS) by the Auctioneers and no handling costs or additional fees with respect to these charges will be retained by the Auctioneer.
- 24 RICS REGULATION**
 - a) All Clients monies are paid into our Auction Clients Account with Barclays Bank PLC Norfolk Business and Agricultural Corporate Banking Centre, Norwich, Norfolk (any interest accrued monies held will be retained by Durrants)
 - b) Durrants operates an RICS approved complaints policy, details can be found on our website www.durrants.com
- 25 RESCISSION** - Notwithstanding any other terms of these Conditions, if within fourteen days of the date of sale Durrants receive from the buyer of any lot notice in writing that in his view the lot is a deliberate forgery and the lot is returned to them in this period in the same condition as at the time of sale and produces written evidence, the burden of proof to be upon the buyer, satisfies Durrants that considered in the light of the entry in the catalogue the lot is a deliberate forgery then the sale of the lot will be rescinded. The purchase price will be refunded once the sum has been returned to Durrants by the Seller.
- 26 REPRODUCTIONS** - Owing to the large number of Third Reich and other uniforms and accoutrements being used for films, television and plays, it becomes increasingly difficult to ascertain the authenticity of certain pieces. We catalogue all items as seen, and offer no guarantee as to their authenticity. The terms 'bronze', 'silver' and 'gold' refer to the grades in which medals, badges, etc., were awarded and not to their composition. Items described as (PATTERN) are an example of the described item with no guarantee of age or authenticity

BUYER REGISTRATION FORM

Please enter the information required below before taking it to a member of staff. Please ensure that you have a suitable form of identification to verify the information you are giving, e.g. driving licence, utility bill etc. Once you have done this you will be issued with a card and this will have your buyer's number on it

Mr / Mrs / Miss / Other:	_____	Initials:	_____	Surname:	_____
Company	_____				
Address	_____				

Tel:	_____				
Mobile:	_____				
E-mail:	_____				
Credit / Debit Card No:	_____				
Start Date:	_____	Expiry Date:	_____	Security Code:	_____

For Office Use Only
Buyers Registration Number: -

DURRANTS AUCTION ROOMS

The Old School House, Peddars Lane, Beccles, Suffolk, NR34 9UE

Tel: 01502 713490 Fax: 01502 711039

Email: auctionrooms@durrants.com

Web: www.durrants.com



DIRECTIONS

FROM A12/A145 (SOUTH)

On entering Beccles, at the first set of traffic lights turn right into Peddars Lane. The Auction Rooms are 200 metres along the road on your right.

FROM A143/A146 (BURY ST EDMUNDS & NORWICH)

Approaching Beccles, at the McDonald's roundabout, go straight over, then take the first right via Gillingham over the bridge into Beccles. Follow the road past the new Tesco, go straight at the first set of traffic lights, right at the second and the Auction Rooms are 100 metres on your left.

FROM A146 (LOWESTOFT)

At the Worlingham roundabout bear left through Worlingham. At the first set of lights go straight over, at the second turn left and the Auction Rooms are 100 metres on your left.

WWW.DURRANTS.COM

BECCLES
01502 712122
10 New Market
Beccles
Suffolk
NR34 9HA

DISS
01379 642233
Pump Hill House
2b Market Hill
Diss, Norfolk
IP22 4WH

HARLESTON
01379 852217
32-34 Thoroughfare
Harleston
Norfolk
IP20 9AU

SOUTHWOLD
01502 723292
98 High Street
Southwold
Suffolk
IP18 6DP

HALESWORTH
01986 872553
12 Thoroughfare
Halesworth
Suffolk
IP19 8AH

AUCTION ROOMS
01502 713490
The Old School House
Peddars Lane
Beccles, Suffolk
NR34 9UE

MAYFAIR
0870 112 7099
Cashel House
15 Thayer Street
London
W1U 3JT